

OTTAWA COUNTY ENGINEERS OFFICE

REFERENCE NO. 9-6-15-F
 EAST QUARTER POST SEC. 9
 SALEM TWP.
 SHEET 1 OF 1.

ROUTE: C-18 PORTAGE RIVER SOUTH RD.,
 @ T-221 BEBOW RD.

TOWNSHIP: SALEM

SECTION: 9

T 6 NR 15 E.

NORTHING:

EASTING:

DATUM:



PERSONNEL:

M. WITTMAN, P.S.
 B. JEFFRIES
 M. ULLRICH
 S. ULLRICH

DATE / WEATHER / TEMP:

JUNE 11, 2008
 SUNNY SW
 75° F

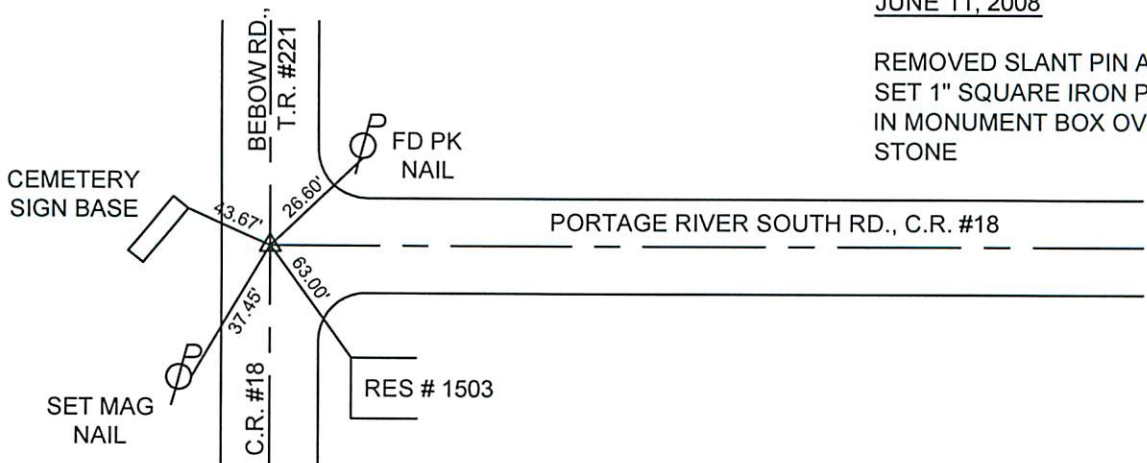
MONUMENT INFORMATION

MONUMENT TYPE: FD STONE W/ DRILL HOLE &
 "X" W/ 1" Ø SLANT PIN OVER STONE
 ON SURFACE - BELOW: 1.40'
 LEFT - CL PAV'T - RIGHT: 8.0'

 RECTANGULAR STONE: 7" x 5 1/2"



MISC. INFORMATION



JUNE 11, 2008

REMOVED SLANT PIN AND
 SET 1" SQUARE IRON PIN
 IN MONUMENT BOX OVER
 STONE