

OTTAWA COUNTY ENGINEERS OFFICE

REFERENCE NO. 9-6-15-A
 NW CORNER POST SECTION 9
 SALEM TWP.
SHEET 1 OF 1.

ROUTE: STATE ROUTE #19
 @ DR. TO CREDIT UNION

TOWNSHIP: SALEM

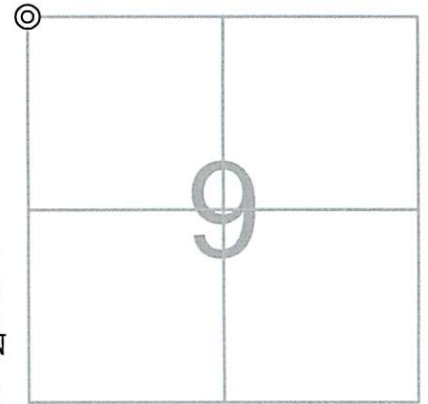
SECTION: 9

T 6 **NR** 15 **E.**

NORTHING:

EASTING:

DATUM:



PERSONNEL:

M. WITTMAN, P.S.
 J. ALLEN
 E. WESTFALL, P.S. - ODOT
 T. ROUSOS, J. RHODES - ODOT
 J. LEU - ODOT

DATE / WEATHER / TEMP:

OCTOBER 29, 2013
 SUNNY-NE
 52° F

MONUMENT INFORMATION

MONUMENT TYPE: FD. PK NAIL IN 1/2" Ø IRON PIPE
 ON SURFACE - BELOW: 0.98'
LEFT - CL PAV'T - RIGHT: 0.60'

IRON PIPE IN BRICK PAVEMENT PER COUNTY
 SURVEY RECORDS. THIS WAS ACCEPTED AS
 POINT.



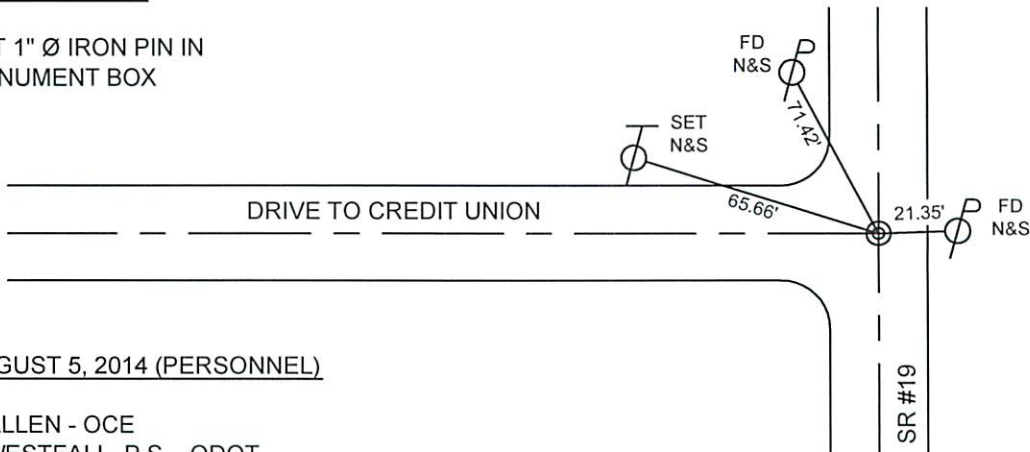
MISC. INFORMATION

FD PK NAIL AND WASHER ON SURFACE, TIED W/ GPS AND DUG
 FOR PIPE. FD PK AND WASHER 0.25' BELOW SURFACE 0.03' N
 AND 0.06' W OF SURFACE NAIL. FD PK AND WASHER 0.42' BELOW
 SURFACE 0.10' S AND 0.09' W OF SURFACE NAIL. FD PK AND
 WASHER 0.69' BELOW SURFACE 0.05' S AND 0.03' W OF SURFACE
 NAIL. FD PK 0.72' BELOW SURFACE 0.08' S AND 0.06' W OF
 SURFACE NAIL. SURFACE NAIL WAS 0.03' S AND 0.08' E OF FD PK
 NAIL IN 1/2" Ø IRON PIPE.
 8-5-2014 - SET 1" Ø IRON PIN IN FLOODED SAND IN 6" Ø PVC IN
 MONUMENT BOX.



AUGUST 5, 2014

SET 1" Ø IRON PIN IN
 MONUMENT BOX



AUGUST 5, 2014 (PERSONNEL)

J. ALLEN - OCE
 E. WESTFALL, P.S. - ODOT
 J. LEU, J. THOMAS - ODOT
 M&B CONSTRUCTION CREW