

# OTTAWA COUNTY ENGINEERS OFFICE

**REFERENCE NO.** 4-6-15-G  
 SW CORNER POST SECTION 4  
 SALEM TWP.  
**SHEET** 1 OF 1.

**ROUTE:** STATE ROUTE #19  
 @ DR. TO CREDIT UNION

**TOWNSHIP:** SALEM

**SECTION:** 4

**T** 6 **NR** 15 **E.**

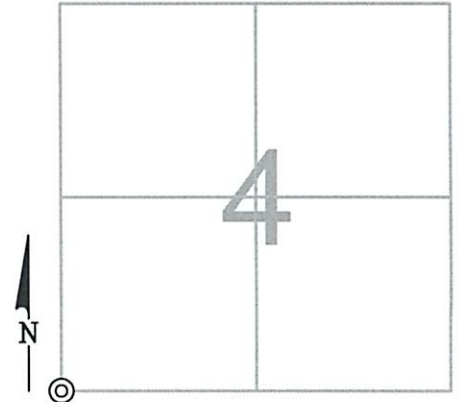
**PERSONNEL:**

M. WITTMAN, P.S.  
 J. ALLEN  
 E. WESTFALL, P.S. - ODOT  
 T. ROUSOS, J. RHODES - ODOT  
 J. LEU - ODOT

**NORTHING:**

**EASTING:**

**DATUM:**



**DATE / WEATHER / TEMP:**

OCTOBER 29, 2013  
 SUNNY-NE  
 52° F

MONUMENT INFORMATION

MONUMENT TYPE: FD. PK NAIL IN 1/2" Ø IRON PIPE  
 ON SURFACE - BELOW: 0.98'  
LEFT - CL PAV'T - RIGHT: 0.60'

IRON PIPE IN BRICK PAVEMENT PER COUNTY  
 SURVEY RECORDS. THIS WAS ACCEPTED AS  
 POINT.



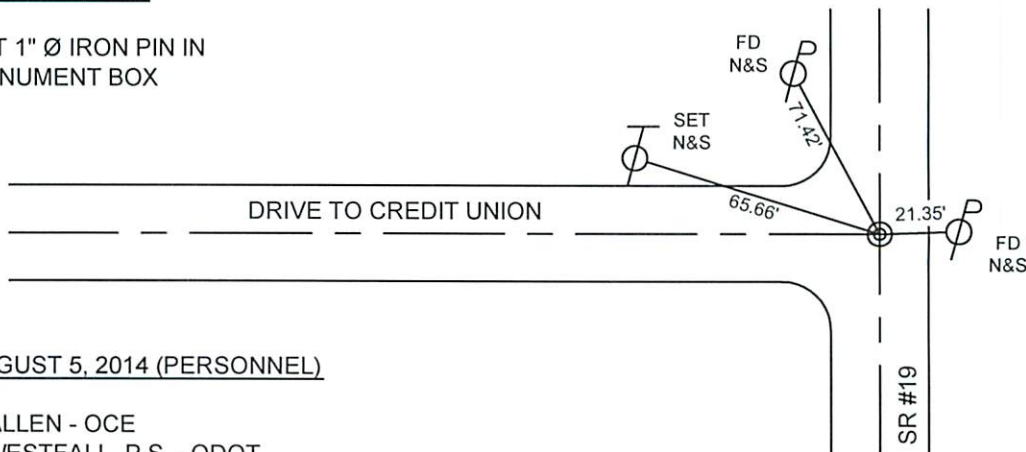
MISC. INFORMATION

FD PK NAIL AND WASHER ON SURFACE, TIED W/ GPS AND DUG  
 FOR PIPE. FD PK AND WASHER 0.25' BELOW SURFACE 0.03' N  
 AND 0.06' W OF SURFACE NAIL. FD PK AND WASHER 0.42' BELOW  
 SURFACE 0.10' S AND 0.09' W OF SURFACE NAIL. FD PK AND  
 WASHER 0.69' BELOW SURFACE 0.05' S AND 0.03' W OF SURFACE  
 NAIL. FD PK 0.72' BELOW SURFACE 0.08' S AND 0.06' W OF  
 SURFACE NAIL. SURFACE NAIL WAS 0.03' S AND 0.08' E OF FD PK  
 NAIL IN 1/2" Ø IRON PIPE.  
 8-5-2014 - SET 1" Ø IRON PIN IN FLOODED SAND IN 6" Ø PVC IN  
 MONUMENT BOX.



AUGUST 5, 2014

SET 1" Ø IRON PIN IN  
 MONUMENT BOX



AUGUST 5, 2014 (PERSONNEL)

J. ALLEN - OCE  
 E. WESTFALL, P.S. - ODOT  
 J. LEU, J. THOMAS - ODOT  
 M&B CONSTRUCTION CREW