

OTTAWA COUNTY ENGINEERS OFFICE

REFERENCE NO. 36-7-15-E
CENTER POST SECTION 36
SALEM TWP.
SHEET 1 OF 1.

ROUTE: T-105 BROKATE RD.

TOWNSHIP: SALEM

SECTION: 36

T 7 N R 15 E.

PERSONNEL:

M. WITTMAN, P.S.
J. ALLEN
S. ULLRICH
M. ULLRICH

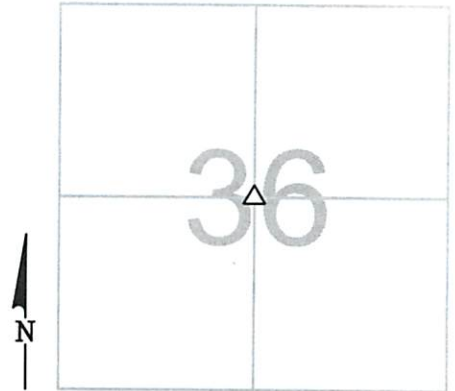
NORTHING:

EASTING:

DATUM:

DATE / WEATHER / TEMP:

JUNE 27, 2008
SUNNY SW
76° F

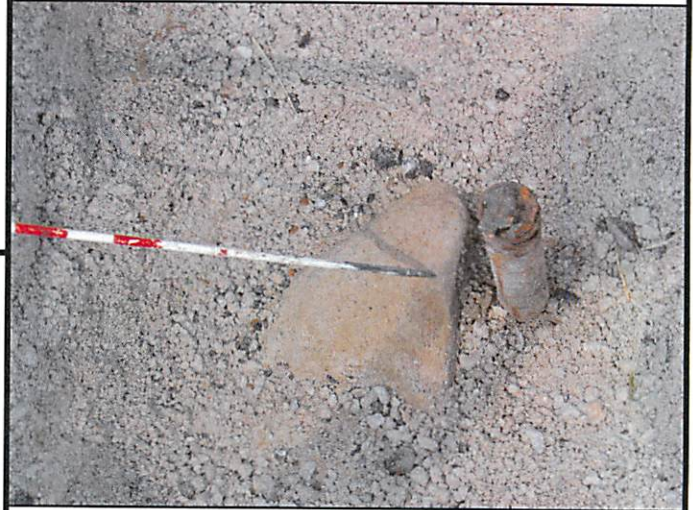


MONUMENT INFORMATION

MONUMENT TYPE: FD POINTED HARDHEAD
STONE W/ IRON PIN ON E. SIDE
ON SURFACE - BELOW: 1.75'
LEFT - CL PAV'T - RIGHT: 6.0'

TRIANGULAR STONE: 6" x 5"

USED POINT OF STONE



MISC. INFORMATION

JUNE 27, 2008

SET 1" SQUARE IRON PIN
IN MONUMENT BOX OVER
STONE

