

OTTAWA COUNTY ENGINEERS OFFICE

REFERENCE NO. 31-7-15-F
EAST QUARTER POST SEC. 31
SALEM TWP.
SHEET 1 OF 1.

ROUTE: T-92 TOUSSAINT PORTAGE RD.
@ T-228 CHRISTAINSEN RD.

TOWNSHIP: SALEM

SECTION: 31

T 7 NR 15 E.

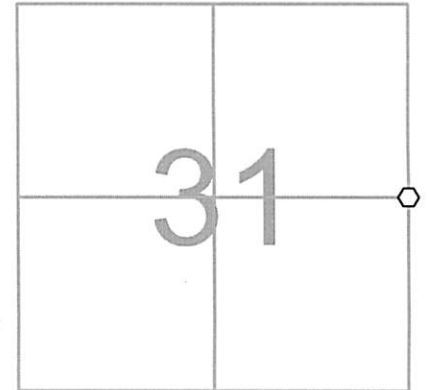
NORTHING:

EASTING:

DATUM:

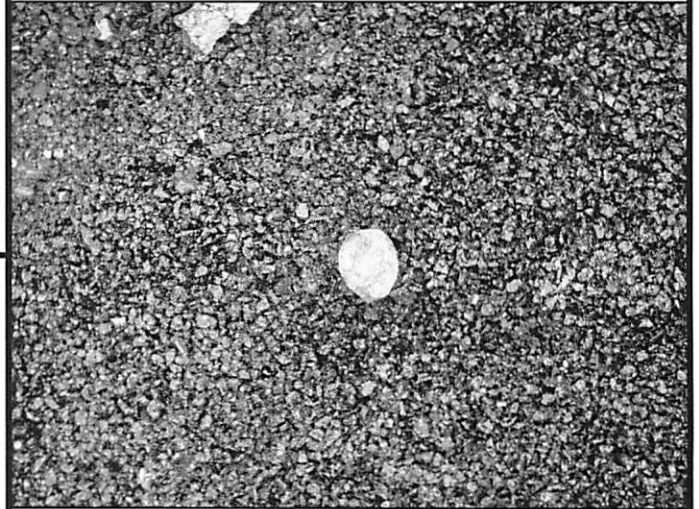
PERSONNEL:
M. WITTMAN, P.S.
J. ALLEN
E. KOCH

DATE / WEATHER / TEMP:
APRIL 23, 2010
SUNNY - E
58° F



MONUMENT INFORMATION

MONUMENT TYPE: FD. RR SPIKE
ON SURFACE - BELOW: 0.42'
LEFT - CL PAVT - RIGHT:



MISC. INFORMATION

FD. RR SPK 0.42' BELOW SURFACE. RR SPK
MATCHED REMAINING TIES FROM 1969 WHEN
STONE WAS FOUND 5'+ BELOW SURFACE.
REPLACED RR SPK WITH 1" SQ. IRON PIN IN
MONUMENT BOX.

