

OTTAWA COUNTY ENGINEERS OFFICE

REFERENCE NO. 31-7-15-D
W QUARTER POST SECTION 31
SALEM TWP.
SHEET 1 OF 1.

ROUTE: C-23 BENTON-CARROLL RD.

TOWNSHIP: SALEM

SECTION: 31

T 7 NR 15 E.

PERSONNEL:

M. WITTMAN, P.S.
J. ALLEN
K. SMITH
S. ULLRICH

NORTHING:

EASTING:

DATE / WEATHER / TEMP:

JULY 16, 2007
SUNNY
74° F

DATUM:



MONUMENT INFORMATION

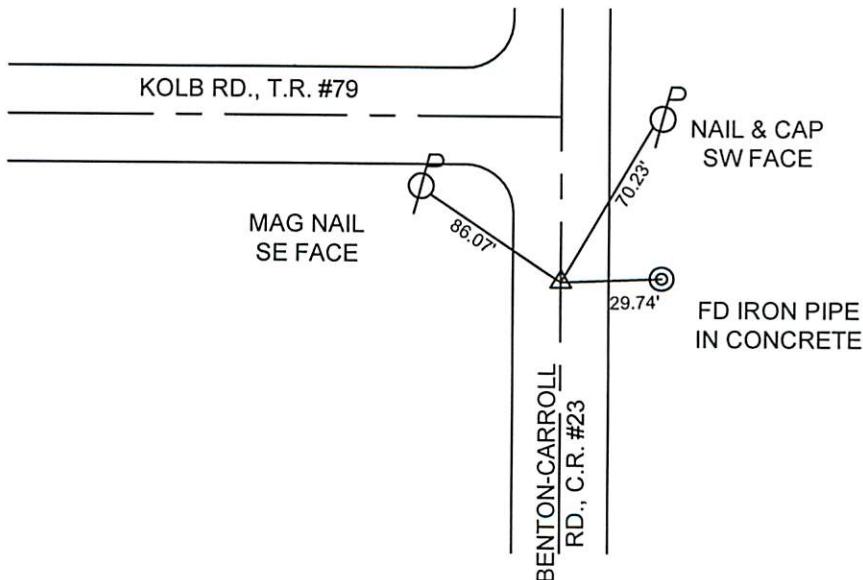
MONUMENT TYPE: FD STONE W/ DRILL HOLE
ON SURFACE - BELOW: 1.95'
LEFT - CL PAV'T - RIGHT: 2.75'
HOMEPLATE SHAPED FLAT TOP LIMESTONE:
3" x 6" x 8"

SET DRILL HOLE IN CENTER OF STONE



MISC. INFORMATION

THIS IS A CLOSING CORNER



JULY 16, 2007

SET 1" SQUARE IRON PIN
IN MONUMENT BOX OVER
STONE