

OTTAWA COUNTY ENGINEERS OFFICE

REFERENCE NO. 31-7-15-A
NW CORNER POST SECTION 31
SALEM TWP.
SHEET 1 OF 1.

ROUTE: C-23 BENTON-CARROLL RD.
@ C-98 SALEM-CARROLL RD. Δ

TOWNSHIP: SALEM

SECTION: 31

T 7 NR 15 E.

NORTHING:

EASTING:

DATUM:



PERSONNEL:
M. WITTMAN, P.S.
J. ALLEN
K. SMITH

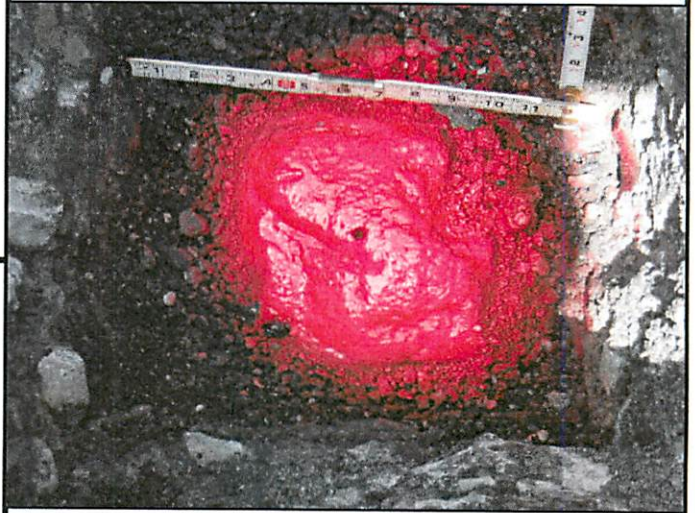
DATE / WEATHER / TEMP:
JULY 11, 2007
SUNNY W
80° F

MONUMENT INFORMATION

MONUMENT TYPE: FD STONE
ON SURFACE - BELOW: 2.10'
LEFT - CL PAV'T - RIGHT: 4'

HARD HEAD STONE 6" x 6"

SET DRILL HOLE IN CENTER OF STONE



MISC. INFORMATION

THIS IS A CLOSING CORNER

