

OTTAWA COUNTY ENGINEERS OFFICE

REFERENCE NO. 21-6-15-G
 SW CORNER POST SECTION 21
 SALEM TWP.
SHEET 1 OF 1.

ROUTE: STATE ROUTE #19
 @ T-10 LEASER RD.

TOWNSHIP: SALEM

SECTION: 21

T 6 **NR** 15 **E.**

PERSONNEL:

M. WITTMAN, P.S.
 C. MILLER
 E. WESTFALL, P.S., ODOT
 T. ROUSOS, J. RHODES - ODOT

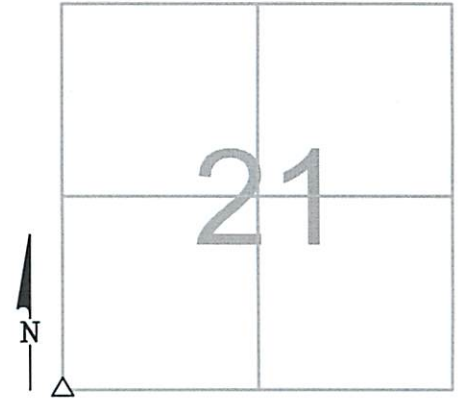
NORTHING:

EASTING:

DATE / WEATHER / TEMP:

OCTOBER 28, 2013
 SUNNY
 36° F

DATUM:

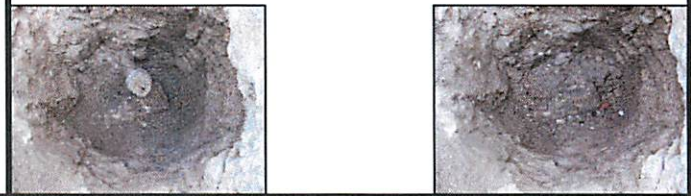


MONUMENT INFORMATION

MONUMENT TYPE: FD RECTANGULAR LIMESTONE
 ON SURFACE - BELOW: 2.37'
LEFT - CL PAV'T - RIGHT: 6.0'

7" X 3" X 4-1/2" LIMESTONE

SMALL POINT ON STONE - USED AS POINT.



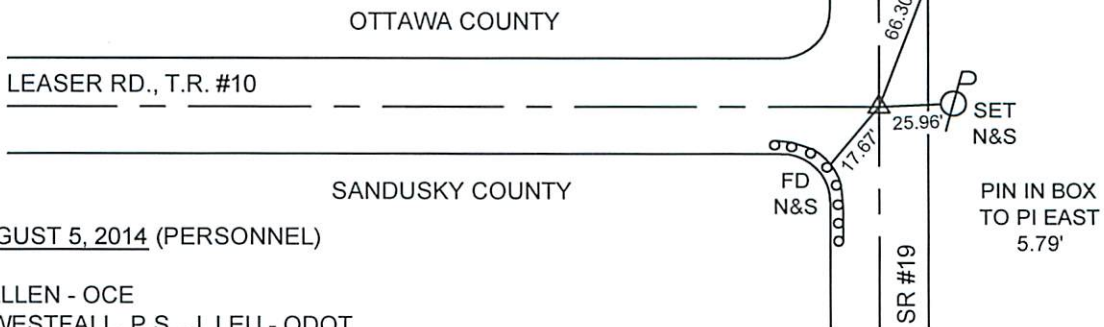
MISC. INFORMATION

FD PK AND WASHER ON SURFACE. FD RR SPK 0.26' BELOW SURFACE
 0.06' S AND 0.03' E OF SURFACE PK. FD RR SPK 0.40' BELOW SURFACE
 0.09' S AND 0.07' E OF SURFACE PK (FIRST RR SPK BENT OVER TOP OF
 SECOND RR SPK). FD 3/4" IRON PIN IN BRICK SURFACE 0.68' BELOW
 SURFACE 0.03' S AND 0.06' E OF SURFACE PK. FD 1-1/2" IRON PIPE 1.78'
 BELOW SURFACE 0.23' N AND 0.33' E OF SURFACE PK. FD STONE 2.37'
 BELOW SURFACE ON SE SIDE OF PIPE. POINT USED ON STONE WAS
 0.19' N AND 0.30' E OF SURFACE PK.

8-5-2014 - SET 1" Ø IRON PIN IN FLOODED SAND IN 6" Ø PVC IN
 MONUMENT BOX OVER STONE.

AUGUST 5, 2014

SET 1" Ø IRON PIN IN
 MONUMENT BOX OVER
 STONE



AUGUST 5, 2014 (PERSONNEL)

J. ALLEN - OCE
 E. WESTFALL, P.S., J. LEU - ODOT
 J. THOMAS - ODOT
 M&B CONSTRUCTION CREW