

# OTTAWA COUNTY ENGINEERS OFFICE

REFERENCE NO. 21-6-15-E  
CENTER POST SEC. 21  
SALEM TWP.  
SHEET 1 OF 1.

ROUTE: T-110 BLOOM RD.

TOWNSHIP: SALEM

SECTION: 21

T 6 NR 15 E.

**PERSONNEL:**

M. WITTMAN, P.S.  
J. ALLEN

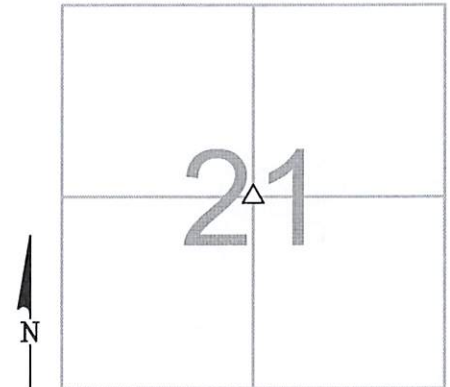
NORTHING:

EASTING:

DATUM:

**DATE / WEATHER / TEMP:**

SEPTEMBER 1, 2021  
SUNNY - S, SW  
73° F



MONUMENT INFORMATION

MONUMENT TYPE: FD POINTED LIMESTONE W/ DH  
ON SURFACE - BELOW: 1.57'  
LEFT - CL PAV'T - RIGHT: 7.70'

FD 6-1/2" X 7-1/2" TRIANGULAR POINTED  
LIMESTONE WITH DH

USED DH IN STONE

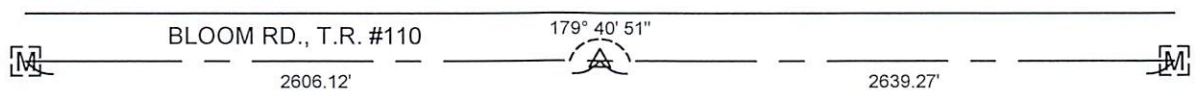


MISC. INFORMATION

NOTHING FOUND ON SURFACE. DIG HOLE AT  
LOCATION MATCHED CLOSELY WITH  
MEASUREMENTS OF RECORD. FD SCRAP IRON  
AND FLYWHEEL OF RECORD THAT WAS PLACED  
OVER THE STONE. STONE IS IN SOUTH EDGE  
OF PAVEMENT.

SEPTEMBER 1, 2021

SET 1" SQUARE IRON PIN  
IN MONUMENT BOX OVER  
STONE



W 1/4 POST  
SECTION 21

E 1/4 POST  
SECTION 21