

OTTAWA COUNTY ENGINEERS OFFICE

REFERENCE NO. 21-6-15-D
 WEST QUARTER POST SEC. 21
 SALEM TWP.
SHEET 1 OF 1.

ROUTE: STATE ROUTE #19
 @ T-110 BLOOM RD.

TOWNSHIP: SALEM

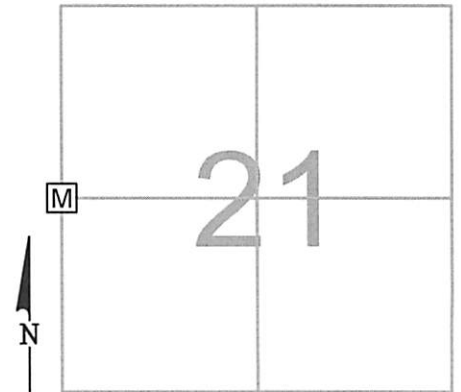
SECTION: 21

T 6 **N** 15 **E.**

NORTHING:

EASTING:

DATUM:



PERSONNEL:

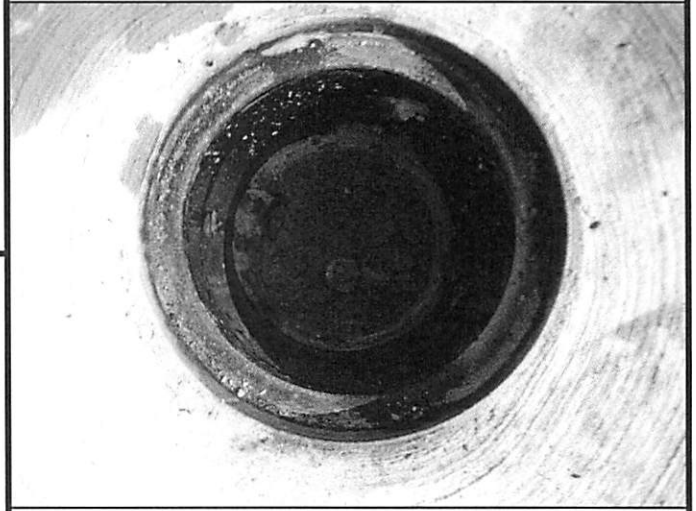
M. WITTMAN, P.S.
 J. ALLEN
 E. WESTFALL, P.S., ODOT
 T. ROUSOS, J. LEU - ODOT
 J. RHODES - ODOT

DATE / WEATHER / TEMP:

OCTOBER 28, 2013
 SUNNY
 49° F

MONUMENT INFORMATION

MONUMENT TYPE: SET 1" Ø IRON PIN IN MON BOX
ON SURFACE - BELOW:
 LEFT - CL PAV'T - RIGHT:

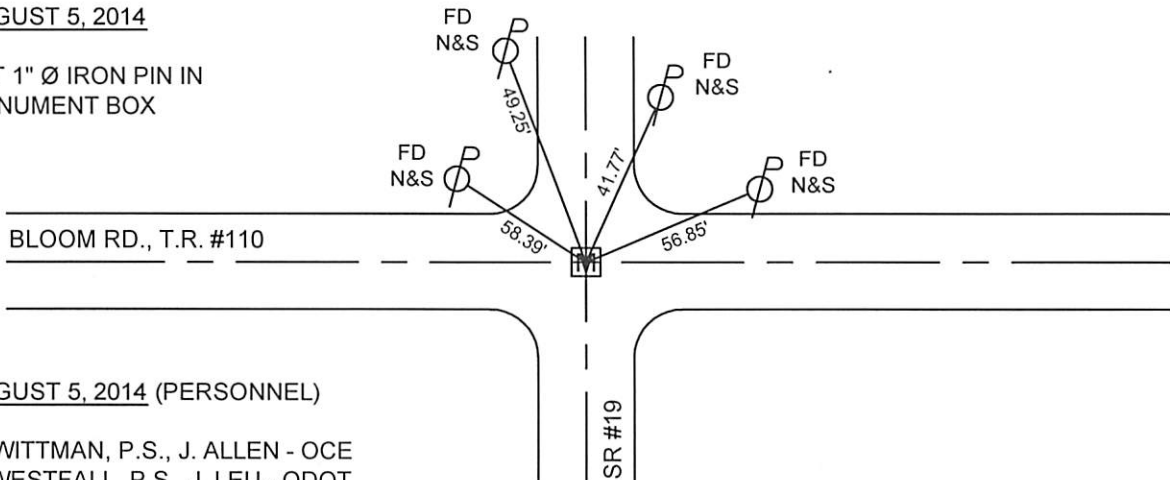


MISC. INFORMATION

STONE PER E. FRANCK 1873. FD. PONY SPK ON SURFACE. FD NAIL SHANK 0.46' BELOW SURFACE 0.01' N AND 0.06' E OF SURFACE PONY SPK. DUG TO CLAY AND PRODDED ANOTH 2.5 FEET DOWN AND DID NOT FIND STONE. RAN CALCULATIONS FOR POINT N,S,E AND W. 8--14 6-24-2014 - RETURNED TO SITE AND DUG 4.94' W AND 1.71' N WHERE POINT WAS CALCULATED PER OLD SURVEYS. DUG DOWN TO CLAY AND PRODDED ANOTHER 2.5 FEET DOWN AND DID NOT FIND STONE. PER DISCUSSION WITH COUNTY ENGINEER, DAVID A. BRUNKHORST, PE,RS, NAIL SHAFT FD ON 10-28-13 IS HONORED POINT. 8-5-2014 - SET 1" Ø IRON PIN IN FLOODED SAND IN 6" Ø PVC IN MONUMENT BOX.

AUGUST 5, 2014

SET 1" Ø IRON PIN IN
 MONUMENT BOX



AUGUST 5, 2014 (PERSONNEL)

M. WITTMAN, P.S., J. ALLEN - OCE
 E. WESTFALL, P.S., J. LEU - ODOT
 J. THOMAS - ODOT
 M&B CONSTRUCTION CREW