

# OTTAWA COUNTY ENGINEERS OFFICE

**REFERENCE NO.** 20-6-15-C  
 NE CORNER POST SECTION 20  
 SALEM TWP.  
**SHEET** 1 OF 1.

**ROUTE:** STATE ROUTE #19  
 @ C-108 HETRICK RD.

**TOWNSHIP:** SALEM

**SECTION:** 20

**T** 6 **NR** 15 **E.**

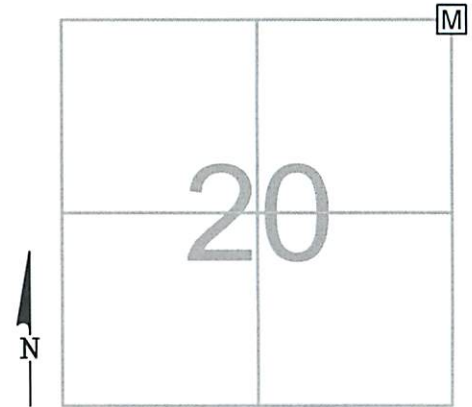
**NORTHING:**

**EASTING:**

**DATUM:**

**PERSONNEL:**  
 M. WITTMAN, P.S.  
 J. ALLEN

**DATE / WEATHER / TEMP:**  
 OCTOBER 29, 2013  
 SUNNY - E  
 38° F



MONUMENT INFORMATION

MONUMENT TYPE: SET 1" Ø IRON PIN IN MON BOX  
 ON SURFACE - BELOW:  
 LEFT - CL PAV'T - RIGHT:

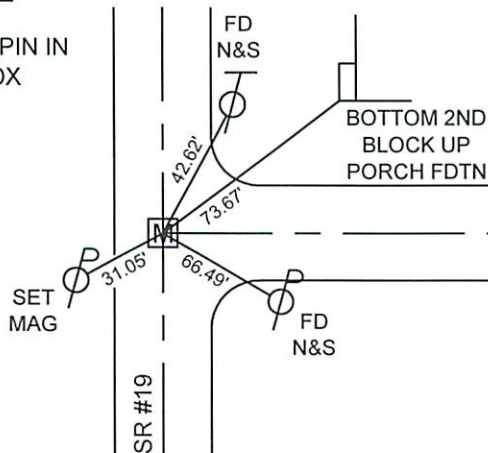


MISC. INFORMATION

STONE PER DEWITT 1892. FD N&S 0.14' BELOW SURFACE.  
 FD PONY SPK 0.38' BELOW SURFACE 0.02' S AND 0.02' E OF  
 SURFACE NAIL. FD PONY SPK 0.55' BELOW SURFACE 0.09' N  
 AND ONLINE EW OF SURFACE NAIL. DUG DOWN TO CLAY  
 SURFACE 1.55' AND PRODDED ANOTHER 2.5' DOWN - NO  
 STONE FOUND. USED LOCATION OF DEEPEST PONY SPK  
 AS POINT.  
 8-5-2014 - SET 1" Ø IRON PIN IN FLOODED SAND IN 6" Ø PVC  
 IN MONUMENT BOX.

AUGUST 5, 2014

SET 1" Ø IRON PIN IN  
 MONUMENT BOX



AUGUST 5, 2014 (PERSONNEL)

M. WITTMAN, P.S., J. ALLEN - OCE  
 R. NUHFER., P.S., J. LEU - ODOT  
 E. WESTFALL, P.S., J. THOMAS - ODOT  
 M&B CONSTRUCTION CREW

HETRICK RD., C.R. #108