

OTTAWA COUNTY ENGINEERS OFFICE

REFERENCE NO. 19-6-15-D
W QUARTER POST SECTION 19
HARRIS TWP.
SHEET 1 OF 1.

ROUTE: C-42 HARRIS-SALEM RD.

TOWNSHIP: SALEM

SECTION: 19

T 6 NR 15 E.

PERSONNEL:

M. WITTMAN, P.S.
J. ALLEN
K. SMITH
S. ULLRICH

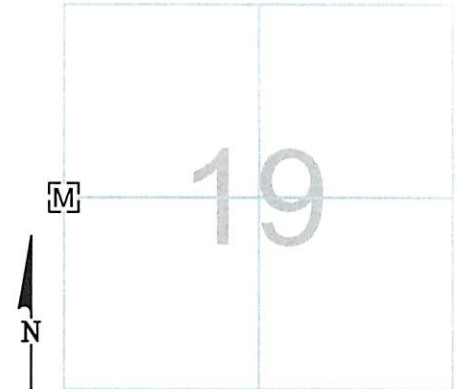
NORTHING:

EASTING:

DATE / WEATHER / TEMP:

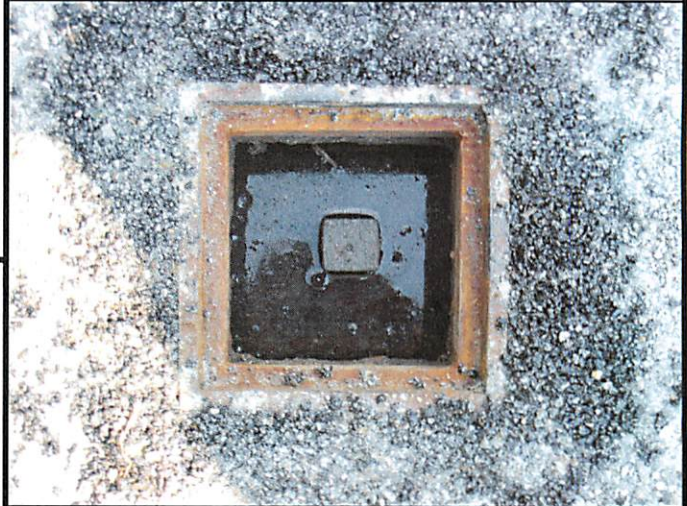
JULY 18, 2007
SUNNY
75° F

DATUM:



MONUMENT INFORMATION

MONUMENT TYPE: FD 1-1/4" SQ. IRON PIN IN
MONUMENT BOX
ON SURFACE - BELOW: 0.21'
LEFT - CL PAV'T - RIGHT: 2.5'



MISC. INFORMATION

7-16-1971 - FD. 5-1/2" x 4" x 8" HARDHEAD
TAPERED STONE 12-1/2" BELOW SURFACE. SET
DRILL HOLE IN TOP.

7-23-1971 - SET IRON PIN IN MONUMENT BOX
OVER STONE

