

OTTAWA COUNTY ENGINEERS OFFICE

REFERENCE NO. 17-6-15-I
 SE CORNER POST SECTION 17
 SALEM TWP.
 SHEET 1 OF 1.

ROUTE: STATE ROUTE #19
 @ C-108 HETRICK RD.

TOWNSHIP: SALEM

SECTION: 17

T 6 NR 15 E.

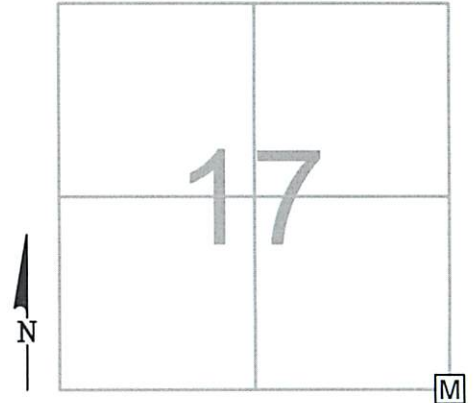
PERSONNEL:
 M. WITTMAN, P.S.
 J. ALLEN

NORTHING:

EASTING:

DATE / WEATHER / TEMP:
 OCTOBER 29, 2013
 SUNNY - E
 38° F

DATUM:



MONUMENT INFORMATION

MONUMENT TYPE: SET 1" Ø IRON PIN IN MON BOX
ON SURFACE - BELOW:
 LEFT - CL PAV'T - RIGHT:

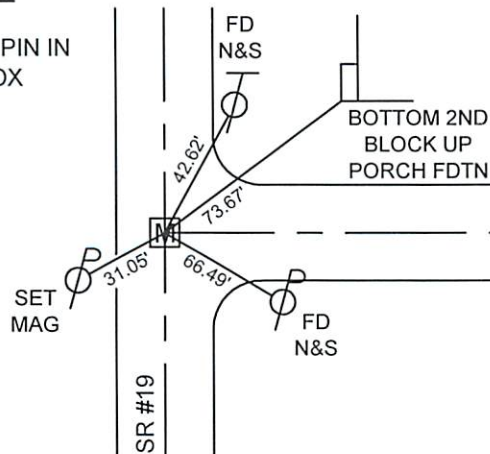


MISC. INFORMATION

STONE PER DEWITT 1892. FD N&S 0.14' BELOW SURFACE.
 FD PONY SPK 0.38' BELOW SURFACE 0.02' S AND 0.02' E OF
 SURFACE NAIL. FD PONY SPK 0.55' BELOW SURFACE 0.09' N
 AND ONLINE E/W OF SURFACE NAIL. DUG DOWN TO CLAY
 SURFACE 1.55' AND PRODDED ANOTHER 2.5' DOWN - NO
 STONE FOUND. USED LOCATION OF DEEPEST PONY SPK
 AS POINT.
 8-5-2014 - SET 1" Ø IRON PIN IN FLOODED SAND IN 6" Ø PVC
 IN MONUMENT BOX.

AUGUST 5, 2014

SET 1" Ø IRON PIN IN
 MONUMENT BOX



AUGUST 5, 2014 (PERSONNEL)

M. WITTMAN, P.S., J. ALLEN - OCE
 R. NUHFER., P.S., J. LEU - ODOT
 E. WESTFALL, P.S., J. THOMAS - ODOT
 M&B CONSTRUCTION CREW

HETRICK RD., C.R. #108