

# OTTAWA COUNTY ENGINEERS OFFICE

**REFERENCE NO.** 17-6-15-F  
 EAST QUARTER POST SEC. 17  
 SALEM TWP.  
**SHEET** 1 OF 1.

**ROUTE:** STATE ROUTE #19  
 @ T-6 ELMORE EASTERN RD.

**TOWNSHIP:** SALEM

**SECTION:** 17

**T** 6 **NR** 15 **E.**

**PERSONNEL:**

M. WITTMAN, P.S.  
 J. ALLEN  
 E. WESTFALL, P.S. - ODOT  
 T. ROUSOS, J. RHODES - ODOT  
 J. LEU - ODOT

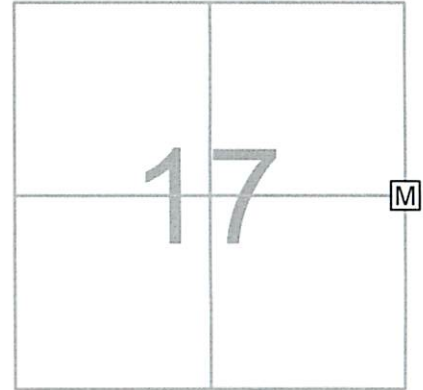
**NORTHING:**

**EASTING:**

**DATE / WEATHER / TEMP:**

OCTOBER 29, 2013  
 SUNNY  
 42° F

**DATUM:**



MONUMENT INFORMATION

MONUMENT TYPE: SET 1" Ø IRON PIN IN MON BOX  
 ON SURFACE - BELOW:  
LEFT - CL PAV'T - RIGHT: 1.10'

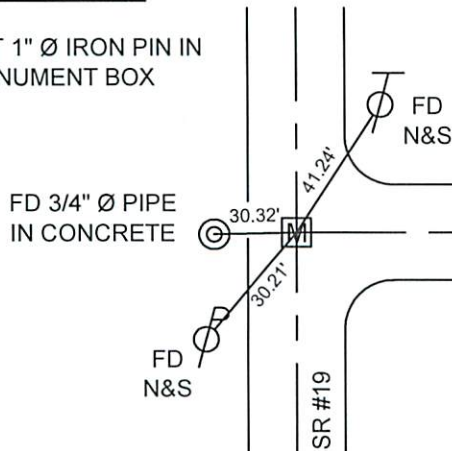


MISC. INFORMATION

STONE PER DEWITT 1892. FD PK AND WASHER ON SURFACE. FD PK 0.50' BELOW SURFACE 0.03' S AND 0.08' W OF SURFACE NAIL. FD RR SPK 0.64' BELOW SURFACE 0.04'S AND 0.06'W OF SURFACE NAIL. HIT BRICK 0.75' BELOW SURFACE. DUG DOWN 2.4' AND DID NOT FIND A STONE. USED LOCATION OF RR SPK AS POINT.  
 8-5-2014 - SET 1" Ø IRON PIN IN FLOODED SAND IN 6" Ø PVC IN MONUMENT BOX.

AUGUST 5, 2014

SET 1" Ø IRON PIN IN MONUMENT BOX



AUGUST 5, 2014 (PERSONNEL)

M. WITTMAN, P.S., J. ALLEN - OCE  
 R. NUHFER, P.S., J. LEU - ODOT  
 E. WESTFALL, P.S., J. THOMAS - ODOT  
 M&B CONSTRUCTION CREW