

# OTTAWA COUNTY ENGINEERS OFFICE

**REFERENCE NO.** 17-6-15-C  
 NE CORNER POST SECTION 17  
 SALEM TWP.  
**SHEET** 1 OF 1.

**ROUTE:** STATE ROUTE #19  
 @ T-107 CULLMAN RD.

**TOWNSHIP:** SALEM

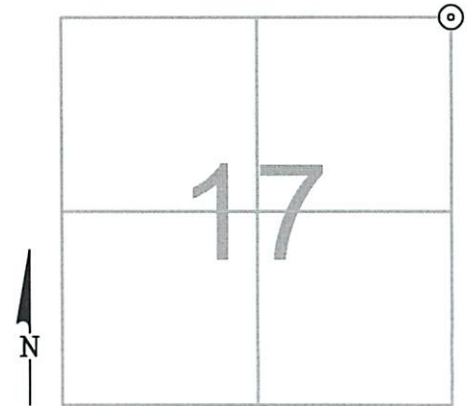
**SECTION:** 17

T 6 NR 15 E.

**NORTHING:**

**EASTING:**

**DATUM:**



**PERSONNEL:**  
 M. WITTMAN, P.S.  
 J. ALLEN

**DATE / WEATHER / TEMP:**  
 NOVEMBER 5, 2013  
 CLOUDY  
 54° F

MONUMENT INFORMATION

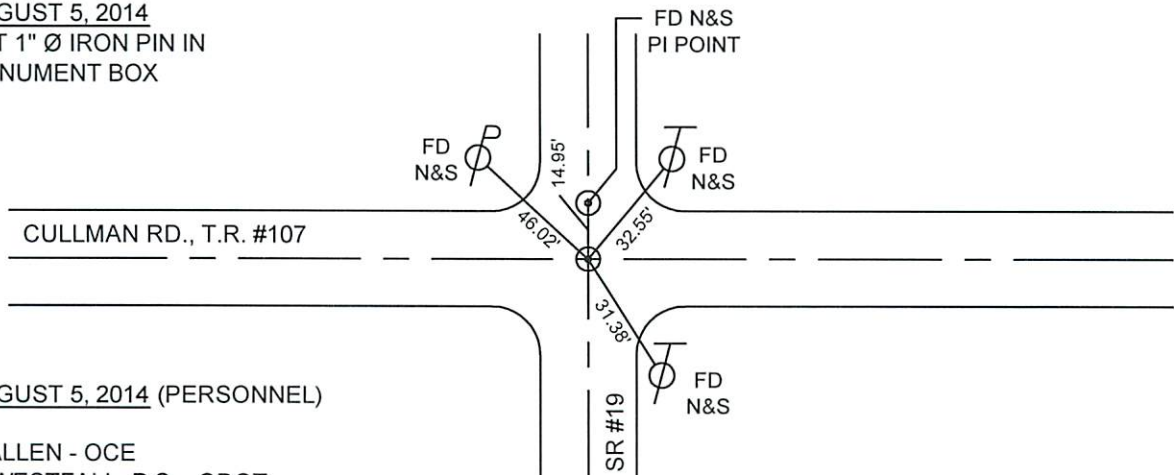
MONUMENT TYPE: FD PK NAIL AND WASHER  
 ON SURFACE - BELOW:  
LEFT - CL PAV'T - RIGHT: 0.50'



MISC. INFORMATION

NO STONE FOUND. NAIL AND WASHER WAS  
 VERIFIED IN ALL FOUR DIRECTIONS AND ACCEPTED  
 AS POINT. THIS POINT HAS BEEN HISTORICALLY  
 REFERRED TO AS A NAIL AND SHINER PER COUNTY  
 SURVEY RECORDS.

AUGUST 5, 2014  
 SET 1" Ø IRON PIN IN  
 MONUMENT BOX



AUGUST 5, 2014 (PERSONNEL)

J. ALLEN - OCE  
 E. WESTFALL, P.S. - ODOT  
 J. LEU, J. THOMAS - ODOT  
 M&B CONSTRUCTION CREW