

OTTAWA COUNTY ENGINEERS OFFICE

REFERENCE NO. 16-6-15-A
 NW CORNER POST SECTION 16
 SALEM TWP.
SHEET 1 **OF** 1

ROUTE: STATE ROUTE #19
 @ T-107 CULLMAN RD.

TOWNSHIP: SALEM

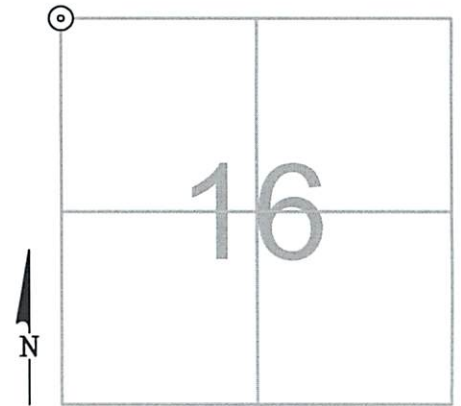
SECTION: 16

T 6 **NR** 15 **E.**

NORTHING:

EASTING:

DATUM:



PERSONNEL:
 M. WITTMAN, P.S.
 J. ALLEN

DATE / WEATHER / TEMP:
 NOVEMBER 5, 2013
 CLOUDY
 54° F

MONUMENT INFORMATION

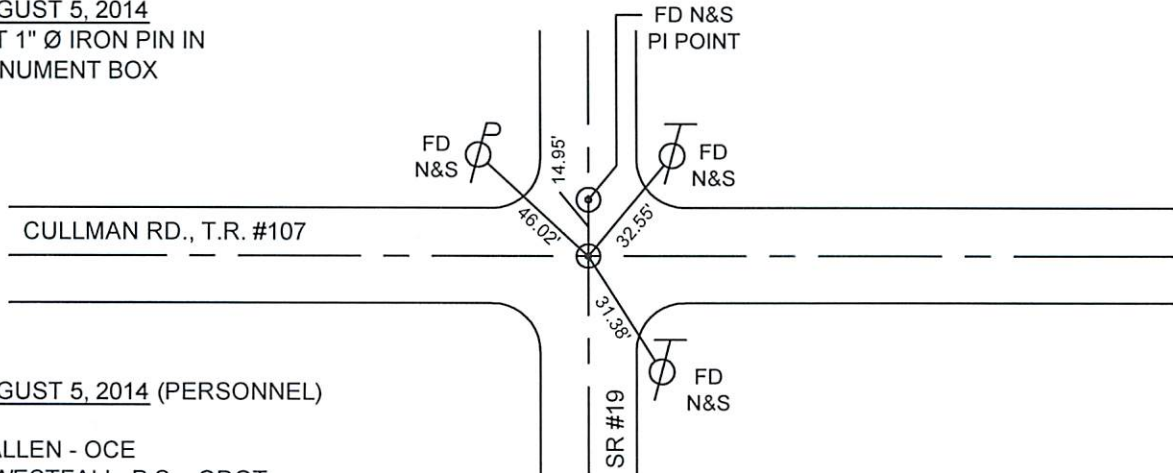
MONUMENT TYPE: FD PK NAIL AND WASHER
 ON SURFACE - BELOW:
LEFT - CL PAV'T - RIGHT: 0.50'



MISC. INFORMATION

NO STONE FOUND. NAIL AND WASHER WAS
 VERIFIED IN ALL FOUR DIRECTIONS AND ACCEPTED
 AS POINT. THIS POINT HAS BEEN HISTORICALLY
 REFERRED TO AS A NAIL AND SHINER PER COUNTY
 SURVEY RECORDS.

AUGUST 5, 2014
 SET 1" Ø IRON PIN IN
 MONUMENT BOX



AUGUST 5, 2014 (PERSONNEL)

J. ALLEN - OCE
 E. WESTFALL, P.S. - ODOT
 J. LEU, J. THOMAS - ODOT
 M&B CONSTRUCTION CREW