

# OTTAWA COUNTY ENGINEERS OFFICE

REFERENCE NO. 15-6-15-1  
SE CORNER POST SEC. 15  
SALEM TWP.  
SHEET 1 OF 1.

ROUTE: C-108 HETRICK RD.  
@ T-168 BOLSINGER RD.

TOWNSHIP: SALEM

SECTION: 15

T 6 NR 15 E.

NORTHING:

EASTING:

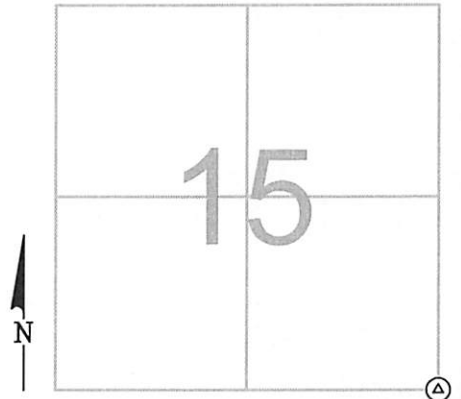
DATUM:

**PERSONNEL:**

M. WITTMAN, P.S.  
J. ALLEN  
B. BRADY  
T. FOCHT  
J. RACE

**DATE / WEATHER / TEMP:**

MAY 10, 2023  
SUNNY - E  
68° F



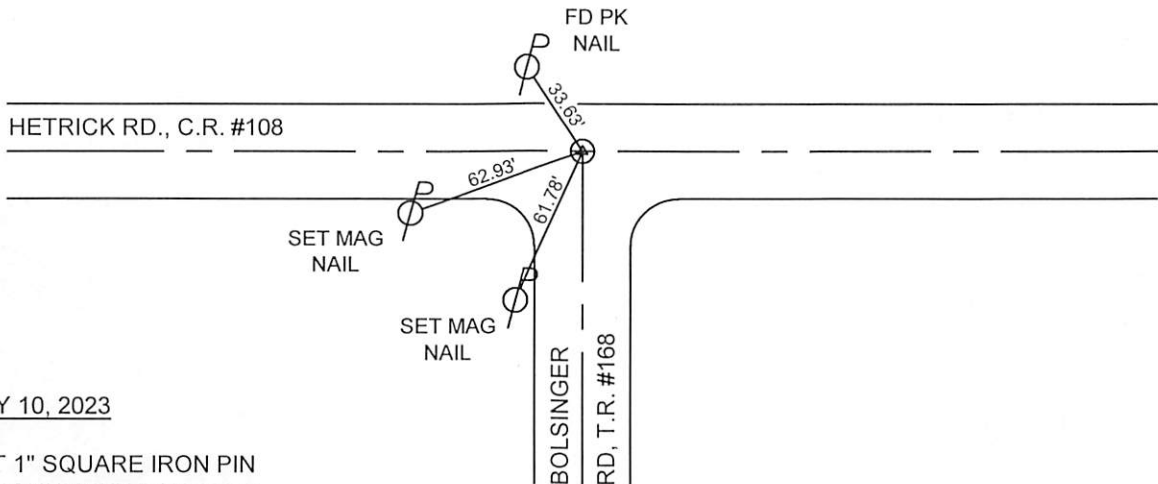
### MONUMENT INFORMATION

MONUMENT TYPE: FD CONCRETE MONUMENT  
ON SURFACE - BELOW: 1.36'  
LEFT - CL PAV'T - RIGHT: 0.40' HETRICK ROAD  
LEFT - CL PAV'T - RIGHT: 1.00' BOLSINGER ROAD  
  
BRASS SHAFT FROM BRASS DISK IN CONCRETE



### MISC. INFORMATION

FD RR SPIKE 0.25' BELOW SURFACE, TIED WITH X-TIES AND DUG FOR BRASS DISK ON RECORD. FD CONCRETE MONUMENT WITH BROKEN OFF SIDES, ALL THAT REMAINED OF THE DISK WAS THE SHAFT IN CONCRETE. FD MONUMENT WAS SOLID AND ACCEPTED AS CORRECT POINT. RR SPIKE WAS 0.10' NORTH AND ONLINE EAST AND WEST.



MAY 10, 2023

SET 1" SQUARE IRON PIN  
IN MONUMENT BOX OVER  
BRASS SHAFT IN CONCRETE