

OTTAWA COUNTY ENGINEERS OFFICE

REFERENCE NO. 13-6-15-G
 SW CORNER POST SEC. 13
 SALEM TWP.
 SHEET 1 OF 1.

ROUTE: T-217 MUDDY CREEK NORTH RD.

TOWNSHIP: SALEM

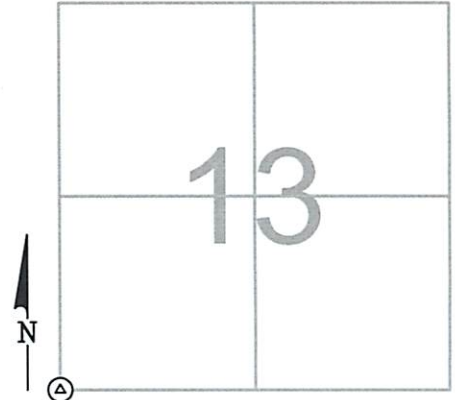
SECTION: 13

T 6 NR 15 E.

NORTHING:

EASTING:

DATUM:



PERSONNEL:
 M. WITTMAN, P.S.
 J. ALLEN

DATE / WEATHER / TEMP:
 APRIL 21, 2014
 SUNNY - SW
 70° F

MONUMENT INFORMATION

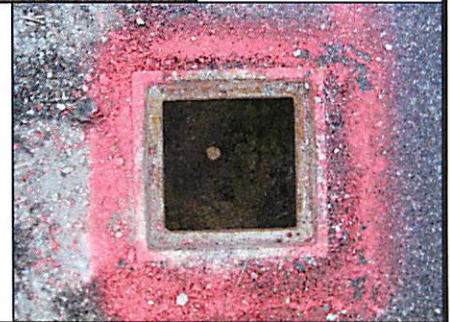
MONUMENT TYPE: SET 5/8" Ø IRON PIN IN MON BOX
ON SURFACE - BELOW:
LEFT - CL PAV'T - RIGHT: 8.30'

FD CONCRETE MONUMENT WITH BRASS DISK
 SEVERELY LEANING IN NORTHWESTERLY
 DIRECTION RESET IRON PIN.



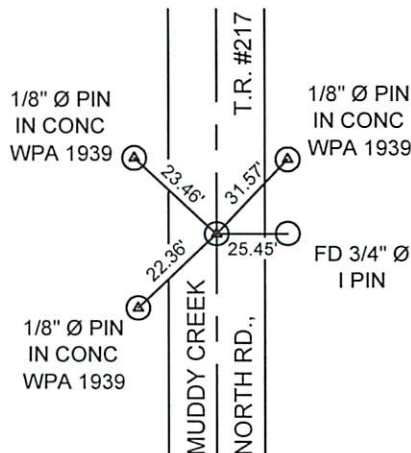
MISC. INFORMATION

FD PK NAIL AND SHINER ON SURFACE OVER A FD CONCRETE
 MONUMENT LEANING NORTHWESTERLY, SET BY D. GULAU PER
 1993 SURVEY. FD PK NAIL AND SHINER CHECKED CLOSELY WITH
 1939 WPA TIES FROM ESTABLISHMENT OF CONCRETE MONUMENT.
 DUG UP 6" Ø CONC MON AND VERIFIED IT IS DISTURBED AND
 LEANING. EXPOSED THE TOP 18" OF MONUMENT AND USED PROD
 TO FIND SE MOST EDGE OF BOTTOM OF MONUMENT. MEASURED
 3" IN LINE FROM FD SE EDGE NW TO CENTER OF TOP OF
 MONUMENT TO DETERMINE CENTER OF MONUMENT IF IT WERE
 UPRIGHT, A 5/8" Ø IRON PIN IN A MONUMENT BOX WAS SET AT
 THIS POINT AS SECTION CORNER.



APRIL 21, 2014

SET 5/8" Ø IRON PIN IN
 MONUMENT BOX



NOTE:

NW WPA 1939 WITNESS MONUMENT
 HAS BEEN DISTURBED. NE & SW WPA
 1939 WITNESS MONUMENT DISTANCES
 DID NOT INTERSECT WHICH MEANS
 ONE OR BOTH HAVE ALSO BEEN
 DISTURBED. ARCS FROM ALL THREE
 WITNESS MONUMENTS CREATED A
 TRIANGULAR GAP THEREFORE A POINT
 COULD NOT BE RESET BASED FROM
 TIES. THE SURFACE PK NAIL AND
 SHINER WAS LOCATED IN THE CENTER
 OF THE TRIANGULAR GAP.