

# OTTAWA COUNTY ENGINEERS OFFICE

REFERENCE NO. 12-6-15-H  
SOUTH QUARTER POST SEC. 12  
SALEM TWP.  
SHEET 1 OF 1.

ROUTE: C-17 OAK HARBOR SE RD.

TOWNSHIP: SALEM

SECTION: 12

T 6 NR 15 E.

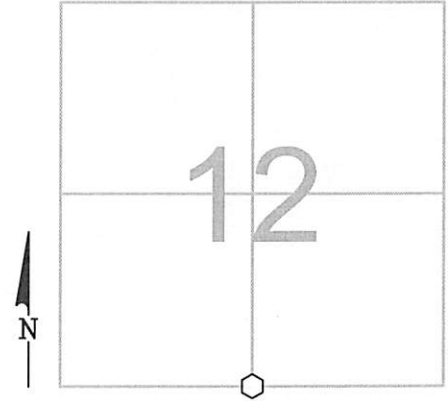
**PERSONNEL:**

M. WITTMAN, P.S.  
J. ALLEN  
C. MILLER  
B. BRADY

NORTHING:

EASTING:

DATUM:



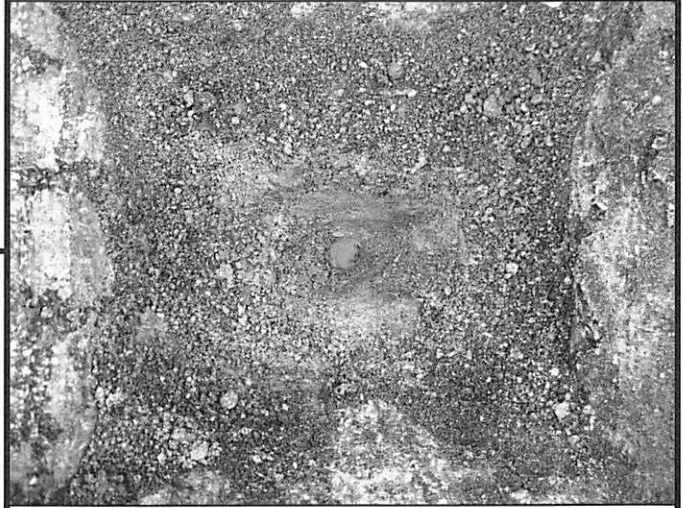
**DATE / WEATHER / TEMP:**

APRIL 18, 2023  
OVERCAST - S  
32° F

MONUMENT INFORMATION

MONUMENT TYPE: FD RAILROAD SPIKE  
ON SURFACE - BELOW: 1.05'  
LEFT - CL PAV'T - RIGHT: 0.80'

RAILROAD SPIKE PER RECORDS



MISC. INFORMATION

FD DIG HOLE ON SURFACE WITH A FAINT  
MAGNETIC RING. NO PERPETUATION MONUMENTS  
WERE FOUND UNTIL THE RAILROAD SPIKE ON  
RECORD WAS LOCATED.

APRIL 18, 2023

SET 1" SQUARE IRON PIN  
IN MONUMENT BOX OVER  
RAILROAD SPIKE

