

OTTAWA COUNTY ENGINEERS OFFICE

REFERENCE NO. 11-6-15-E
 CENTER POST SECTION 10
 SALEM TWP.
 SHEET 1 OF 1.

ROUTE: C-18 PORTAGE RIVER SOUTH RD.

TOWNSHIP: SALEM

SECTION: 11

T 6 NR 15 E.

PERSONNEL:
 M. WITTMAN, P.S.
 J. ALLEN
 S. ULLRICH
 M. ULLRICH

NORTHING:

EASTING:

DATUM:



DATE / WEATHER / TEMP:
 JUNE 24, 2008
 SUNNY E
 73° F

MONUMENT INFORMATION

MONUMENT TYPE: FD STONE W/ DRILL HOLE
 ON SURFACE - BELOW: 1.21'
 LEFT - CL PAV'T - RIGHT: 10.09'

 RECTANGULAR STONE: 6" x 10"

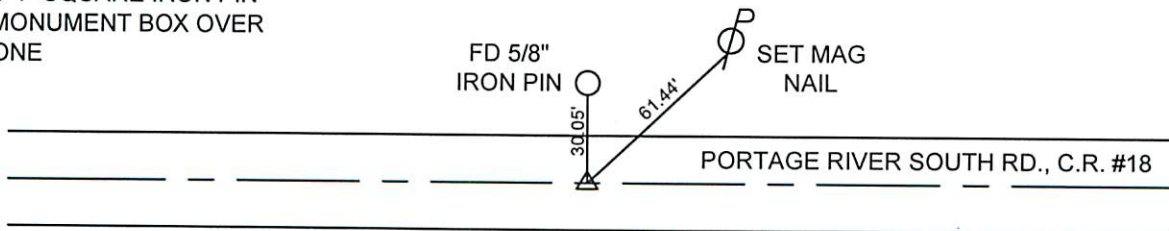


MISC. INFORMATION

FD UNREADABLE CAPPED 1/2" IRON PIN IN BERM,
 2.0' S. OF C/L OF S. WHITE PAVEMENT LINE, TIED
 PIN W/SHORT TIES. DUG TO STONE. PIN WAS IN
 PIPE ON NORTH SIDE OF STONE. PIN DID NOT
 FIT DRILL HOLE IN STONE. DROVE PIN FUTHER
 DOWN AND SET NEW PIN OVER DRILL HOLE.

JUNE 24, 2008

SET 1" SQUARE IRON PIN
 IN MONUMENT BOX OVER
 STONE



SHORT PK TIES
 PK NW - 11.05'
 PK N - 5.10'
 PK NE - 8.38'