

# OTTAWA COUNTY ENGINEERS OFFICE

REFERENCE NO. 10-6-15-D  
 WEST QUARTER POST SEC. 10  
 SALEM TWP.  
 SHEET 1 OF 1.

ROUTE: C-18 PORTAGE RIVER SOUTH RD.,  
 @ T-221 BEBOW RD.

TOWNSHIP: SALEM

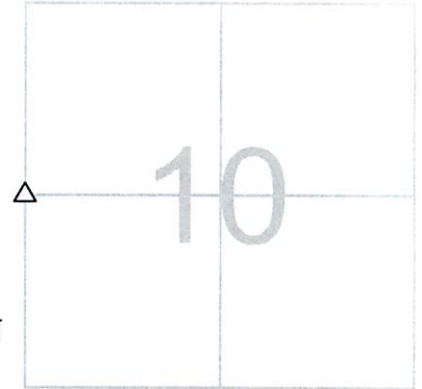
SECTION: 10

T 6 NR 15 E.

NORTHING:

EASTING:

DATUM:



PERSONNEL:  
 M. WITTMAN, P.S.  
 B. JEFFRIES  
 M. ULLRICH  
 S. ULLRICH

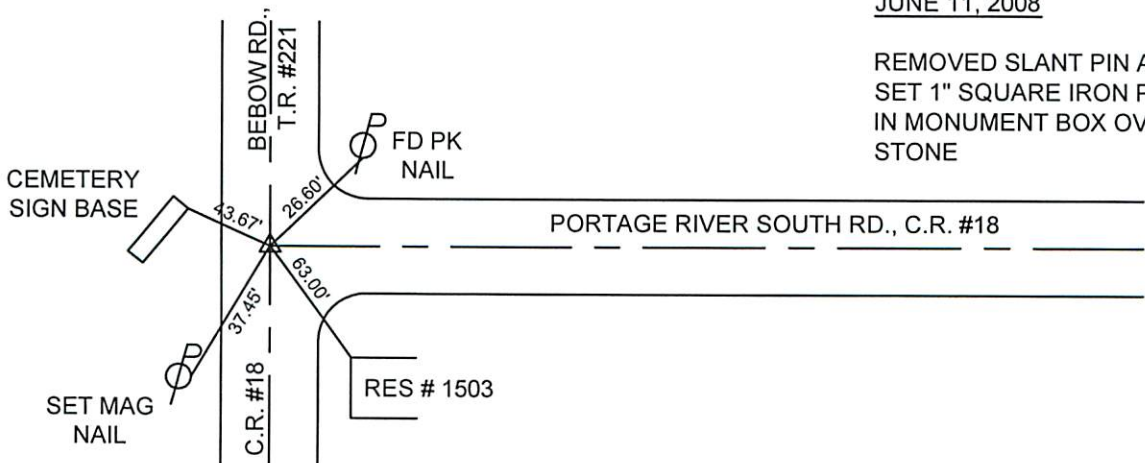
DATE / WEATHER / TEMP:  
 JUNE 11, 2008  
 SUNNY SW  
 75° F

### MONUMENT INFORMATION

MONUMENT TYPE: FD STONE W/ DRILL HOLE &  
 "X" W/ 1" Ø SLANT PIN OVER STONE  
 ON SURFACE - BELOW: 1.40'  
 LEFT - CL PAV'T - RIGHT: 8.0'  
  
 RECTANGULAR STONE: 7" x 5 1/2"



### MISC. INFORMATION



JUNE 11, 2008

REMOVED SLANT PIN AND  
 SET 1" SQUARE IRON PIN  
 IN MONUMENT BOX OVER  
 STONE