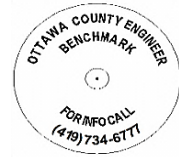


# OTTAWA COUNTY BENCHMARK DATA SHEET



## SAL MAINT

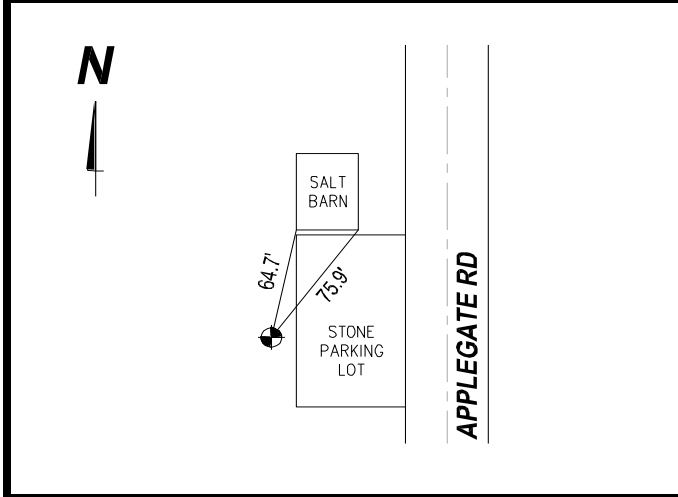
<b>Township</b>	<b>Section</b>	<b>Town</b>	<b>Range</b>	<b>Type of Monument</b>
Salem	8	T6N	R15E	3 1/4" Domed Bronze Disk in Concrete (OCE Spec. BM-1)
<b>Set By</b>	<b>Shot By</b>	<b>Calculated</b>	<b>Calculated By</b>	<b>Published</b>
OCE / OCHD	J. Allen	March 8, 2012	M. J. Wittman, P.S.	March 16, 2012

**Location**

West of stone parking lot on west side of Applegate Rd., T.R. #232 behind Maintenance Barns

Vertical Control		
<b>Vertical Datum</b>	<b>Method</b>	<b>Elevation (U.S. Survey Feet)</b>
NAVD 88	GPS	586.09

Horizontal Control			
<b>Horizontal Datum</b>	<b>Zone</b>	<b>Northing</b>	<b>Easting</b>
NAD 83 CORS 96	OHIO NORTH 3401	667,382.852	1,789,037.850
<b>Method</b>	<b>Latitude</b>	<b>Longitude</b>	
GPS / CORPSCON	41° 29' 47.86778" N	83° 09' 18.41649" W	
<b>Geoid</b>	<b>Scale Factor</b>	<b>Convergence</b>	
GEOID 09	0.999967116	- 00° 25' 49.36245"	



- NOTES:**
1. Monument set: July 7, 2011
  2. Data Collected: 2-6-12, 2-14-12, 2-28-12