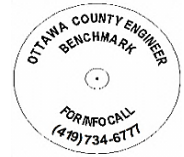




# OTTAWA COUNTY BENCHMARK DATA SHEET



## SAL 226-0.0

<b>Township</b>	<b>Section</b>	<b>Town</b>	<b>Range</b>	<b>Type of Monument</b>
Salem	11	T6N	R15E	3 1/4" Domed Bronze Disk in Concrete (OCE Spec. BM-1)
<b>Set By</b>	<b>Shot By</b>	<b>Calculated</b>	<b>Calculated By</b>	<b>Published</b>
OCE / OCHD	J. Allen	March 8, 2012	M. J. Wittman, P.S.	March 16, 2012

### Location

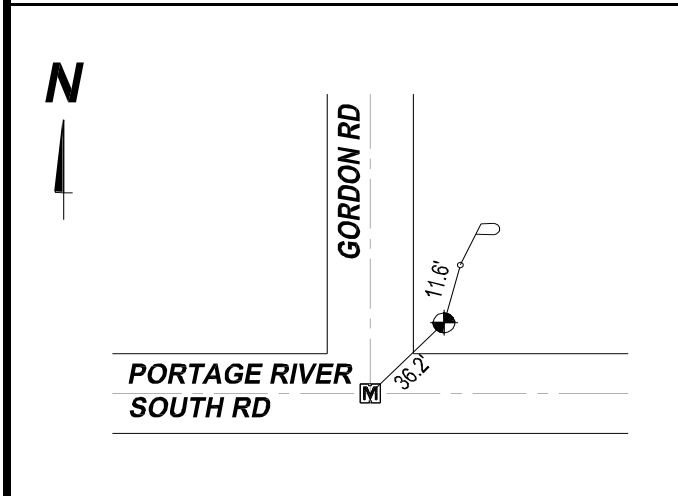
Northeast corner of the intersection of Gordon Rd., T.R.#226 & Portage River South Rd., C.R. #18

### Vertical Control

<b>Vertical Datum</b>	<b>Method</b>	<b>Elevation (U.S. Survey Feet)</b>
NAVD 88	GPS	579.90

### Horizontal Control

<b>Horizontal Datum</b>	<b>Zone</b>	<b>Northing</b>	<b>Easting</b>
NAD 83 CORS 96	OHIO NORTH 3401	666,218.156	1,802,373.087
<b>Method</b>	<b>Latitude</b>	<b>Longitude</b>	
GPS / CORPSCON	41° 29' 37.31363" N	83° 06' 23.06984" W	
<b>Geoid</b>	<b>Scale Factor</b>	<b>Convergence</b>	
GEOID 09	0.999966735	- 00° 23' 54.16841"	



- NOTES:**
1. Monument set: July 7, 2011
  2. Data Collected: 2-6-12, 2-14-12, 2-28-12