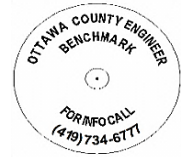


# OTTAWA COUNTY BENCHMARK DATA SHEET



## SAL 19-2.6

Township	Section	Town	Range	Type of Monument
Salem	9	T6N	R15E	3 1/4" Domed Bronze Disk in Concrete (OCE Spec. BM-1)
<b>Set By</b>	<b>Shot By</b>	<b>Calculated</b>	<b>Calculated By</b>	<b>Published</b>
OCE / OCHD	J. Allen	March 8, 2012	M. J. Wittman, P.S.	March 16, 2012

### Location

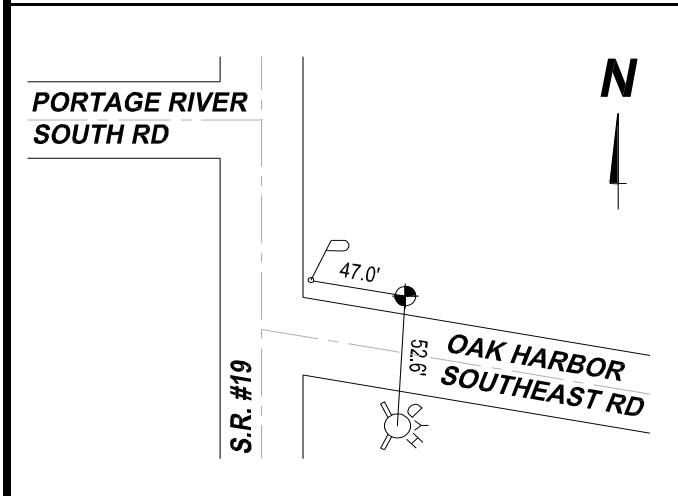
Northeast corner of the intersection of State Route #19 & Oak Harbor Southeast Rd., C.R. #17

### Vertical Control

Vertical Datum	Method	Elevation (U.S. Survey Feet)
NAVD 88	GPS	584.25

### Horizontal Control

Horizontal Datum	Zone	Northing	Easting
NAD 83 CORS 96	OHIO NORTH 3401	667,597.310	1,791,804.191
<b>Method</b>	<b>Latitude</b>	<b>Longitude</b>	
GPS / CORPSCON	41° 29' 50.19030" N	83° 08' 42.08457" W	
<b>Geoid</b>	<b>Scale Factor</b>	<b>Convergence</b>	
GEOID 09	0.999967201	- 00° 25' 25.49419	



- NOTES:**
1. Monument set: July 7, 2011
  2. Data Collected: 2-6-12, 2-14-12, 2-28-12