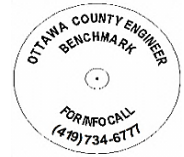




OTTAWA COUNTY BENCHMARK DATA SHEET



SAL 169-0.0

Township	Section	Town	Range	Type of Monument
Salem	21	T6N	R15E	3 1/4" Domed Bronze Disk in Concrete (OCE Spec. BM-1)
Set By	Shot By	Calculated	Calculated By	Published
OCE / OCHD	J. Allen	March 8, 2012	M. J. Wittman, P.S.	March 16, 2012

Location

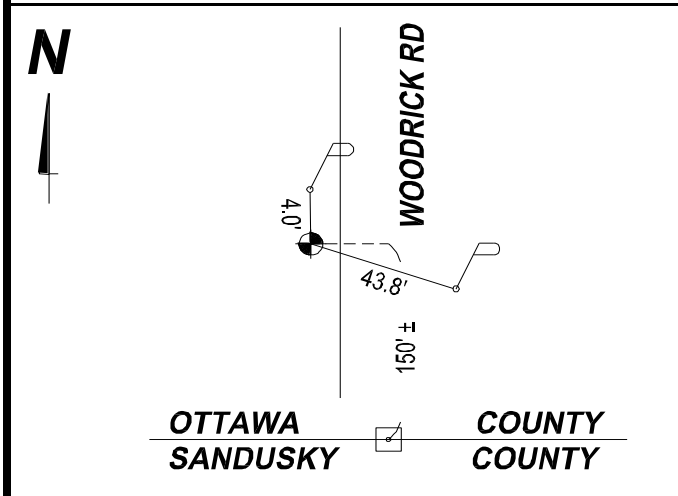
West side of Woodrick Rd., T.R. #169, 150' +/- north of Ottawa / Sandusky County Line

Vertical Control

Vertical Datum	Method	Elevation (U.S. Survey Feet)
NAVD 88	GPS	581.71

Horizontal Control

Horizontal Datum	Zone	Northing	Easting
NAD 83 CORS 96	OHIO NORTH 3401	653,241.594	1,796,954.984
Method	Latitude	Longitude	
GPS / CORPSCON	41° 27' 28.72817" N	83° 07' 33.04295" W	
Geoid	Scale Factor	Convergence	
GEOID 09	0.999962297	- 00° 24' 40.13727"	



- NOTES:**
1. Monument set: July 6, 2011
 2. Data Collected: 2-6-12, 2-14-12, 2-28-12