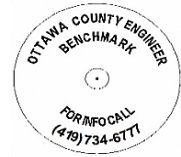




OTTAWA COUNTY BENCHMARK DATA SHEET



SAL 111-1.0

Township	Section	Town	Range	Type of Monument
Salem	8	T6N	R15E	3 1/4" Domed Bronze Disk in Concrete (OCE Spec. BM-1)
Set By	Shot By	Calculated	Calculated By	Published
OCE / OCHD	J. Allen	March 14, 2012	M. J. Wittman, P.S.	March 16, 2012

Location

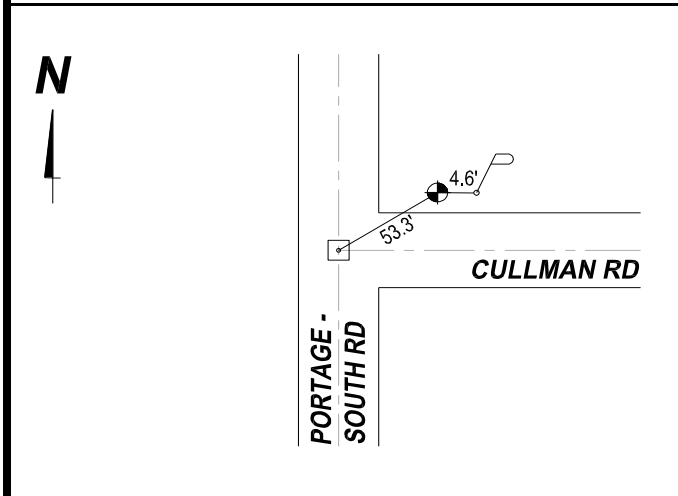
Northeast corner of the intersection of Portage South Rd., T.R. #111 & Cullman Rd., T.R. #107

Vertical Control

Vertical Datum	Method	Elevation (U.S. Survey Feet)
NAVD 88	GPS	588.39

Horizontal Control

Horizontal Datum	Zone	Northing	Easting
NAD 83 CORS 96	OHIO NORTH 3401	663,873.512	1,786,574.182
Method	Latitude	Longitude	
GPS / CORPSCON	41° 29' 13.01202" N	83° 09' 50.44062" W	
Geoid	Scale Factor	Convergence	
GEOID 09	0.999965866	- 00° 26' 10.40072"	



NOTES:

1. Monument set: July 7, 2011
2. Data Collected: 2-6-12, 2-14-12, 3-12-12