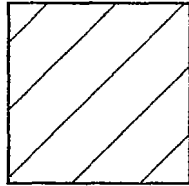
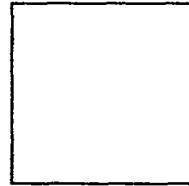
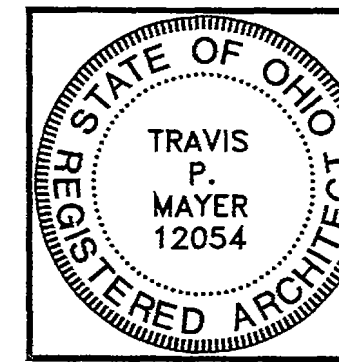


A R E A L E G E N D	
	UNIT
	C E: COMMON ELEMENT

**NOTICE**  
 THIS ARCHITECTURAL AND/OR ENGINEERING DRAWING IS GIVEN IN CONFIDENCE. IDEAS, CONCEPTS, AND DESIGN HEREIN ARE THE PROPERTY OF MAYER ARCHITECTURAL GROUP. NO USE, DISSEMINATION OR REPRODUCTION OF THE INFORMATION CONTAINED HEREIN MAY BE MADE WITHOUT THE EXPRESS WRITTEN CONSENT OF MAYER ARCHITECTURAL GROUP. ALL RIGHTS ARE HEREBY SPECIFICALLY RESERVED.  
 MAYER ARCHITECTURAL GROUP  
 COPYRIGHT YEAR 2018

DATES & REVISIONS:	
REVIEW	6.7.19
ASSOCIATION	8.2.19
FILING	

- TRAVIS P. MAYER -  
 1418 ST. RD. 60  
 VERMILION, OHIO 44089  
 PHONE : 216.789.8292  
 FAX : 440.963.7537  
 mayerarchgrp@adelphia.net



EXPIRES 12.31.19

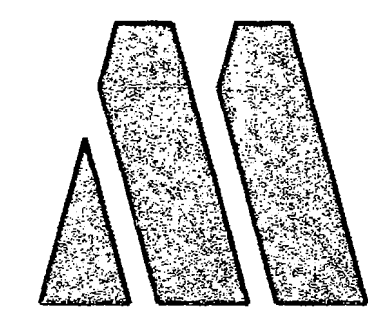
**FIRST FLOOR PLAN**  
**BANYAN COVE GARAGE CONDOMINIUM**  
 459 LANGRAN ROAD  
 PUT-IN-BAY, OHIO 43456

I CERTIFY THAT THIS DRAWING ACCURATELY SHOW EACH BUILDING AS BUILT OR CONSTRUCTED.

*Travis P. Mayer*  
 TRAVIS P. MAYER, ARCHITECT  
 REG. #12054

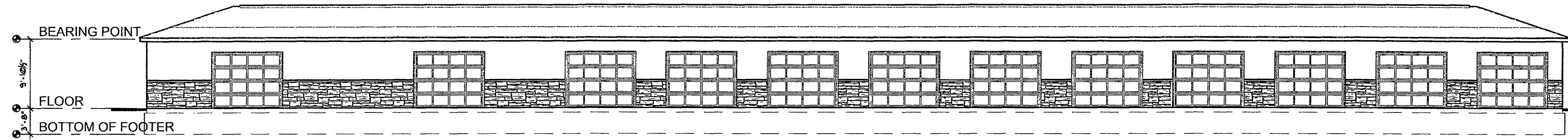
DRAWN BY: HSD  
 CHECKED BY: TSM

SHEET NO.  
**2 OF 3**

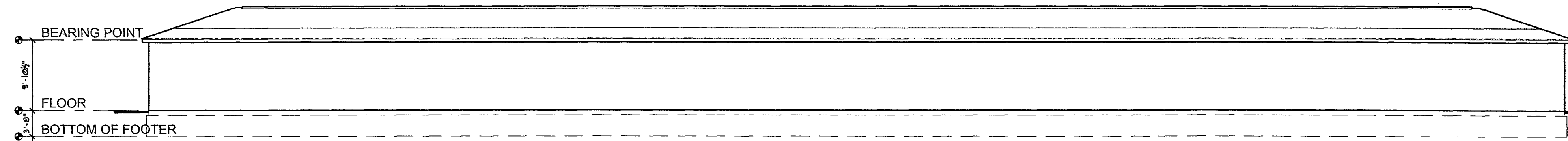


**MAYER ARCHITECTURAL GROUP INC.**

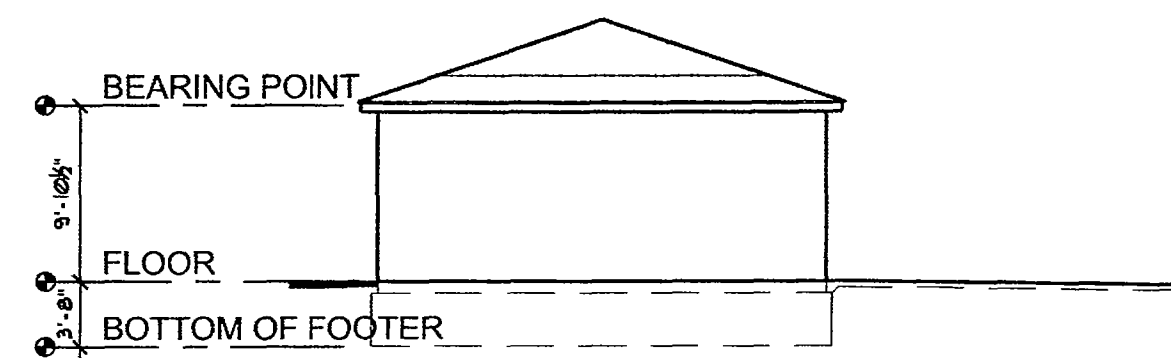
ARCHITECTS • PLANNERS • CONSTRUCTION MANAGERS



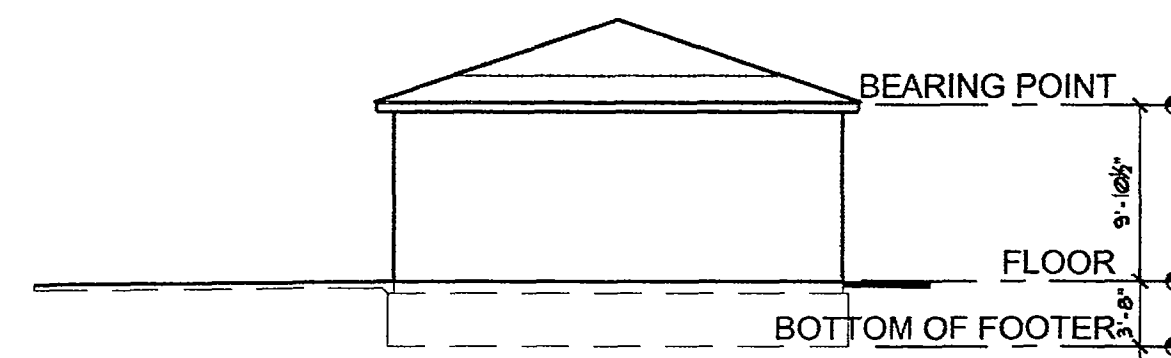
**SOUTH ELEVATION**  
SCALE: 3/32"=1'-0"



**NORTH ELEVATION**  
SCALE: 3/32"=1'-0"



**WEST ELEVATION**  
SCALE: 3/32"=1'-0"



**EAST ELEVATION**  
SCALE: 3/32"=1'-0"

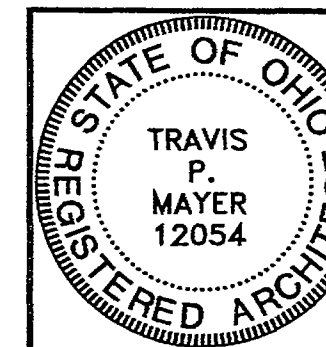
I CERTIFY THAT THIS DRAWING ACCURATELY SHOW EACH BUILDING AS BUILT OR CONSTRUCTED.

*Travis P. Mayer*  
TRAVIS P. MAYER, ARCHITECT  
REG. #12054

**NOTICE**  
THIS ARCHITECTURAL AND/OR ENGINEERING DRAWING IS GIVEN IN CONFIDENCE. IDEAS, CONCEPTS, AND DESIGN HEREIN ARE THE PROPERTY OF MAYER ARCHITECTURAL GROUP. NO USE, DISSEMINATION OR REPRODUCTION OF THE INFORMATION CONTAINED HEREIN MAY BE MADE WITHOUT THE EXPRESS WRITTEN CONSENT OF MAYER ARCHITECTURAL GROUP. ALL RIGHTS ARE HEREBY SPECIFICALLY RESERVED.  
MAYER ARCHITECTURAL GROUP  
COPYRIGHT YEAR 2018

DATES & REVISIONS:	
REVIEW	6.7.19
ASSOCIATION	8.2.19
FILING	

- TRAVIS P. MAYER -  
1418 ST. RD. 60  
VERMILION, OHIO 44089  
PHONE : 216.789.8292  
FAX : 440.963.7537  
mayerarchgrp@adelphia.net



EXPIRES 12.31.19

**BANYAN COVE GARAGE CONDOMINIUM**  
459 LANGRAM ROAD  
PUT-IN-BAY, OHIO 43456

DRAWN BY:	HEB
CHECKED BY:	TYB

SHEET NO.  
**3 OF 3**



ARCHITECTS • PLANNERS • CONSTRUCTION MANAGERS

BANYAN COVE GARAGE CONDOMINIUM

BEC ASSOCIATES  
PROFESSIONAL ENGINEERING AND SURVIVING CONSULTANTS  
110 WEST LARSON ROAD, PORT CLINTON, OHIO 43462  
OFFICE: (419) 886-6660 FAX: (419) 886-2626

3  
3