

OTTAWA COUNTY ENGINEERS OFFICE

REFERENCE NO. 8-6-17-F
E QUARTER POST SECTION 8
PORTAGE TWP.
SHEET 1 OF 1.

ROUTE: C-133 LOCKWOOD RD.

TOWNSHIP: PORTGAE

SECTION: 8

T 6 NR 17 E.

PERSONNEL:

R. NUHFER, P.S.
M. BROUGH
A. WEIRICH, P.S. - BEC
J. GLASS - BEC
D. TORIS, JR. - BEC

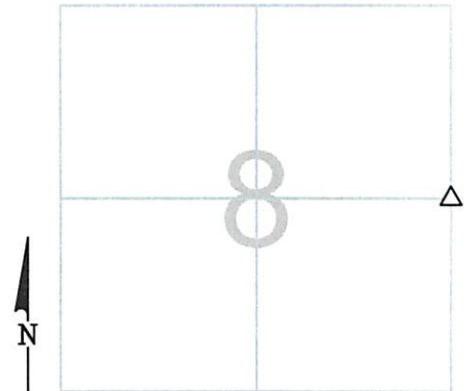
NORTHING:

EASTING:

DATUM:

DATE / WEATHER / TEMP:

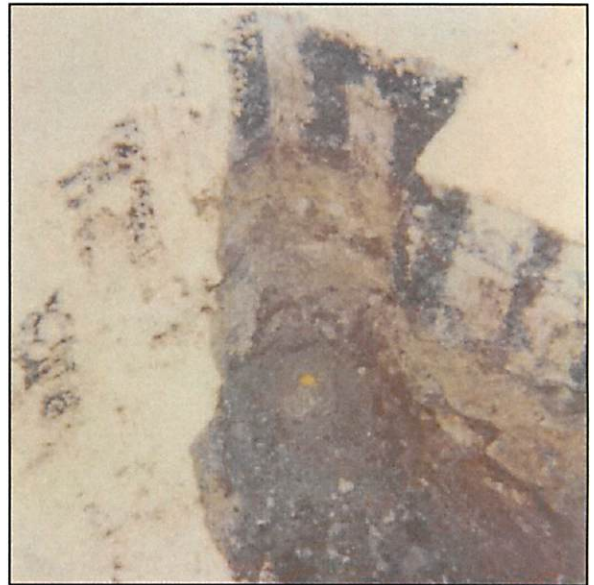
AUGUST 8, 2002
SUNNY
75° F



MONUMENT INFORMATION

MONUMENT TYPE: FD LIMESTONE
ON SURFACE - BELOW: 1.85'
LEFT - CL PAV'T - RIGHT:
RECTANGULAR STONE: 6- $\frac{1}{2}$ " x 6" x 5"

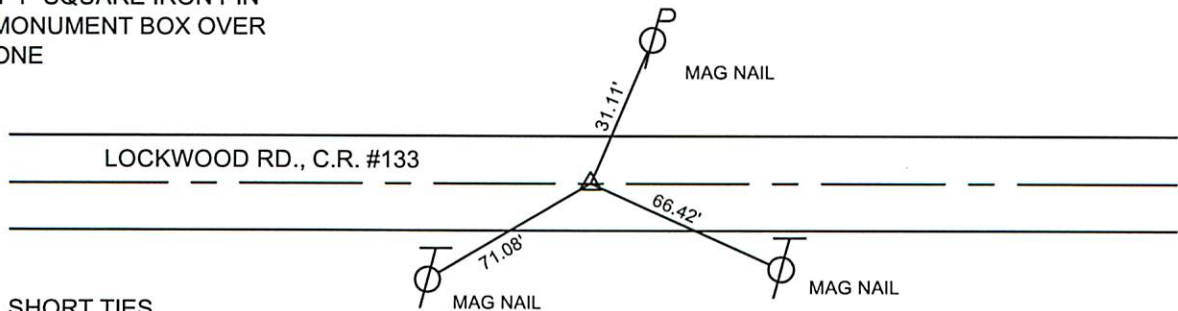
USED DRILL HOLE



MISC. INFORMATION

AUGUST 8, 2002

SET 1" SQUARE IRON PIN
IN MONUMENT BOX OVER
STONE



SHORT TIES

SET MAG NAIL N - 3.00'
SET MAG NAIL E - 3.00'
SET MAG NAIL S - 3.00'