

OTTAWA COUNTY ENGINEERS OFFICE

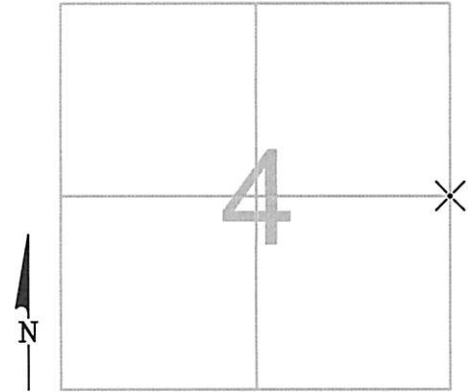
REFERENCE NO. 4-6-17-F
EASST QUARTER POST SEC 4
PORTAGE TWP.
SHEET 1 OF 1.

ROUTE: CR-8 STATE RD
TOWNSHIP: PORTAGE
SECTION: 4
T 6 NR 17 E.

PERSONNEL:
M. WITTMAN, P.S.
J. ALLEN
J. LAUBACHER

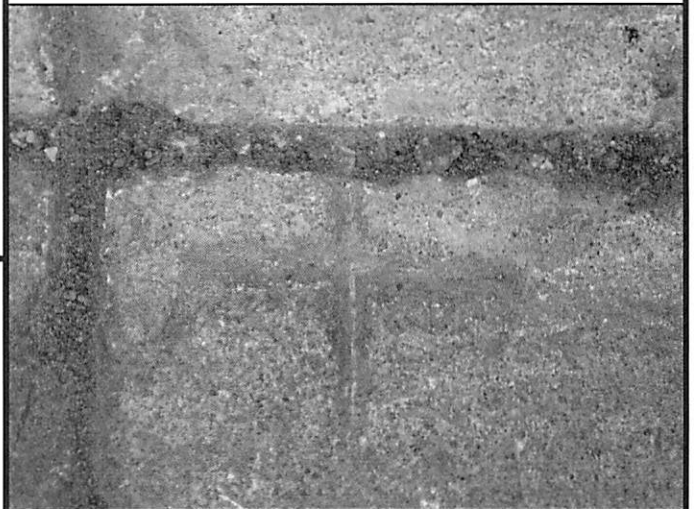
NORTHING:
EASTING:
DATUM:

DATE / WEATHER / TEMP:
AUGUST 8, 2011
SUNNY NW
85° F



MONUMENT INFORMATION

MONUMENT TYPE: FOUND "X" IN CONCRETE
ON SURFACE - BELOW: 0.70'
LEFT - CL PAV'T - RIGHT: 0.60'



MISC. INFORMATION

FD RR SPK ON SURFACE, TIED W/ X-TIES &
DUG FOR "X" IN CONCRETE PER RECORDS

RR SPK WAS 0.56' W & 0.43' S OF FOUND "X"

AUGUST 8, 2011

SET DH & MAG SPK IN CENTER
OF "X" AND PLACED MONUMENT
BOX OVER

