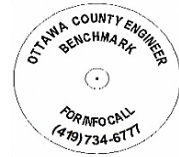




# OTTAWA COUNTY BENCHMARK DATA SHEET



## POR 133-1.0

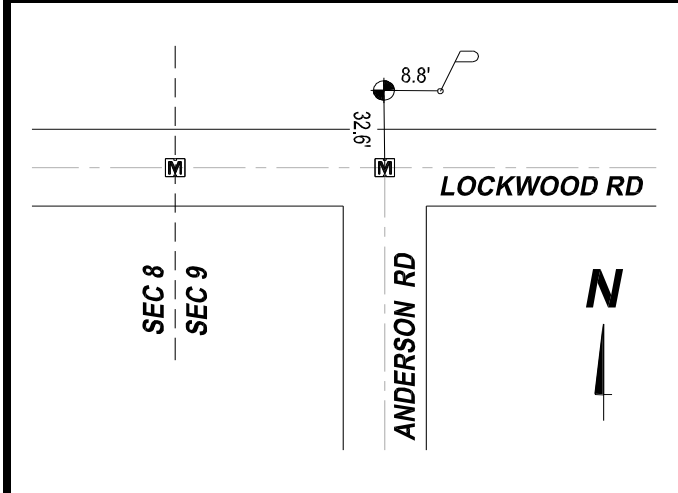
<b>Township</b>	<b>Section</b>	<b>Town</b>	<b>Range</b>	<b>Type of Monument</b>
Portage	9	T6N	R17E	3 1/4" Domed Bronze Disk in Concrete (OCE Spec. BM-1)
<b>Set By</b>	<b>Shot By</b>	<b>Calculated</b>	<b>Calculated By</b>	<b>Published</b>
OCE / OCHD	J. Allen	March 14, 2012	M. J. Wittman, P.S.	March 16, 2012

**Location**

Northwest of the intersection of Lockwood Rd., C.R. #133 & Anderson Rd., T.R. #255

Vertical Control		
<b>Vertical Datum</b>	<b>Method</b>	<b>Elevation (U.S. Survey Feet)</b>
NAVD 88	GPS	575.99

Horizontal Control			
<b>Horizontal Datum</b>	<b>Zone</b>	<b>Northing</b>	<b>Easting</b>
NAD 83 CORS 96	OHIO NORTH 3401	666,060.051	1,855,096.781
<b>Method</b>	<b>Latitude</b>	<b>Longitude</b>	
GPS / CORPSCON	41° 29' 38.79875" N	82° 54' 50.23198" W	
<b>Geoid</b>	<b>Scale Factor</b>	<b>Convergence</b>	
GEOID 09	0.999966788	- 00° 16' 19.00837"	



**NOTES:**

1. Monument set: August 23, 2011
2. Data Collected: 2-6-12, 2-14-12, 3-8-12