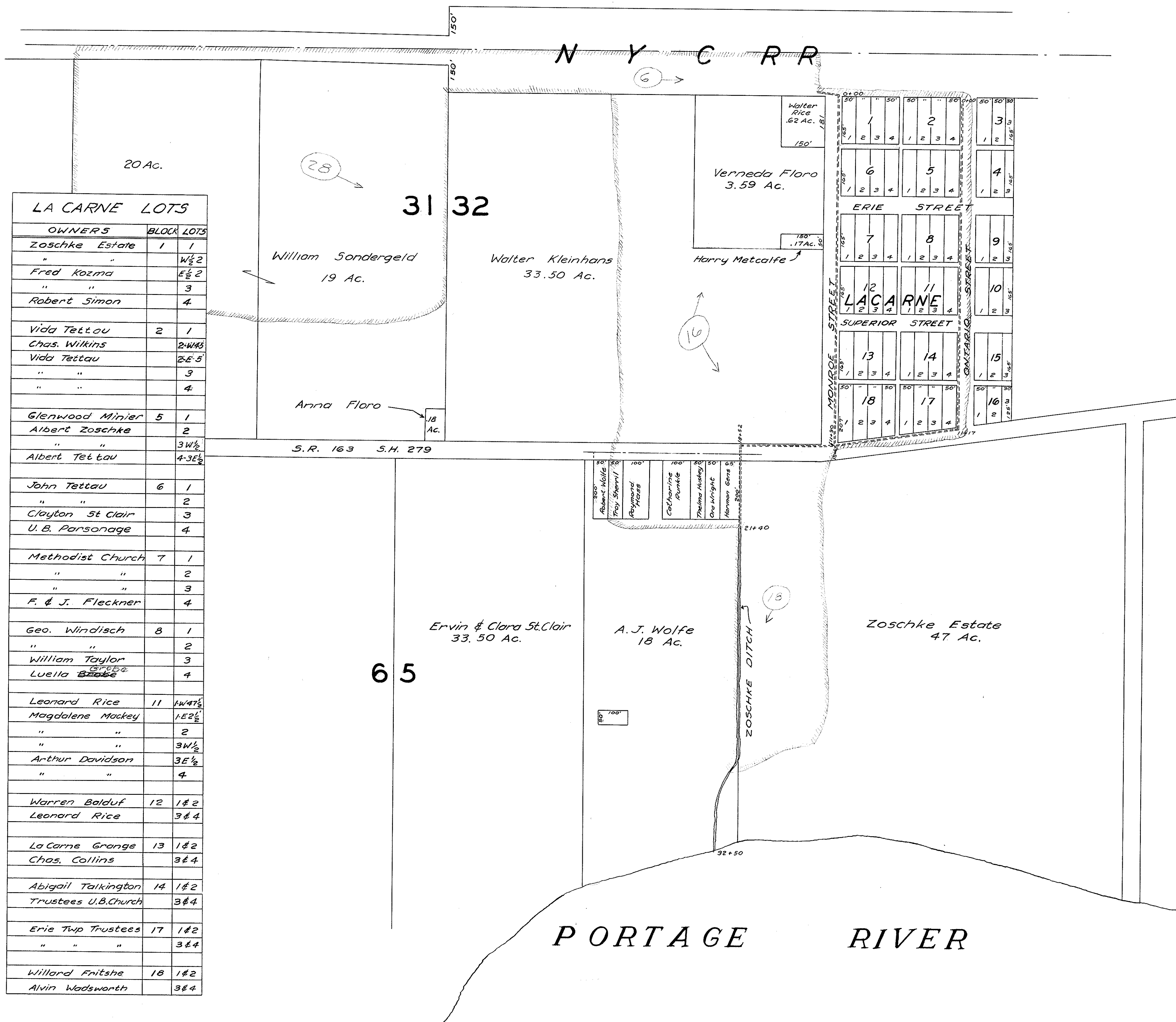


**ZOSCHKE DITCH**  
 WALTER RICE PETITION ERIE TOWNSHIP  
 OTTAWA COUNTY OHIO  
 1950

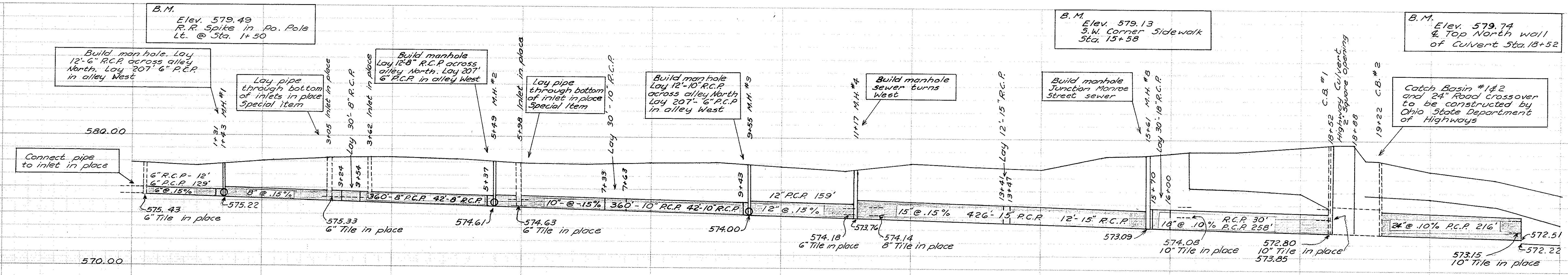
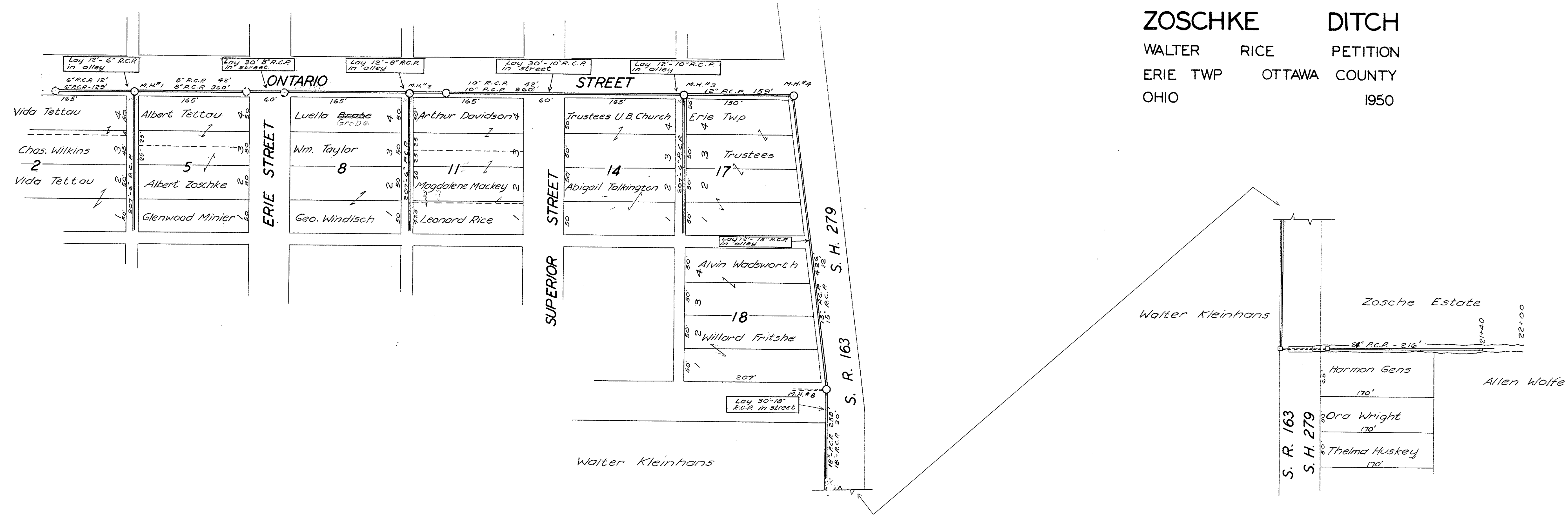
1  
5



LA CARNE LOTS		
OWNERS	BLOCK	LOTS
Zoschke Estate	1	1
"		W 1/2 2
Fred Kozma		E 1/2 2
"		3
Robert Simon		4
Vida Tettau	2	1
Chas. Wilkins		2-W 1/2 3
Vida Tettau		2-E 1/2 5
"		3
"		4
Glenwood Minier	5	1
Albert Zoschke		2
"		3W 1/2
Albert Tettau		4-3E 1/2
John Tettau	6	1
"		2
Clayton St Clair		3
U.B. Parsonage		4
Methodist Church	7	1
"		2
"		3
F. & J. Fleckner		4
Geo. Windisch	8	1
"		2
William Taylor		3
Lueila <del>Brake</del>		4
Leonard Rice	11	1W 1/2 1
Magdalene Mackey		1E 1/2 1
"		2
"		3W 1/2
Arthur Davidson		3E 1/2
"		4
Warren Baldof	12	1# 2
Leonard Rice		3# 4
La Carne Grange	13	1# 2
Chas. Collins		3# 4
Abigail Talkington	14	1# 2
Trustees U.B. Church		3# 4
Erie Twp Trustees	17	1# 2
"		3# 4
Willard Fritshe	18	1# 2
Alvin Wadsworth		3# 4

SCALE 1" = 200'

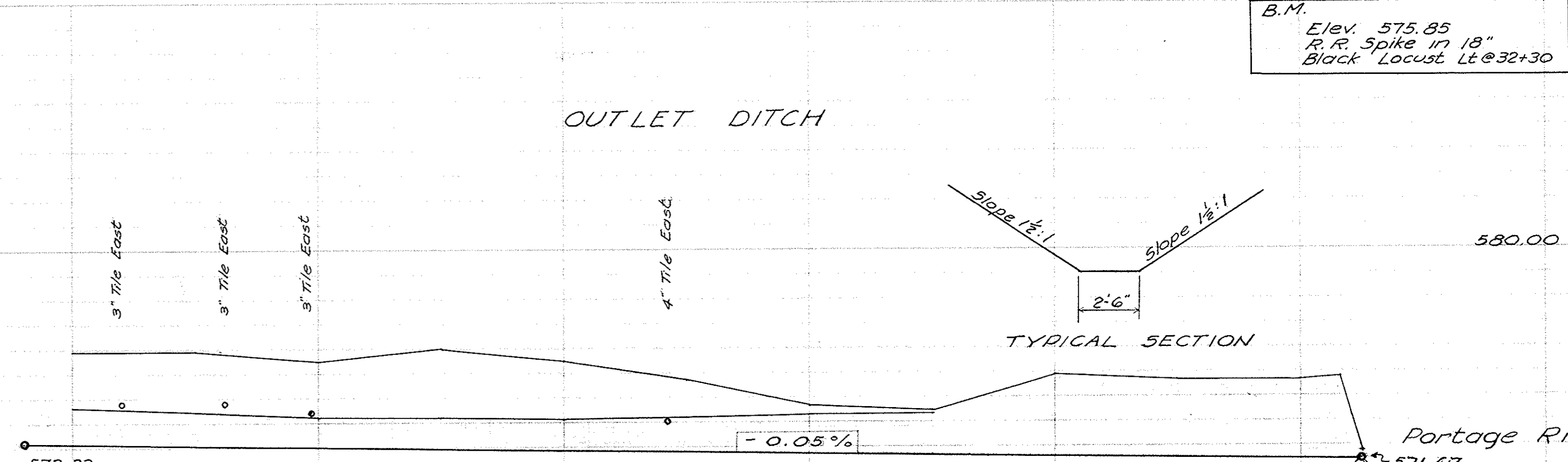
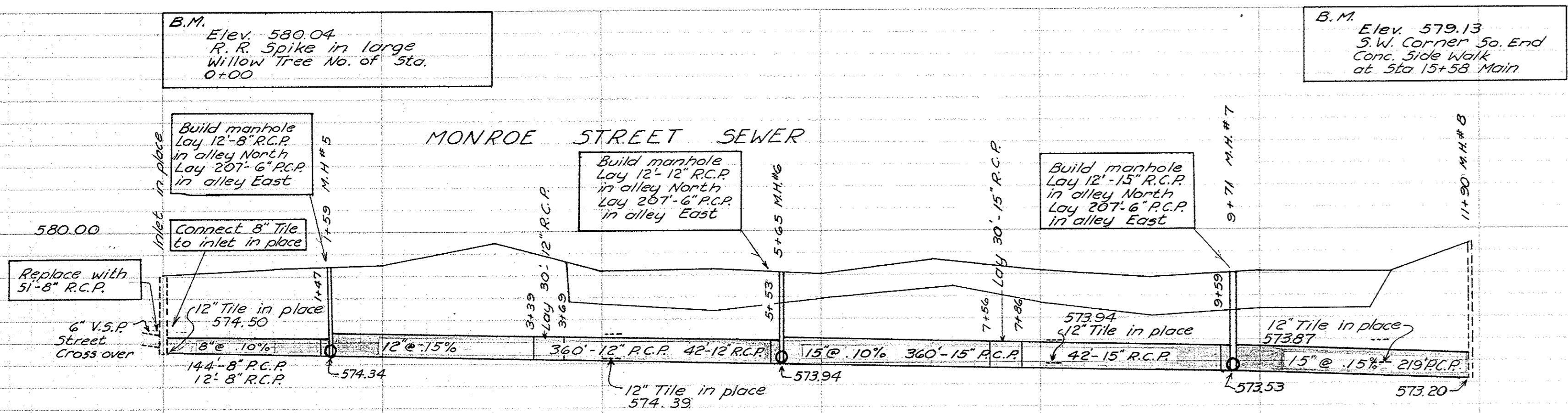
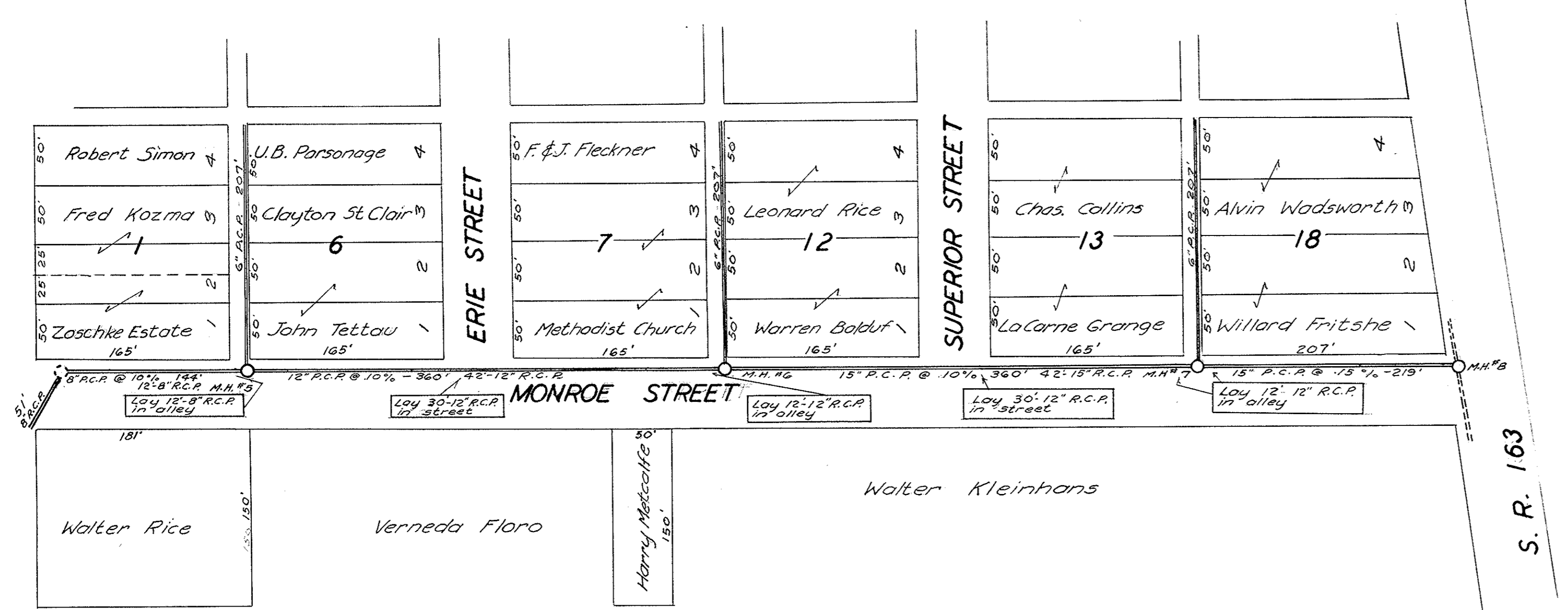
**ZOSCHKE DITCH**  
 WALTER RICE PETITION  
 ERIE TWP OTTAWA COUNTY  
 OHIO 1950



Note:  
 Land tile in place to be replaced with plain and reinforced concrete pipe as shown, joints to be sealed with concrete where ever roots are encountered, also within 25' of all trees. Contractor shall connect all side drainage in place at time of construction, to main pipe. Cost included in unit price of laying main pipe.

Note:  
 Manholes to be 2' square inside measurement, concrete or concrete block construction with removable 4" reinforced concrete slab top. See sheet # 5.  
 M.H. # 8 shall have standard heavy cast iron manhole top and ring. Top & frame shall conform to I-8 M.H. #1, Ohio State Dept. of Highways. Manhole construction to conform with section on sheet # 5.

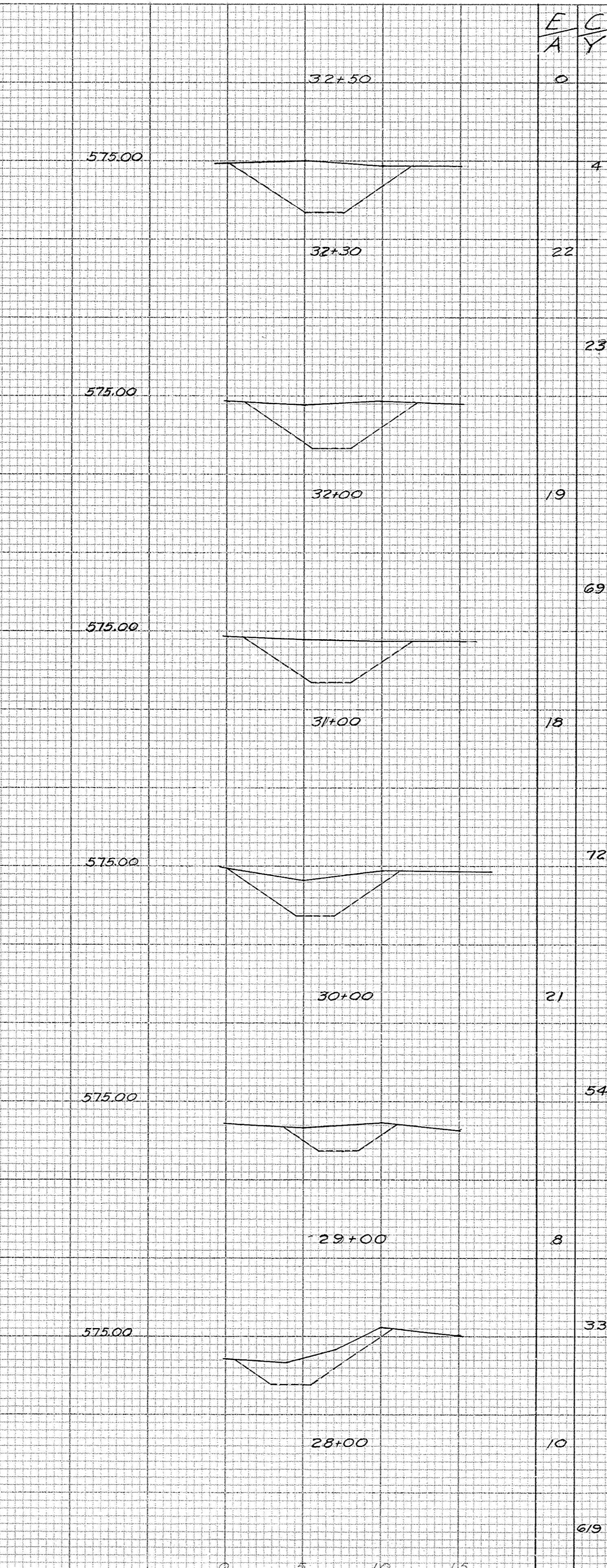
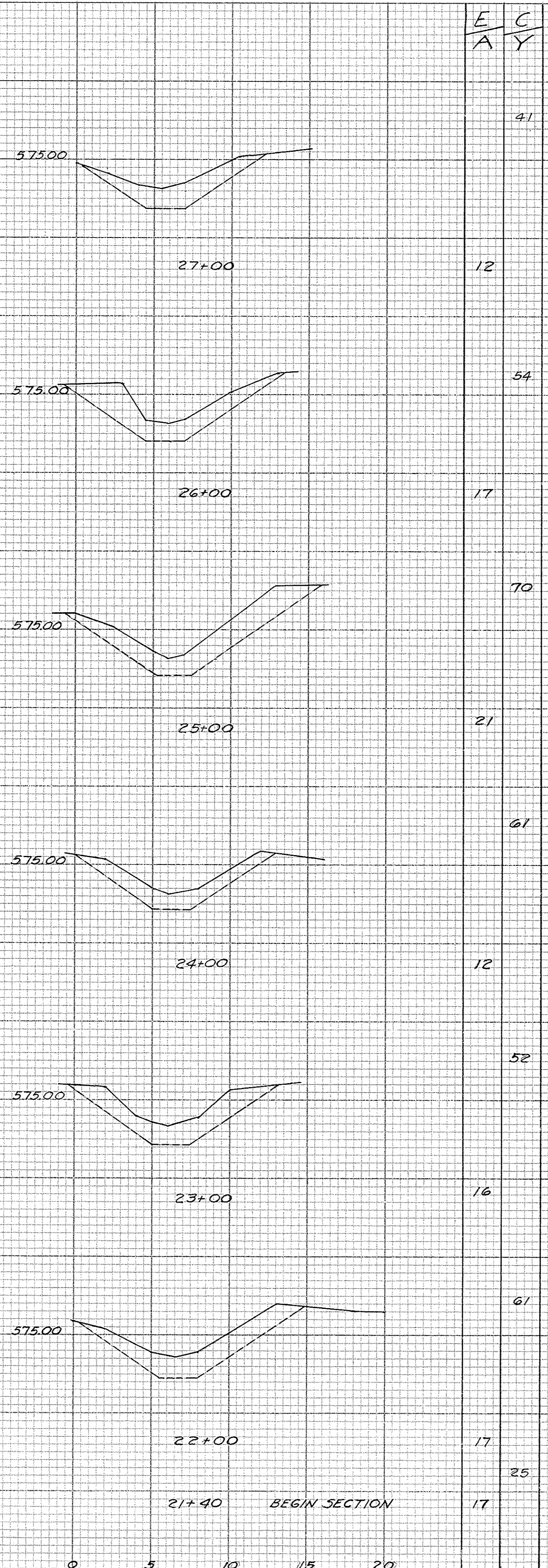
Invert Elevation	575.43	575.33	575.22	575.01	574.61	574.63	574.00	574.18	574.14	573.76	573.09	574.08	572.80	573.15	572.22
Cut from Hub	2.39	2.06	3.32	3.50	3.82	3.30	3.44	3.77	4.03	3.82	3.43	6.08	6.10	6.61	6.68
Station	0+00	1	2	3	4	5	6	7	8	9	10	11	12	13	14



Station	Invert Elevation	Cut from Hub	Cubic Yards	Top Width	Bottom Width	Cut From Hub
0	574.30	3.34	25	15.0	2 1/2	3.68
1	574.40	3.99	61	13.6	2 1/2	3.78
2	574.30	4.17	52	12.7	2 1/2	3.45
3	574.30	5.22	61	16.5	2 1/2	3.95
4	574.10	4.07	70	14.4	2 1/2	3.62
5	574.00	4.22	54	12.2	2 1/2	2.79
6	573.90	4.15	41	10.0	2 1/2	1.71
7	573.90	4.81	33	7.2	2 1/2	1.68
8	573.70	4.49	54	11.3	2 1/2	3.12
9	573.60	4.25	72	11.0	2 1/2	2.91
10	573.55	4.52	69	10.7	2 1/2	2.98
11	573.34	4.70	23	12.0	2 1/2	3.12
11+90	573.30	5.73	4	12.0	2 1/2	3.12
21+40			619			
22						
23						
24						
25						
26						
27						
28						
29						
30						
31						
32						
32+00						
32+50						
TOTAL			619			

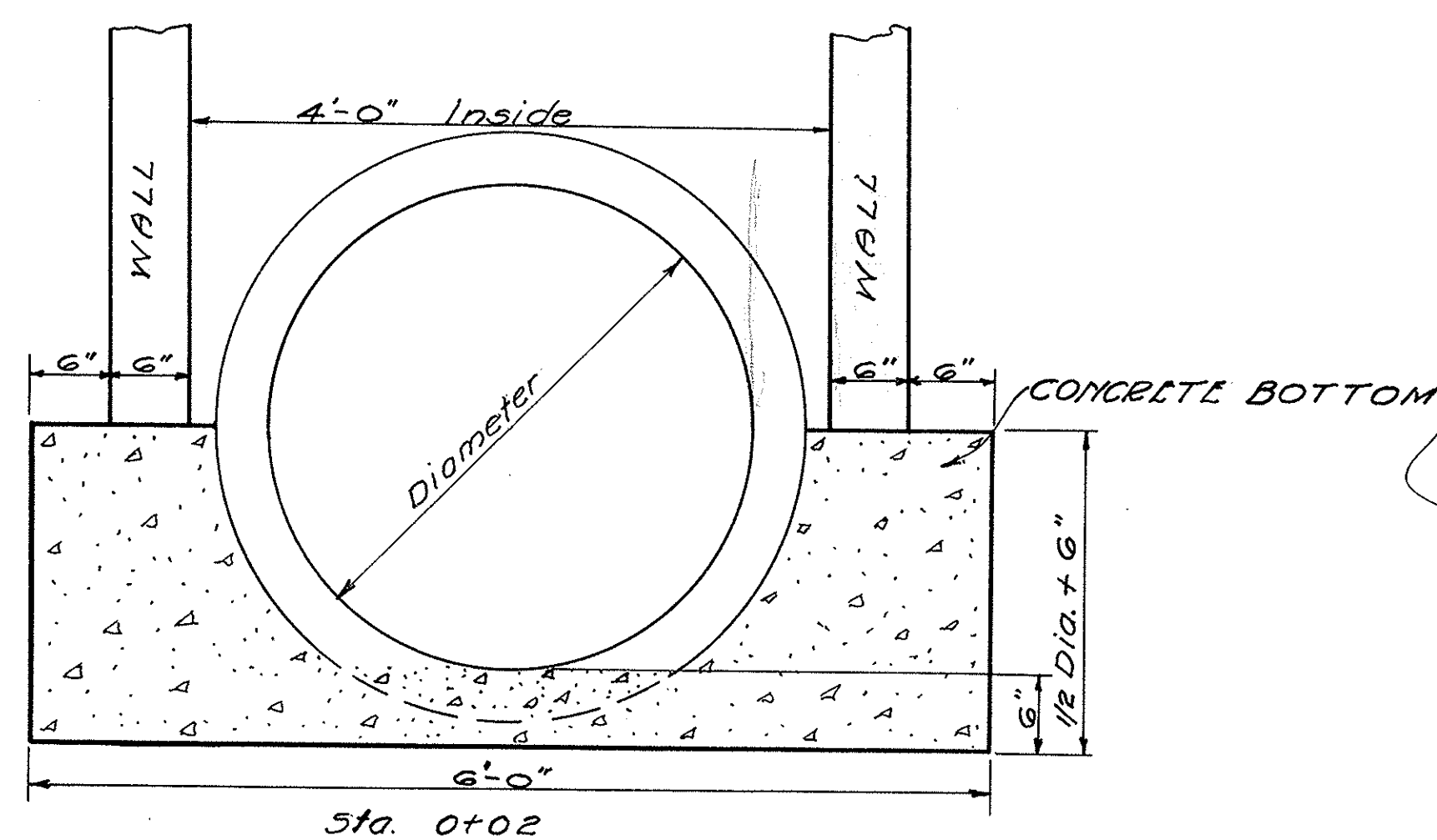
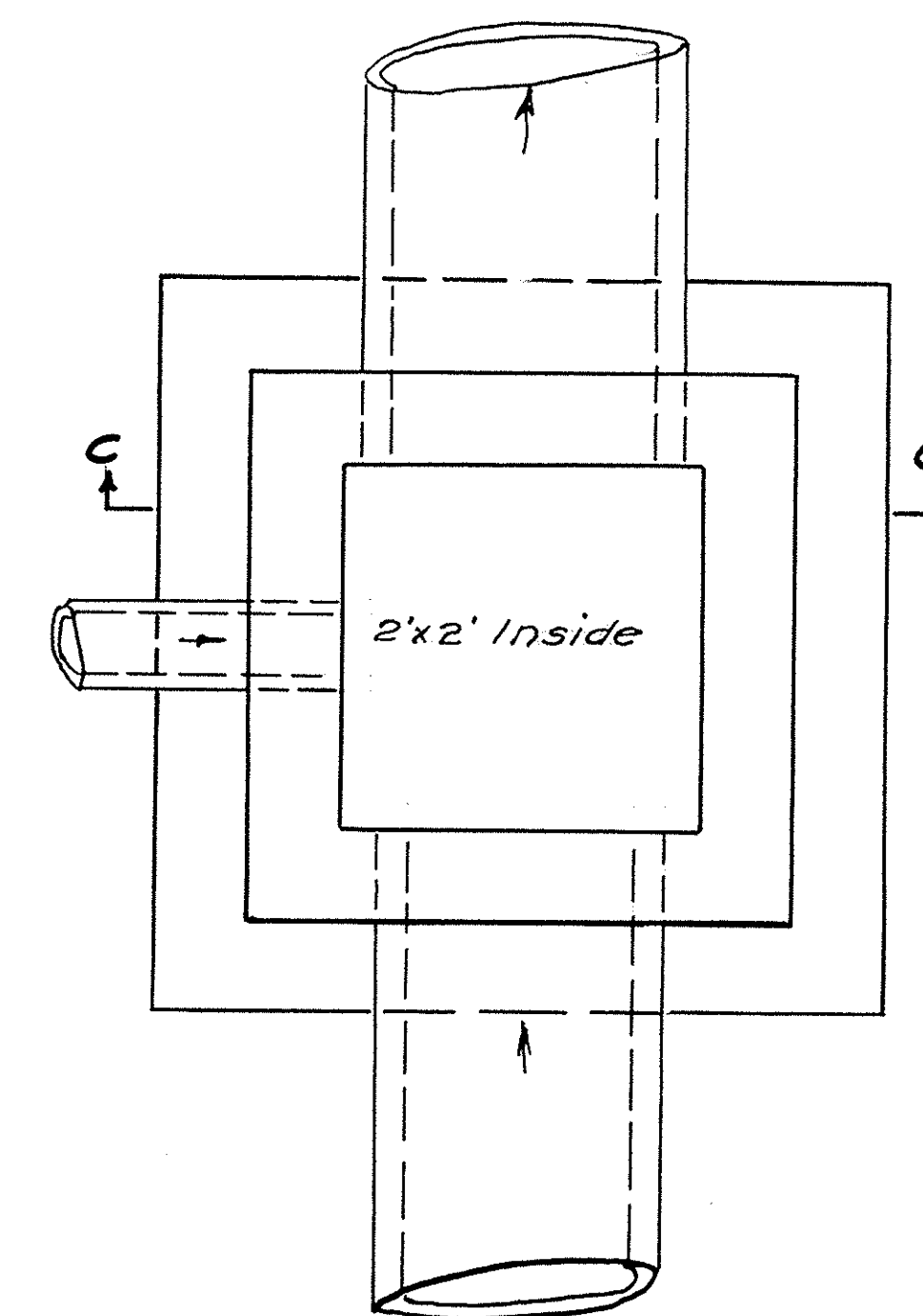
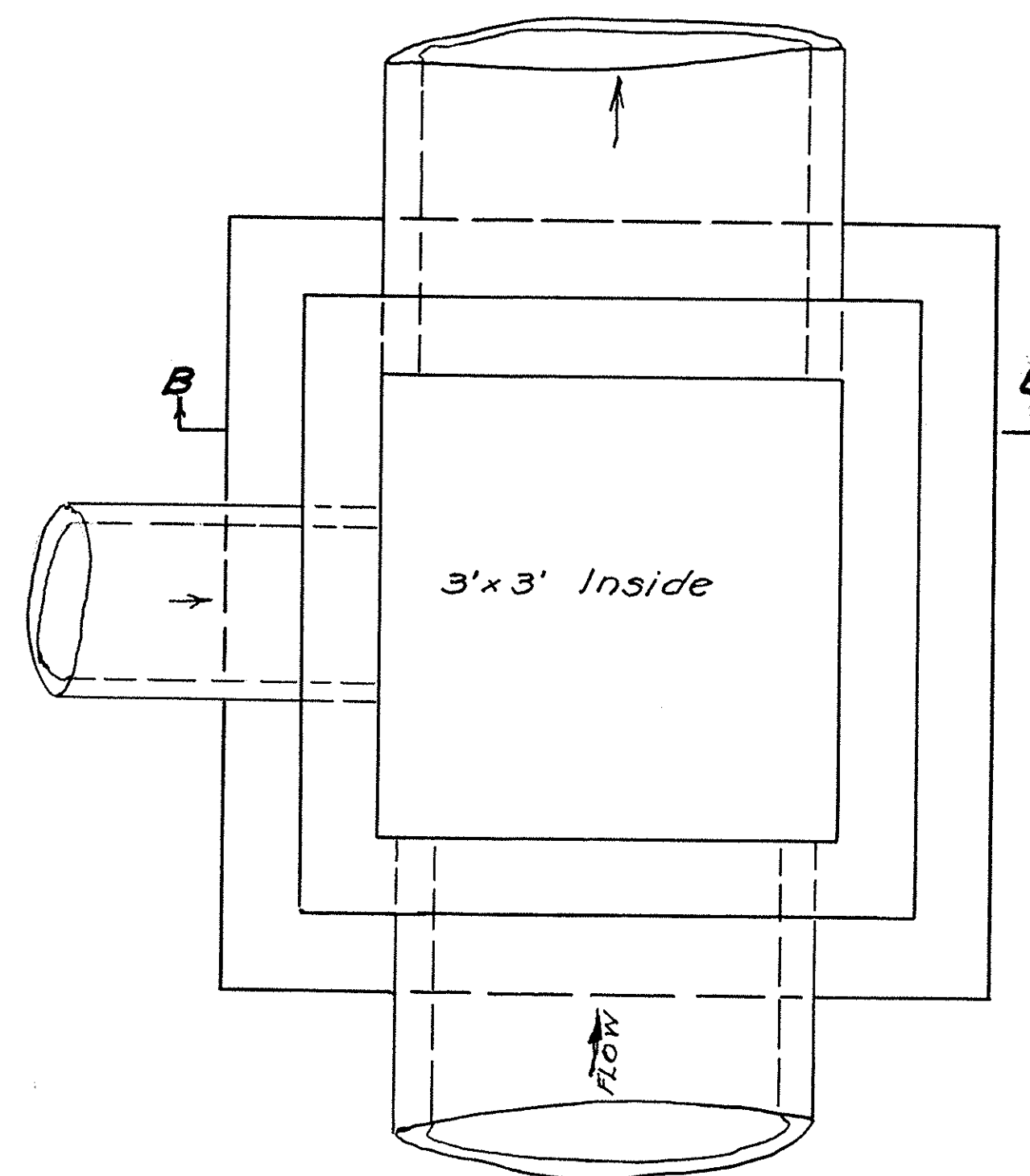
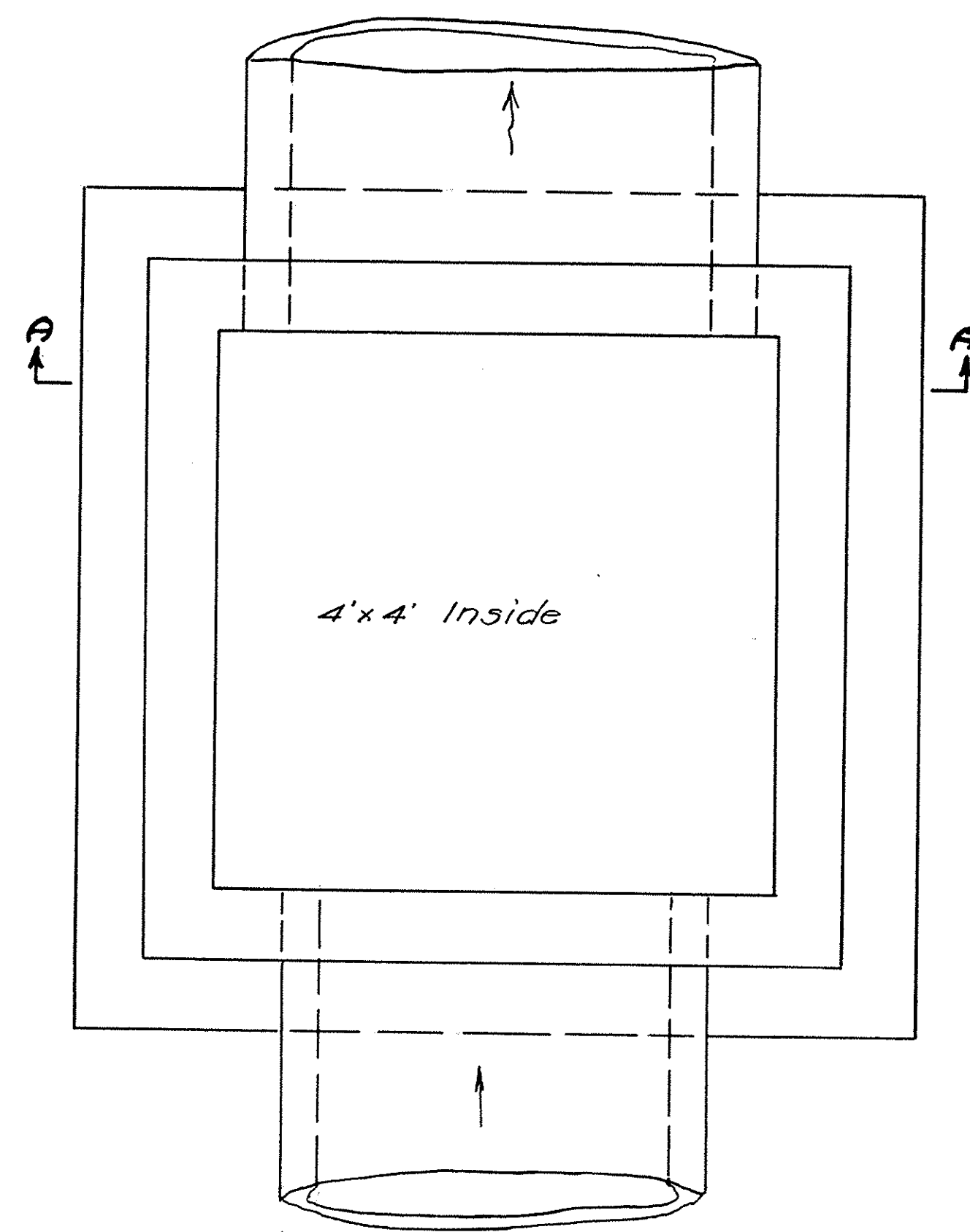
SEE STANDARD SPECIFICATIONS FOR CONSTRUCTION OF SEWER LINES AND MANHOLES

SEE STANDARD SPECIFICATIONS FOR CONSTRUCTION OF SEWER LINES AND MANHOLES

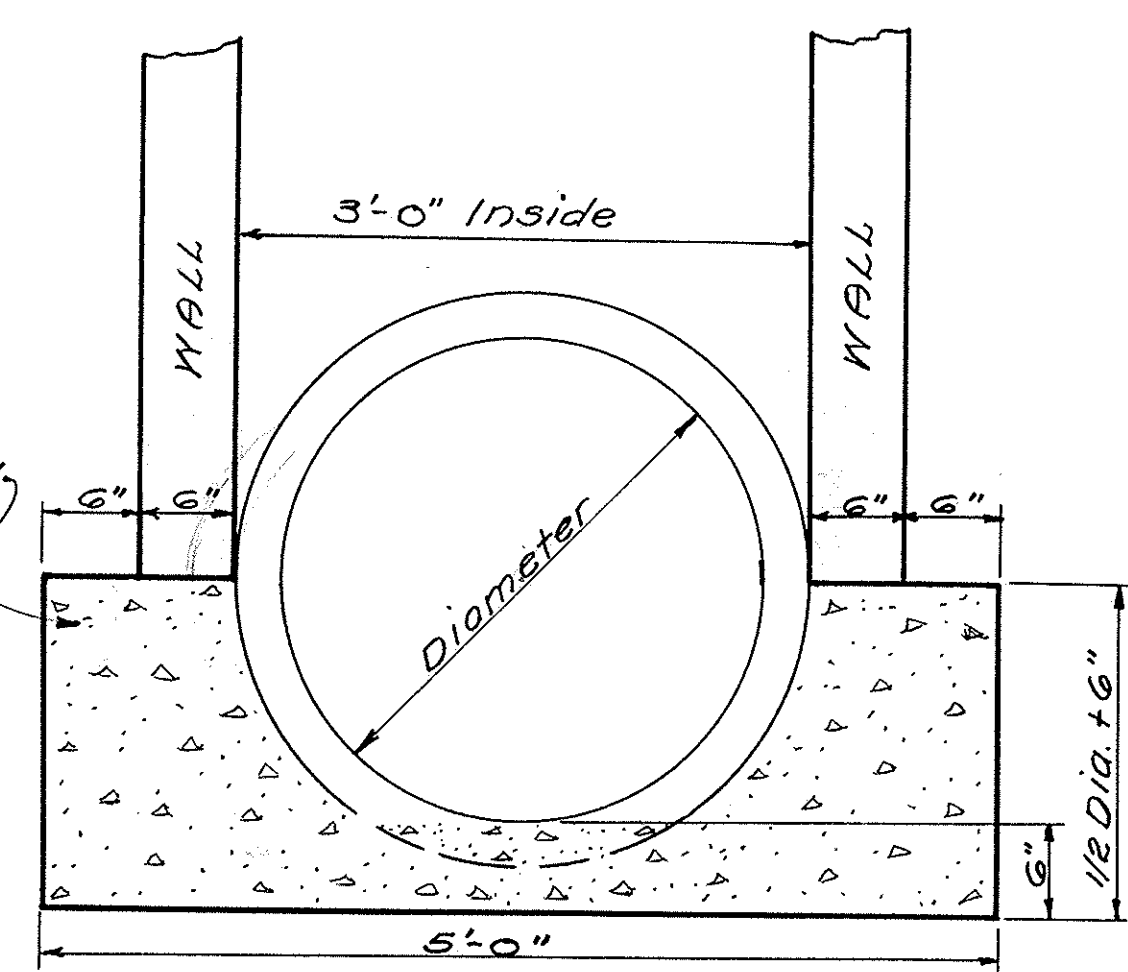


Station	Elevation (ft)	Cross-section Area (sq. ft)
21+40	575.00	17
22+00	575.00	61
23+00	575.00	16
24+00	575.00	12
25+00	575.00	21
26+00	575.00	17
27+00	575.00	12
28+00	575.00	10
29+00	575.00	8
30+00	575.00	21
31+00	575.00	18
32+00	575.00	19
32+30	575.00	22
32+50	575.00	4
<b>TOTAL</b>		<b>619</b>

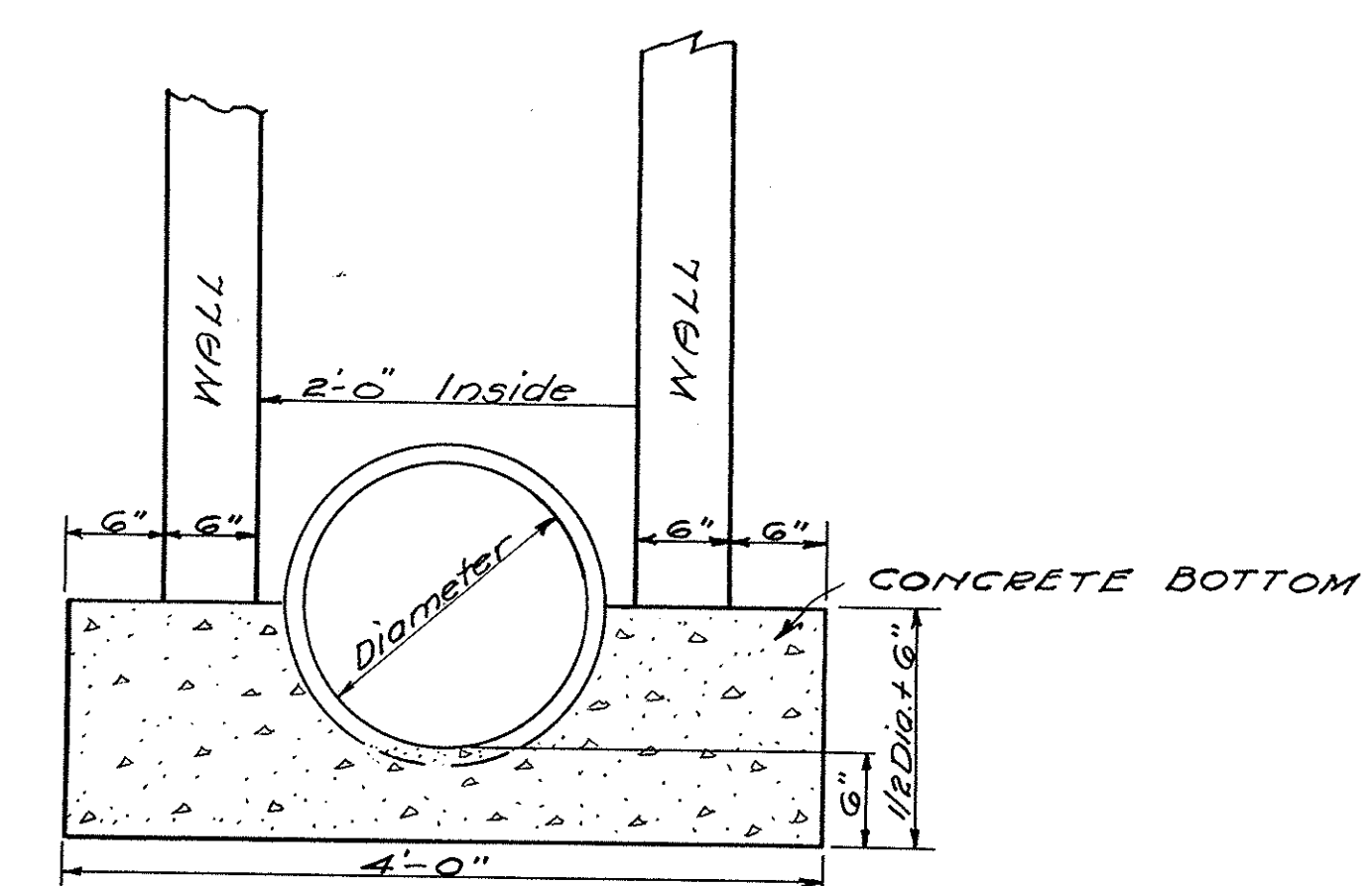
TOTAL CU. YDS.



SECTION A-A



SECTION B-B



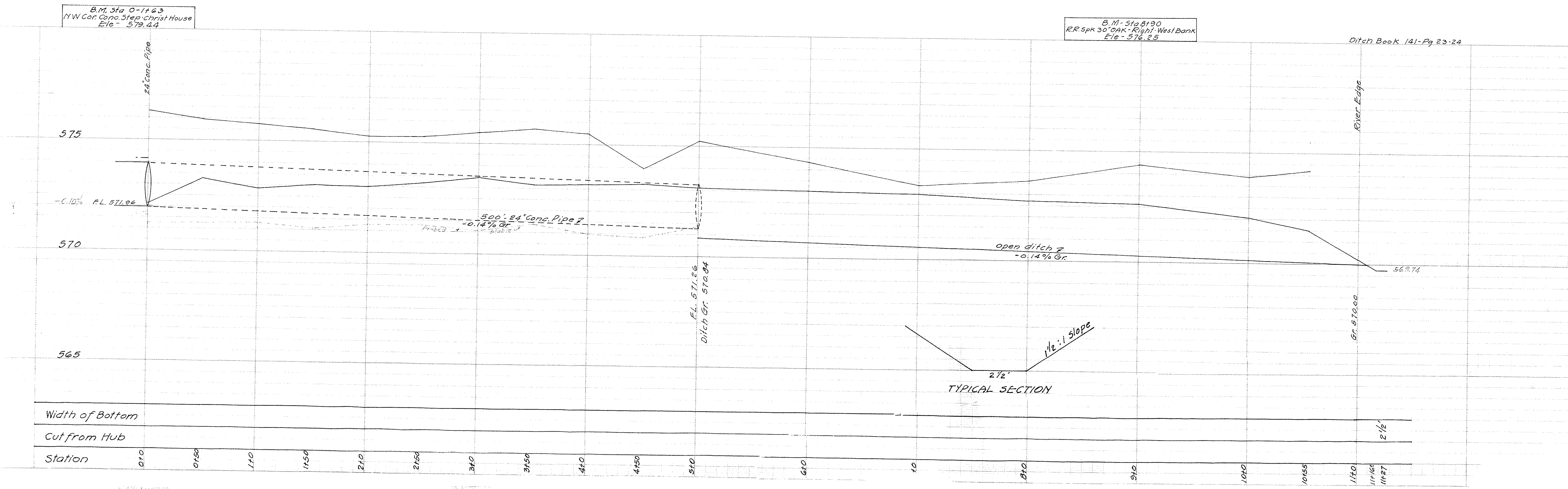
SECTION C-C

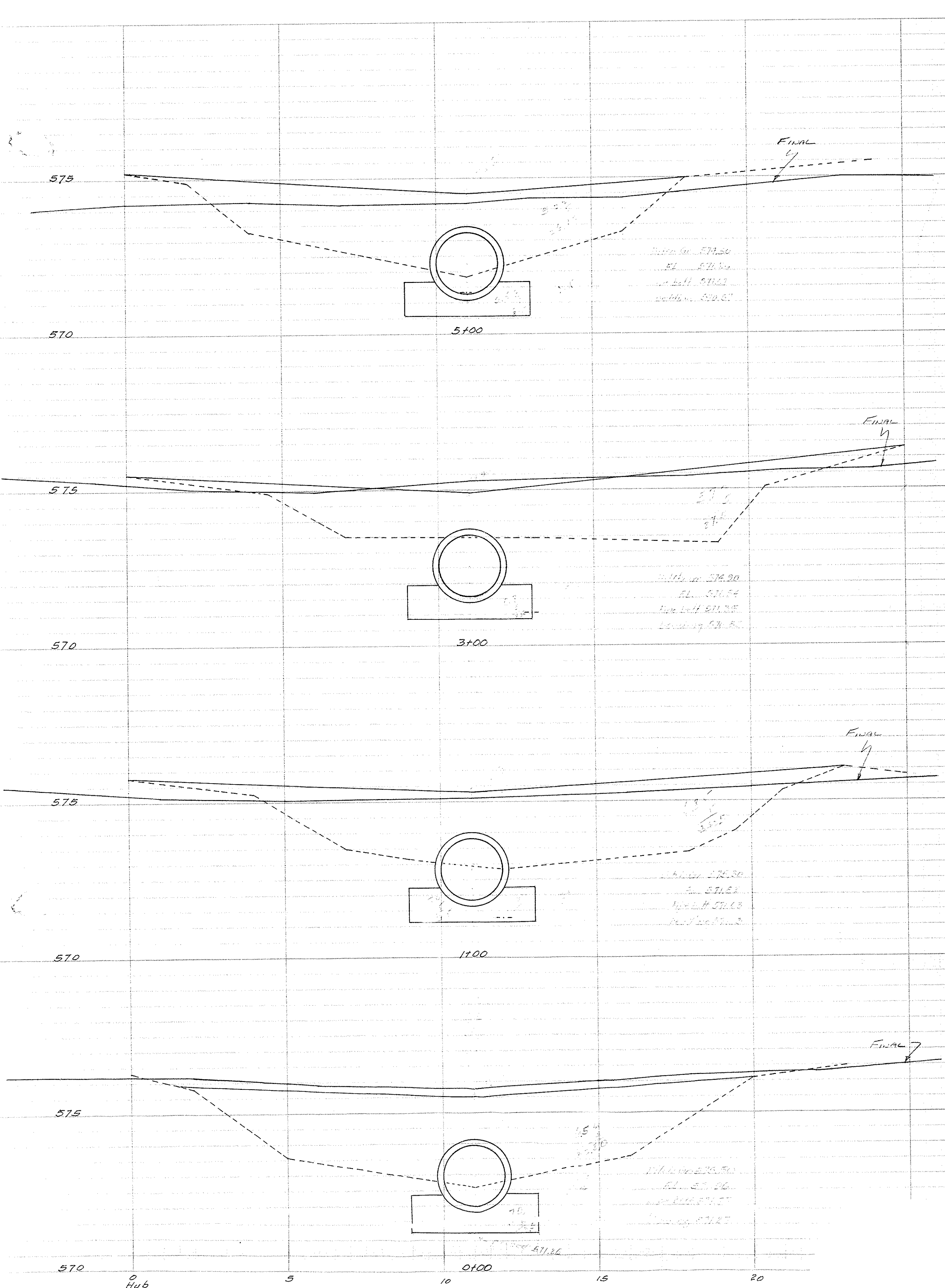
USE THIS MANHOLE FOR ZOSCHKE DITCH  
 NOTE: SEE SHEET FOR TOP & GRATING  
 CONCRETE BOTTOM SHALL BE CLASS "E" CONCRETE 1:6 1/2 MIX.

# ZOSCHKE DITCH

## SEC. 5-31-32 ERIE TOWNSHIP

### 1964



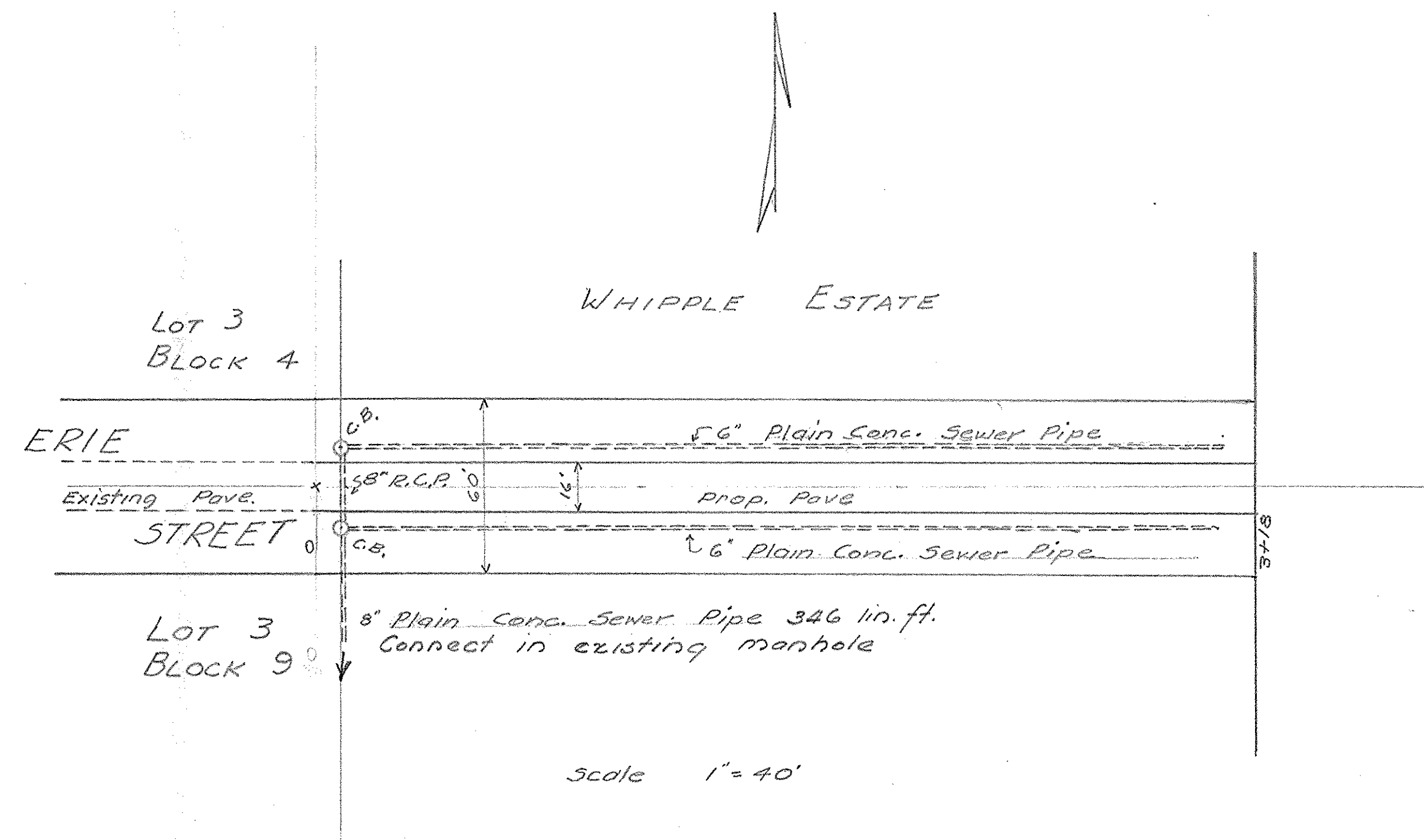


FILL  
End Area Cu Yds

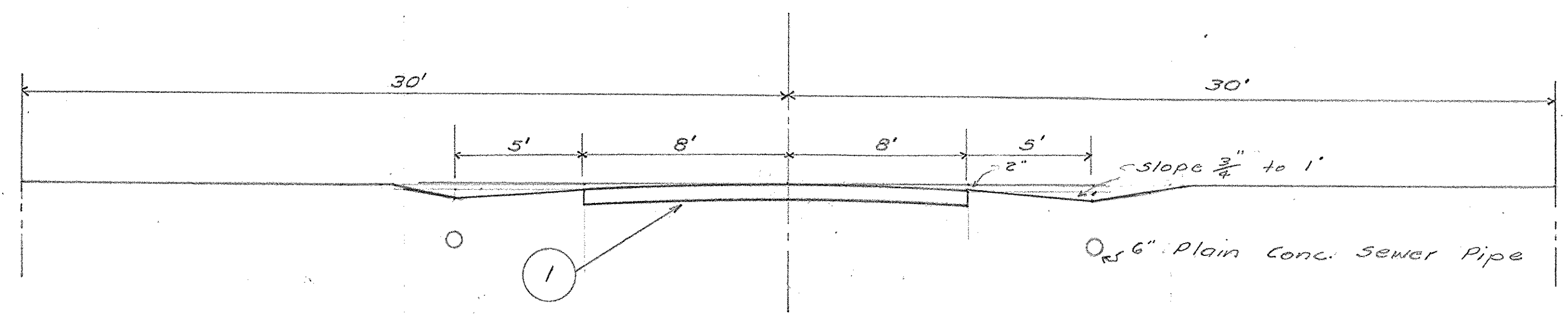
bedding  
End Area Cu Yds

FINAL QUANTITIES

CUT		FILL	
END AREA	Cu Yds	END AREA	Cu Yds
5.1		18.5	
	474		167.0
7.7		26.6	
	50.7		196.7
6.0		26.5	
	20.6		118.3
5.1		37.4	
	118.7		482.0
<b>Total</b>	<b>550.6</b>	<b>Total</b>	<b>64.8</b>



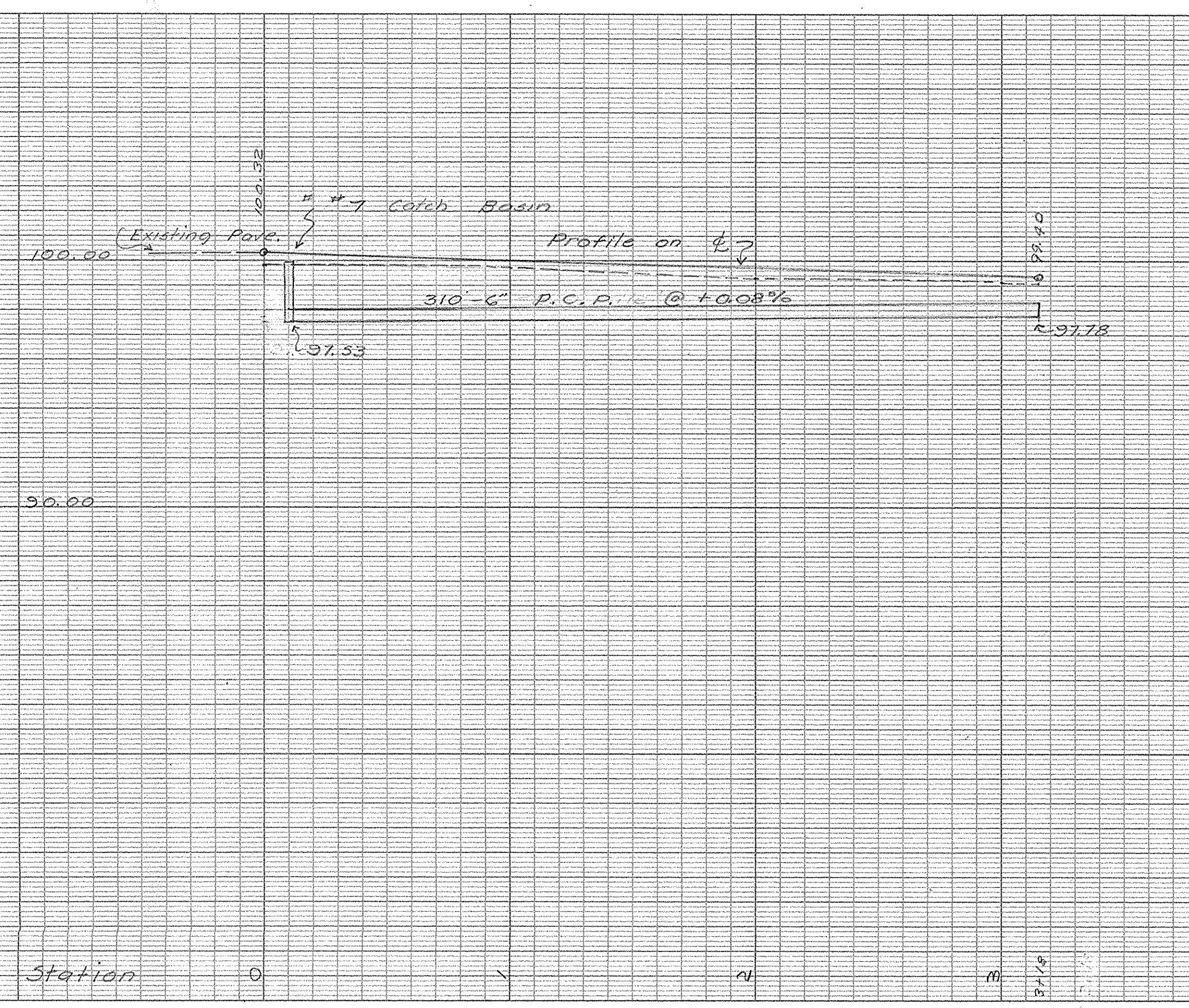
Scale 1" = 40'



NOTE:  
The standard specifications of the State of Ohio Dept. of Highways will govern this project unless otherwise noted or excepted

TYPICAL SECTION  
1/4" = 1'

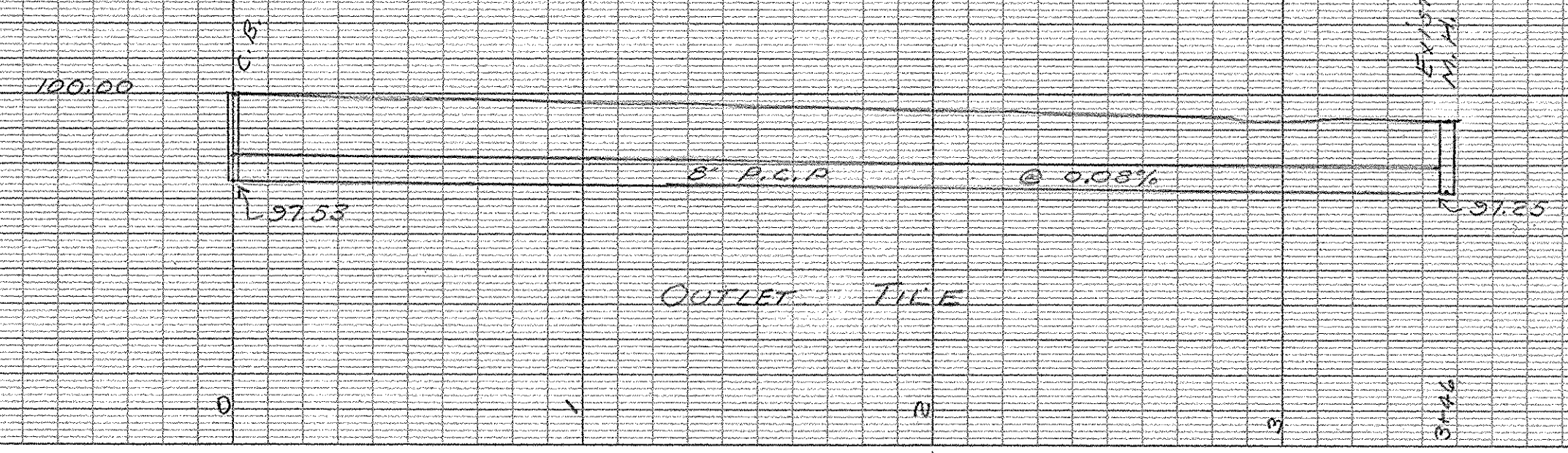
1 B-20 6" Water bound Mac. Base - 566 sq. YD.



B.M. Elev. 100.00 (Assumed)  
Top Center Cone Inlet  
S.W. Cor. Erie & Ontario

SUMMARY

E-1	Excavation	77 CU. YD.
B-20	#1 1/2 Stone W.B. Mac. Base	147 TONS.
B-20	#7 Stone W.B. Mac. Base	48 TONS.
I-3	6" Reinforced Conc. Pipe	620 LIN. FT.
I-3	8" Reinforced Conc. Pipe	24 LIN. FT.
I-3	8" Plain Conc. Sewer Pipe	346 LIN. FT.
I-2	#7 Standard Catch Basin	2 EA.



OFFICE OF DELOS NISSEN  
OTTAWA COUNTY ENGINEER  
EXTENSION OF ERIE STREET, LACARNE, OHIO  
FOR ERIE TOWNSHIP TRUSTEES  
JULY 1954 SCALES AS SHOWN