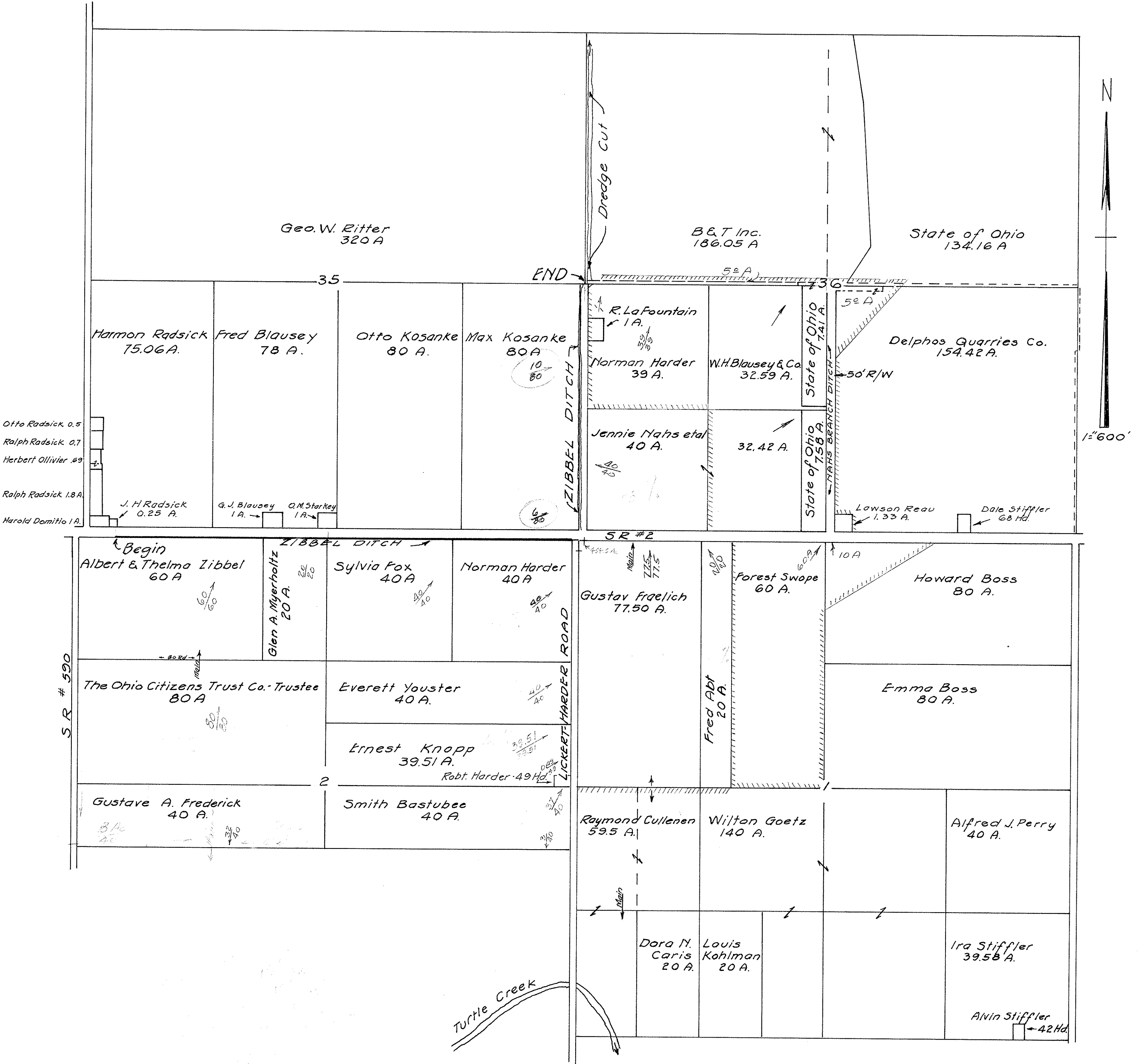
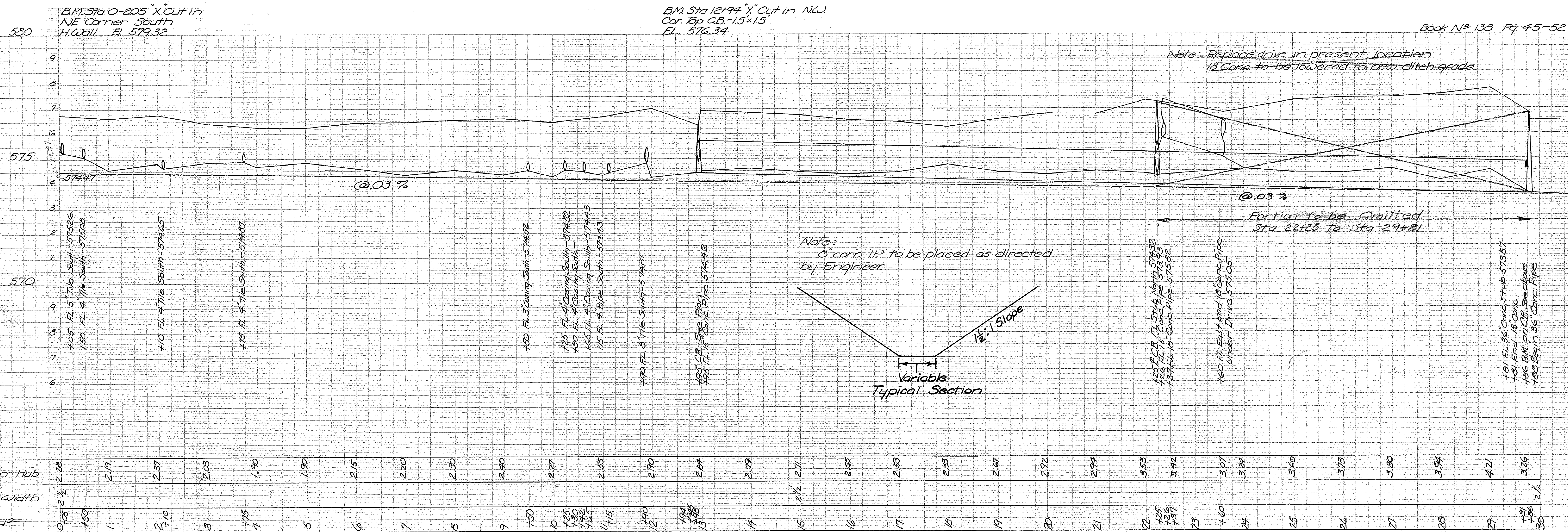


ZIBBEL DITCH BENTON TOWNSHIP 1960

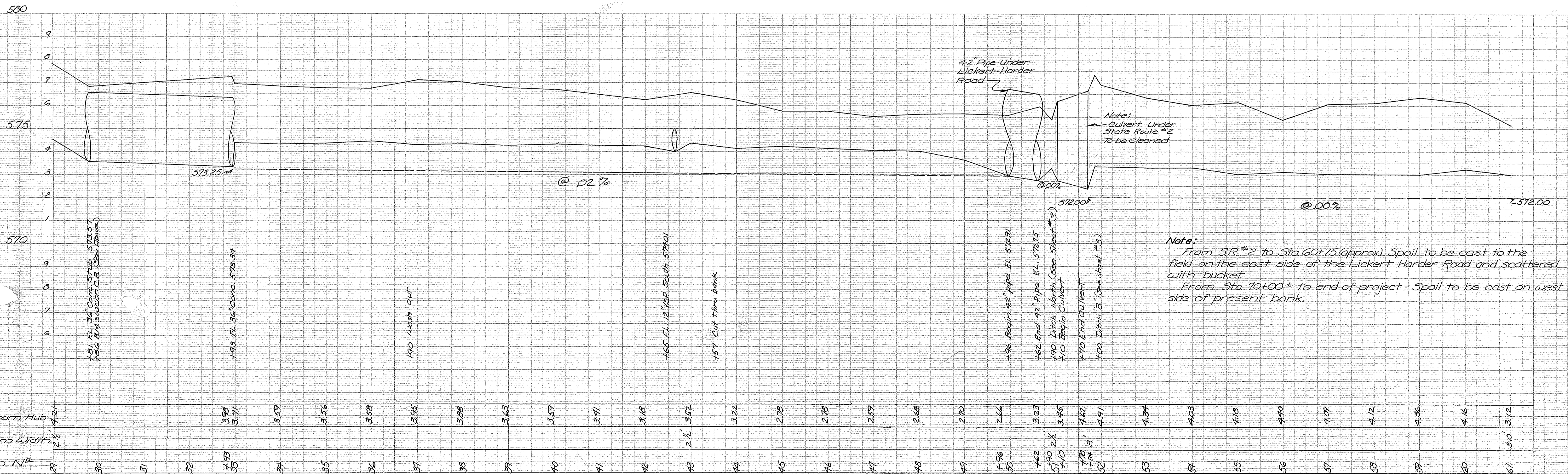


ZIBBEL DITCH BENTON TWP. SEC. 1, 2, 35, 36 OTTAWA COUNTY 1960

Book No 136 Pg 45-52

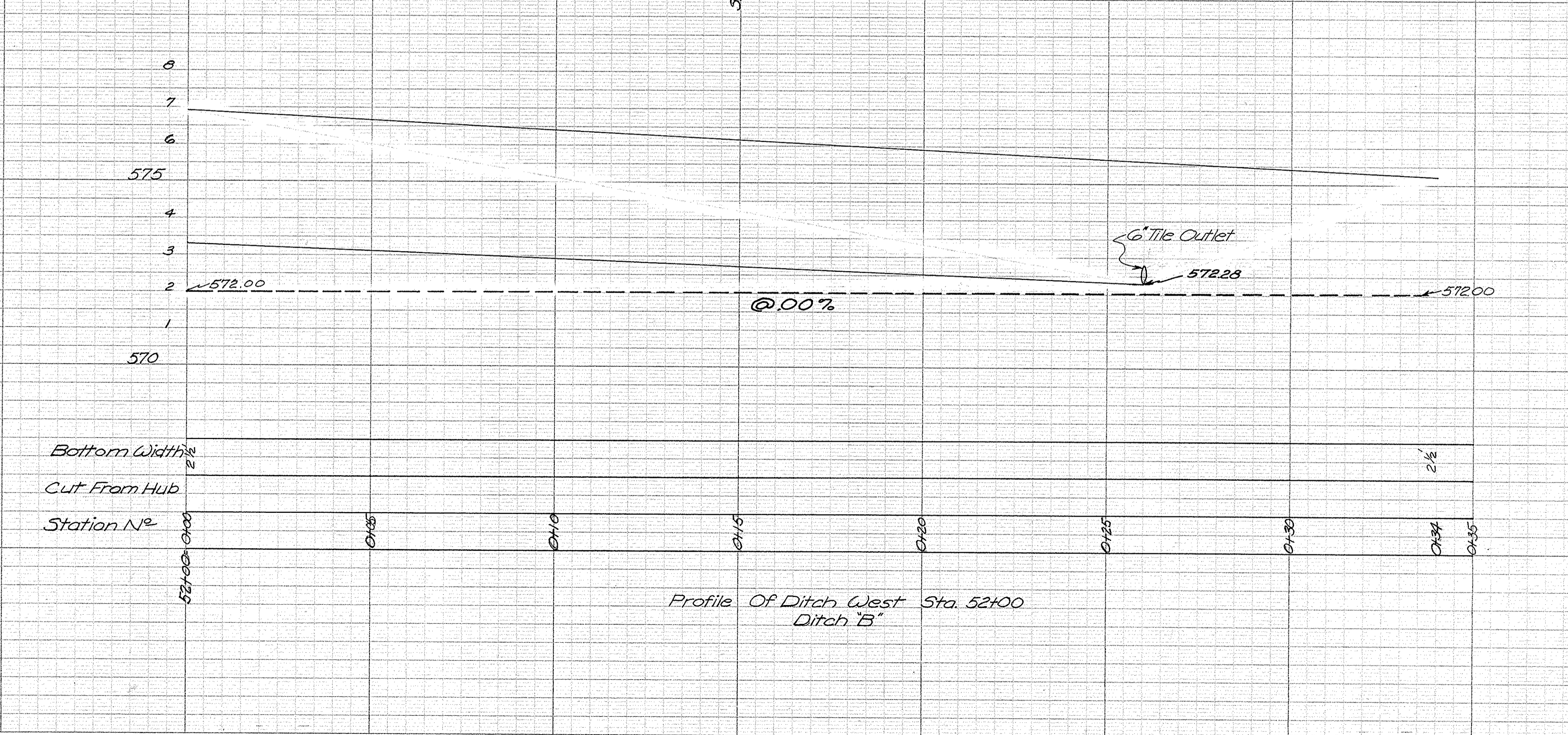
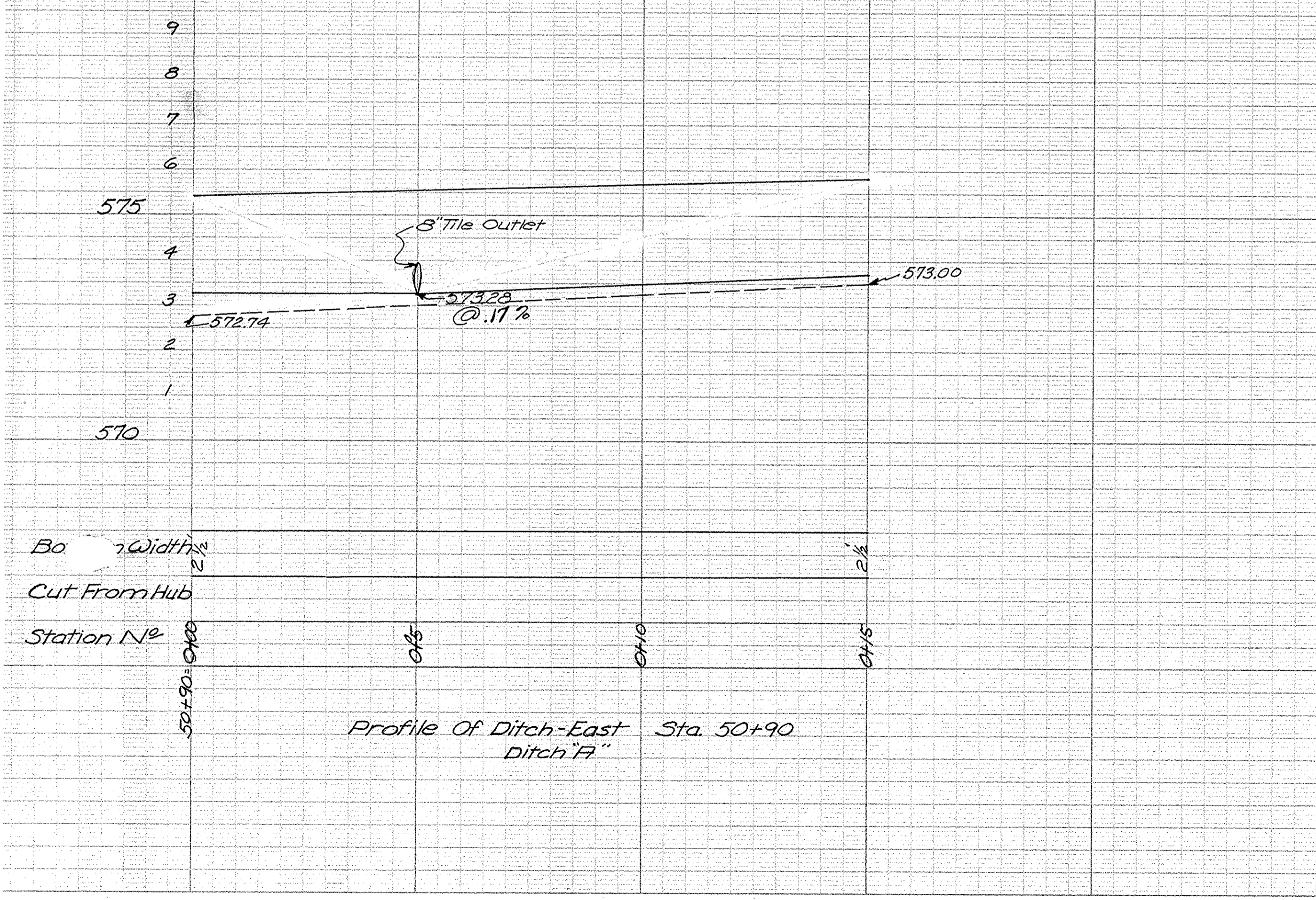
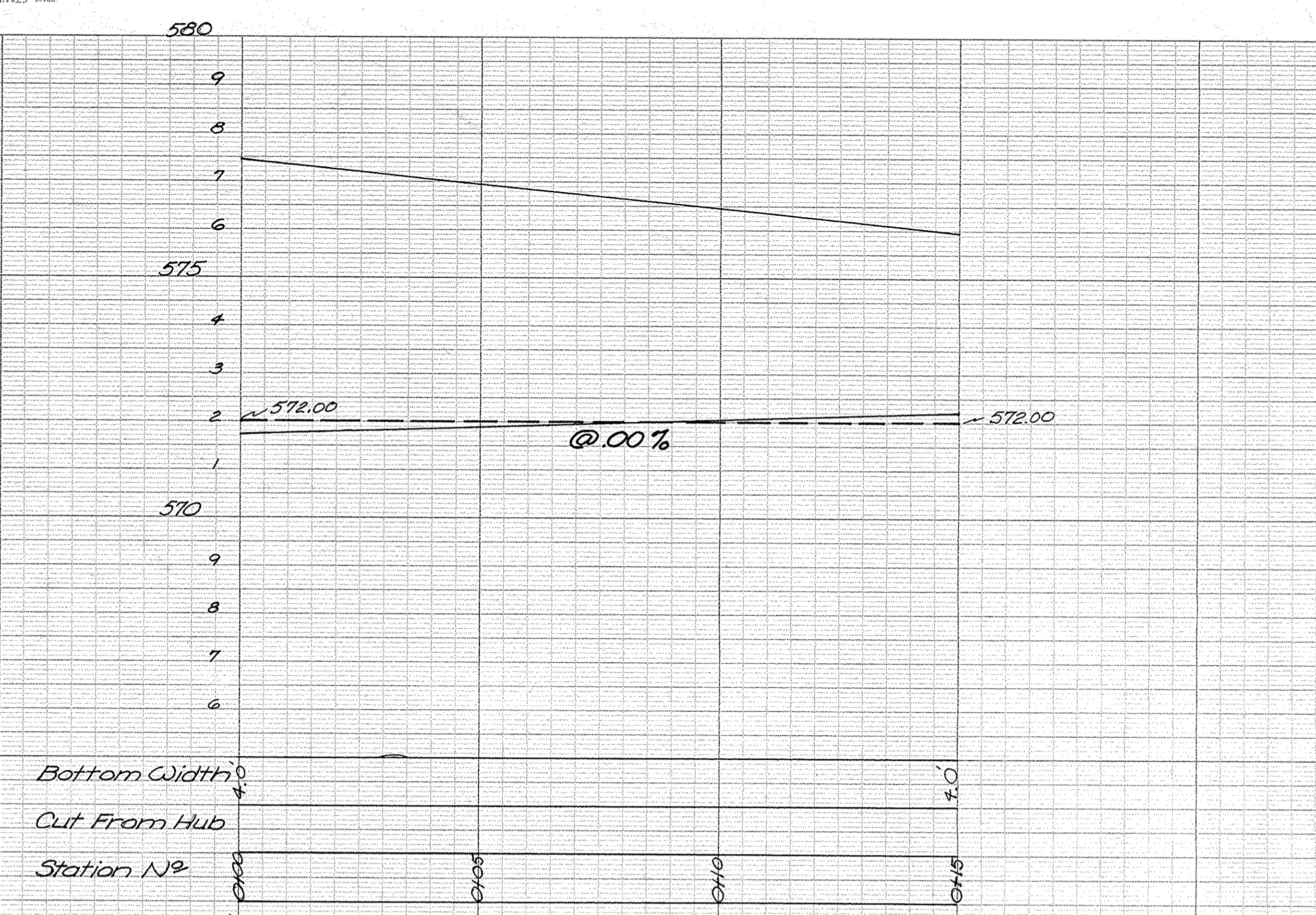
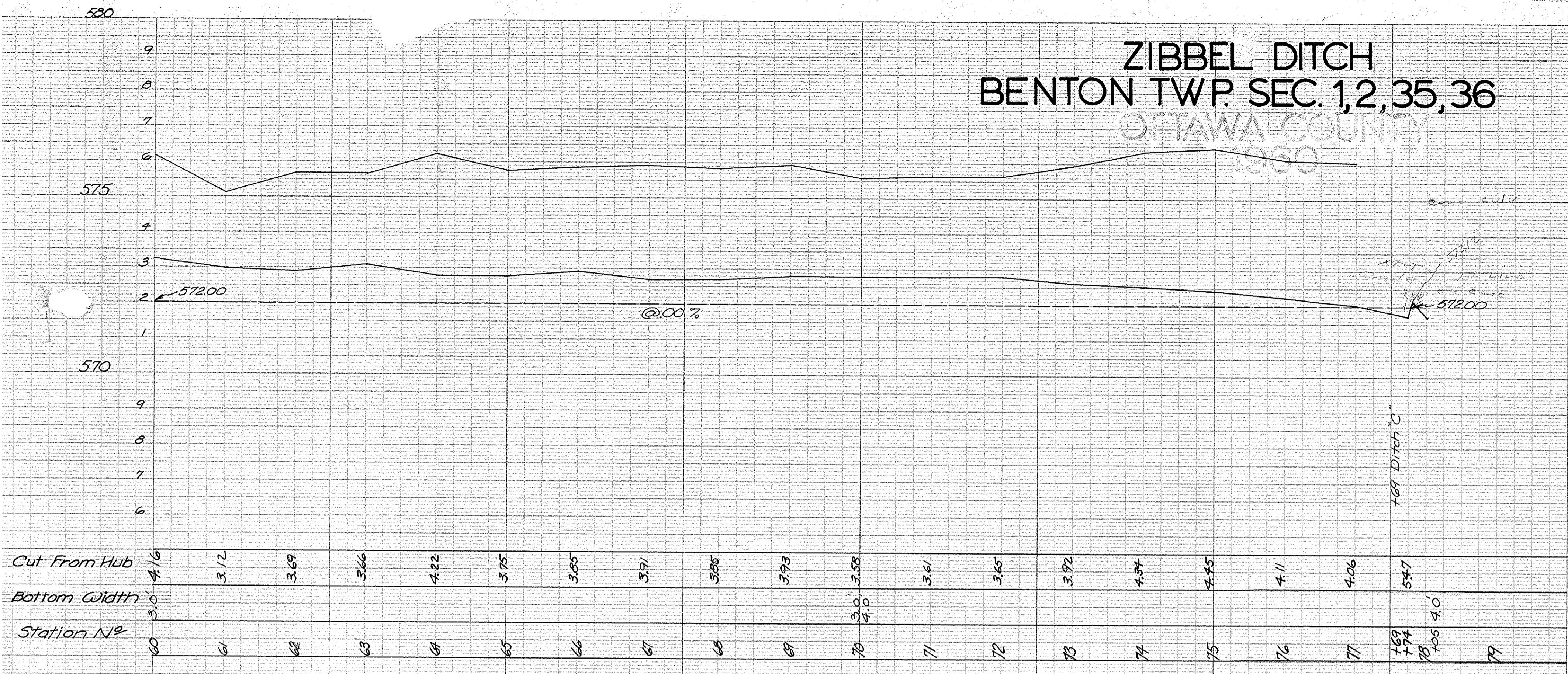


ZIBBEL DITCH BENTON TWP. SEC. 1, 2, 35, 36. OTTAWA COUNTY 1960



ZIBBEL DITCH BENTON TWP. SEC. 1, 2, 35, 36

OTTAWA COUNTY
1880



Profile of Ditch-East Sta. 50+90 Ditch 'A'

Profile of Ditch West Sta. 52+00 Ditch 'B'

Profile Ditch 'C' Sta. 77+69

769 Ditch 'C'

Sta. 77+69 = 0+00

KEUFFEL & ESSER CO. NEW YORK
 PROFILE PLANT A X 20
 MADE IN U.S.A.
 STANDARD
 KEUFFEL & ESSER CO. NEW YORK
 PROFILE PLANT A X 20
 MADE IN U.S.A.
 STANDARD
 KEUFFEL & ESSER CO. NEW YORK
 PROFILE PLANT A X 20
 MADE IN U.S.A.
 STANDARD

ZIBBEL DITCH BENTON TOWNSHIP

PIPE SITE
1100 acres drainage
1960

532.5
 Red Total drainage Zibbel Ditch incl. roads = 540.5 acres
 Green " " Nahs Branch incl. " = 201.33 ac
 Black " " Areas in Black = 90 + 30 + 224 = 344.00 acres
 " " Through Proposed Culvert = 1085.83 acres
 1077.83
 use 1100 acres for design
 3" rainfall in 24 hrs w/pipe on 0.05% grade

