

# BENCHMARKS

BM #1 CHISELED X ON SOUTHEAST CORNER OF WEIR ON DROP STRUCTURE, ON SOUTH SIDE OF TOUSSAINT EAST ROAD ON JOHN KOHLMAN FARM MSL 576.90

BM #2 SPIKE IN NORTH SIDE OF POWER POLE LOCATED APPROXIMATELY 50' EAST OF TURN IN DITCH AT KOHLMAN -HETRICK PROPERTY LINE AT STATION 12+55 MSL 578.32

BM #3 CHISELED X ON EAST END OF 36" RCP CULVERT OF HETRICK FARM LANE AT STATION 21+40 MSL 575.72

BM #4 CHISELED X ON NORTH END OF A 24" RCP ON NORTH SIDE OF TOUSSAINT EAST ROAD AT STATION 0+00 OF SIDE BRANCH A MSL 575.22

BM #5 CHISELED X ON WEST END OF 48" RCP CULVERT DEWITZ FARM LANE AT STATION 34+07 MSL 576.29

BM #6 CHISELED X ON EAST HEADWALL OF DEWITZ BOX CULVERT AT STA 34+82 MSL 576.55

BM #7 CHISELED X ON EAST END OF 60" EQUIVALENT ELLIPTICAL RCP UNDER APLING ROAD AT STATION 48+27 MSL 575.02

BM #8 CHISELED X ON WEST END OF 48" RCP USED FOR GRAVITY FLOW AT THE EXISTING PUMP SYSTEM APPROXIMATELY 600' EAST OF APLING ROAD AT STATION 54+00 MSL 574.15

BM #9 SPIKE IN NORTH SIDE OF POWER POLE ON SOUTH SIDE OF DITCH AT STATION 68+00 JUST WEST OF HEMMINGER FARM DRIVE MSL 577.30

BM #10 SPIKE IN THE SOUTHWEST SIDE OF A 36" DIAMETER COTTONWOOD TREE ON THE NORTH SIDE OF THE DITCH AT STATION 79+15 MSL 579.30

BM #11 SPIKE IN THE SOUTH SIDE OF A 30" DIAMETER COTTONWOOD TREE ON THE NORTH SIDE OF THE DITCH 50' WEST OF THE HEMMINGER BLAUSEY PROPERTY LINE AT STATION 83+90 MSL 579.03

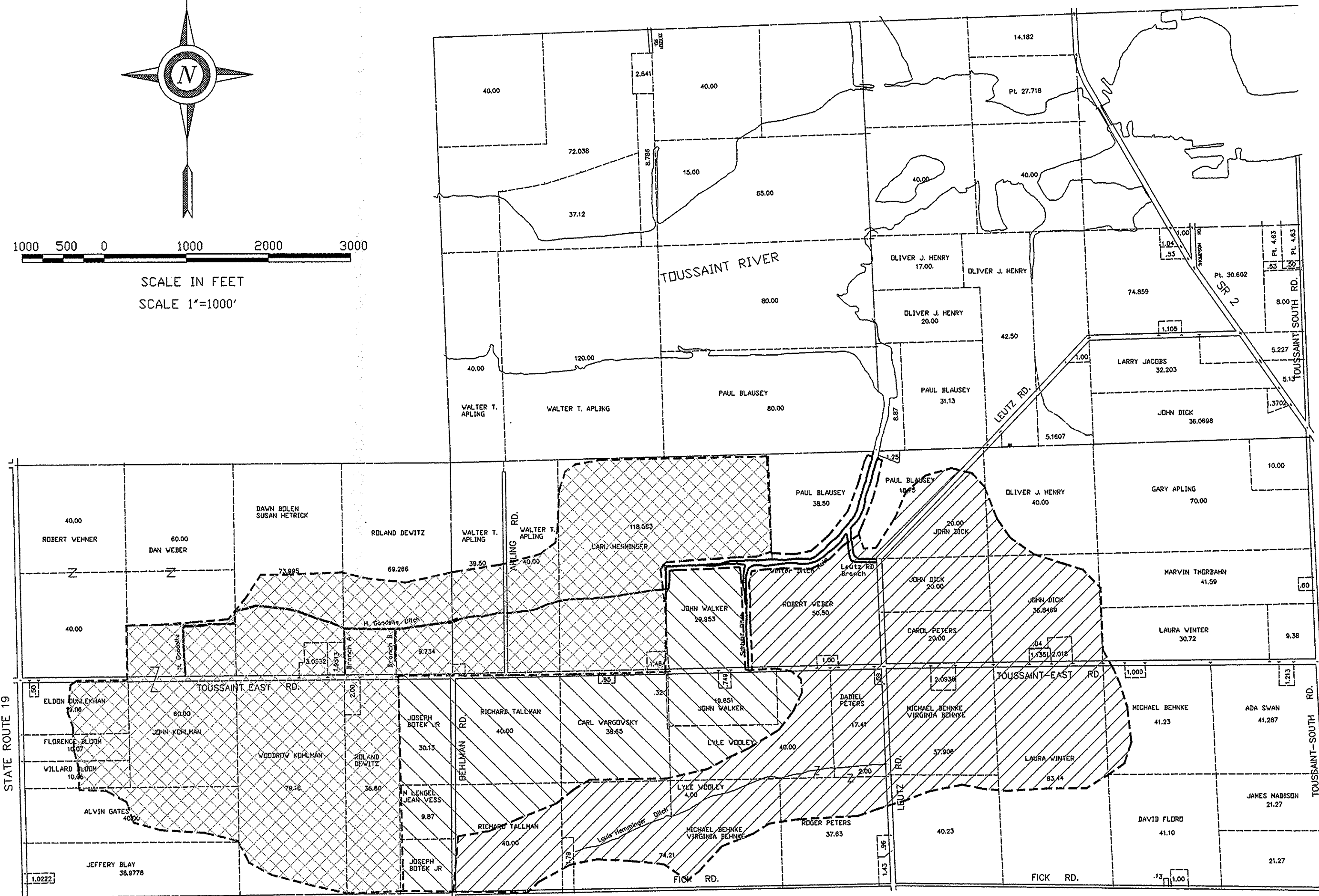
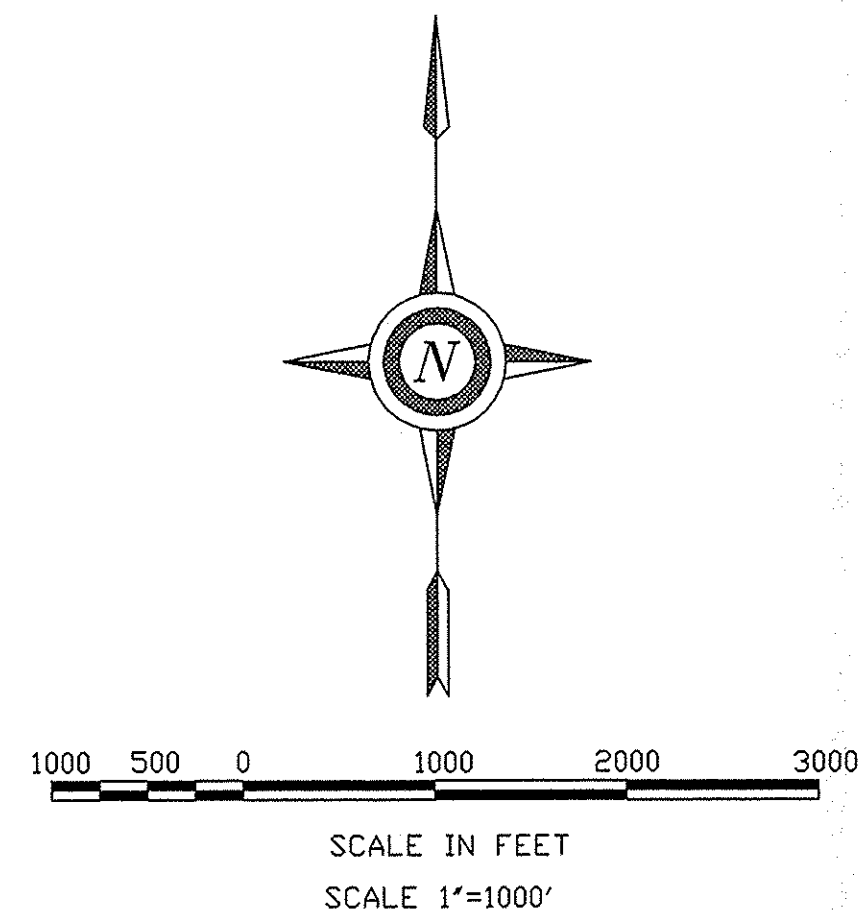
BM #12 CHISELED X ON CONCRETE HEADWALL ON THE NORTH SIDE OF PAUL BLAUSEY'S DRIVE AT STATION 105+36 MSL 578.01

BM #13 TOP OF 15" STEEL PIPE PUMP DISCHARGE, BEHIND FLOODGATE HINGE BRACKET, ON WEST SIDE OF SCHLUNZ DITCH ON JOHN WALKER PROPERTY APPROXIMATELY 1150' NORTH OF TOUSSAINT EAST ROAD MSL 575.16

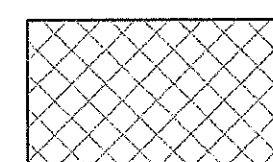
BM #14 CHISELED X ON TOP OF 36" RCP ON WEST SIDE OF SCHLUNZ DITCH STA 0+03 ON NORTH SIDE OF TOUSSAINT EAST ROAD MSL 574.06

BM #15 TOP OF WEST END OF 24" CMP ON WEST SIDE OF LEUTZ ROAD AT THE ROAD BEND AT STA 0+00 OF LEUTZ ROAD BRANCH DITCH MSL 574.52

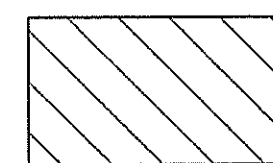
BM #16 RR SPIKE IN WEST SIDE OF POLE ON EAST SIDE OF LEUTZ RD 100' SOUTH OF STA 0+00 OF LEUTZ ROAD BRANCH DITCH MSL 577.45



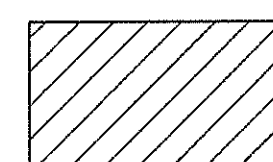
## WATERSHED KEY



GOODSITES CHANNEL



SCHLUNZ BRANCH



LEUTZ RD BRANCH

## SOILS

TOLEDO SILTY CLAY - THIS DEEP NEARLY LEVEL, VERY POORLY DRAINED SOIL IS ON BROAD FLATS AND IN LONG, NARROW CONCAVE AREAS ON LAKE PLAINS. IT IS SUBJECT TO PONDING OF SHORT DURATION. SLOPE IS 0 TO 2 PERCENT.

TOLEDO SILTY CLAY, PONDED - THIS DEEP, NEARLY LEVEL, VERY POORLY DRAINED SOIL IS IN LONG, NARROW CONCAVE AREAS ALONG DRAINAGEWAYS AND ON BROAD FLATS ON LAKE PLAINS. IT IS SUBJECT TO PONDING OF LONG DURATION. SLOPE IS 0 TO 2 PERCENT.

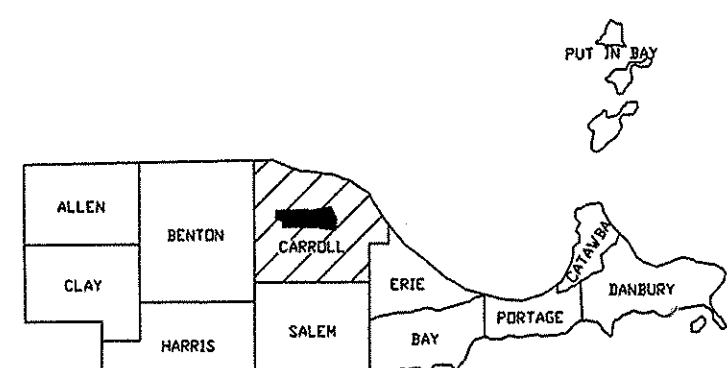
NAPPANEE SILTY CLAY LOAM - THIS DEEP, NEARLY LEVEL, SOMEWHAT POORLY DRAINED SOIL IS ON SLIGHT CONVEX RISES AND SIDE SLOPES ALONG DRAINAGEWAYS ON LAKE PLAINS. SLOPE IS 0 TO 3 PERCENT.

## Job Class V

WINTER DITCH DRAINAGE IMPROVEMENT  
CARROLL TOWNSHIP  
SECTIONS 10, 11, 14, 15, 16  
OTTAWA COUNTY OHIO

U.S. DEPARTMENT OF AGRICULTURE  
NATURAL RESOURCES CONSERVATION SERVICE

Designed	MIKE GARGAC	Date	7/98	Approved by	_____
Drawn	MIKE GARGAC	Title	7/98	Const. Approval	_____
Redlined	_____	Sheet	_____	Drawing No.	_____
Checked	P.W. Chester	No.	4/99	of 12	39-01-383-99-02



# PLAN OF WINTERS DITCH

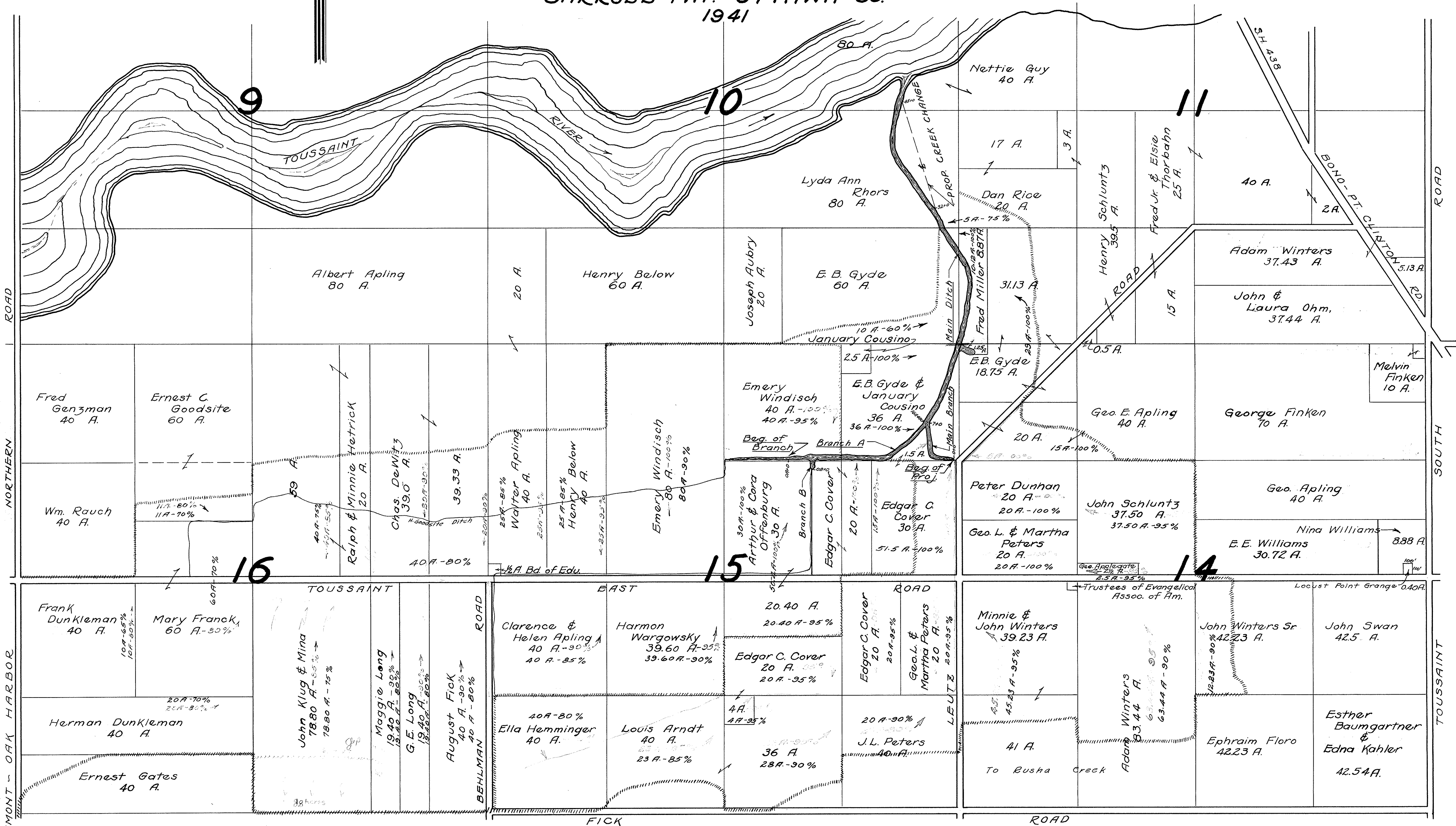
## CARROLL TWP.-OTTAWA CO.

### 1941

-LEGEND-

Area Benefited By Winters Ditch   
 Acres Benefited By Branches A & B   
 Acres Benefited By Main Branch Sta. 70 to 74   
 Acres Benefited By Main Ditch Sta. 70 to 71

SCALE: 1" = 500'



FREMONT - OAK HARBOR

NORTHERN ROAD SOUTH TOUSSAINT

9

10

11

16

15

14

TOUSSAINT RIVER

PROP. CREEK CHANGE

Nettie Guy  
40 A.

Lyda Ann Rhors  
80 A.

Dan Rice  
20 A.

Albert Apling  
80 A.

Henry Below  
60 A.

E. B. Gyde  
60 A.

Henry Schluntz  
39.5 A.

Fred Jr. & Elsie Thorbahn  
25 A.

40 A.

Adam Winters  
37.43 A.

John & Laura Ohm  
37.44 A.

Melvin Finken  
10 A.

Fred Genzman  
40 A.

Ernest C. Goodsite  
60 A.

Ralph & Minnie Hetrick  
20 A.

Chas. DeWitz  
39.0 A.

Walter Apling  
40 A.

Henry Below  
40 A.

Emery Windisch  
80 A. - 90%

Emery Windisch  
40 A. - 100%

E. B. Gyde & January Cousino  
36 A. - 100%

E. B. Gyde  
18.75 A.

Geo. E. Apling  
40 A.

George Finken  
70 A.

Wm. Rauch  
40 A.

11A - 70%

59 A.

40 A. - 75%

39.33 A.

25A - 85%

25A - 85%

25A - 85%

25A - 85%

25A - 85%

25A - 85%

25A - 85%

Arthur & Cora Offenburg  
30 A. - 100%

Edgar C. Cover  
20 A. - 100%

Peter Dunhan  
20 A. - 100%

John Schluntz  
37.50 A. - 95%

Geo. Apling  
40 A.

Nina Williams  
8.88 A.

Frank Dunkleman  
40 A.

Mary Franck  
60 A. - 80%

John Klug & Mina  
78.80 A. - 85%

Maggie Long  
19.40 A. - 99%

G. E. Long  
19.40 A. - 80%

August Fick  
40 A. - 90%

40 A. - 80%

Clarence & Helen Apling  
40 A. - 85%

Harmon Wargowsky  
39.60 A. - 95%

Edgar C. Cover  
20 A. - 95%

Edgar C. Cover  
20 A. - 95%

Minnie & John Winters  
39.23 A.

45.23 A. - 95%

John Winters Sr  
42.23 A.

John Swan  
42.5 A.

Herman Dunkleman  
40 A.

20 A. - 70%

78 acres

40 A. - 80%

Ella Hemminger  
40 A.

Louis Arndt  
40 A.

4 A. - 85%

J. L. Peters  
40 A.

41 A.

63.44 A. - 90%

Ephraim Floro  
42.23 A.

Esther Baumgartner & Edna Kahler  
42.54 A.

Ernest Gates  
40 A.

FICK

ROAD