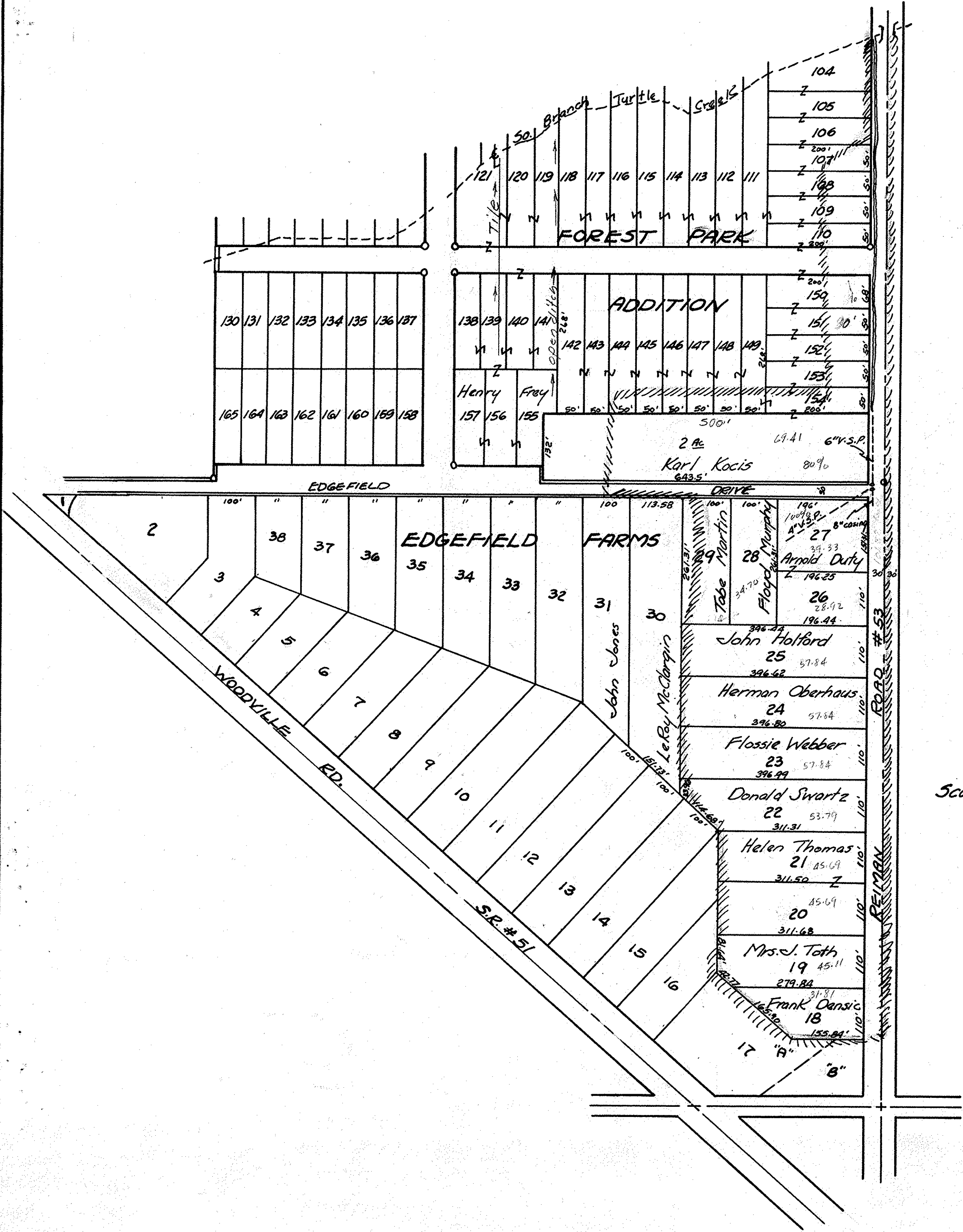


REIMAN RD. DITCH
 SEC. 20 CLAY TWP
 OTTAWA COUNTY
 1964



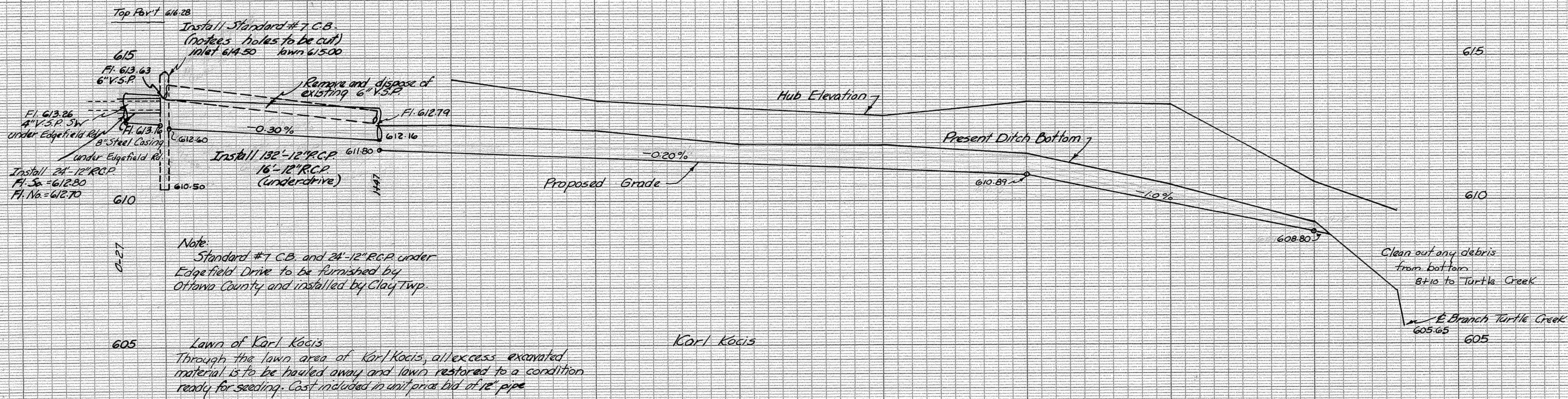
REIMAN RD. DITCH
 SEC. 20 CLAY TWP.
 OTTAWA COUNTY
 1964

BM Sta. 1+47
 Spk. Po. Rd. West
 Ele. 615.91

BM Sta. 8+68
 "X" No. End E. Hdwall
 Ele. 612.77

BM 18+90±
 "a" Cut NW cor Bridge
 Ele. 611.45

BM 18+90±
 "X" top Conc. Post NW cor. Bridge
 Ele. 614.42



Note:
 Standard #7 C.B. and 24'-12" R.C.P. under Edgefield Drive to be furnished by Ottawa County and installed by Clay Twp.

Lawn of Karl Kocis
 Through the lawn area of Karl Kocis, all excess excavated material is to be hauled away and lawn restored to a condition ready for seeding. Cost included in unit price bid of 12" pipe.

Karl Kocis

Width of Bottom	lawn pipe								
Cut from Hub	3'	2.25'	1.99'	1.91'	1.87'	2.53'	3.44'	1.78'	
Station	0+27	1+47	2+25	3	4	5	6	7	8