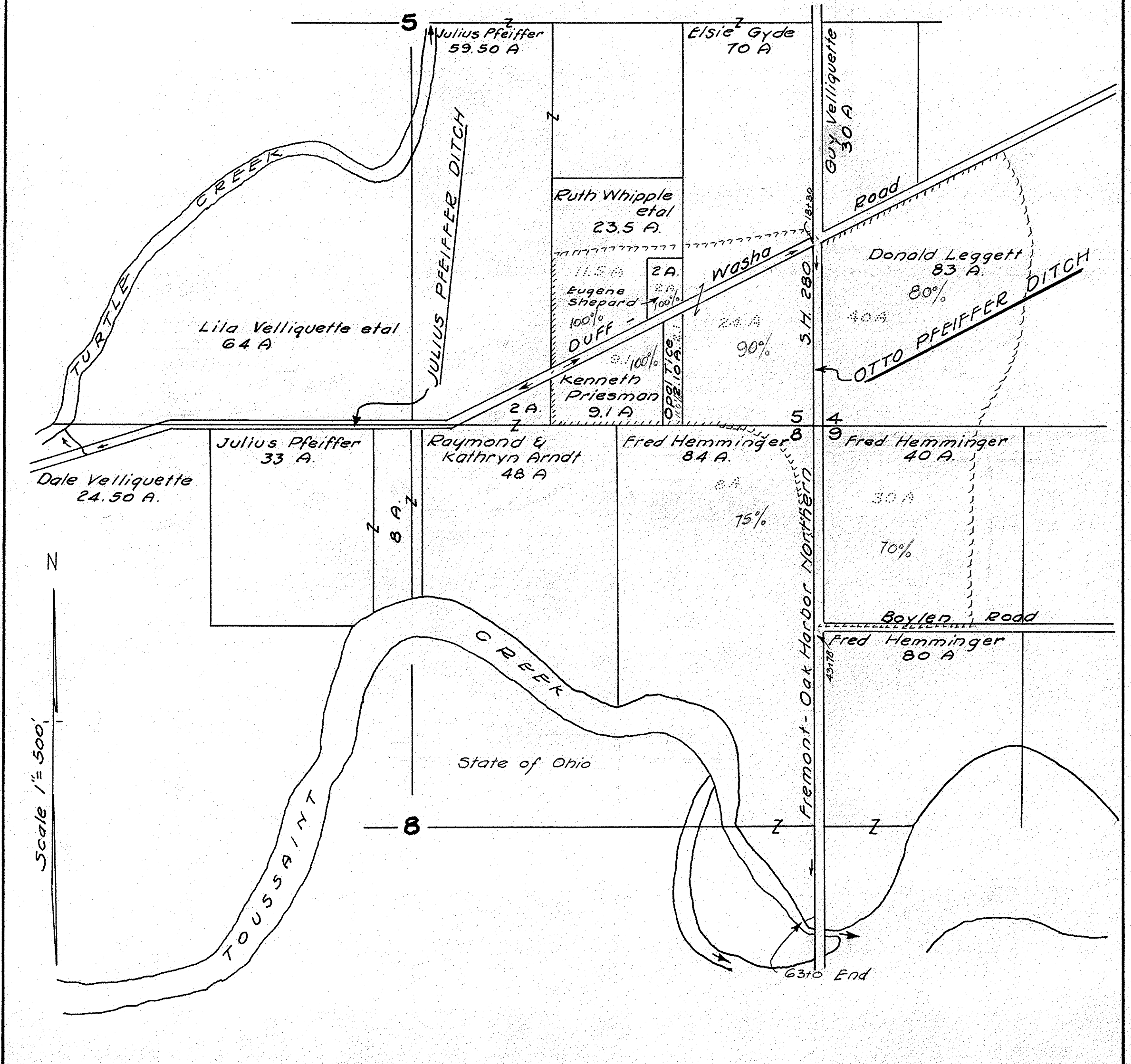


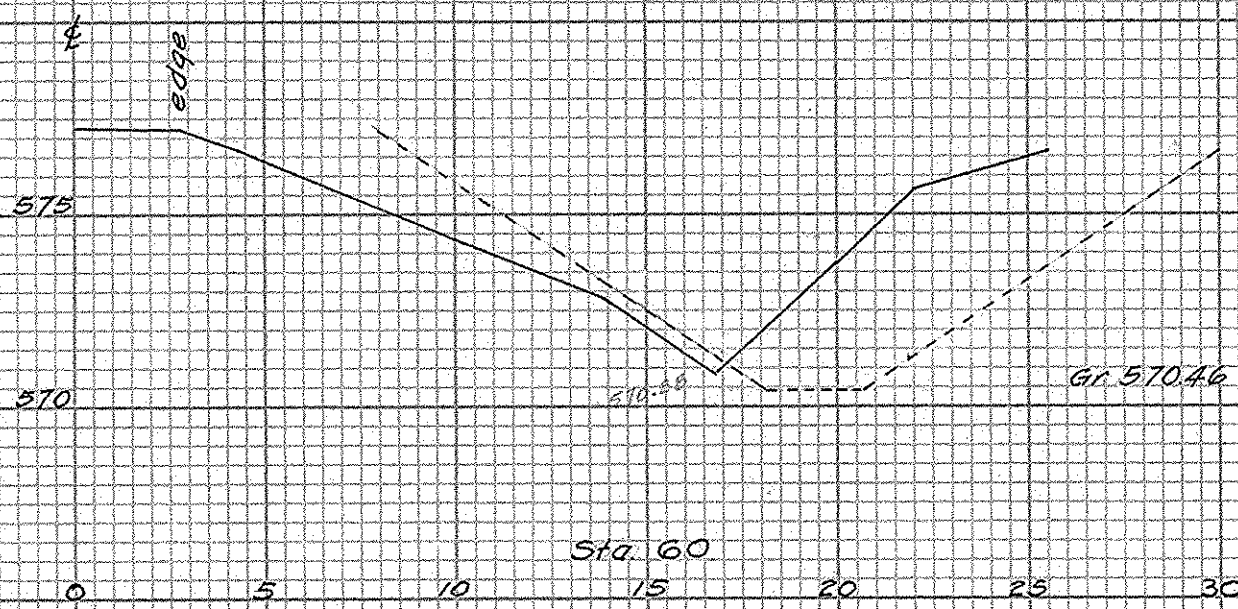
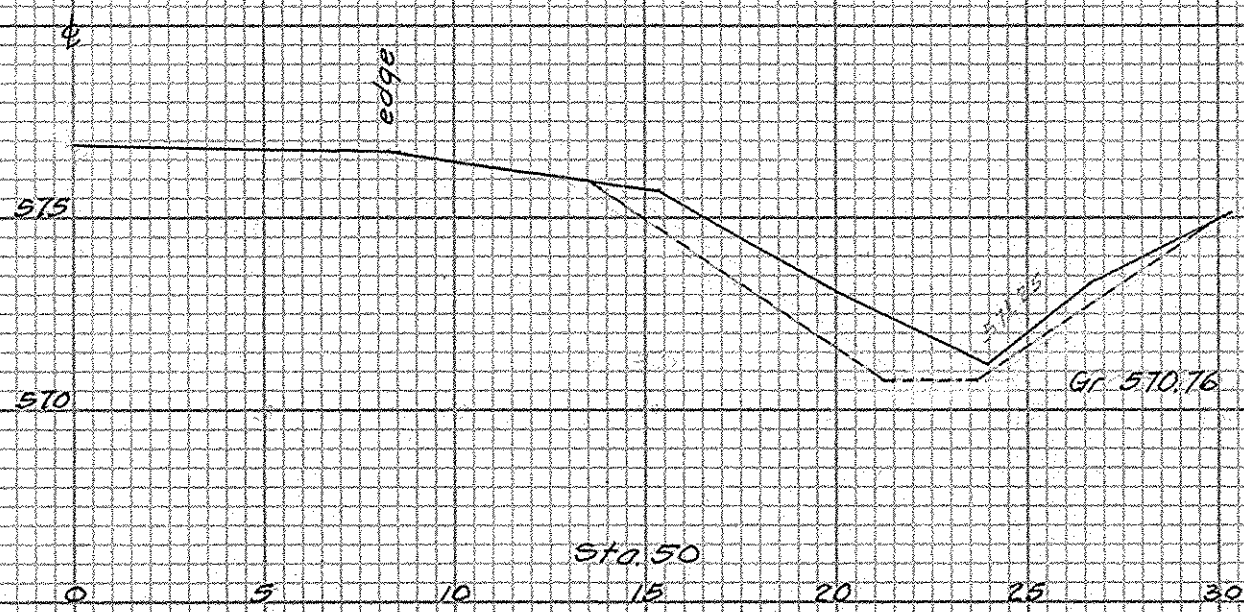
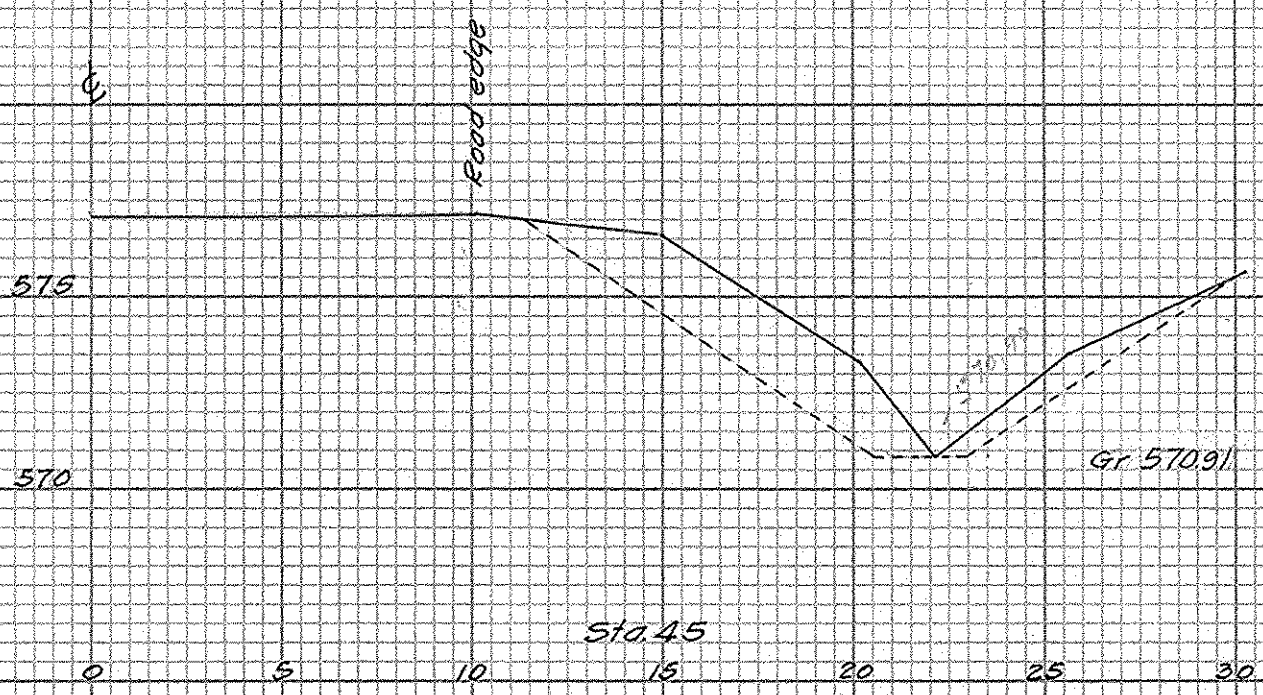
OTTO PFEIFFER DITCH

CARROLL TWP. SEC. 4-5-8-9
OTTAWA COUNTY
1962



OTTO PFEIFFER DITCH
CARROLL TWP.
1962

3/3

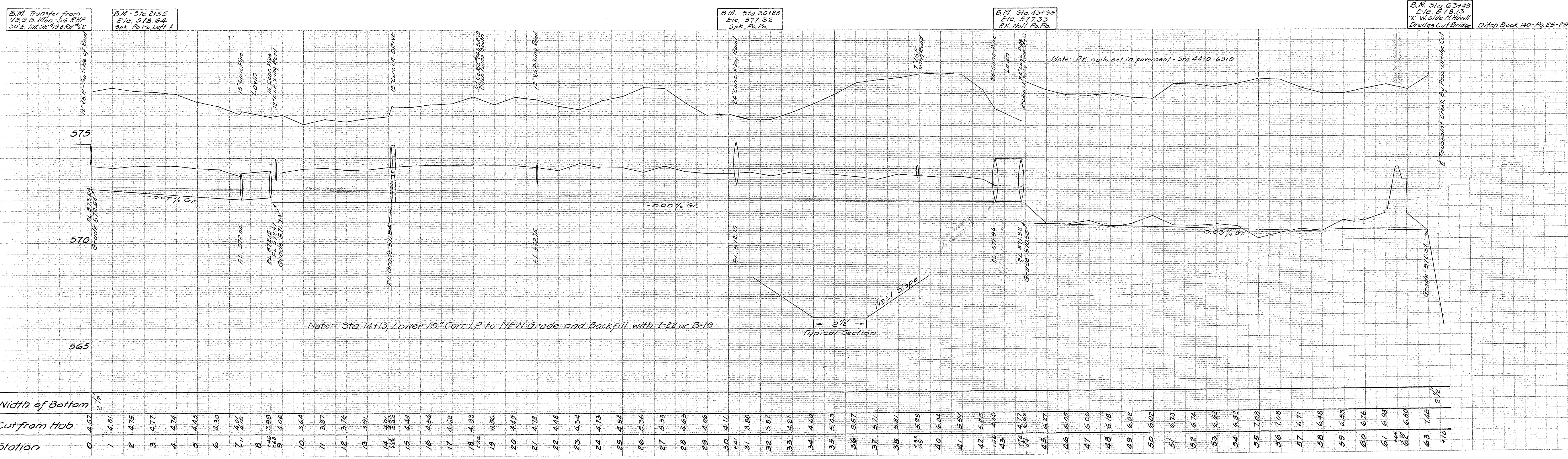


OTTO PFEIFFER DITCH

CARROLL TWP. SEC. 4-5-8-9

OTTAWA COUNTY

1962



B.M. Transfer from
U.S. W.P. - 50' S. 1/4 of E. 1/4
30' E. Int. 56' 19' R. 42'

B.M. Sta. 2155
Elev. 578.64
Spk. Pa. Po. Left E.

B.M. Sta. 30188
Elev. 577.32
Spk. Pa. Po.

B.M. Sta. 43+95
Elev. 577.33
PK Nail Pa. Po.

B.M. Sta. 63+49
Elev. 578.13
"X" W. Side N. Howell
Dredge Cut Bridge Ditch Book 140 - Pg. 25-29

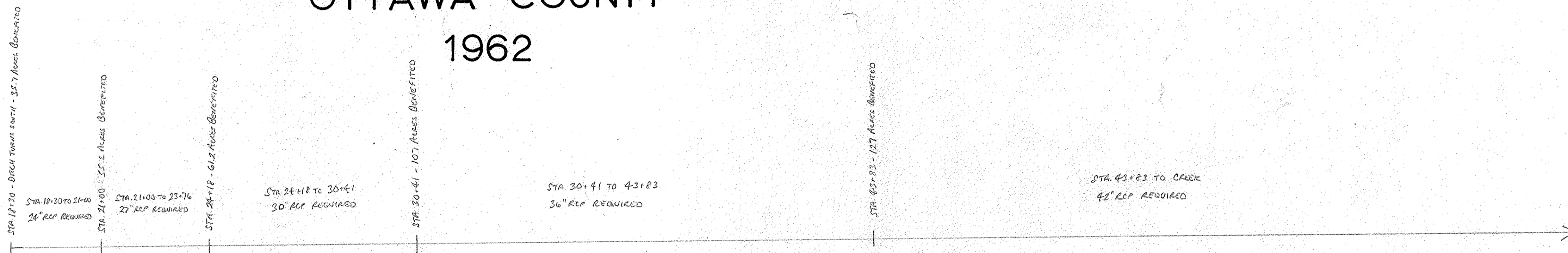
Station	0	1	2	3	4	5	6	7	8	9	10	11	12	13	14	15	16	17	18	19	20	21	22	23	24	25	26	27	28	29	30	31	32	33	34	35	36	37	38	39	40	41	42	43	44	45	46	47	48	49	50	51	52	53	54	55	56	57	58	59	60	61	62	63	49
Width of Bottom	4.57	4.81	4.75	4.77	4.74	4.45	4.30	4.01	3.98	4.06	3.64	3.87	3.76	3.91	3.06	4.44	4.56	4.62	4.93	4.56	4.89	4.78	4.48	4.34	4.73	4.94	5.36	5.33	4.63	4.06	4.11	3.86	3.87	4.21	4.60	5.03	5.57	5.71	5.81	5.99	6.04	5.97	5.25	4.38	4.77	6.27	6.05	6.06	6.18	6.02	6.73	6.74	6.67	6.82	7.08	7.08	6.71	6.48	6.53	6.76	6.98	6.80	7.45	49	
Cut from Hub	4.57	4.81	4.75	4.77	4.74	4.45	4.30	4.01	3.98	4.06	3.64	3.87	3.76	3.91	3.06	4.44	4.56	4.62	4.93	4.56	4.89	4.78	4.48	4.34	4.73	4.94	5.36	5.33	4.63	4.06	4.11	3.86	3.87	4.21	4.60	5.03	5.57	5.71	5.81	5.99	6.04	5.97	5.25	4.38	4.77	6.27	6.05	6.06	6.18	6.02	6.73	6.74	6.67	6.82	7.08	7.08	6.71	6.48	6.53	6.76	6.98	6.80	7.45	49	

OTTO PFEIFFER DITCH

CARROLL TWP. SEC. 4-5-8-9

OTTAWA COUNTY

1962



* NOTE: SEE CARROLL TWP 1991 Bk. Pgs. 26-29 Carroll 1997 Ok. P. 62 101 ROADHOUSE CURVE AT INT. C.R. 24 & S.R. 19.

* (PLAN DRAWN FROM LEVELS PERFORMED IN AUG., 1993)

May 2004 ROADHOUSE CURVE FROM 2004 PLAN STA. 30+15 SOUTH CARROLL TWP. 2002 BE. PL. 34.

B.M. Transfer from U.S.G.S. Mon. 56 RHP 30 F. Int. 58 19 94 62

B.M. Sta. 2155 Ele. 578.64 Spk. Po. Po. Left 4

NOTE: 0.00% INWARD ROADHOUSE CURVE ALONG THE WEST SIDE OF S.R. 19 AND SOUTH SIDE OF R. WHOLE RD.

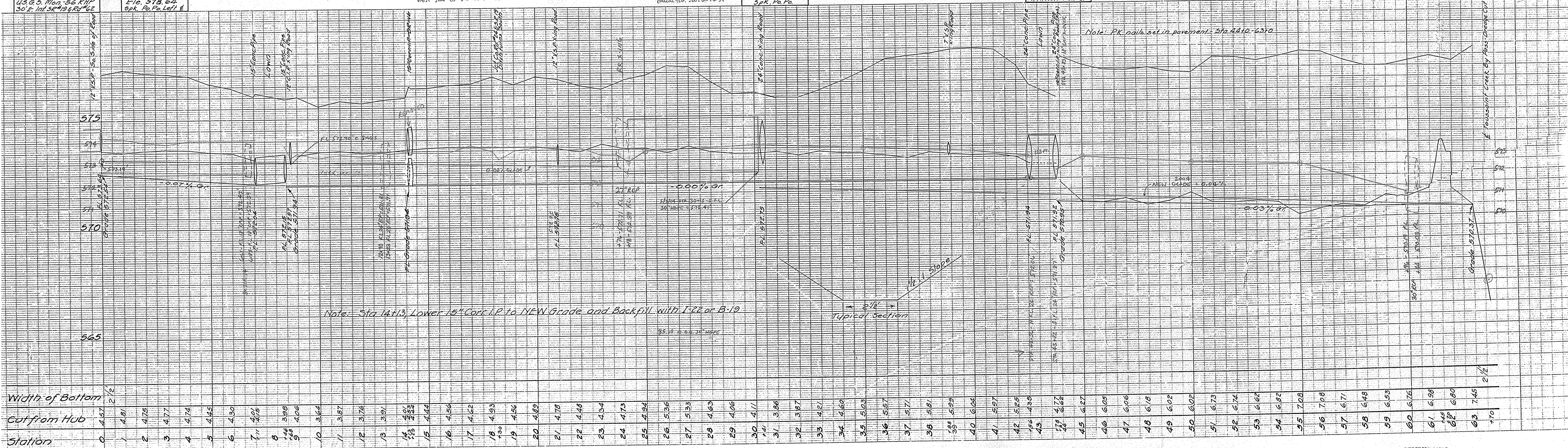
Stationed NEW B.M. - F.S. R.L. 200 in Pk. Sta. - 5.510' S. 26.79' S. Sta. 29+29 Curve, 577.33' Original Top. 2002 BE. PL. 34

B.M. Sta. 30188 Ele. 577.32 Spk. Po. Po.

B.M. Sta. 43+98 Ele. 577.33 Spk. Po. Po.

B.M. Sta. 63+49 Ele. 578.13 X" W. Side N.H.W.I. Dredge Cut Bridge Ditch Book 1

RED = EXISTING DITCH BOTTOM
BLUE = WATER



Station	Cut from Hub	Width of Bottom
0	4.57	2 1/2
1	4.81	
2	4.75	
3	4.77	
4	4.74	
5	4.45	
6	4.30	
7	4.01	
8	3.98	
9	4.06	
10	3.64	
11	3.87	
12	3.76	
13	3.91	
14	4.01	
15	4.44	
16	4.86	
17	4.22	
18	4.93	
19	4.86	
20	4.82	
21	4.78	
22	4.48	
23	4.54	
24	4.73	
25	4.94	
26	5.36	
27	5.33	
28	4.63	
29	4.06	
30	4.11	
31	3.86	
32	3.87	
33	4.21	
34	4.60	
35	5.03	
36	5.57	
37	5.71	
38	5.81	
39	5.99	
40	6.04	
41	5.97	
42	5.25	
43	4.98	
44	4.71	
45	6.27	
46	6.03	
47	6.06	
48	6.18	
49	6.02	
50	6.02	
51	6.73	
52	6.74	
53	6.67	
54	6.82	
55	7.08	
56	7.00	
57	6.71	
58	6.48	
59	6.53	
60	6.76	
61	6.98	
62	6.80	
63	7.45	2 1/2