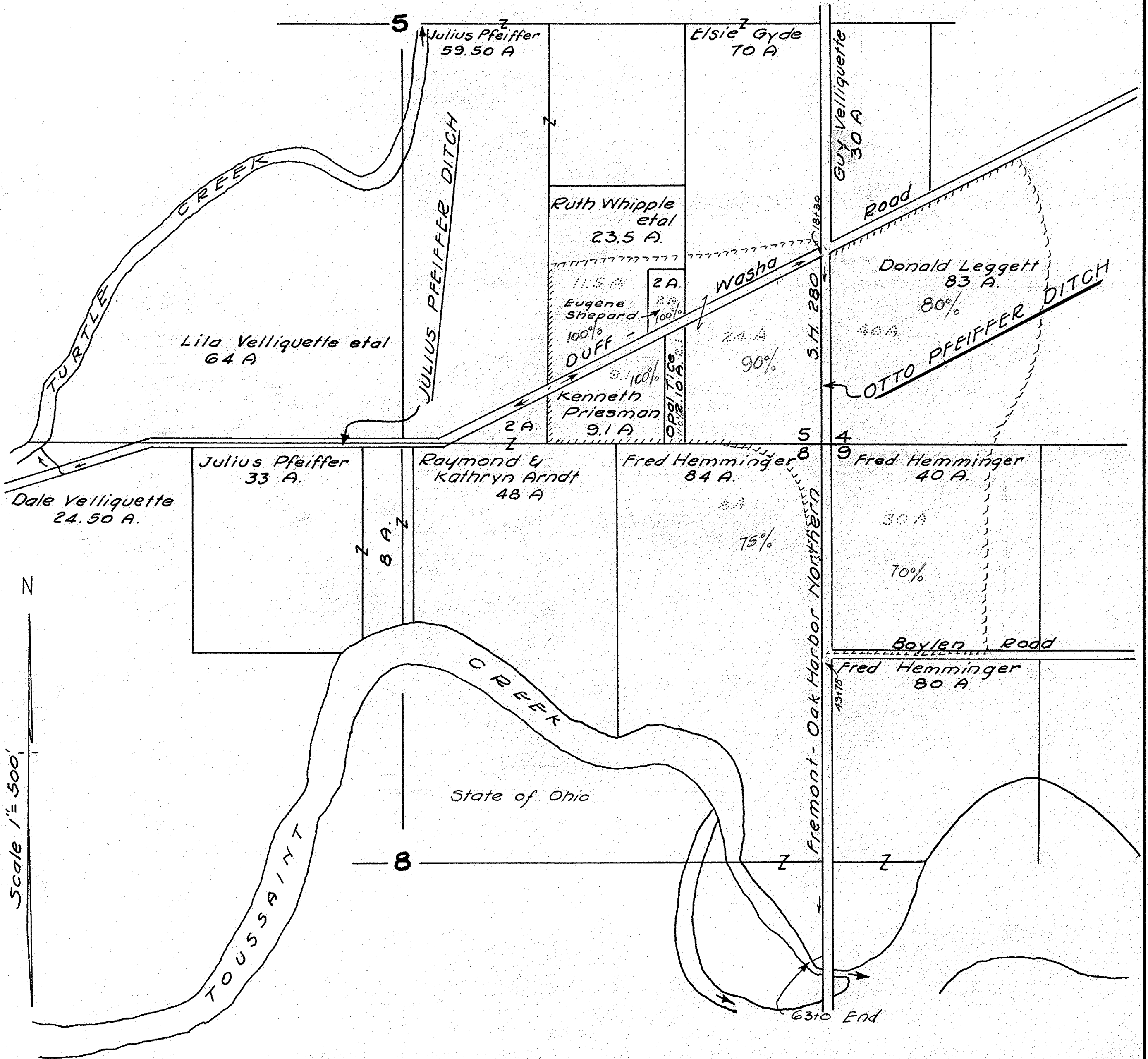
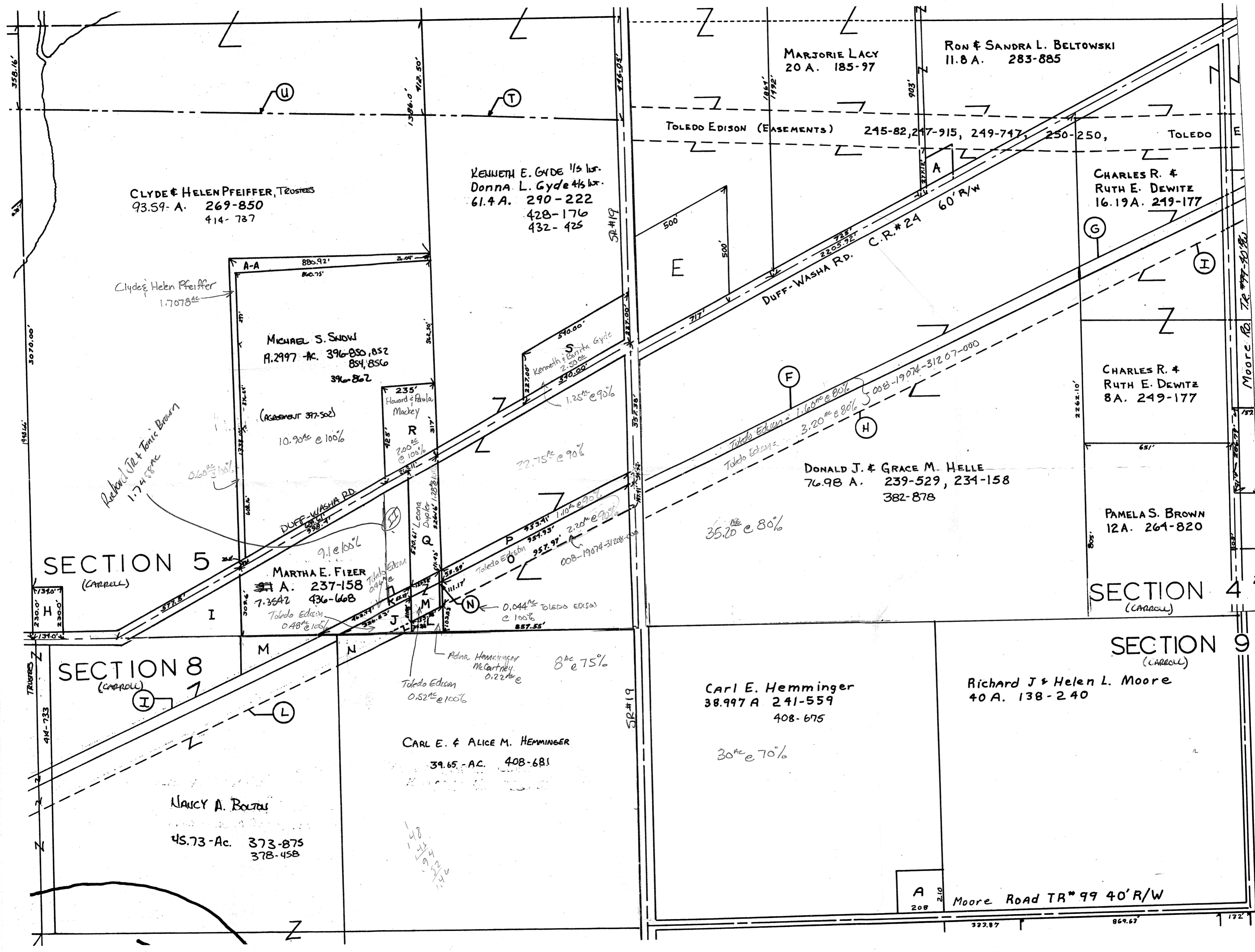


# OTTO PFEIFFER DITCH CARROLL TWP. SEC. 4-5-8-9 OTTAWA COUNTY 1962





CLYDE & HELEN PFEIFFER, TRUSTEES  
93.59-A. 269-850  
414-787

KENNETH E. GYDE 1/2 Int.  
Donna L. Gyde 4/6 Int.  
61.4 A. 290-222  
428-176  
432-425

MARJORIE LACY  
20 A. 185-97

RON & SANDRA L. BELTOWSKI  
11.8 A. 283-885

TOLEDO EDISON (EASEMENTS) 245-82, 247-915, 249-747, 250-250, TOLEDO

CHARLES R. &  
RUTH E. DEWITZ  
16.19 A. 249-177

CHARLES R. &  
RUTH E. DEWITZ  
8 A. 249-177

DONALD J. & GRACE M. HELLE  
76.98 A. 239-529, 234-158  
382-878

PAMELA S. BROWN  
12 A. 264-820

SECTION 4  
(CARROLL)

SECTION 9  
(CARROLL)

SECTION 5  
(CARROLL)

SECTION 8  
(CARROLL)

CARL E. & ALICE M. HEMMINGER  
39.65 - AC. 408-681

Carl E. Hemminger  
38.997 A 241-559  
408-675

Richard J & Helen L. Moore  
40 A. 138-240

Clyde & Helen Pfeiffer  
1.7078 ac

Richard J & Toni Brown  
1.7458 ac

MICHAEL S. SNOW  
A. 2997 AC. 396-850, 852  
854, 856  
396-802

(AGREEMENT 377-502)  
10.90 ac @ 100%

MARTHA E. FIZER  
A. 237-158  
7.35 AC 436-668

Toledo Edison  
0.48 ac @ 100%

Howard & Paula  
Mackey  
2.00 ac  
@ 100%

Leona  
Dwyer  
0.26 ac @ 100%

Adna Hemminger  
McCartney  
0.22 ac @  
Toledo Edison  
0.52 ac @ 100%

Kenneth & Cynthia Gyde  
2.50 ac  
390.50'

22.75 ac @ 90%

1.10 ac @ 90%  
2.20 ac @ 90%

0.044 ac TOLEDO EDISON  
@ 100%  
857.55'

35.20 ac @ 80%

Toledo Edison = 1.66 ac @ 80%  
3.20 ac @ 80%

A 208  
Moore Road TR #99 40' R/W

337.87 869.67 172'