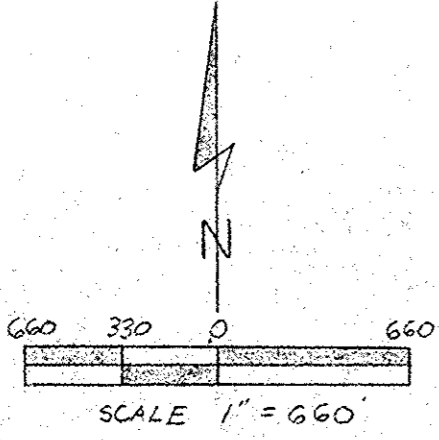


OWNERSHIP & WATERSHED MAP

LEGEND

PROPOSED IMPROVEMENT	
ROADS	
PROPERTY BOUNDARY	
WATERSHED BOUNDARY	
RAILROAD	
ACRES OWNED	OO AC.
ACRES BENEFITED	CC AC.

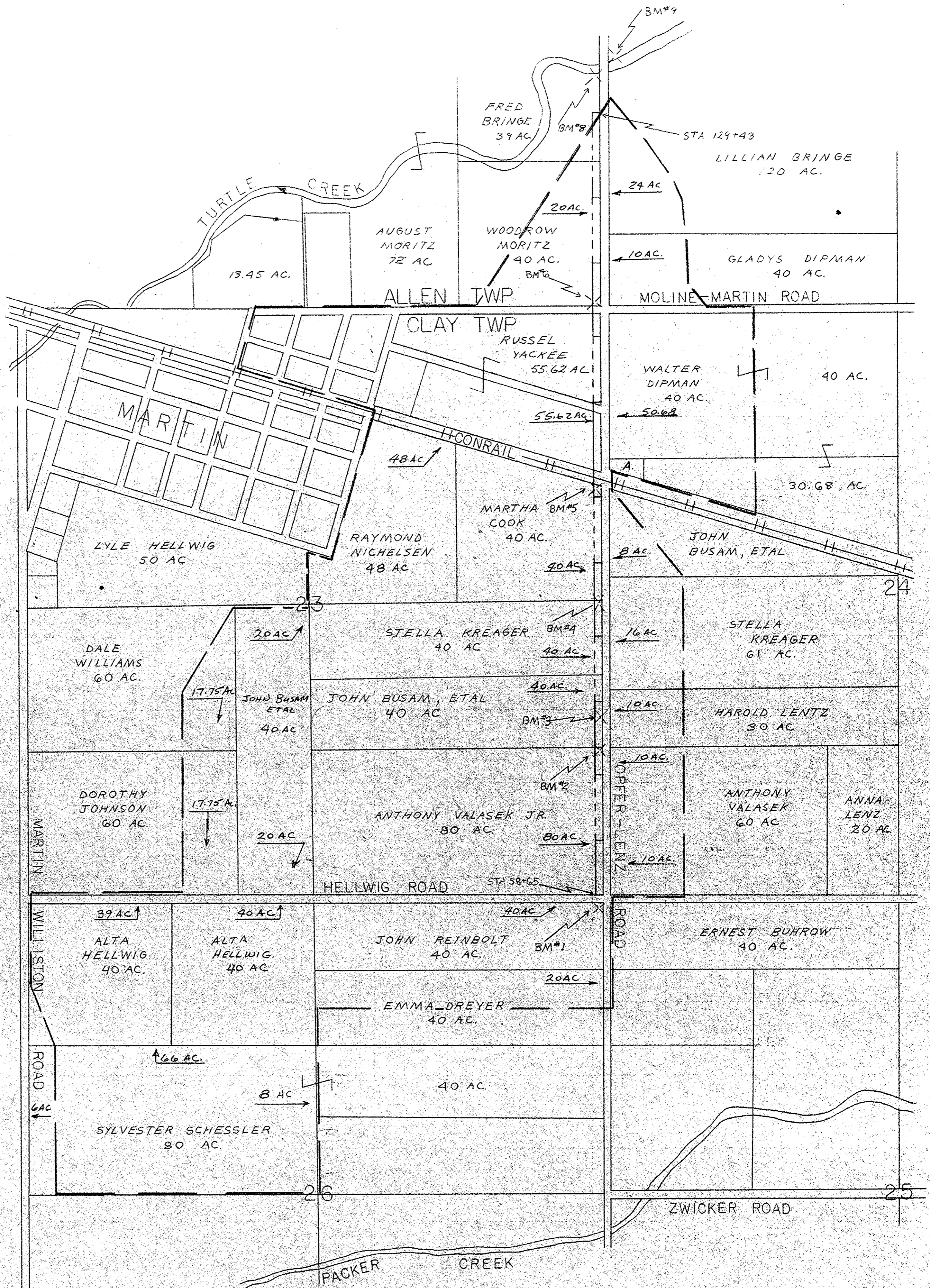


SUPPORTING DATA

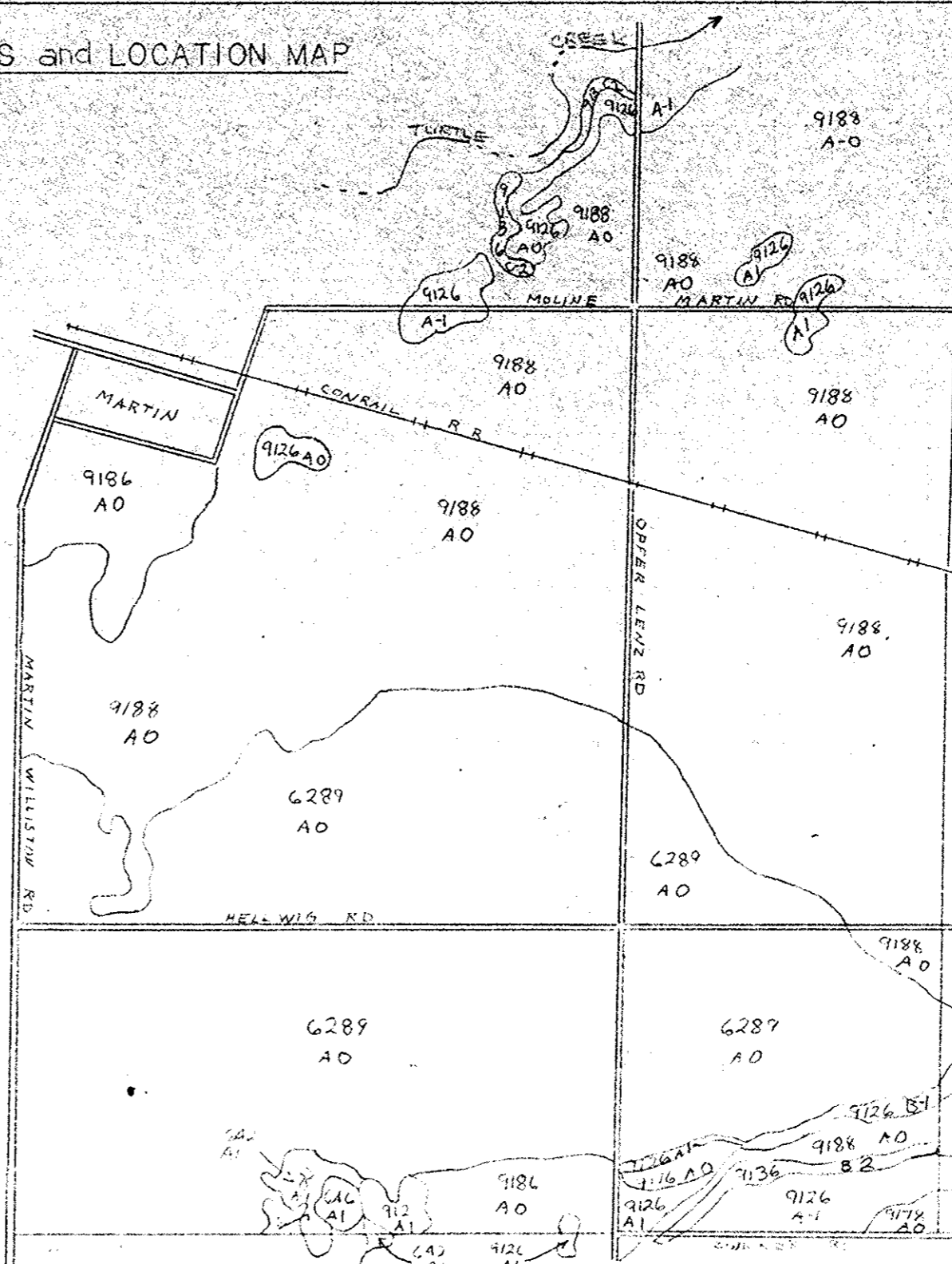
DRAINAGE AREA	787 ACRES
DESIGN COEFFICIENT	Q _C
LAND USE	GENERAL & CASH CROPS
SOIL TYPES	FULTON, LUCAS, TOLEDO, HOYTVILLE, MILTON & RANDOLPH
LAND SLOPE	0-2%
TYPE DRAINAGE	SURFACE & SUB-SURFACE

LOCATION

THE WATERSHED CONSISTS OF LAND WITHIN THE SW AND NW 1/4 OF THE SW 1/4 OF SECTION 13, AND THE SE AND NE 1/4 OF THE SE 1/4 OF SECTION 14 IN ALLEN TWP; THE NE 1/4 OF THE NW 1/4, THE NE 1/4, THE NE AND SE 1/4 OF THE SW 1/4 AND THE SE 1/4 OF SECTION 23 IN CLAY TWP; THE NW AND SW 1/4 OF THE NW 1/4, AND THE NW AND SW 1/4 OF THE SW 1/4 OF SECTION 24 IN CLAY TWP; THE NW AND NE 1/4 OF THE NE 1/4 AND THE NW 1/4 OF SECTION 26 IN CLAY TWP.



SOILS and LOCATION MAP



SOILS TYPES

- 912 A1 FULTON SILT LOAM
- 913 C2 LUCAS SILT LOAM
- 642 A1 RANDOLPH SILT LOAM
- G42 A1 MILTON SILT LOAM
- G289 A0 HOYTVILLE CLAY
- 9126 A1 B1 FULTON SILTY CLAY LOAM
- 9136 B2 C2 LUCAS SILTY CLAY LOAM
- 9176 A0 TOLEDO SILTY CLAY LOAM (7 PROFILE)
- 9186 A0 TOLEDO SILTY CLAY LOAM
- 9188 A0 TOLEDO SILTY CLAY

SURVEYED: OCTOBER 18, 19, & 21 1977

BY: DOYLE SOMMER
MICHAEL SUHROW
CAROL MOORE
TOM AMBROSE
MICHAEL GARGAC

APPROVED BY

John A. Pappas 8/11/78
COUNTY ENGINEER

Allen Twp Trustees

ALLEN TWP TRUSTEES

Clay Twp Trustees

CLAY TWP TRUSTEES

OUTLET DITCH IMPROVEMENT # 120
OPFER-LENIZ RC GROUP DITCH # 120
SEC. 14 ALLEN TWP SEC. 23 CLAY TWP
OTTAWA COUNTY

U. S. DEPARTMENT OF AGRICULTURE
SOIL CONSERVATION SERVICE

Designed by *D. Stetson* Date *1/22/78*
Drawn by *M. E. R. B. R. B.* Title *Outlet Ditch & Group*
Checked by *Mike Martin* 2/18/78
Sheet No. *1* of *1* Drawing No. *39-01-383-78-17*