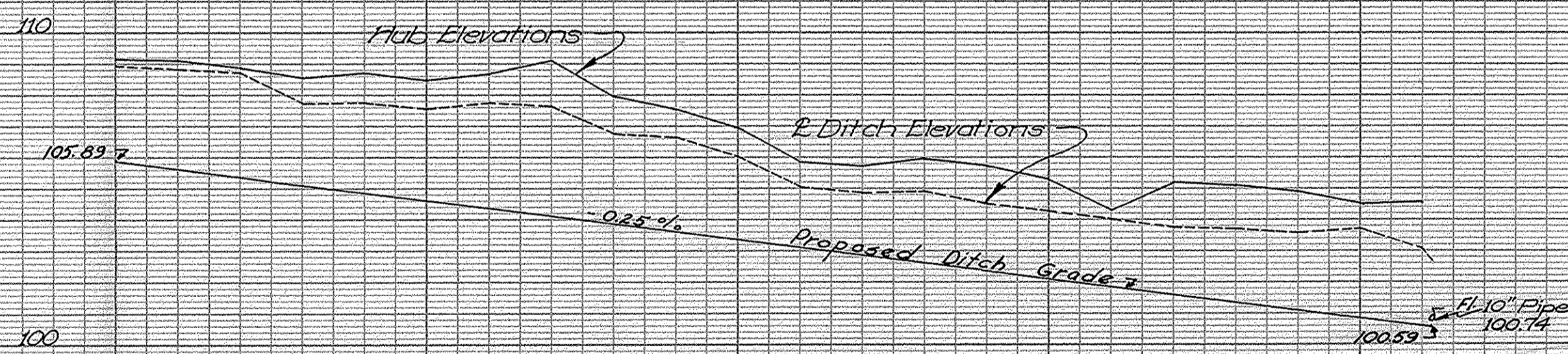


MYLANDER DITCH SALEM TWP, OTTAWA COUNTY 1959

B.M. Sta. 2+15
Spike N. Side Oak Tree
Ele. 110.00

B.M. Sta. 20+80
Spike W. Ash N.
Ele. 105.90



Cut From Hub
Station

0	3.29
1	3.50
2	3.57
3	3.43
4	3.82
5	3.84
6	4.27
7	4.99
8	4.10
9	3.93
10	3.48
11	2.68
12	2.82
13	3.32
14	3.34
15	3.17
16	2.39
17	3.56
18	3.71
19	3.73
20	3.52
21	3.93

CU 1' 1/2' below Ft.