

# MYLANDER

# DITCH

GEORGE

MYLANDER

PETITION

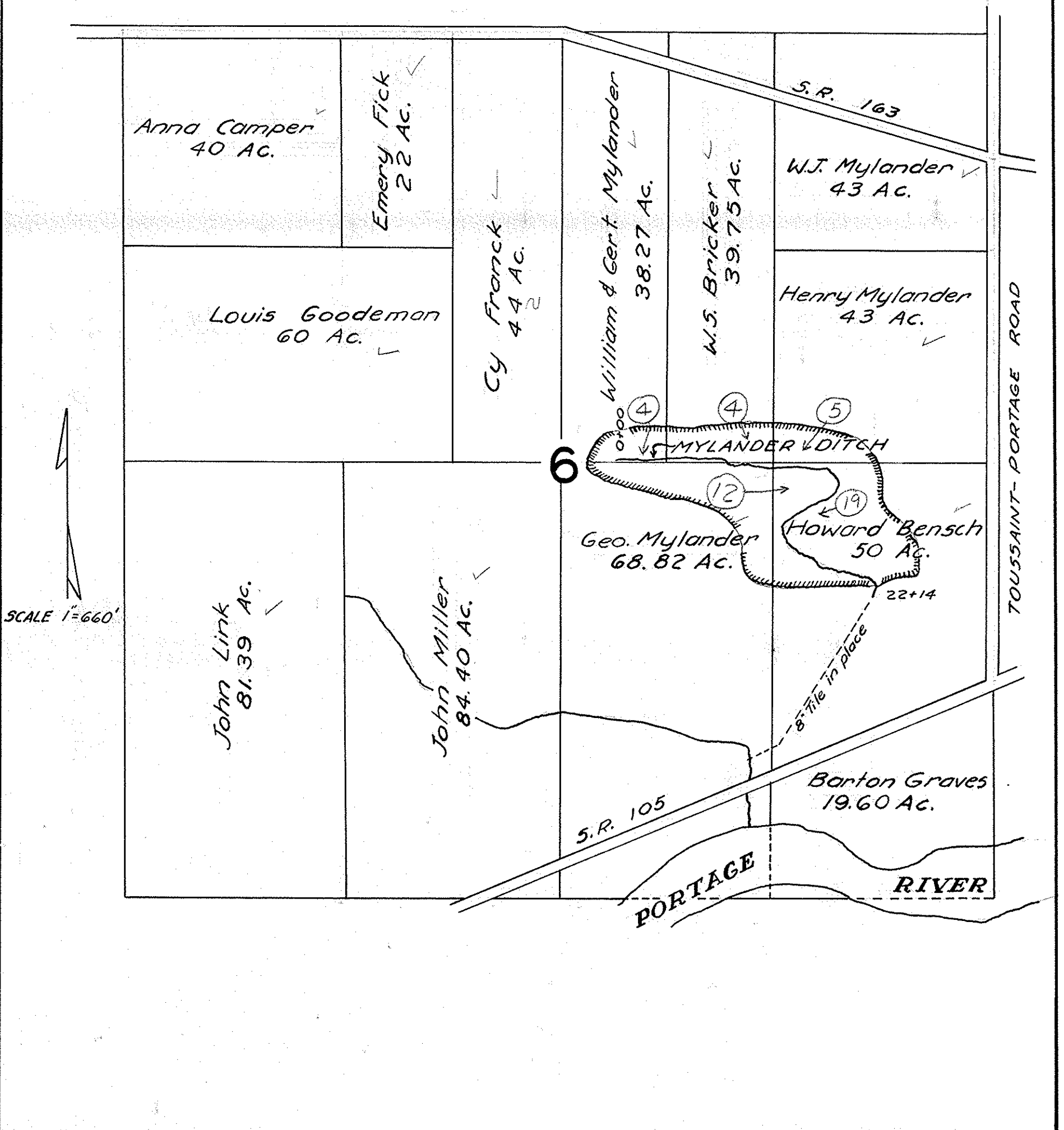
SALEM

TWP

OTTAWA

COUNTY

1950



# MYLANDER DITCH

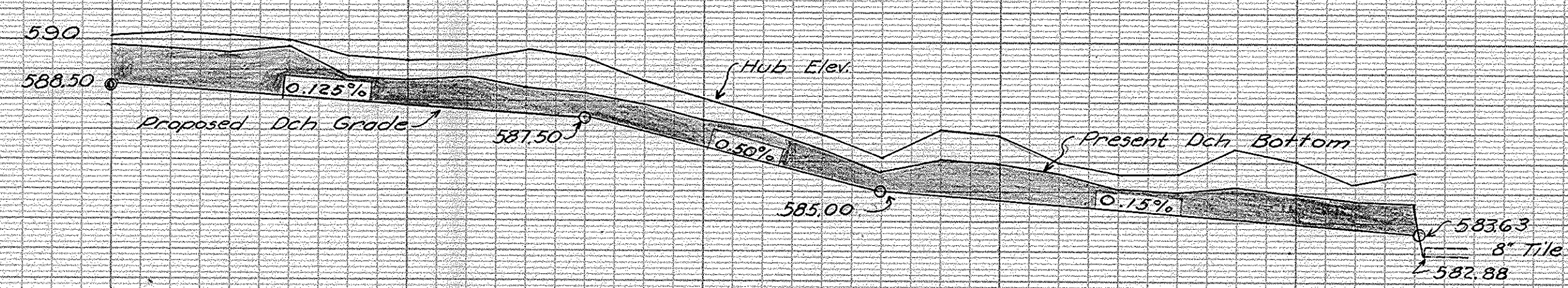
## GEORGE MY MYLANDER PETITION

### SALEM TOWNSHIP OTTAWA COUNTY

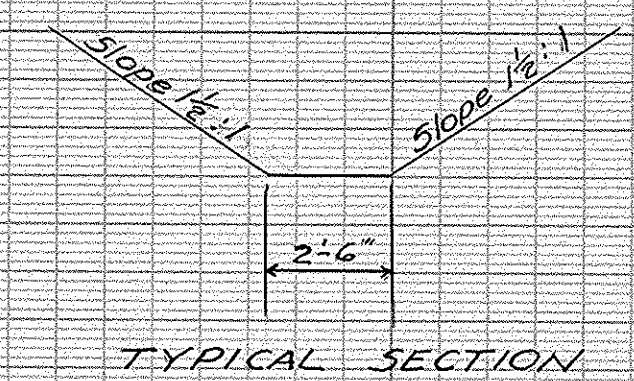
#### 1950

B.M. Elev. 591.16  
Spike in 12" Oak  
Rt. @ Station 1+50

B.M. Elev. 587.34  
R.R. Spike in 18" Elm  
Lt. @ Sta. 22+00



WILLIAM & GERT MYLANDER 3+45  
 W.S. BRICKER  
 GEORGE MYLANDER  
 10+05 HENRY MYLANDER 11+60  
 HOWARD BENSCH  
 HOWARD BENSCH



Cubic Yards	26	26	26	24	19	20	26	31	31	30	28	20	15	22	31	24	15	20	24	19	17	15	1	TOTAL
Top Width	6.8	7.5	7.8	7.5	6.8	7.0	7.7	8.0	8.8	8.0	7.7	6.5	6.0	5.8	8.5	8.5	7.0	5.5	8.5	7.0	6.8	6.5	6.3	510
Bottom Width	2 1/2																							
Cut from Hub	1.64	1.86	1.92	1.76	1.47	1.51	1.62	2.09	1.92	1.70	1.57	1.54	1.34	1.14	2.27	2.10	1.36	1.19	2.12	2.39	2.09	1.98	2.07	
Station	0	1	2	3	4	5	6	7	8	9	10	11	12	13	14	15	16	17	18	19	20	21	22	

**MYLANDER DITCH**  
 GEORGE MYLANDER PETITION  
 SALEM TWP. OTTAWA COUNTY  
 1950

