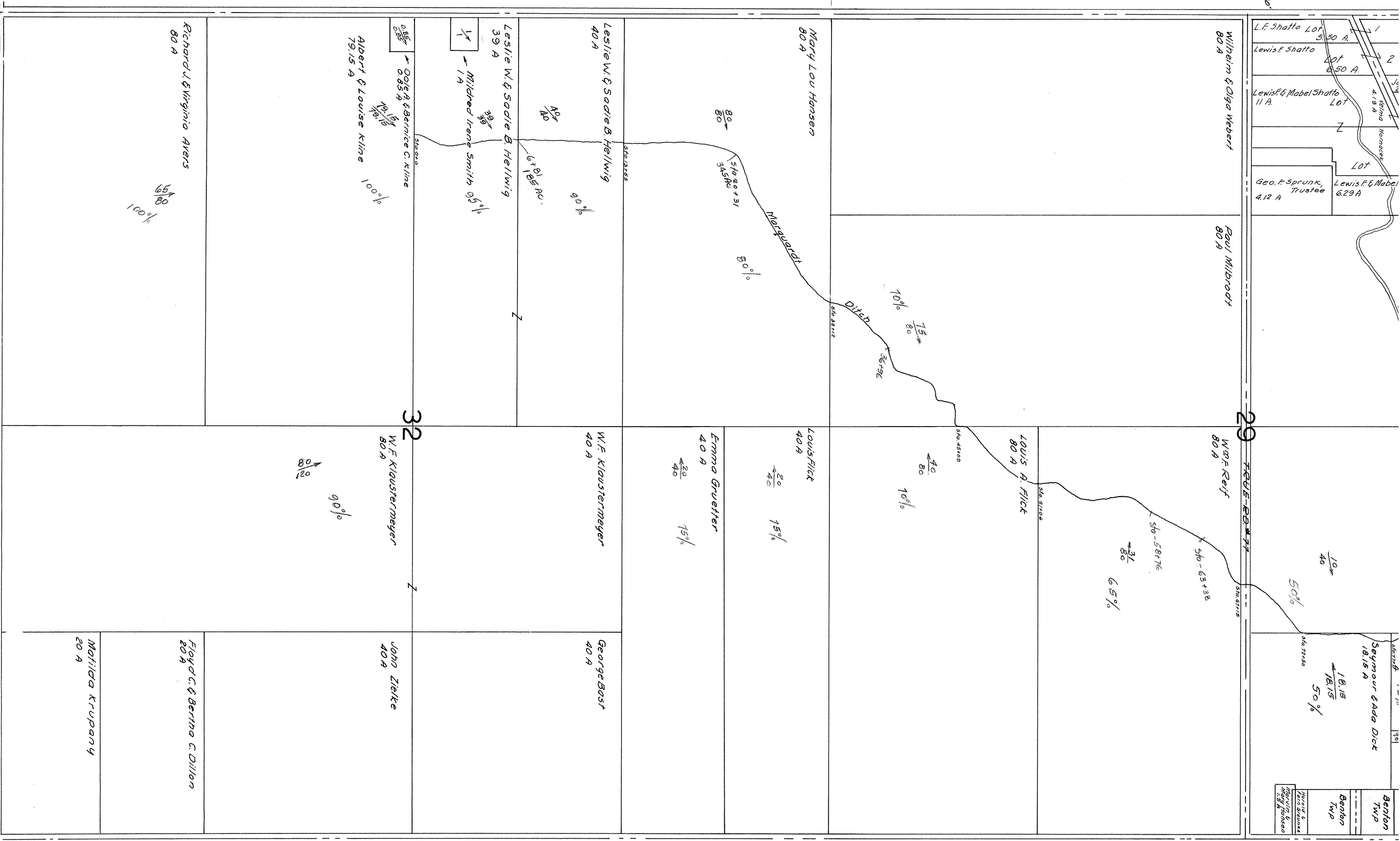


# MARQUARDT DITCH - 1963

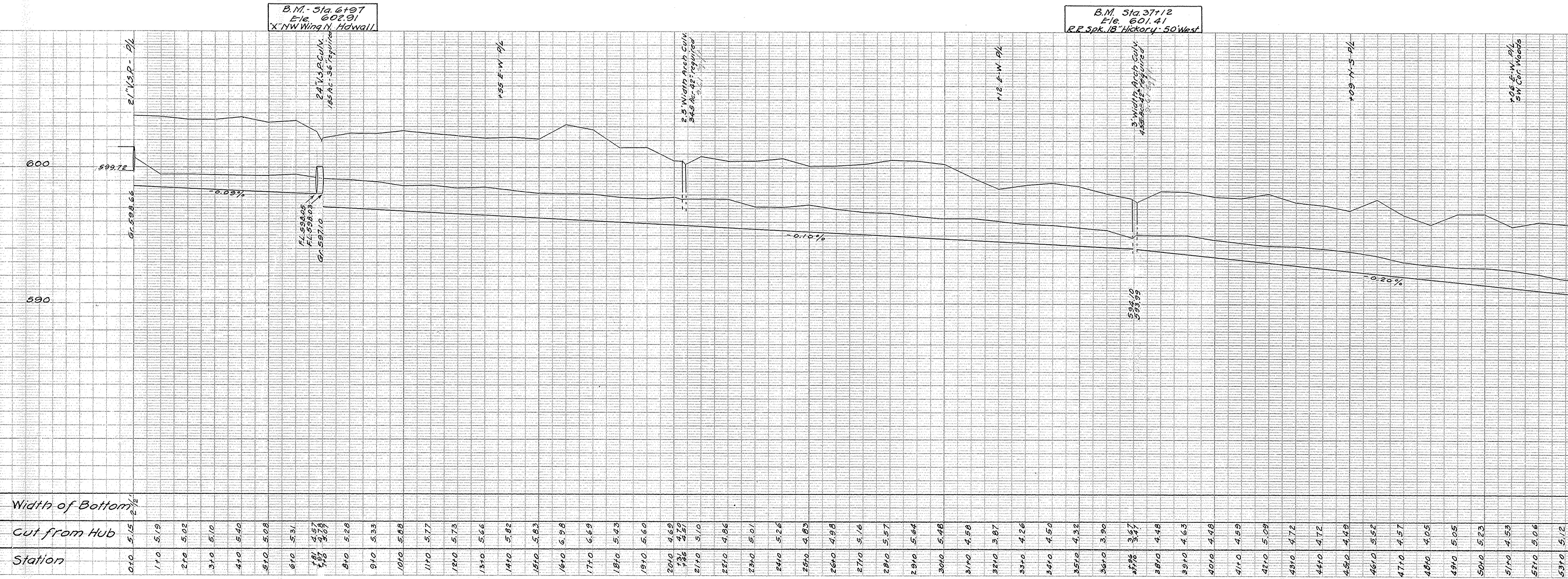
## BENTON TWP. SEC. 29-32

Scale 1" = 300'



Benton  
Twp  
Benton  
Twp  
Benton  
Twp  
Benton  
Twp  
Benton  
Twp

# MARQUARDT DITCH BENTON TWP. SEC. 29-32 OTTAWA COUNTY 1963



Station	Cut from Hub	Width of Bottom
0+00	5.15	2 1/2'
1+00	5.19	
2+00	5.02	
3+00	5.10	
4+00	5.40	
5+00	5.08	
6+00	5.31	
7+00	4.57	
8+00	5.09	
9+00	5.28	
10+00	5.33	
11+00	5.88	
12+00	5.77	
13+00	5.73	
14+00	5.66	
15+00	5.82	
16+00	5.83	
17+00	6.98	
18+00	6.69	
19+00	5.43	
20+00	5.60	
21+00	4.69	
22+00	4.59	
23+00	5.10	
24+00	4.86	
25+00	5.01	
26+00	5.26	
27+00	4.83	
28+00	4.98	
29+00	5.16	
30+00	5.57	
31+00	5.64	
32+00	4.78	
33+00	4.58	
34+00	3.87	
35+00	4.26	
36+00	4.50	
37+00	4.32	
38+00	3.90	
39+00	3.47	
40+00	4.48	
41+00	4.63	
42+00	4.48	
43+00	4.59	
44+00	5.09	
45+00	4.72	
46+00	4.72	
47+00	4.49	
48+00	5.52	
49+00	4.57	
50+00	4.05	
51+00	5.05	
52+00	5.23	
53+00	4.53	
54+00	5.06	
55+00	5.12	

# MARQUARDT DITCH BENTON TWP. SEC. 29-32 OTTAWA COUNTY 1963

Ditch Book 139-Pg. 40-45

B.M. Sta. 67+15  
Elev. - 594.14  
"X" Center South Hawaii

B.M. Sta. 88+70  
Elev. - 589.41  
R.R. Spk. Cottonwood East

B.M. Sta. 93+45  
Elev. - 587.15  
"X" SW Cor. 2nd Step  
E. Backwall South

B.M. Sta. 94+40  
USC 895 - Elev. 597.49  
River Top W. Backwall  
N.Y.C. R.R. Bridge #13  
Over Toussaint Creek

Elev. Plank Top Culv.  
Sta. 60+40 required  
74.56

S. Width Conc. Culv. - T.E.U.P. #2  
(4' x 5' Box Culv.)  
580 Ac. - 48' required  
74.56

550 N. S. Pl.  
South edge woods - West side

111 Pl. - East

15 Plank Top Culv.  
Sta. 87+40 required  
74.56

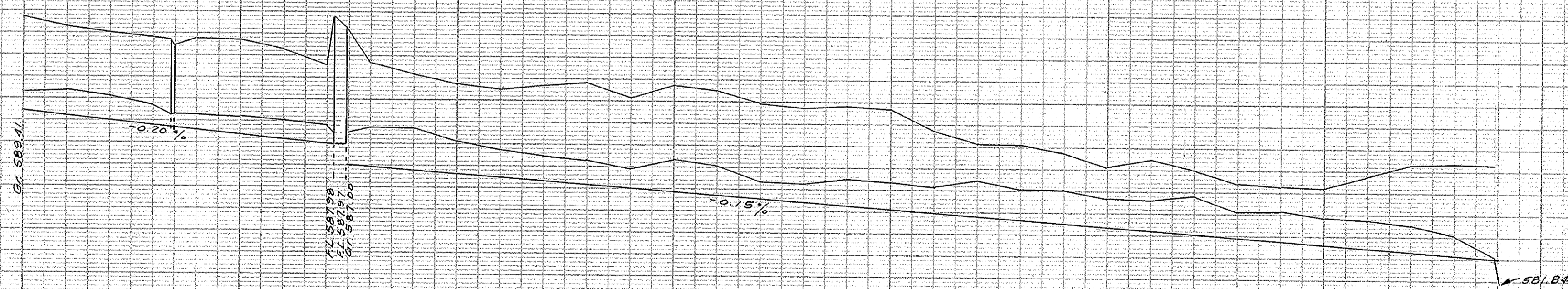
Turns West along N.Y.C.R.R.

Toussaint Creek

600

590

580



Note: -  
New ditch - Sta. 85+0 - 87+0 and Sta. 93+0 - 93+03  
To be Relocated as directed by the County Engineer.

Station	Cut from Hub	Width of Bottom
60+0	4.35	2 1/2
61+0	4.09	
62+0	4.00	
63+0	4.00	
64+0	3.97	
65+0	4.15	
66+0	4.28	
67+0	4.08	
68+0	4.11	
69+0	4.13	
70+0	4.05	
71+0	4.35	
72+0	4.64	
73+0	4.14	
74+0	4.63	
75+0	4.76	
76+0	4.37	
77+0	4.35	
78+0	4.56	
79+0	4.54	
80+0	3.74	
81+0	3.35	
82+0	3.46	
83+0	3.22	
84+0	2.75	
85+0	3.25	
86+0	2.93	
87+0	2.18	
88+0	2.18	
89+0	2.58	
90+0	3.29	
91+0	3.96	
92+0	4.20	
93+0	4.29	
93+03	2 1/2	