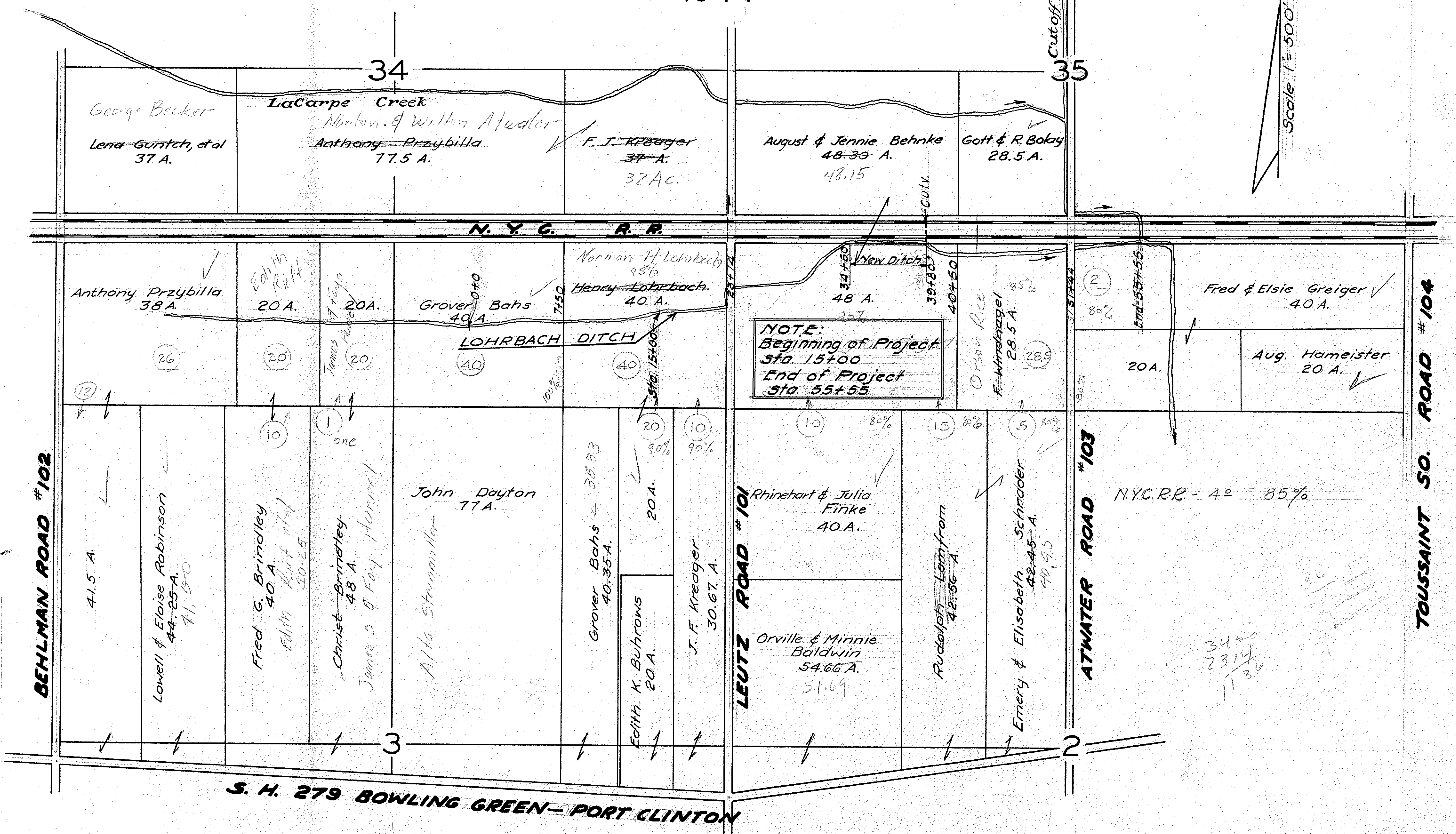
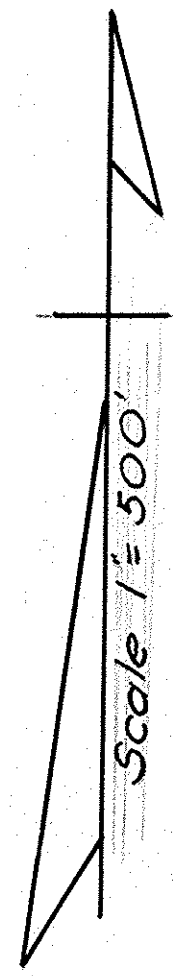


LOHRBACH DITCH

SALEM TOWNSHIP — OTTAWA COUNTY

1944



NOTE:
Beginning of Project
Sta. 15+00
End of Project
Sta. 55+55

34.50
23.14
11.36

LOHRBACH DITCH

SALEM TOWNSHIP—OTTAWA COUNTY

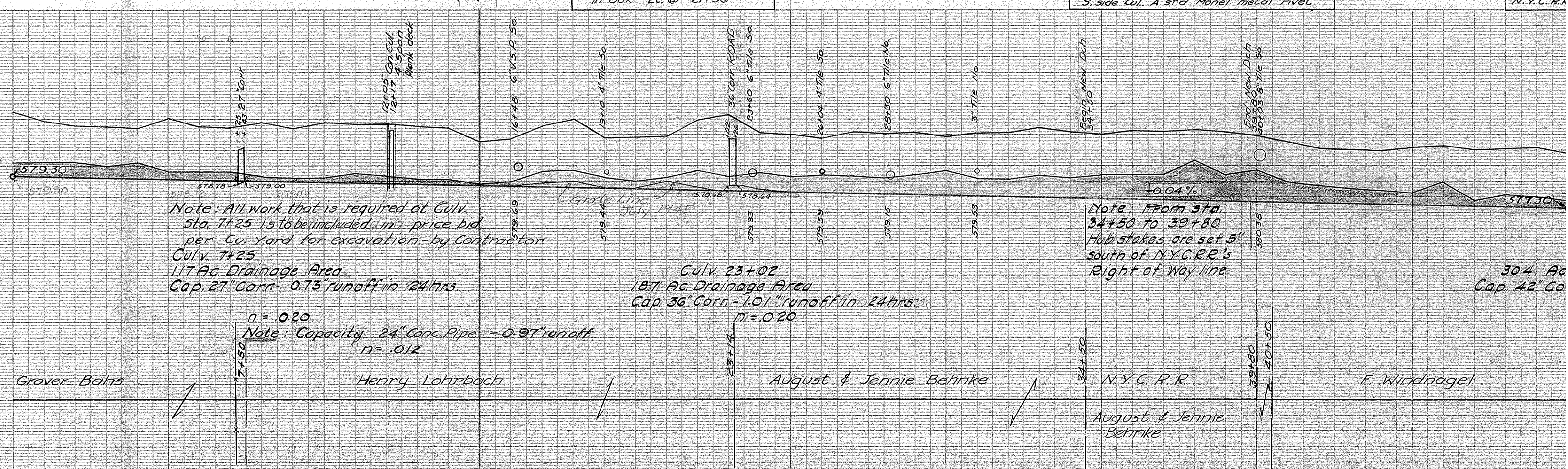
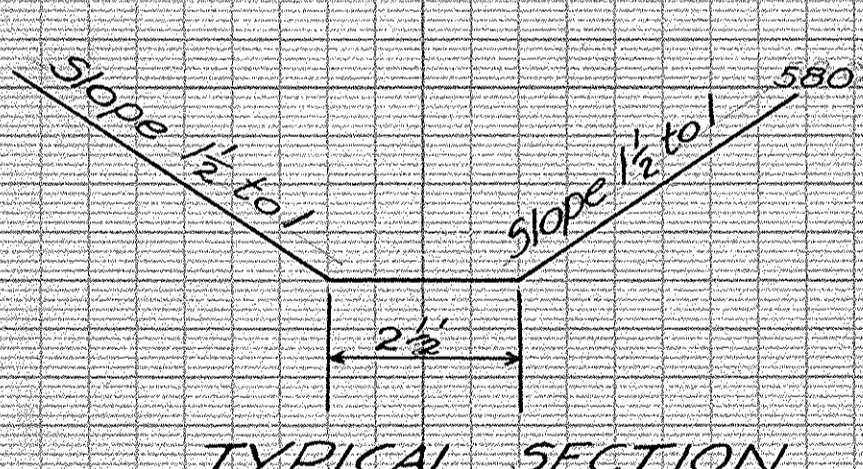
1944

NOTE:
Beginning of Project
Sta. 15+00

B.M. Elev. 582.42 R.R. Spike
in Oak Lt. @ 21+50

B.M. Elev. 585.07 R.V. 273 about 37
rails E. M. 17 @ a conc. Culvert E. end
S. side Cul. A std. Monel metal rivet.

B.M. Elev.
Cor. Copin
N.Y.C.R.R.



Note: All work that is required at Culv.
Sta. 7+25 is to be included in price bid
per Cu. Yard for excavation - by Contractor
Culv. 7+25
117 Ac. Drainage Area
Cap. 27" Corr. - 0.13' runoff in 24 hrs.

Culv. 23+02
187 Ac. Drainage Area
Cap. 36" Corr. - 1.01' runoff in 24 hrs.

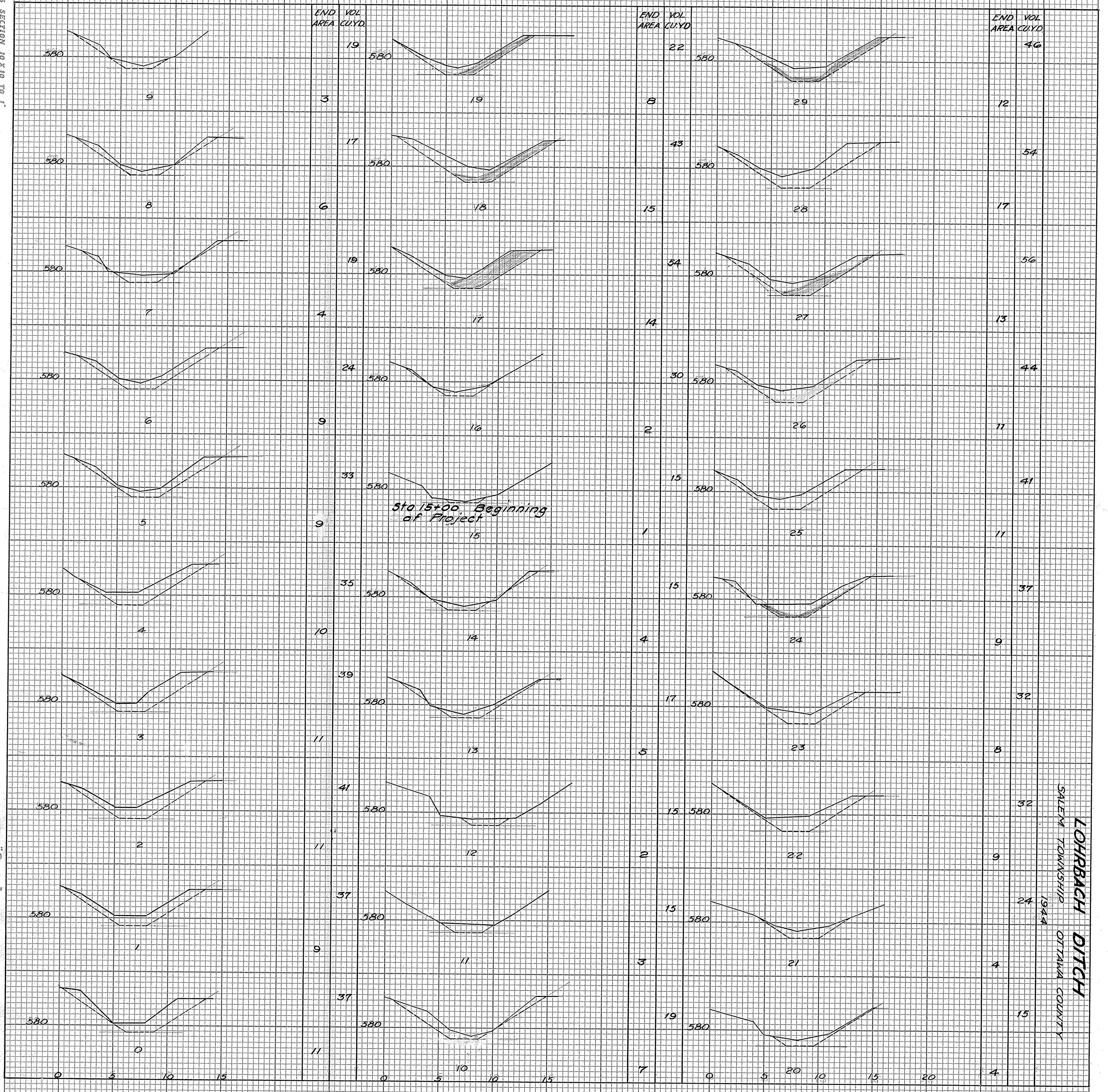
Note: From Sta.
34+50 to 39+80
Hub stakes are set 5'
south of N.Y.C.R.R.'s
Right of Way line.

n = .020
Note: Capacity 24" Conc. Pipe - 0.97' runoff
n = .012

No. of Station	Cut from Hub	Width of Bottom	Width of Top	No. of Cu. Yards
0	4.14	2 1/2	13.3	
1	3.66	2 1/2	13.4	37
2	3.35		13.3	37
3	3.35		13.5	41
4	3.26		13.4	39
5	3.94		14.6	35
6	3.48		14.3	33
7	3.39		14.5	24
8	3.79		14.0	19
9	3.44		15.0	17
10	3.87		15.0	19
11	3.78			19
12	3.89			15
13	3.75		14.1	15
14	3.67		13.8	17
15	2.82		15	15
16	3.05		14.1	15
17	3.87		13.9	30
18	4.31		14.6	54
19	3.23		13.1	43
20	3.29		2.2	22
21	3.41		15	15
22	4.47		14.2	24
23	4.84		14.1	32
24	3.68		13.7	32
25	3.66		13.8	37
26	3.48		13.5	41
27	3.91		13.8	44
28	3.84		13.5	56
29	3.95		14.5	54
30	3.71		13.3	46
31	4.03		14.6	43
32	4.05		15.0	35
33	4.45		15.6	41
34	4.12		12.6	45
35	4.09			54
36	4.38			74
37	4.35			76
38	4.45		13.4	80
39	4.40		13.0	70
40	4.16		13.0	54
41	3.84			44
42	3.43		14.5	35
43	3.40		12.0	26
44	3.39		14.0	24
45	3.68		13.8	24
46	3.80		13.5	37
47	3.56		13.5	35
48	3.67		13.5	17
49	3.81		12.8	15
50	3.35		9.8	15

Rev. May

"Specie" CROSS SECTION 10 X 10 TO 1"
 H. K. ELLIOTT CO.
 MADE IN U.S.A.

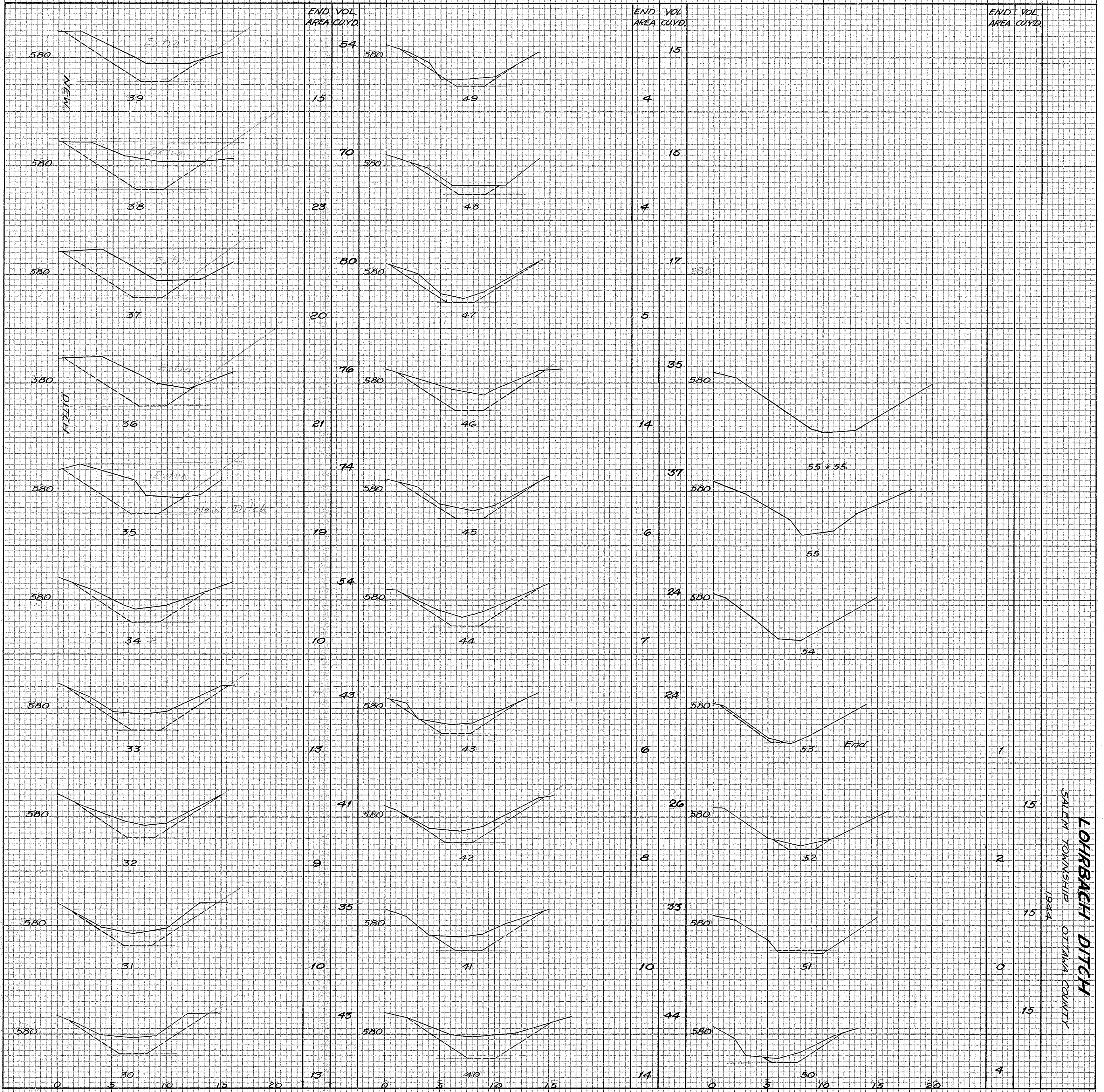


LOHRBACH DITCH
 SALEM TOWNSHIP
 OTTAWA COUNTY
 1944

"Specie" CROSS SECTION 10 X 10 TO 1"
 H. K. ELLIOTT CO.
 MADE IN U.S.A.

1-4-44

"Grade" CROSS SECTION 10X10 TO 1"
B. K. LIGHT CO.
MADE IN U.S.A.



TOTAL VOL. C.Y. 1812
REV. MAY 2, 1945 - 1430

LOHRBACH DITCH
SALEM TOWNSHIP
1944
OTAWA COUNTY