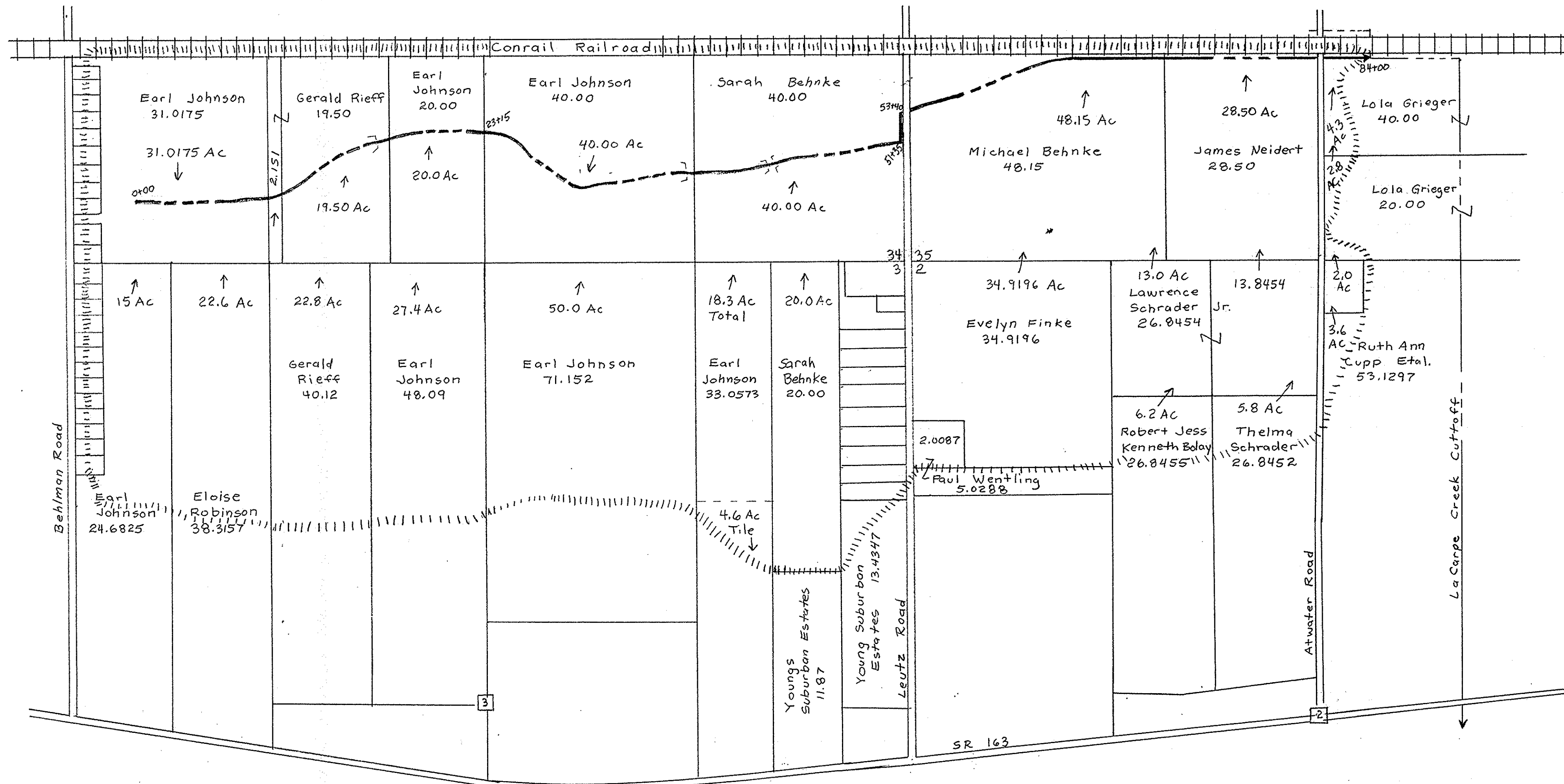


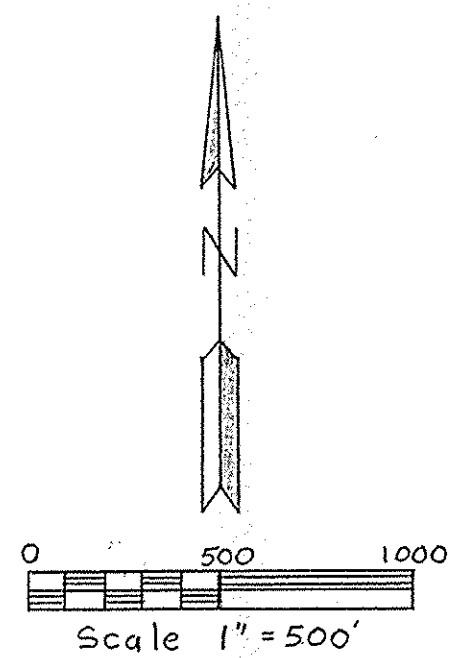
*NOTE: RECEIVED 8/31/98 - ORIGINALS ON FILE AT THE SCS OFFICE. PLAN SHOWS THE AS-BUILT GRADES.
MCB

LOHRBACH DITCH

PROJECT # 96 - FILE 2.253



- LEGEND**
- ROAD
 - FENCE
 - PROPERTY LINE
 - EXISTING TILE
 - PROPOSED TILE
 - STATIONING
 - BENCHMARK
 - OPEN DITCH
 - SURFACE DRAINWAY
 - CONTOUR INTERVAL
 - SOIL TYPE
 - STREAM
 - DIKE
 - RAILROAD
 - WATERSHED



UNDERGROUND UTILITIES AT EXCAVATION SITE				
Name	Address	Phone No.	Member OUPS	Limited Basis Participants
960529	Utility 529042034			
ATT	North Side RR		X	
World Comm	North Side RR		X	

NOTE TO EXCAVATOR

Excavator must notify all utilities at least 48 hours and not more than 10 days prior to the planned commencement of excavation.

- Member utilities will be contacted by calling OUPS (1-800-362-2764).
- Each Limited Basis Participant and members of the Ohio Oil and Gas Association will be contacted by the excavator using the telephone number provided.

Robert C. Stearns 4-17-97
OTTAWA COUNTY ENGINEER

Michael R. Gargac
CONSTRUCTION APPROVED BY

JOB CLASS II

LOHRBACH DITCH
OUTLET DITCH IMPROVEMENT
SALEM TOWNSHIP
OTTAWA COUNTY OHIO

**U. S. DEPARTMENT OF AGRICULTURE
SOIL CONSERVATION SERVICE**

Date: 4/96
Designed: Michael Gargac
Drawn: Michael Gargac
Checked: *Def. Sonner*

Approved: *Robert C. Stearns*
Title: *Civil Eng. Supv.*

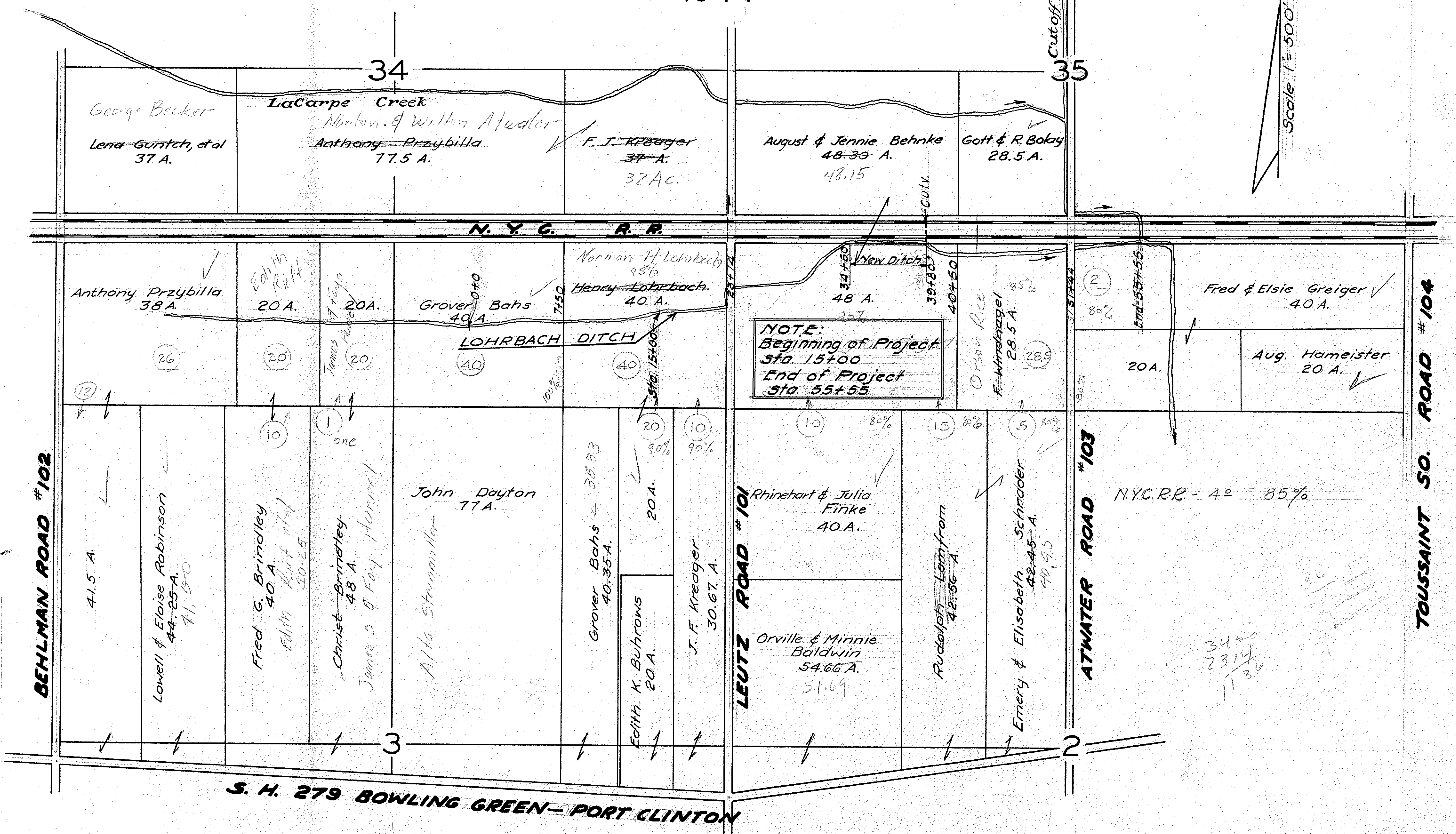
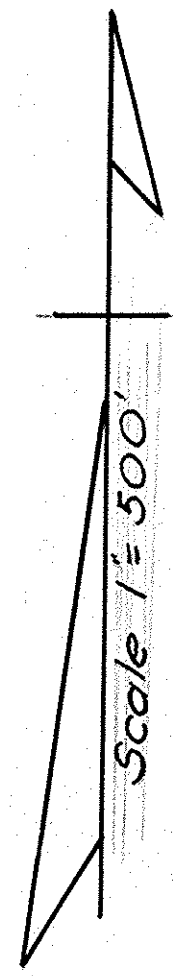
Title: _____
Sheet: No. 1 of 6
Drawing No.: 39-01-383-96-09

Revised: 970408/970417/970910

LOHRBACH DITCH

SALEM TOWNSHIP — OTTAWA COUNTY

1944



NOTE:
 Beginning of Project
 Sta. 15+00
 End of Project
 Sta. 55+55

34.50
 23.14
 11.36