

# BANKY DITCH

## BENTON TOWNSHIP OTTAWA COUNTY

1944

**PROPERTY OWNERS - ROCKY RIDGE**

Bertie W. Mills	Block 1	Lot 1
Orville Below	"	" 2
Wanda Fillmore Meyers	"	" 3 N 52'
Gust Fillmore	"	" 4 N 5.14' of 3
Harvey & Anna Wittman	"	" 4, 30x165
"	"	" 5
Gust Fillmore	Block 2	Lots 1 & 14
Harry Garris	"	" 2 & 13
Leah Strasscher	"	" 3 & 12
Viola Neander	"	Lots 4 to 11 (inc.)
Grover L. Meyer	Block 3	" 1 to 3 (inc.)
Otto & Hilda Lieske	"	" 4
William Wright	"	Lots 5 & 6
Ira & Ethel Barnes	"	" 7 to 10 (inc.)
Bertha Wendt	Block 4	Lots 1 & 2
German Lutheran Ch.	"	" 3, 4 & 5
Richard Barnes	"	" 6
Minnie Rief	"	Lot 7
D. Fillmore	"	" 8
Edmea Boyer	"	" 9
Paul Schuster	"	" 10

**MASON'S RESERVE-OUTLOTS**

Edmea Boyer	Lot 1
Bertha Wendt	Lots 2, 3, 13E, pt, 19, 20 pt.
Geo. & Olive Chiarelli	Lots 4 to 7 (inc.)
Ottawa County Co-op Co.	Lots 8 to 11 (inc.), 20 N.E. pt
Sadie & Roy McNutt	Lots 12, 13 Wpt, 15, 16

**MASON'S ADDITION**

John Reaser	Block 1	Lots 1 & 2
Steve & Esther Demeter	"	" 3 to 6 (inc.)
Noamio Tabbert	"	" 7
John & Marguerite Lehman	"	" 8 & 9
Lyman Sprague	Block 2	Lots 1 & 2
Lewis Newbury	"	" 3 & 4
Elisabeth Wohlfeil	"	" 5
John Lehman	"	" 6 to 9 (inc.)
Sarah Wright	Block 3	O.L. 1
Carl Whittier	"	O.L. 2 & 3

**FOOTE'S ADDITION**

J.W. Conkey	Block 1	Lots 1 to 7 (inc.)
Karl G. Koob	"	Lots 1 to 4 (inc.)
Sadie & Roy McNutt	"	" 5, 6, 7
Fred Dressler	"	" 8-9

**CUTLER'S ADDITION**

Willis Knox	Block 1	Lots 1 & 2
Otto & Cora Knapp	Lots 1 1/2, 2, 3, 5, 4, 7 to 15 (inc.)	
"	Block 2	Lots 1 to 16 (inc.)
William G. Schlipf	"	Lots 1 to 8 (inc.)
"	"	Lots 9 to 16 (inc.)
Clarence & Eileen Pfaff	"	(1 & 3) 5 1/2
"	"	" 2, 4
William G. Schlipf	"	" 5 to 16 (inc.)
Bertha L. Wendt	Block 5	" 1 to 16 (inc.)

**BELL'S 1ST ADDITION**

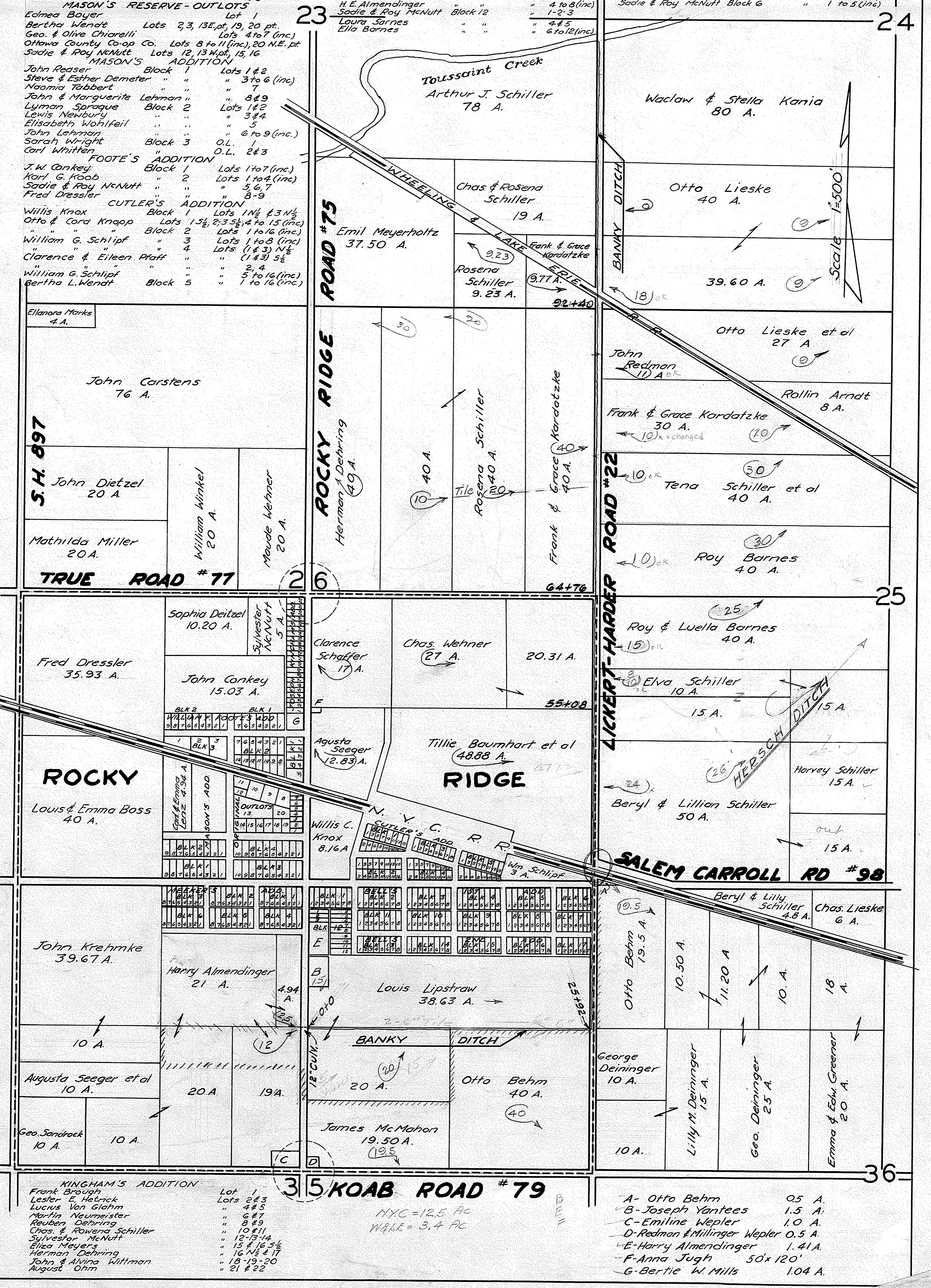
Otto G. & Cora Knapp	Block 1	Lots 1, 2, 3
Wm. Lipstraw	"	" 4
Laura Sarnes	"	" 5 to 8 (inc.)
Harvey T. Schlipf	"	" 1, 2, 3 W 25
Margaret Hansen	"	" 3E, 25, 4, 5
Lena Almendinger	"	" 6 - 7 W 1/2
S.R. Curran	"	" 7E - 8
Eva & Frank Bastubee	Block 3	" 1 to 5 W 1/2 (inc.)
Paul Schuster	"	" 5E, 1 to 8 (inc.)
Bertha L. Wendt	Block 4	Lots 1 to 6 (inc.)
William C. Schlipf	"	" 7-8
"	Block 5	" 1 to 4 (inc.)
Elisabeth Bibert	"	" 5
Jacob Dibert	"	" 6, 7, 8
"	Block 6	Lots 1, 500'
Chas. & Bell Anders	"	" 1, 1100'
Chas. Norwalk	Blk 6, Lots 2 to 7, Blk 7, 1 to 7, Blk 8, 1 to 8 (inc.)	
Chas. Felder	Block 9	Lots 1 to 8 (inc.)
Frank Bastubee	Block 10	Lots 1 to 8 (inc.)
Mildred Hacker	Block 11	Lots 1-2-3
H.E. Almendinger	"	" 4 to 8 (inc.)
Sadie & Roy McNutt	Block 12	" 1-2-3
Laura Sarnes	"	" 4 & 5
Ella Barnes	"	" 6 to 12 (inc.)

**BELL'S 2ND ADDITION**

Susan Schlipf	Block 13	Lot 1
Laura Sarnes	"	Lot 2
Mildred Hacker	"	Lots 3 to 8 (inc.)
Frank Bastubee	Block 14	" 1 to 8 (inc.)
Charles Felder	"	" 1 to 8 (inc.)
Chas. Norwalk	Blk 16	Lots 1 to 8, Blk 17, 1 to 7 (inc.)

**MEEKER'S ADDITION**

Clayton & Mildred Depner	Block 1	Lots (1 & 2) 5 1/2, 3 1/2 off E. 25'
Ethel Kline	"	" (1 & 2) 1, 2, 3 N 1/2 of E 25'
William Ferstau	Blk 1, Lots 1 to 3, 4, 5, 6, 8, Blk 4, 4 to 8 (inc.)	
Albertine Krenke	Block 1	Lot 7
John & Caroline Camarata	Block 2	Lots 1 & 2
Herman Burmeister	"	Lot 3
George Martin	Blk 2, Lot 4, Blk 5, 1 to 4 (inc.)	
Lillian Bankey	"	Lots 5-6
Mary Masters et al	"	" 7-8
Archie B. Myers	Block 3	" 1, 2, 3
John Kramke	Blk 3, Lots 4 to 8, Blk 6, 6 to 8 (inc.)	
Margida Kaiser et al	Block 4	Lots (1-2-3) 5-50'
William Kaiser	"	" (1-2-3) N-50'
Elma Barnes	Block 5	" 5 to 8 (inc.)
Sadie & Roy McNutt	Block 6	" 1 to 5 (inc.)



**KINGHAM'S ADDITION**

Frank Brough	Lot 1
Lester E. Hebrick	Lots 2 & 3
Lucius Von Glahn	" 4 & 5
Martha Neumerster	" 6 & 7
Reuben Deining	" 8 & 9
Chas. & Rowena Schiller	" 10-11
Sylvester McNutt	" 12-13-14
Eliza Meyers	" 15 & 16 1/2
Herman Dehring	" 16 N 1/2 & 17
John & Alvina Wittman	" 18-19-20
August Ohm	" 21 & 22

- A - Otto Behm 0.5 A.
- B - Joseph Yantees 1.5 A.
- C - Emilene Wepler 1.0 A.
- D - Redman & Millinger Wepler 0.5 A.
- E - Harry Almendinger 1.41 A.
- F - Anna Jugh 50x120'
- G - Bertie W. Mills 1.04 A.

**5 KOAB ROAD # 79**

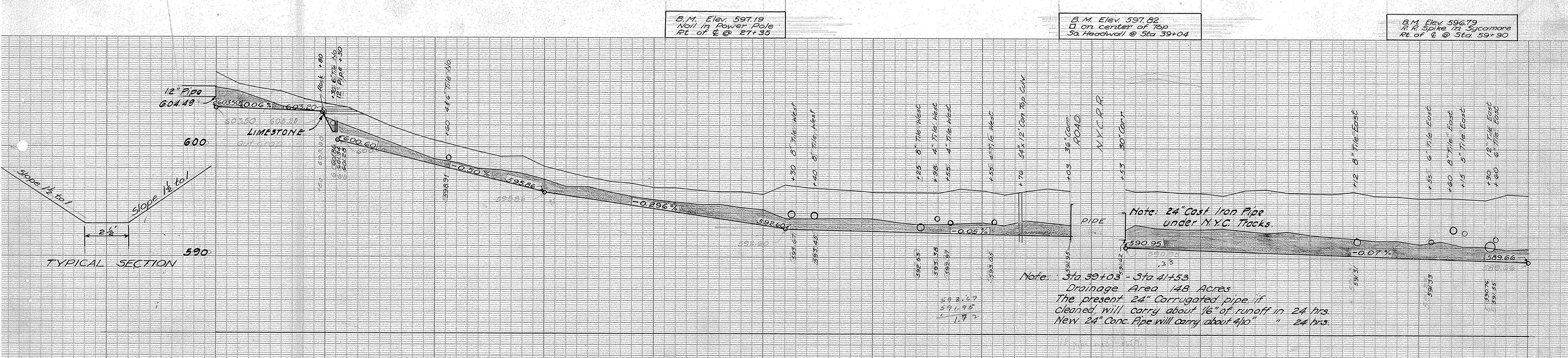
NYC = 12.5 AC  
W&L = 3, 4 AC



# BANKY DITCH

## BENTON TOWNSHIP OTTAWA COUNTY

1944



No. of Station	Cut from Hub	Width of Bottom	Width of Top	No. of Cu. Yards
0	3.30	2 1/2	11.1	52
1	2.33		9.5	32
2	1.98		7.9	15
3	1.72		7.1	15
4	1.04		5.7	15
5	0.68			24
6	3.04	10.9	4.4	56
7	2.84	10.5	2.8	20
8	2.45	9.6		22
9	2.29	9.2		24
10	2.22	8.6		35
11	2.23	8.7		39
12	2.22	9.3		30
13	2.25	9.6		26
14	2.82	10.7		24
15	2.35	10.3		19
16	2.12	8.7		19
17	2.00	8.7		22
18	1.86	8.5		32
19	2.02	8.7		44
20	1.93	9.2		50
21	2.23	9.6		56
22	2.23	10.4		52
23	2.46	11.1		43
24	2.74	11.5		41
25	2.83	12.3		41
26	3.99	14.0		48
27	3.84	13.8		48
28	3.73			37
29	3.71	13.5		30
30	3.53	12.5		32
31	3.54			29
32	3.61			24
33	3.60	13.5		32
34	4.07	13.5		32
35	3.98			35
36	3.66			83
37	4.08	12.5		1
38	4.33	11.0		35
39	4.12	11.1		35
40				35
41				35
42	5.28	17.2		76
43	5.10	17.9		72
44	5.30	17.9		83
45	5.19	17.8		82
46	5.20	16.9		82
47	5.11			76
48	5.61	18.1		72
49	5.73	18.0		78
50	5.50	18.5		89
51	5.56	18.9		93
52	5.60	19.0		85
53	5.88			85
54	5.56	18.6		85
55	5.60	16.7		65
56	5.45	18.6		63
57	5.63	18.6		74
58	5.59	17.2		69
59	5.56	18.8		61
60	6.15	18.6		57
	6.11	19.4		57



# BANKY DITCH

## BENTON TOWNSHIP      OTTAWA COUNTY

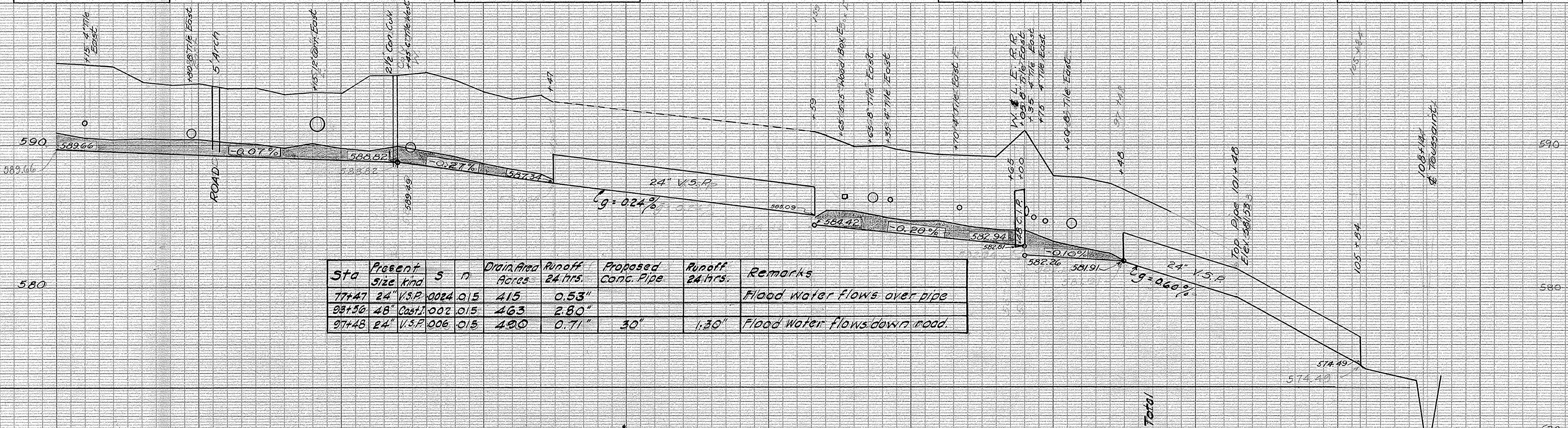
### 1944

B.M. Elev. 595.56  
S.E. Cor. 50. Headwall  
Sta. 64+50

B.M. Elev. 590.14  
South Edge Center  
of Headwall @ Sta 77+48

B.M. Elev. 587.26  
Top Bell 48" C.I.P.  
Under R.R. @ 93+66

B.M. Elev. 582.19  
N.E. Corner 50. East Wing  
on Toussaint Bridge



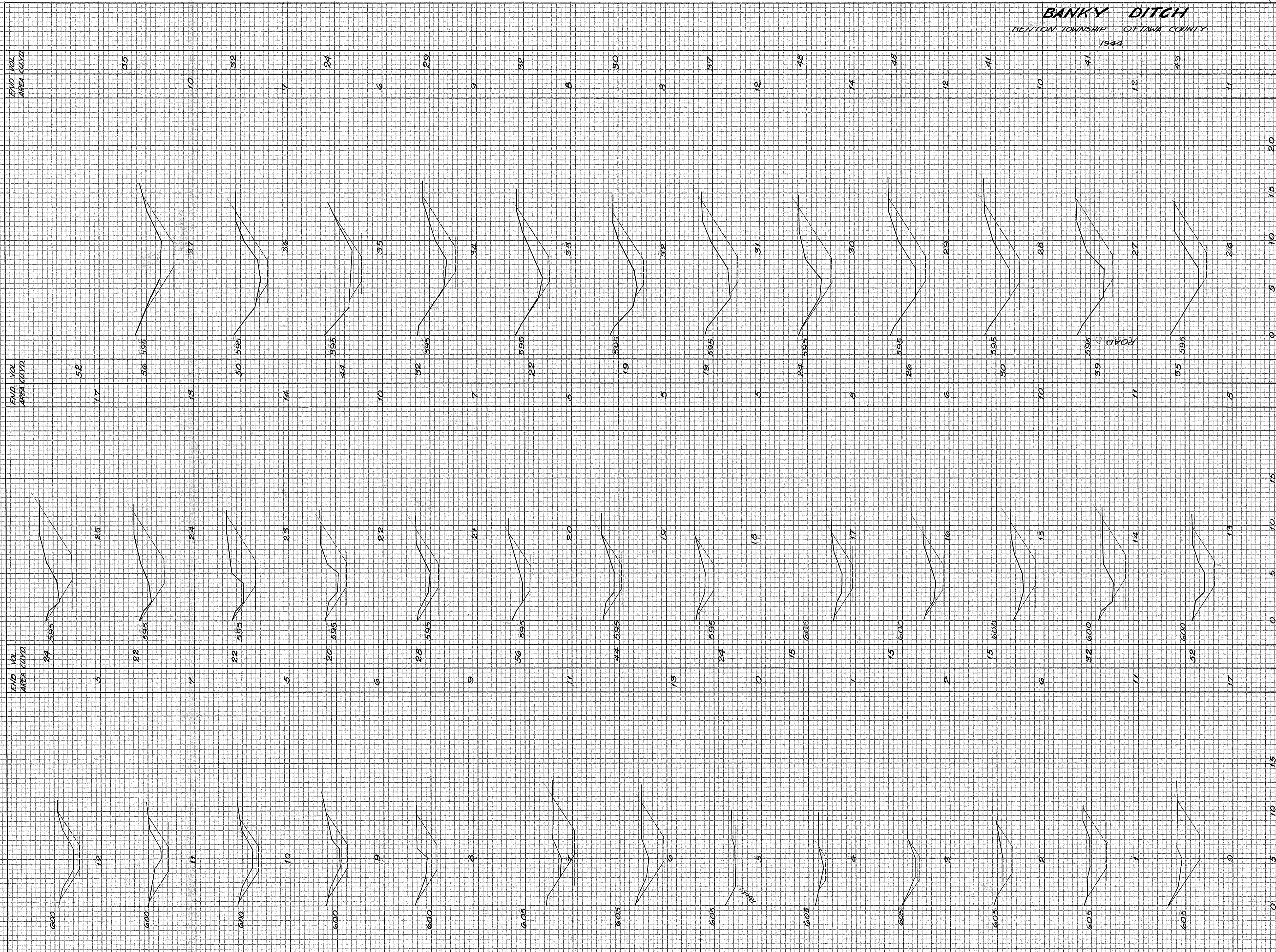
Sta	Present size kind	S	n	Drain Area Acres	Runoff 24 hrs.	Proposed Conc. Pipe	Runoff 24 hrs.	Remarks
77+47	24" V.S.P.	.0024	0.15	415	0.53"			Flood water flows over pipe
88+50	48" Cast I.	.002	0.15	463	2.80"			
97+48	24" V.S.P.	.006	0.15	490	0.71"	30"	1.30"	Flood water flows down road.

No. of Cu. Yards	67	56	50	59	59	43	30	52	30	33	39	50	61	67	50	37	44	17	25	63	48	50	50	48	57	41	39	57	37	7	4044 Total																				
Width of Top			190			153		148		165		220	213	207	180	Where Top Width is not given. See Cross Section.																																			
Width of Bottom	61 1/2																																																		
Cut from Hub	6.11	6.05	6.02	4.98	4.84	5.03	4.66	4.84	4.47	4.67	4.65	5.95	6.05	6.52	6.27	5.74	5.51	6.04	5.71	7.8	7.9	8.0	8.1	8.2	8.5	8.4	8.5	6.48	6.35	5.74	6.03	5.75	5.82	5.88	6.05	6.07	6.75	5.68	5.68	5.36	5.02	2 1/2									
No of Station	60	61	62	63	64	65	66	67	68	69	70	71	72	73	74	75	76	77	78	79	80	81	82	83	84	85	86	87	88	89	90	91	92	93	94	95	96	97	98	99	100	101	102	103	104	105	106	107	108	109	110



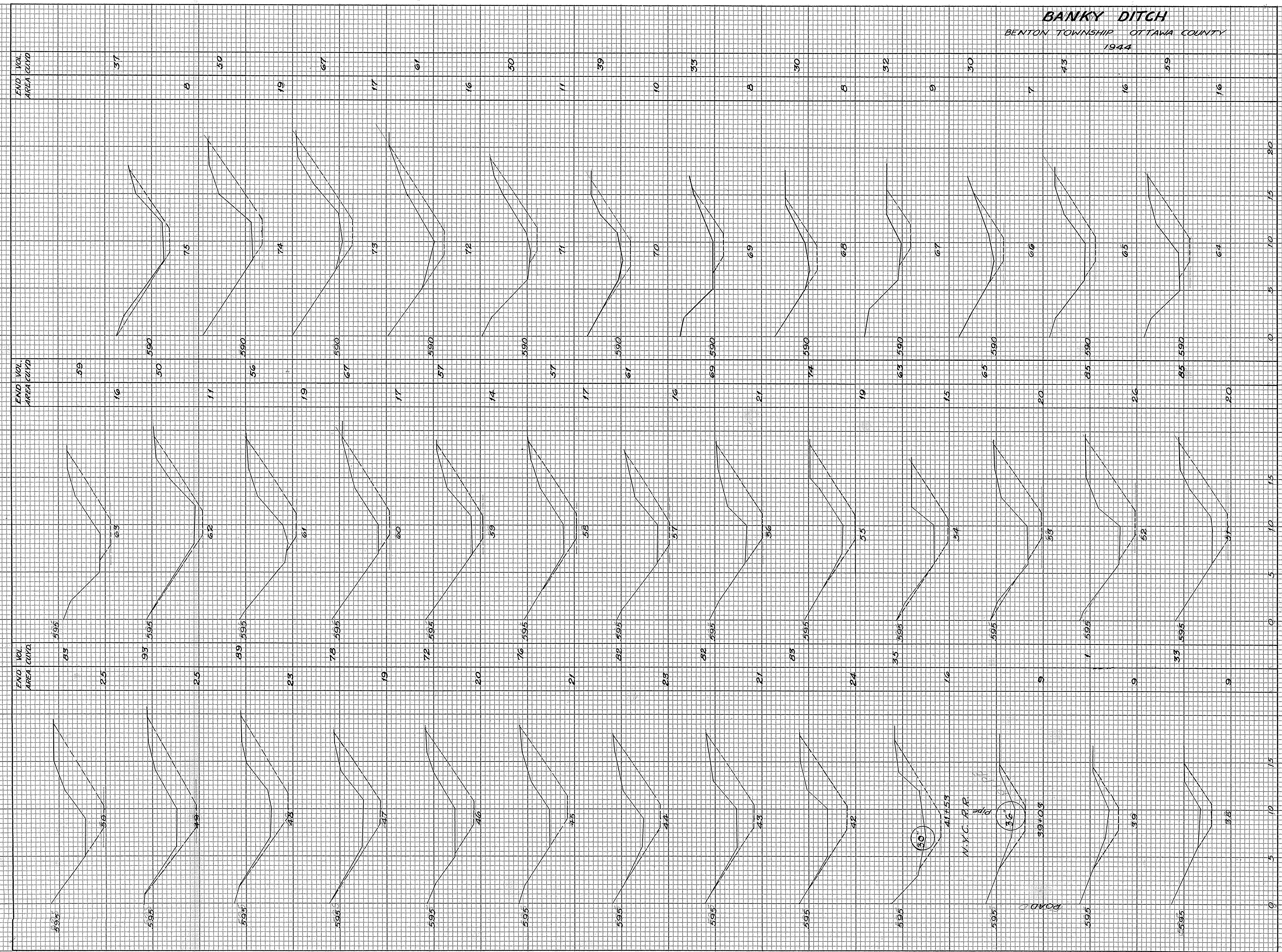
**BANKY DITCH**  
BENTON TOWNSHIP OTTAWA COUNTY

1944





**BANKY DITCH**  
 BENTON TOWNSHIP OTTAWA COUNTY  
 1944



ROAD  
 30' x 0.3'  
 36"  
 N.Y.C. R.R.  
 41' 5.3'



**BANKY DITCH**  
 BENTON TOWNSHIP OTTAWA COUNTY  
 1944

END VOL  
 AREA CU YD

END VOL  
 AREA CU YD

TOTAL VOL CU YDS 404.4

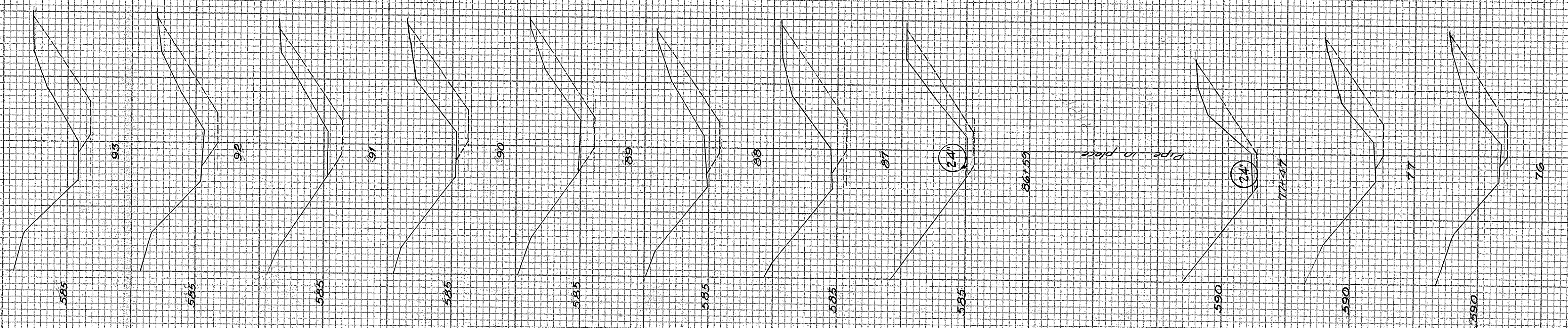
Center Toussaint Creek  
 108+14

24 574.40  
 770 Pipe  
 108+24

Pipe in place

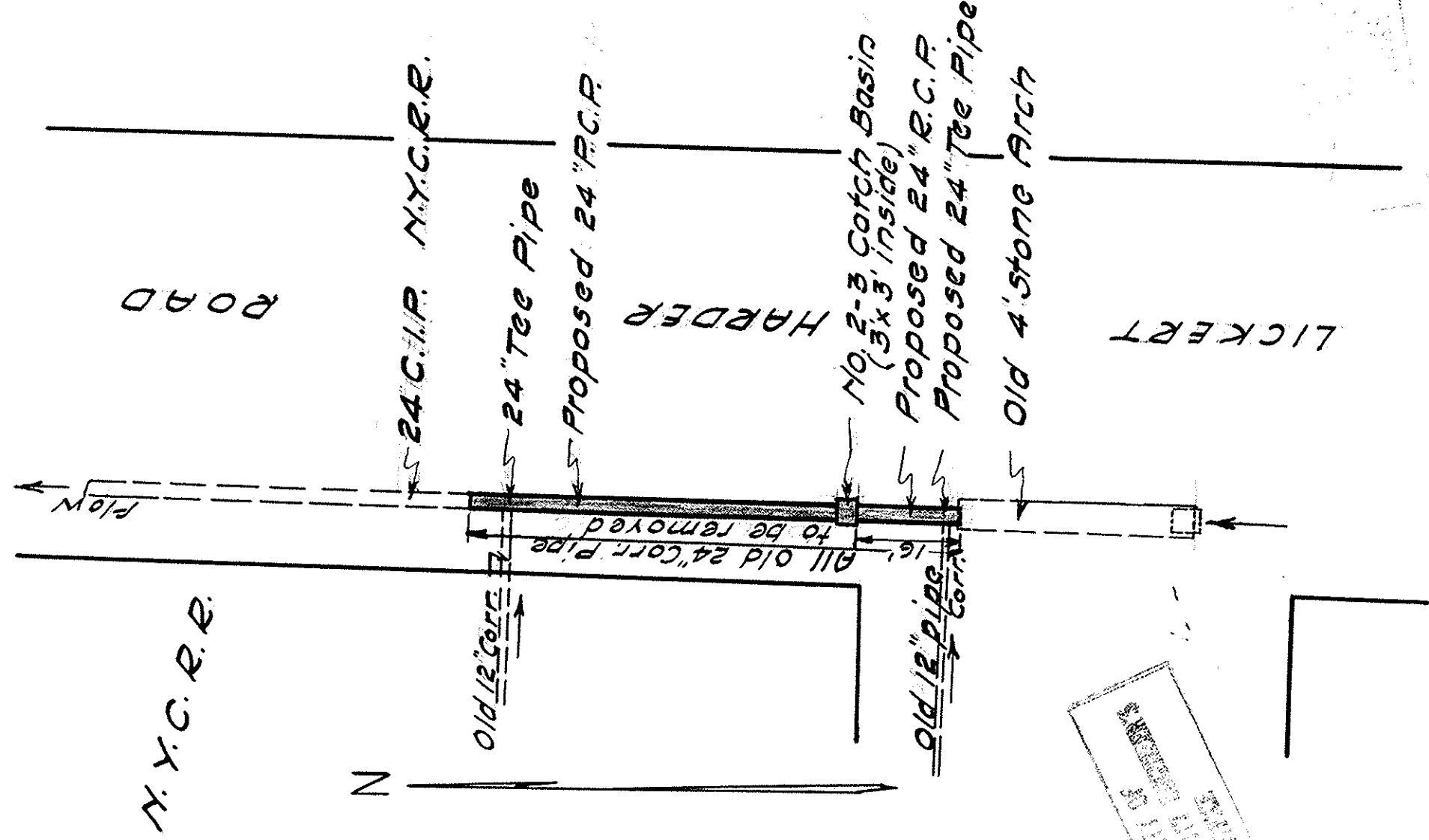
24 26+59  
 770 Pipe  
 108+17

Pipe in place





BANKY DITCH  
BENTON TWP  
1945



CHAS. E. BENTON  
 ENGINEER  
 BENTON TWP.  
 1945



# BANKY DITCH

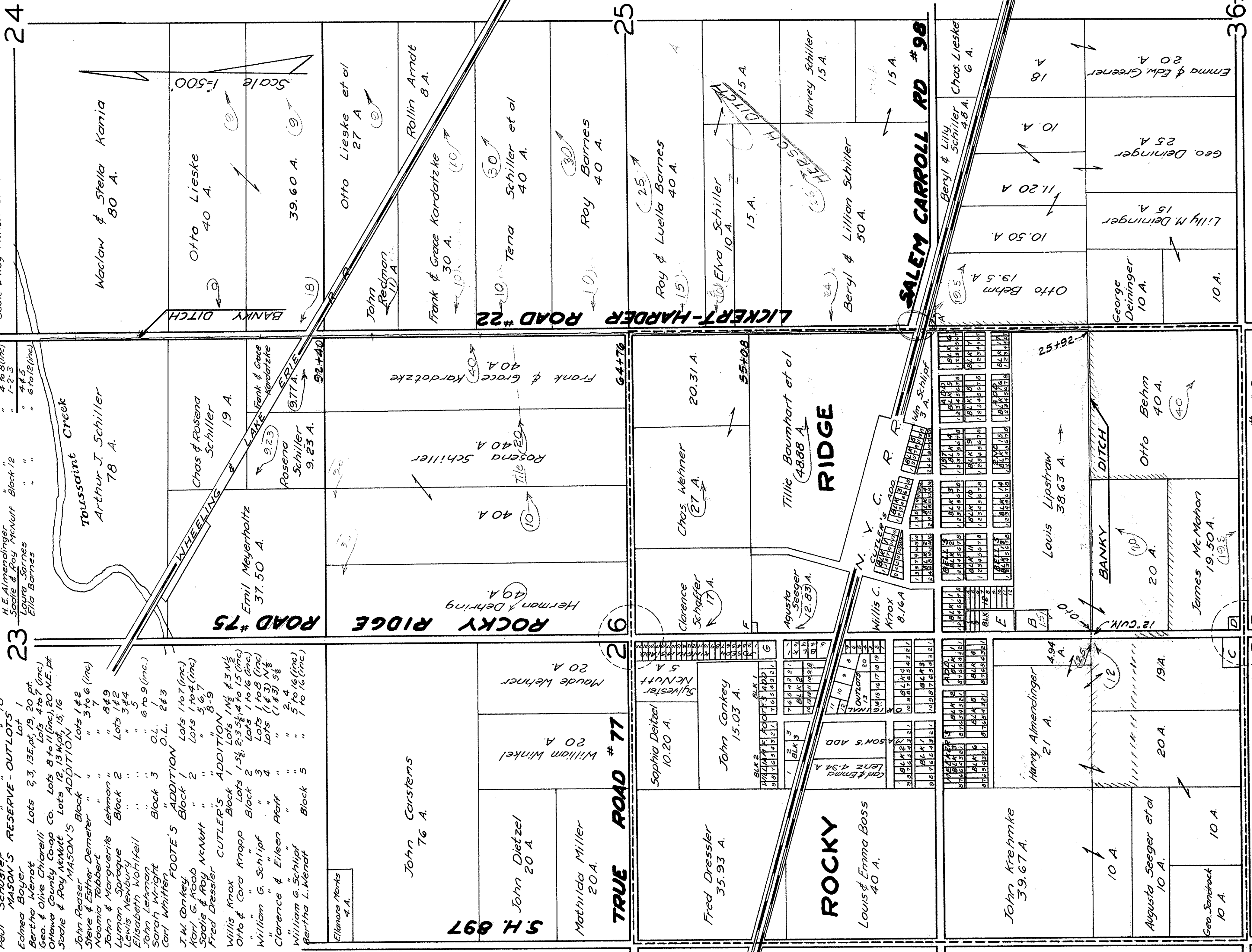
## BENTON TOWNSHIP OTTAWA COUNTY

1944

**PROPERTY OWNERS - ROCKY RIDGE**  
 Bertie W. Mills Block 1 Lot 1  
 Wanda Fillmore Meyers " " " 2  
 Gust Fillmore " " " 3  
 Harvey & Anna Wittman " " " 4  
 " " " " " 5  
 Gust Fillmore Block 2 Lots 1 & 14  
 Leah Strocher " " " 3  
 Viola Neander " " " 4  
 Grover L. Meyer " " " 5  
 Orlo & Hula Leske " " " 6  
 Ira & Ethel Barnes " " " 7  
 German Lutheran Ch. " " " 8  
 Richard Barnes " " " 9  
 Minnie Rief " " " 10  
 D. Fillmore " " " 11  
 Edna Boyer " " " 12  
 Paul Schuster " " " 13  
**MASON'S RESERVE - OUTLOTS**  
 Edna Boyer Lot 1  
 Bertha Wendt Lots 2, 3, 13E, pt. 19, 20 pt.  
 Geo. & Olive Chiarelli Lots 4 to 7 (inc.)  
 Ottawa County Co-op Co. Lots 8 to 11 (inc.) 20 N.E. pt.  
 Soble & Roy McWhit Lots 12, 13, 14 pt. 15, 16  
**MASON'S BLOCK 1**  
 John Reaser Block 1 Lots 1 & 2  
 Steve & Esther Demeter " " " 3 to 6 (inc.)  
 Noamia Tabbert " " " 7  
 John & Marguerite Lehman " " " 8 & 9  
 Lyman Sprague Block 2 Lots 1 & 2  
 Lewis Newbury " " " 3 & 4  
 Elizabeth Wohlfheil " " " 5  
 John Lehman Block 3 O.L. 1  
 Sarah Wright O.L. 2 & 3  
 Carl Whitten O.L. 2 & 3  
**FOOTE'S ADDITION**  
 J. W. Conkey Block 1 Lots 1 to 7 (inc.)  
 Karl G. Hoob Block 2 Lots 1 to 4 (inc.)  
 Soble & Roy McWhit " " " 5, 6, 7  
 Fred Dressler " " " 8-9  
**CUTLER'S ADDITION**  
 Willis Knox Block 1 Lots 1 to 13 1/2  
 Otto & Cora Knapp Lots 1, 5, 2, 3, 4 to 15 (inc.)  
 William G. Schlipf Block 2 Lots 1 to 6 (inc.)  
 Clarence & Eileen Pfaff " " " 7  
 William G. Schlipf " " " 8  
 Bertha L. Wendt Block 5 " " " 9 to 16 (inc.)

**BELL'S 1ST ADDITION**  
 Otto & Cora Knapp Block 1 Lots 1, 2, 3  
 Ann Lipshaw " " " 4 to 8 (inc.)  
 Laura Jarman " " " 9 to 13 (inc.)  
 Margaret Schlipf " " " 14 to 15  
 " " " 16 to 18  
 " " " 19 to 21  
 " " " 22 to 25  
 " " " 26 to 28  
 " " " 29 to 31  
 " " " 32 to 34  
 " " " 35 to 37  
 " " " 38 to 40  
 " " " 41 to 43  
 " " " 44 to 46  
 " " " 47 to 49  
 " " " 50 to 52  
 " " " 53 to 55  
 " " " 56 to 58  
 " " " 59 to 61  
 " " " 62 to 64  
 " " " 65 to 67  
 " " " 68 to 70  
 " " " 71 to 73  
 " " " 74 to 76  
 " " " 77 to 79  
 " " " 80 to 82  
 " " " 83 to 85  
 " " " 86 to 88  
 " " " 89 to 91  
 " " " 92 to 94  
 " " " 95 to 97  
 " " " 98 to 100

**BELL'S 2ND ADDITION**  
 Susan Sprague Block 13 Lots 1 to 8 (inc.)  
 Michael Hacker Block 14 " " " 9 to 16 (inc.)  
 Frank Bostuber " " " 17 to 24 (inc.)  
 Charles Pfeiffer " " " 25 to 32 (inc.)  
 Chas. Newberry " " " 33 to 40 (inc.)  
**MEAKERS ADDITION**  
 Clayton & Mildred Deppner Block 1 Lots 1 to 25  
 " " " 26 to 50  
 " " " 51 to 75  
 " " " 76 to 100  
 " " " 101 to 125  
 " " " 126 to 150  
 " " " 151 to 175  
 " " " 176 to 200  
 " " " 201 to 225  
 " " " 226 to 250  
 " " " 251 to 275  
 " " " 276 to 300  
 " " " 301 to 325  
 " " " 326 to 350  
 " " " 351 to 375  
 " " " 376 to 400  
 " " " 401 to 425  
 " " " 426 to 450  
 " " " 451 to 475  
 " " " 476 to 500



**KINGHAM'S ADDITION**  
 Frank Brugh Lot 1  
 Lester E. Helback Lots 2 & 3  
 Lucius Van Glabam " 4 & 5  
 " " " 6 & 7  
 Nathan Neumanster " 8 & 9  
 Reuben Dehning " 10 & 11  
 " " " 12 to 14  
 Chas. & Rowena Schiller " 15 to 16 1/2  
 Sylvia Meyer " 17 to 18  
 Herman Dehning " 19 to 20  
 John & Alvina Wittman " 21 & 22  
 August Ohm " " "

**A - Otto Behm 0.5 A.**  
**B - Joseph Yantees 1.5 A.**  
**C - Emiline Wepler 1.0 A.**  
**D - Redman & Millinger-Kepler 0.5 A.**  
**E - Harry Almenclinger 1.41 A.**  
**F - Anna Jugh 50 x 120.**  
**G - Bertie W. Mills 1.04 A.**







# BANKY DITCH

## BENTON TOWNSHIP OTTAWA COUNTY

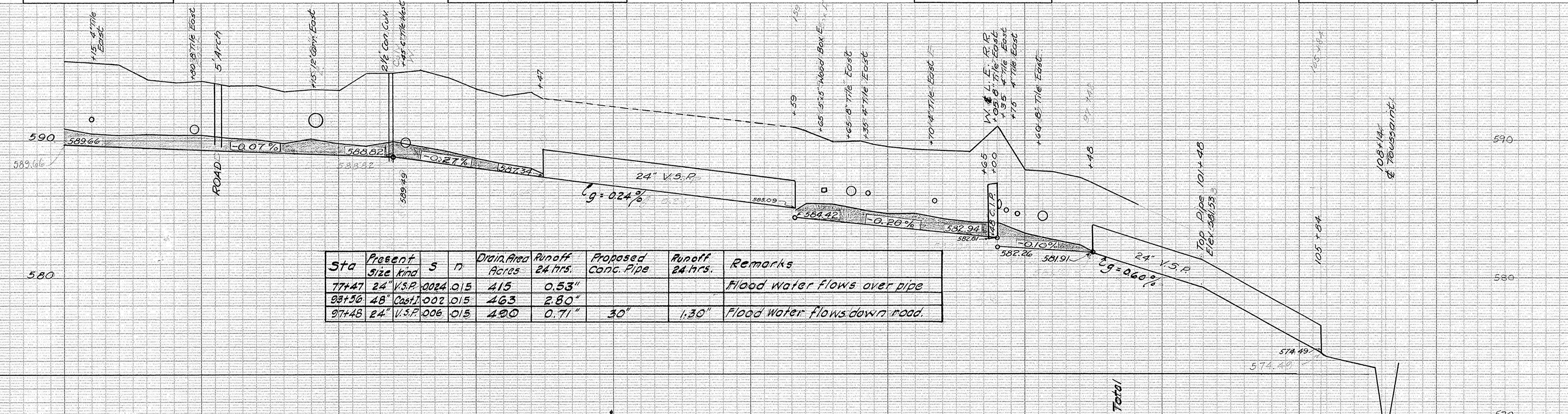
1944

B.M. Elev. 595.56  
S.E. Cor. So. Headwall  
Sta. 64+50

B.M. Elev. 590.14  
South Edge Center  
of Headwall @ Sta 77+48

B.M. Elev. 587.26  
Top Bell 48" C.P.P.  
Under R.R. @ 93+66

B.M. Elev. 582.19  
N.E. Corner So. East Wing  
on Toussaint Bridge

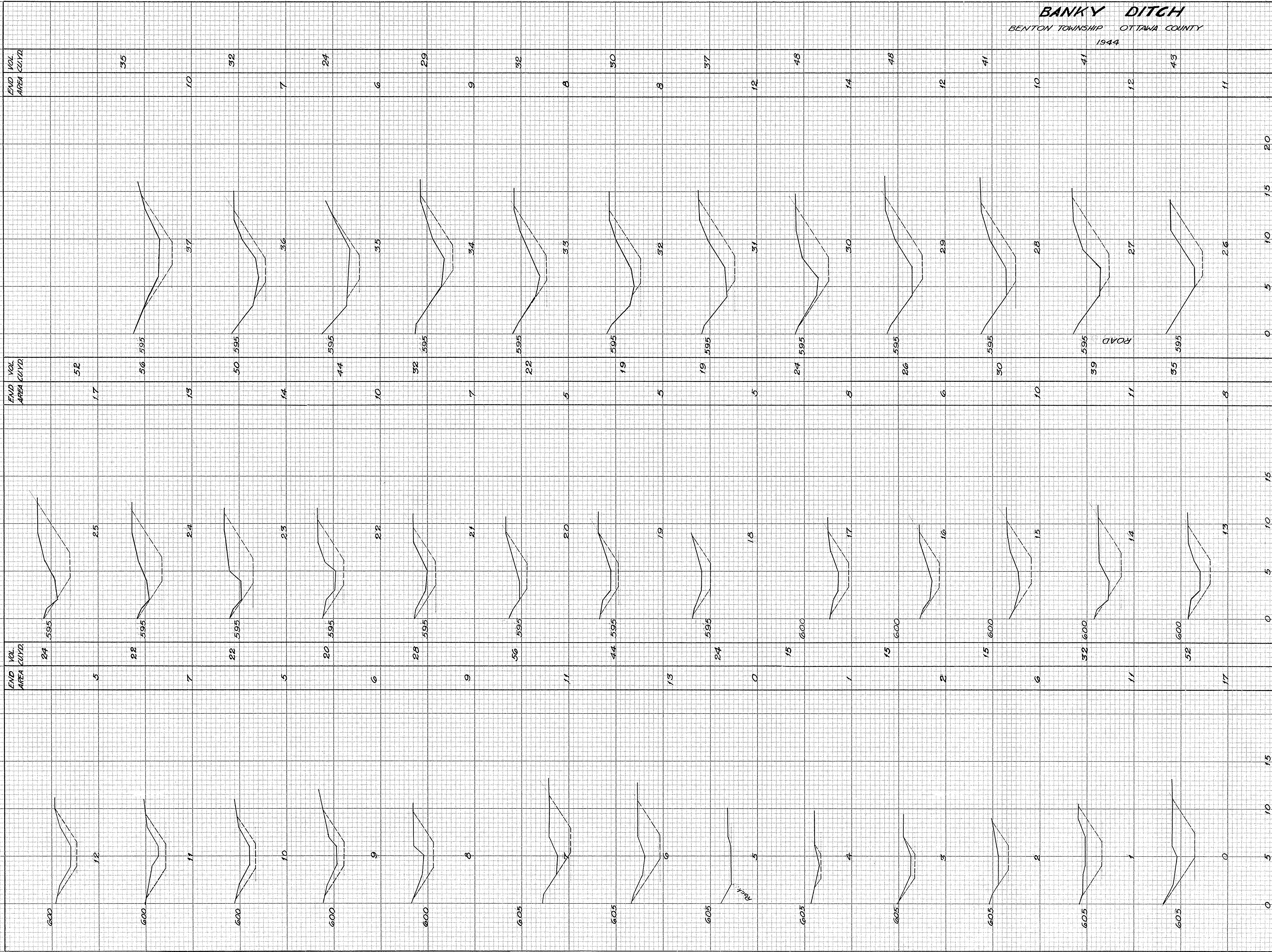


Sta	Present Size	Kind	S	n	Drain Area Acres	Runoff 24 hrs.	Proposed Conc. Pipe	Runoff 24 hrs.	Remarks
77+47	24"	V.S.P.	.0024	.015	415	0.53"			Flood water flows over pipe
93+56	48"	Cast	.002	.015	463	2.80"			
97+48	24"	V.S.P.	.006	.015	420	0.71"	30"	1.30"	Flood water flows down road.

No. of Cu. Yards	67	56	50	59	59	43	30	32	30	33	39	50	61	67	50	37	44	17	25	63	48	50	50	48	57	41	59	57	37	7	4044 Total																				
Width of Top		190				193		148		165		220	213	207	180	Where Top Width is not given. See Cross Section																																			
Width of Bottom	6.11 2 1/2																																																		
Cut from Hub	6.03	6.02	4.98	4.84	5.03	4.66	4.84	4.47	4.67	4.63	5.95	6.03	6.32	6.27	5.74	5.51	6.04	5.71		6.45	6.33	5.74	6.03	5.73	5.82	5.88	6.05	8.07	8.75	5.68	5.68	5.36	4.502 2 1/2																		
No. of Station	60	61	62	63	64	65	66	67	68	69	70	71	72	73	74	75	76	77	78	79	80	81	82	83	84	85	86	87	88	89	90	91	92	93	94	95	96	97	98	99	100	101	102	103	104	105	106	107	108	109	110

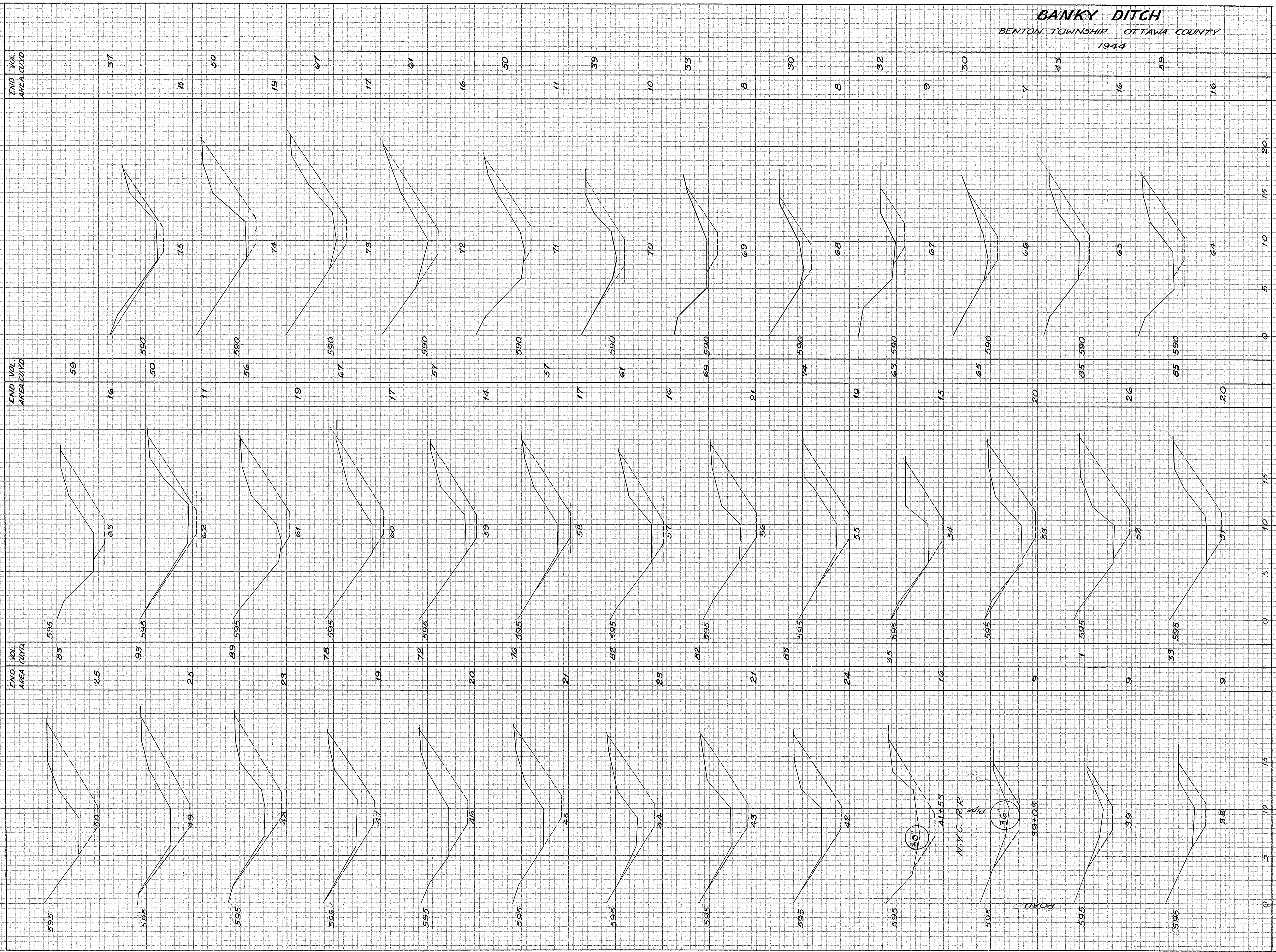


**BANKY DITCH**  
 BENTON TOWNSHIP OTTAWA COUNTY  
 1944





**BANKY DITCH**  
 BENTON TOWNSHIP OTTAWA COUNTY  
 1944



50"  
 N.Y.C. R.R.  
 pipe  
 39+03  
 ROAD



**BANKY DITCH**  
 BENTON TOWNSHIP OTTAWA COUNTY  
 1944

END VOL  
 AREA CU YD

END VOL  
 AREA CU YD

TOTAL VOL. CU YDS. 4094

Center Toussaint Creek  
 108+14

57+49  
 108+84  
 F7d. Pipe

Pipe in place

Pipe in place

