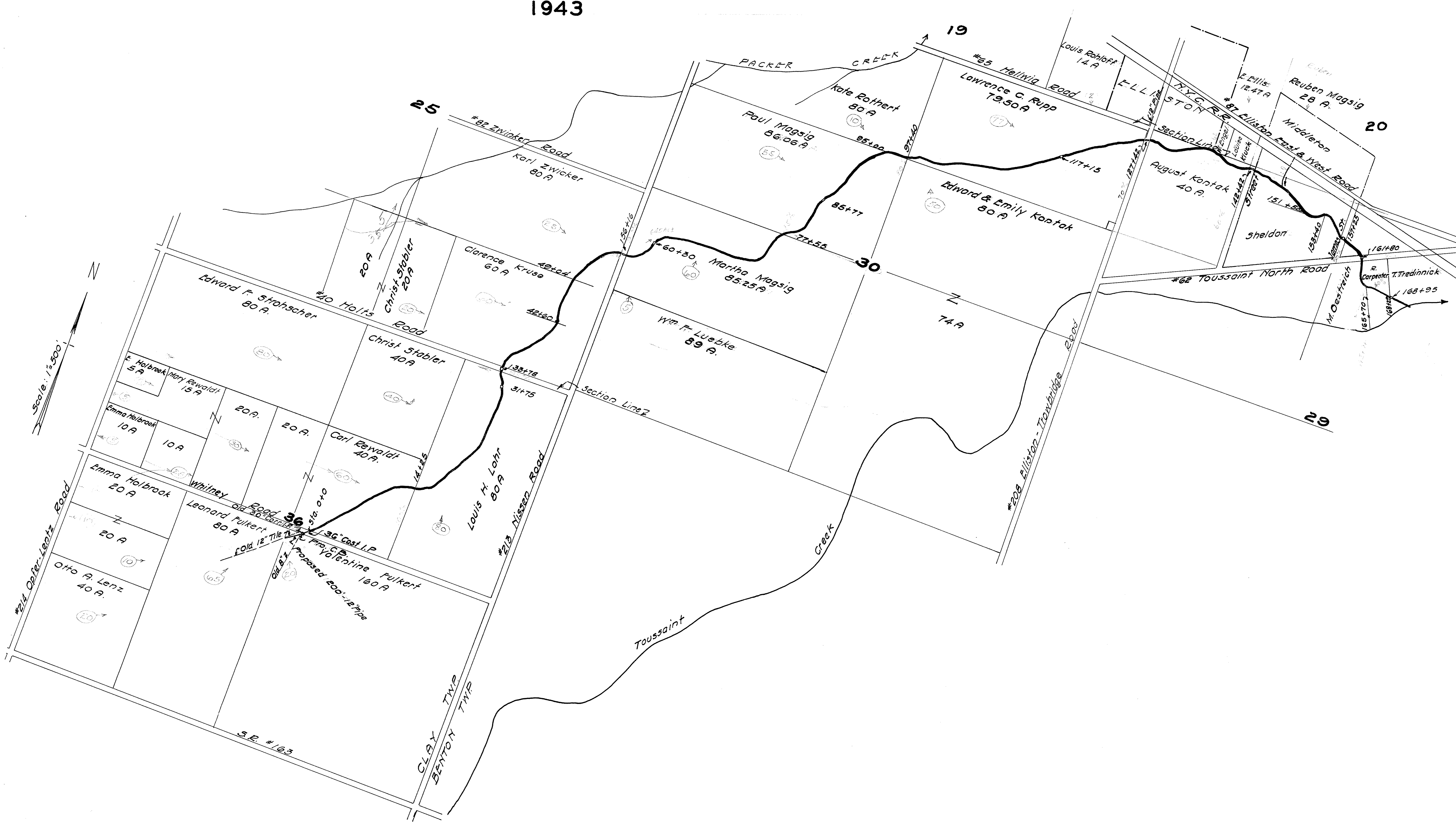


# LENZ DITCH

1943



# LENZ DITCH

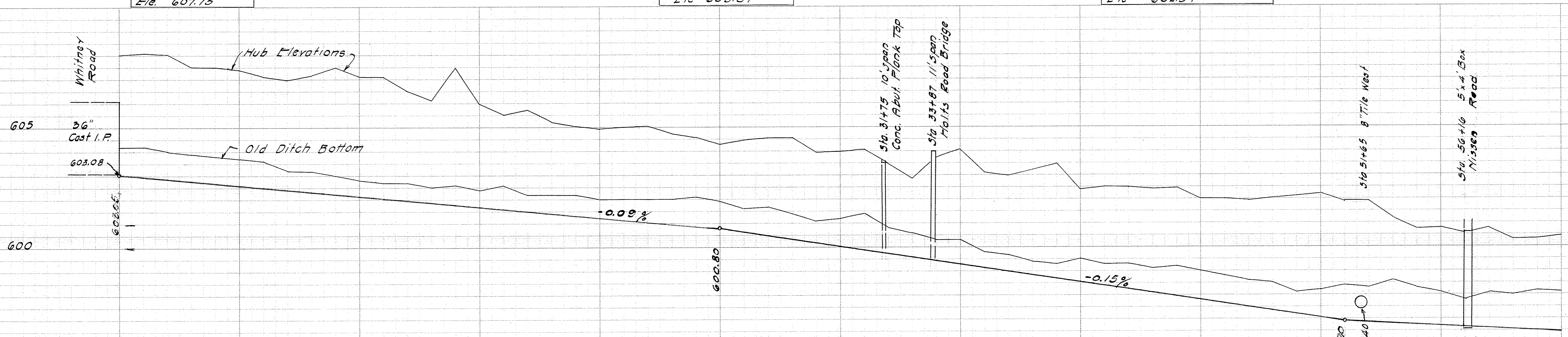
## CLAY - BENTON TWP

1943

B.M. Sta. 0+25  
Spike in Oak 12"  
Ele. 607.75

B.M. Sta. 33+70  
"x" S.E. Bridge Wing  
Ele. 605.87

B.M. Sta. 56+04  
"x" Center West Headwall  
Ele. 602.54



No. of Cubic Yards	28	30	28	26	20	22	18	15	15	15	15	15	15	15	15	15	15	15	15	17	17	15	17	18	15	15	20	22	17	15	15	15	15	15	18	26	28	26	24	22	22	24	20	24	31	31	33	31	26	18	22	35	35								
Width of Top	See Cross-Sections																																																												
Width of Bottom	5.00	2 1/2	5.10	5.10	4.76	4.82	4.78	4.72	4.56	5.03	5.20	5.10	5.15	4.54	4.50	5.06	4.28	3.92	4.20	3.78	3.60	3.66	3.83	3.96	3.73	3.70	3.40	3.81	4.04	4.20	3.73	3.91	3.97	3.90	4.38	4.76	3.83	4.10	4.23	4.31	4.48	4.20	4.34	4.47	4.70	4.92	5.16	4.98	5.03	4.41	3.90	4.08	3.91	4.18	3.73	3.82	3.88	2 1/2			
Cut from Hub	5.00	2 1/2	5.10	5.10	4.76	4.82	4.78	4.72	4.56	5.03	5.20	5.10	5.15	4.54	4.50	5.06	4.28	3.92	4.20	3.78	3.60	3.66	3.83	3.96	3.73	3.70	3.40	3.81	4.04	4.20	3.73	3.91	3.97	3.90	4.38	4.76	3.83	4.10	4.23	4.31	4.48	4.20	4.34	4.47	4.70	4.92	5.16	4.98	5.03	4.41	3.90	4.08	3.91	4.18	3.73	3.82	3.88	2 1/2			
No. of Station	0	1	2	3	4	5	6	7	8	9	10	11	12	13	14	15	16	17	18	19	20	21	22	23	24	25	26	27	28	29	30	31	32	33	34	35	36	37	38	39	40	41	42	43	44	45	46	47	48	49	50	51	52	53	54	55	56	57	58	59	60



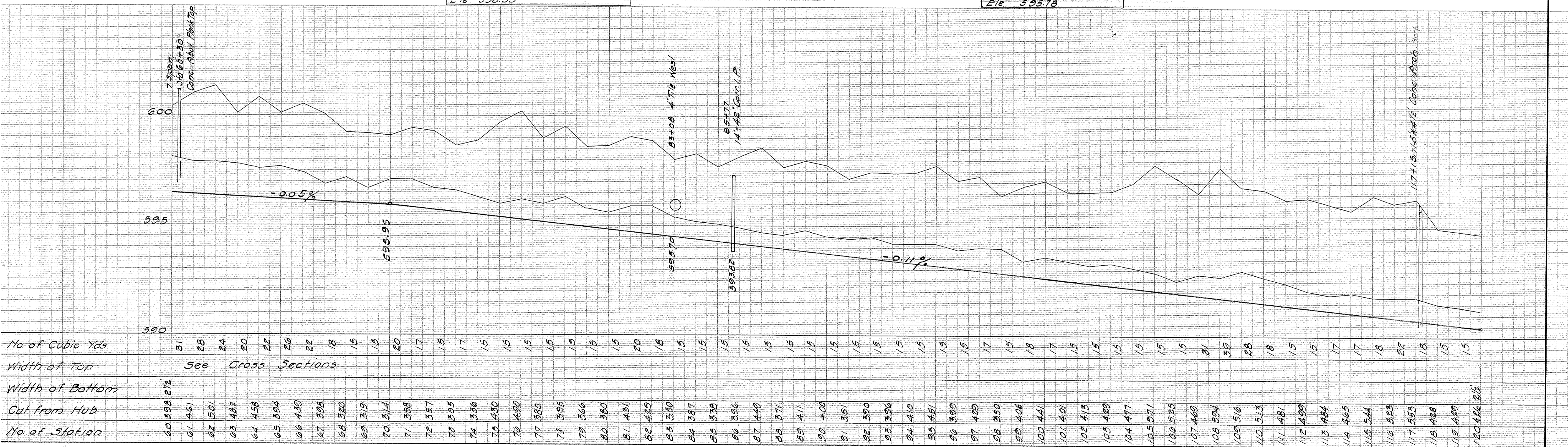
# LENZ DITCH

## CLAY - BENTON TWP

1943

B.M. Sta. 85+70  
Top of Horseshoe in West Abut  
Elev 598.55

B.M. Sta. 117+35  
N.E. End N.E. Wing wall  
Elev 595.78





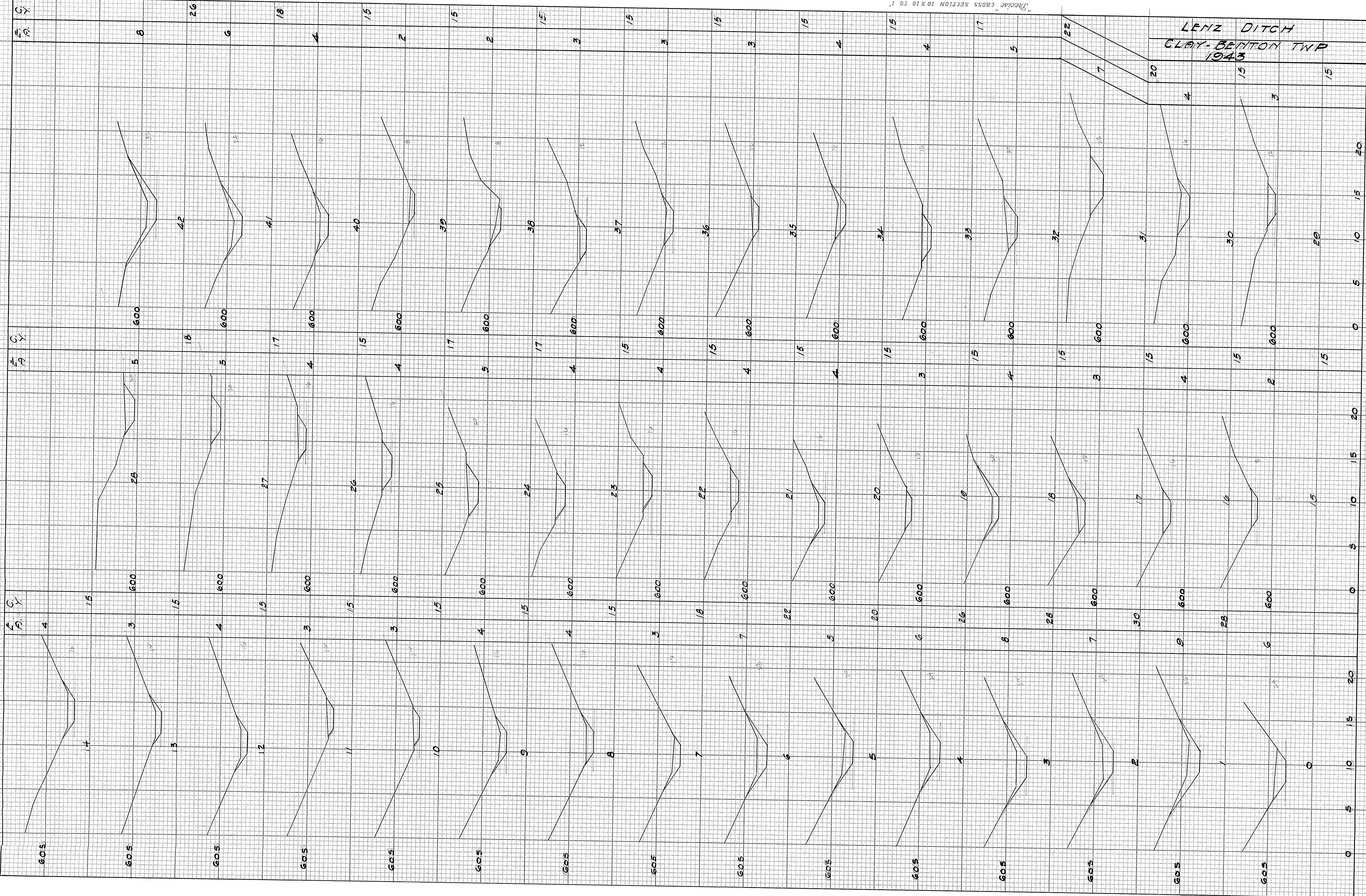




"Check" CROSS SECTION 10 X 10 TO 1"  
B. R. ELLIOTT CO.  
MADE IN U.S.A.

"Check" CROSS SECTION 10 X 10 TO 1"  
B. R. ELLIOTT CO.  
MADE IN U.S.A.

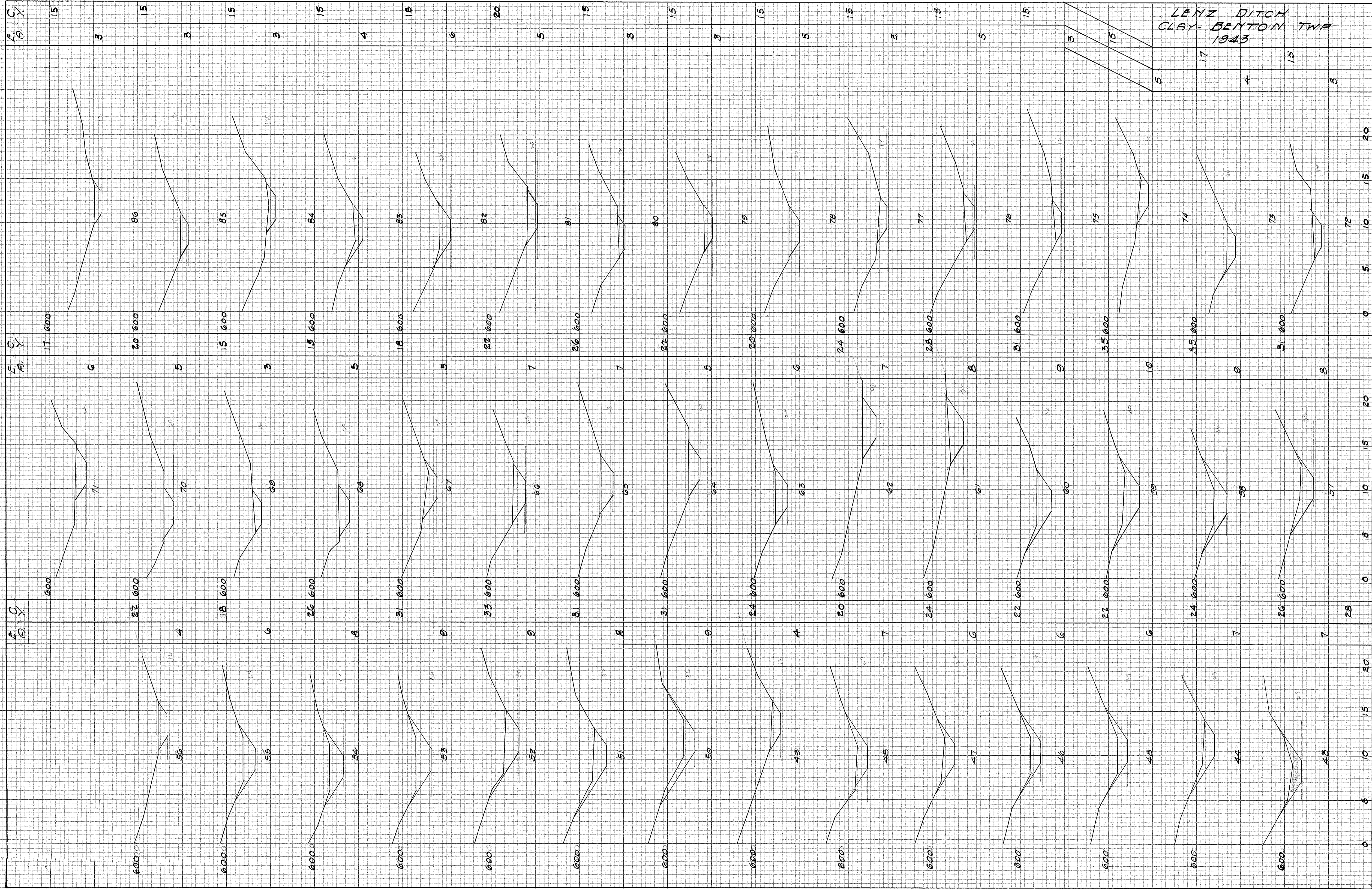
LENZ DITCH  
CLAY-BENTON TWP  
1943



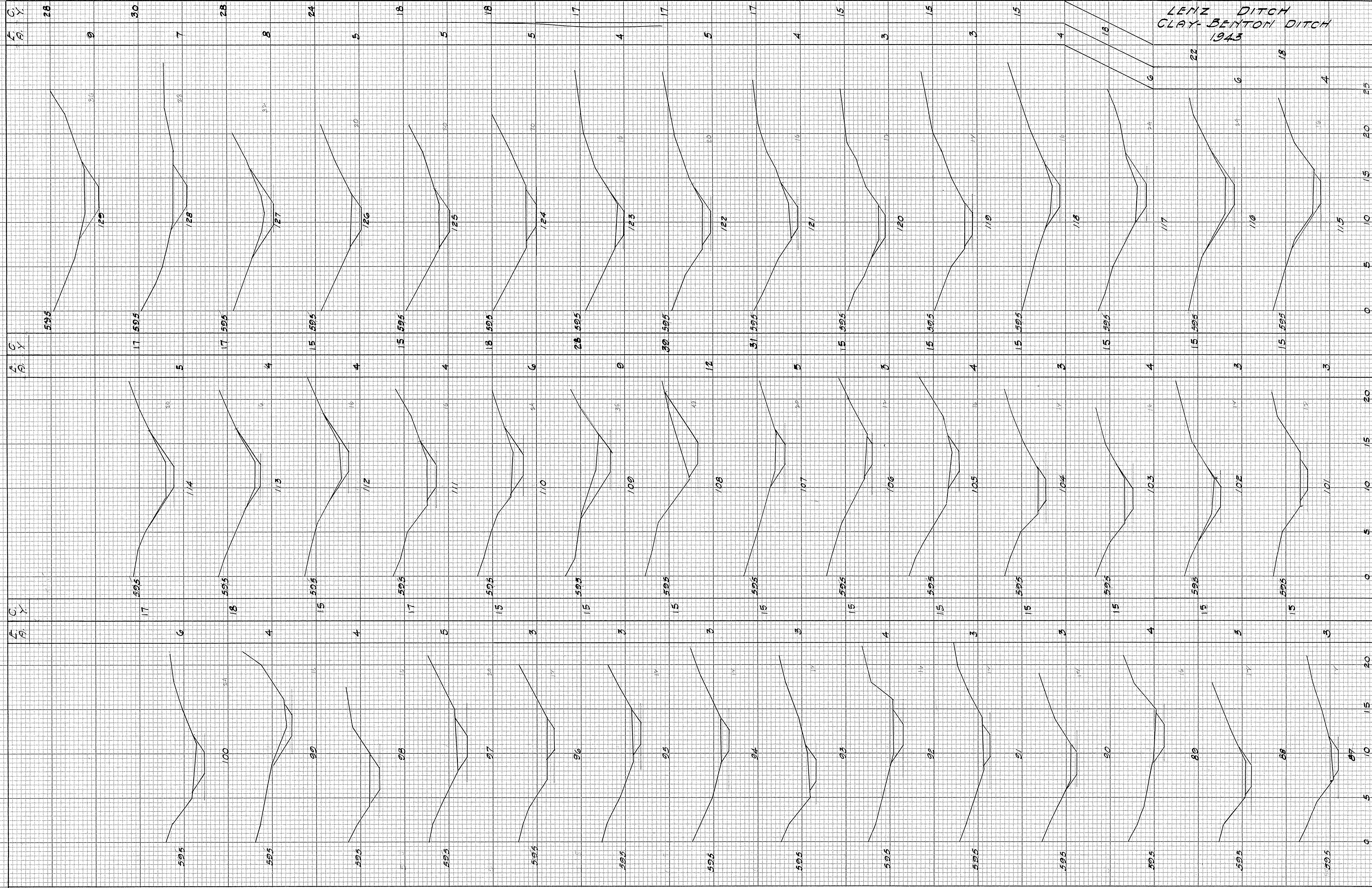
10-1



LENZ DITCH  
CLAY-BENTON TWA  
1943

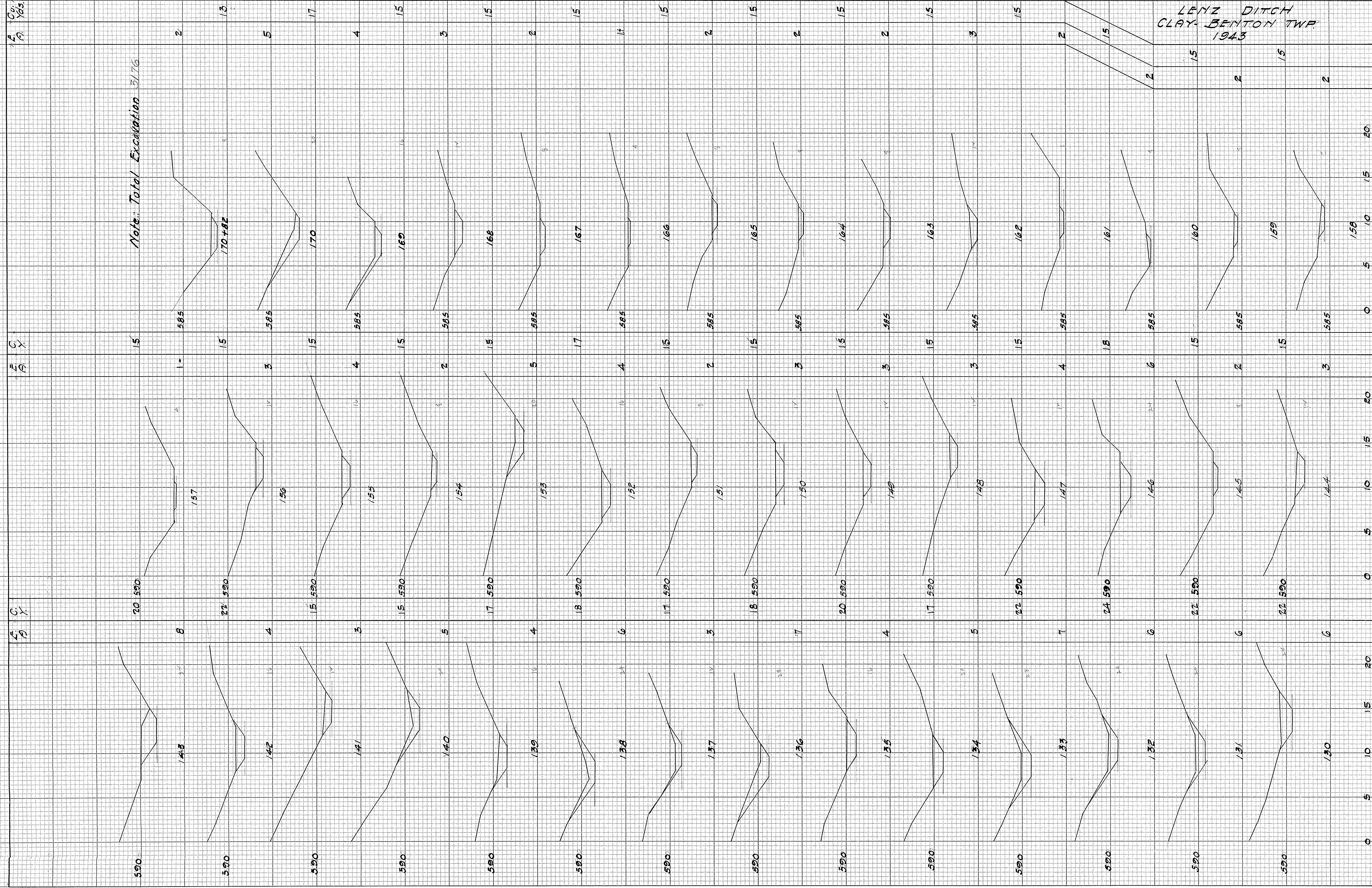






LENZ DITCH  
CLAY-BENTON DITCH  
1943





Note: Total Excavation 5176

LENZ DITCH  
CLAY-BENTON TWP  
1943

"Shepard" CROSS SECTION 10 X 10 TO 1"  
B & SILLIOTT CO.  
MADE IN U.S.A.

"Shepard" CROSS SECTION 10 X 10 TO 1"  
B & SILLIOTT CO.  
MADE IN U.S.A.