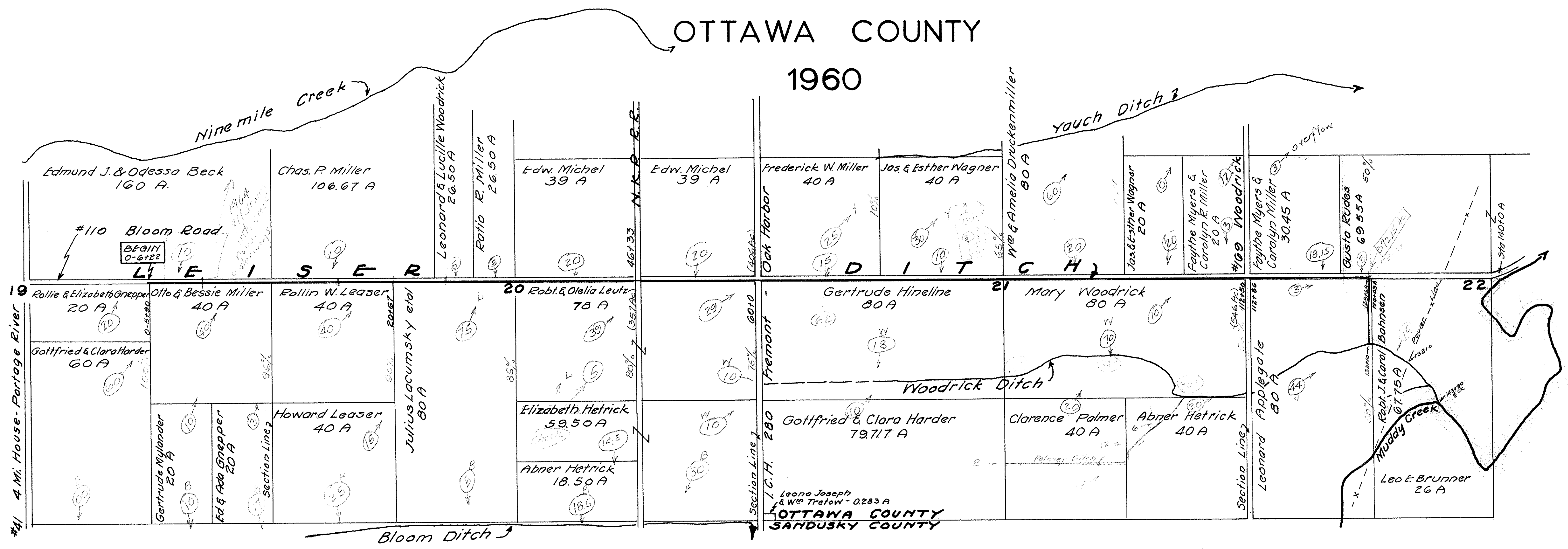
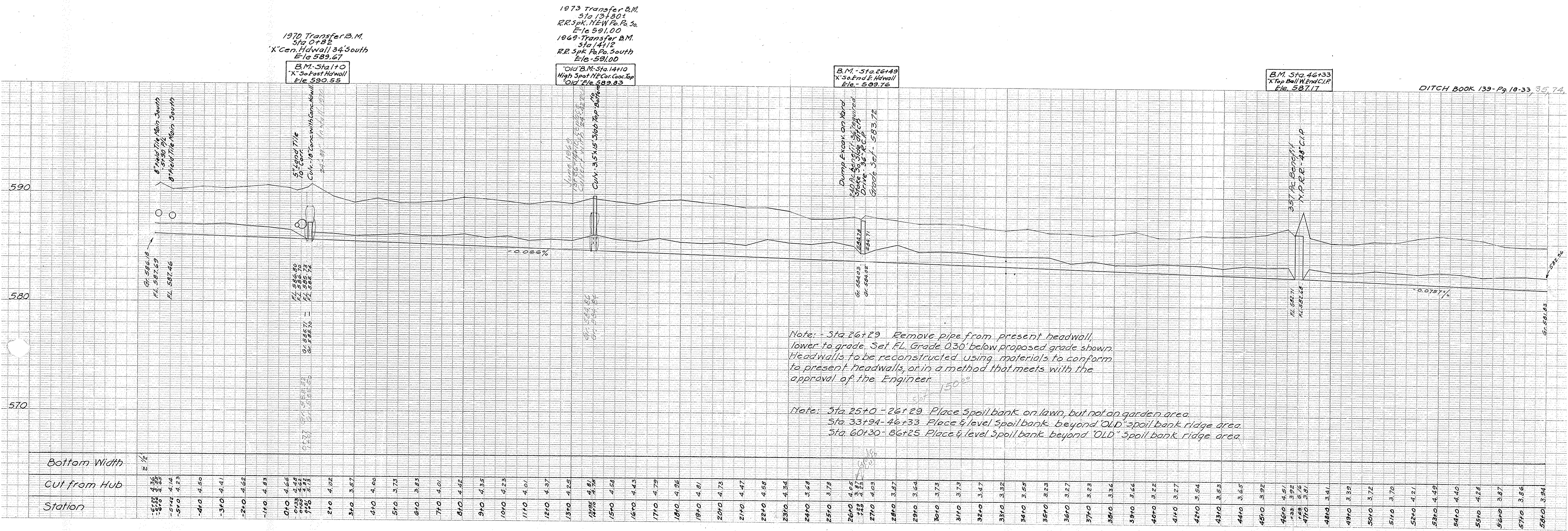


LEISER DITCH SALEM TOWNSHIP OTTAWA COUNTY

1960



LEISER DITCH SALEM TWP. SEC. 19-20-21-22 1960



1970 Transfer B.M.
Sta 0+82
X-Cen. Hdwall 34.5 South
Elev 589.67

B.M. Sta 1+0
X-So Fast Hdwall
Elev 590.55

1973 Transfer B.M.
Sta 13+80+
RR Spk. NEW Pa. Pa. So.
Elev 591.00

1969 Transfer B.M.
Sta 14+12
RR Spk Pa. Pa. South
Elev 591.00

Old B.M. Sta. 14+10
High Spot NK Cor. Conc. Top
Old Elev 589.83

B.M. Sta. 26+49
X-So End E Hdwall
Elev 589.76

B.M. Sta. 46+33
X-Top Ball W End CLIP
Elev 587.17

DITCH BOOK 139 - Pg. 10-33, 35, 74

Note: - Sta 26+29 Remove pipe from present headwall, lower to grade. Set FL Grade 0.30' below proposed grade shown. Headwalls to be reconstructed using materials to conform to present headwalls, or in a method that meets with the approval of the Engineer.

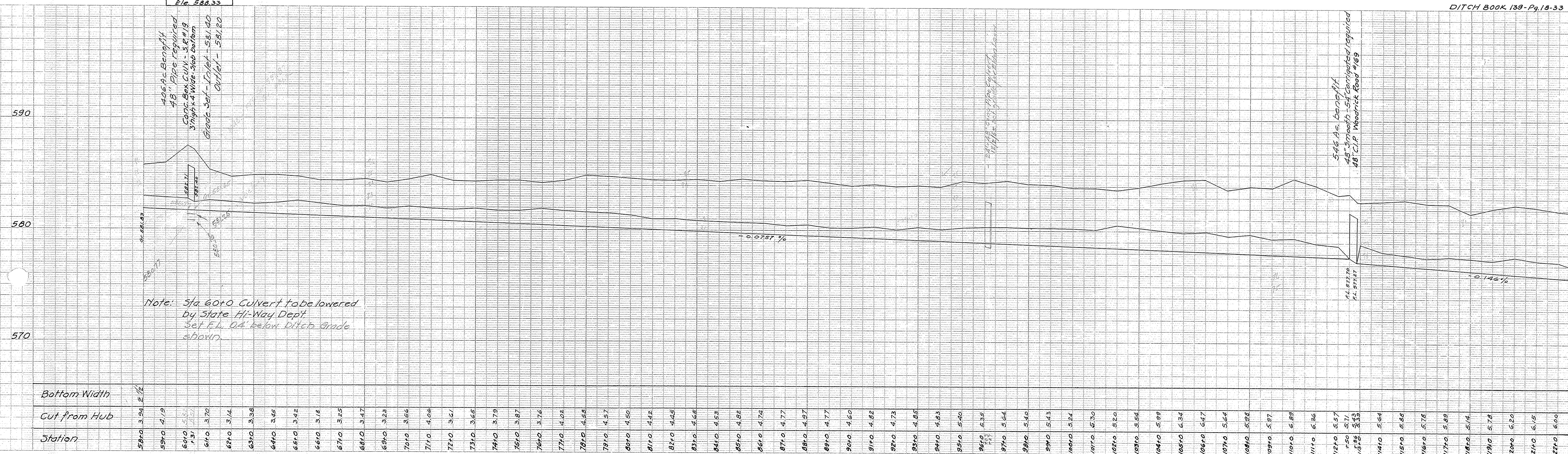
Note: Sta 25+0 - 26+29 Place Spoil bank on lawn, but not on garden area.
Sta 33+94 - 46+33 Place & level Spoil bank beyond "OLD" spoil bank ridge area.
Sta 60+30 - 86+25 Place & level Spoil bank beyond "OLD" spoil bank ridge area.

Bottom Width	2/1
565+0	4.36
566+0	4.36
567+0	4.36
568+0	4.12
569+0	4.23
570+0	4.50
571+0	4.41
572+0	4.62
573+0	4.83
574+0	4.66
575+0	4.48
576+0	4.92
577+0	5.13
578+0	4.02
579+0	3.57
580+0	4.00
581+0	3.73
582+0	3.83
583+0	4.01
584+0	4.42
585+0	4.35
586+0	4.23
587+0	4.01
588+0	4.37
589+0	4.25
590+0	4.16
591+0	4.52
592+0	4.43
593+0	4.79
594+0	4.96
595+0	4.81
596+0	4.73
597+0	4.47
598+0	4.58
599+0	4.54
600+0	3.68
601+0	3.78
602+0	4.05
603+0	3.81
604+0	3.88
605+0	4.03
606+0	3.87
607+0	3.64
608+0	3.73
609+0	3.73
610+0	3.47
611+0	3.32
612+0	3.55
613+0	3.23
614+0	3.27
615+0	3.23
616+0	3.36
617+0	3.66
618+0	3.92
619+0	4.51
620+0	3.92
621+0	4.76
622+0	3.81
623+0	3.41
624+0	3.39
625+0	3.72
626+0	3.70
627+0	4.21
628+0	4.49
629+0	4.40
630+0	4.24
631+0	3.87
632+0	3.86
633+0	3.84

LEISER DITCH SALEM TWP. SEC. 19-20-21-22 1960

Handwritten notes:
 11/27/60
 1/6 5880 - 2000
 2/10/60 5880 - 2000
 3/10/60 5880 - 2000
 4/10/60 5880 - 2000
 5/10/60 5880 - 2000
 6/10/60 5880 - 2000
 7/10/60 5880 - 2000
 8/10/60 5880 - 2000
 9/10/60 5880 - 2000
 10/10/60 5880 - 2000
 11/10/60 5880 - 2000
 12/10/60 5880 - 2000

B.M. Sta. 60+31
 "X" No. End E. Howell
 Elev. 588.33



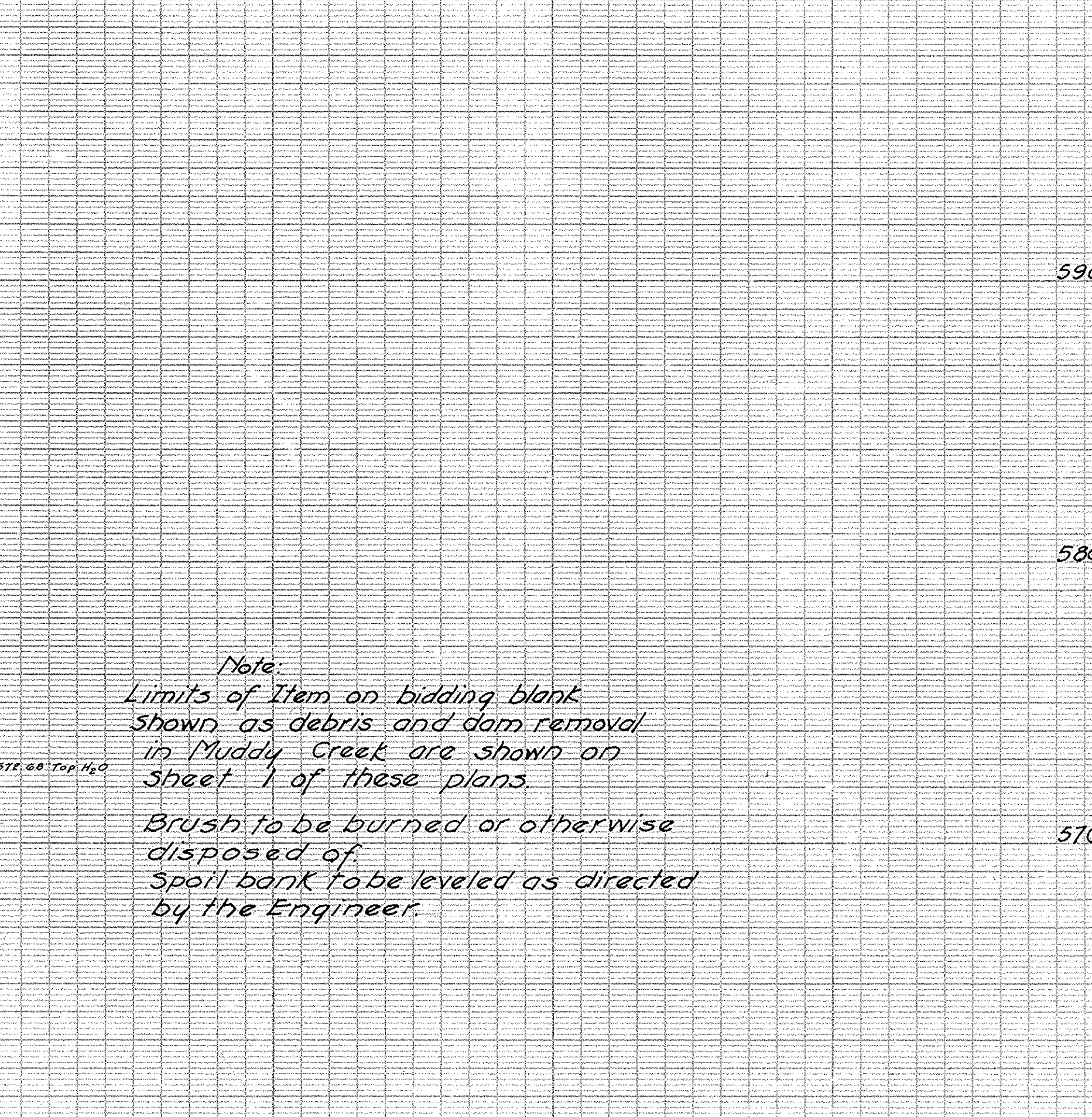
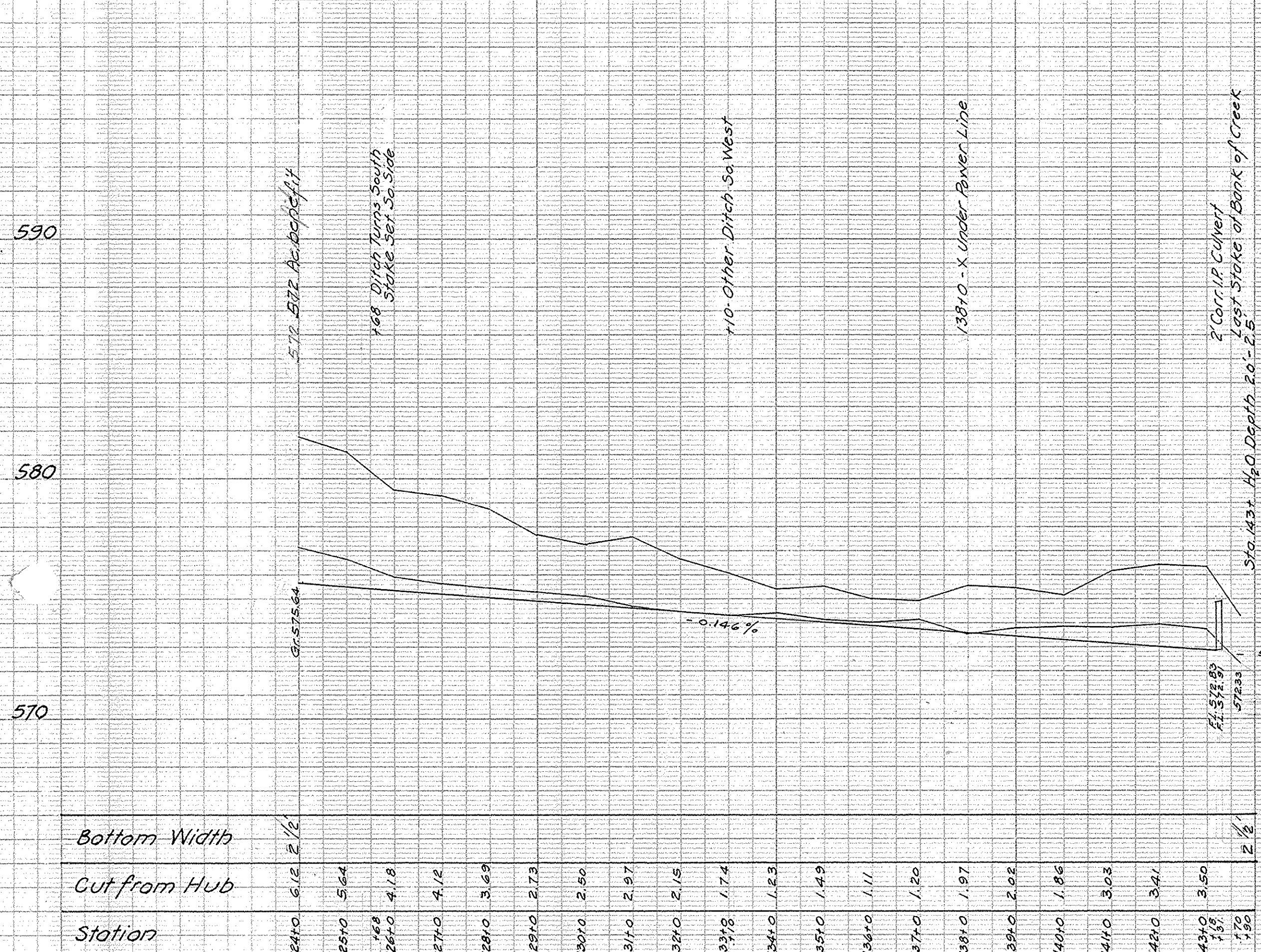
Note: Sta 60+00 Culvert to be lowered by State Hi-Way Dept. Set F.W. 0.4' below ditch grade shown.

Bottom Width	Cut from Hub	Station
3.94	4.19	58+0
4.19	4.19	59+0
4.19	4.19	60+0
4.19	4.19	61+0
4.19	4.19	62+0
4.19	4.19	63+0
4.19	4.19	64+0
4.19	4.19	65+0
4.19	4.19	66+0
4.19	4.19	67+0
4.19	4.19	68+0
4.19	4.19	69+0
4.19	4.19	70+0
4.19	4.19	71+0
4.19	4.19	72+0
4.19	4.19	73+0
4.19	4.19	74+0
4.19	4.19	75+0
4.19	4.19	76+0
4.19	4.19	77+0
4.19	4.19	78+0
4.19	4.19	79+0
4.19	4.19	80+0
4.19	4.19	81+0
4.19	4.19	82+0
4.19	4.19	83+0
4.19	4.19	84+0
4.19	4.19	85+0
4.19	4.19	86+0
4.19	4.19	87+0
4.19	4.19	88+0
4.19	4.19	89+0
4.19	4.19	90+0
4.19	4.19	91+0
4.19	4.19	92+0
4.19	4.19	93+0
4.19	4.19	94+0
4.19	4.19	95+0
4.19	4.19	96+0
4.19	4.19	97+0
4.19	4.19	98+0
4.19	4.19	99+0
4.19	4.19	100+0
4.19	4.19	101+0
4.19	4.19	102+0
4.19	4.19	103+0
4.19	4.19	104+0
4.19	4.19	105+0
4.19	4.19	106+0
4.19	4.19	107+0
4.19	4.19	108+0
4.19	4.19	109+0
4.19	4.19	110+0
4.19	4.19	111+0
4.19	4.19	112+0
4.19	4.19	113+0
4.19	4.19	114+0
4.19	4.19	115+0
4.19	4.19	116+0
4.19	4.19	117+0
4.19	4.19	118+0
4.19	4.19	119+0
4.19	4.19	120+0
4.19	4.19	121+0
4.19	4.19	122+0
4.19	4.19	123+0

LEISER DITCH SALEM TWP. SEC. 19-20-21-22 1960

B.M. - Sta 125+30
X Conc. Retainer 50. in Rd.
File 380.06

B.M. - 100' N. of Sta. 140+0
R.R. Spk. Power Pole
Elev. 581.38
DITCH BOOK 139 - Pg. 18-33

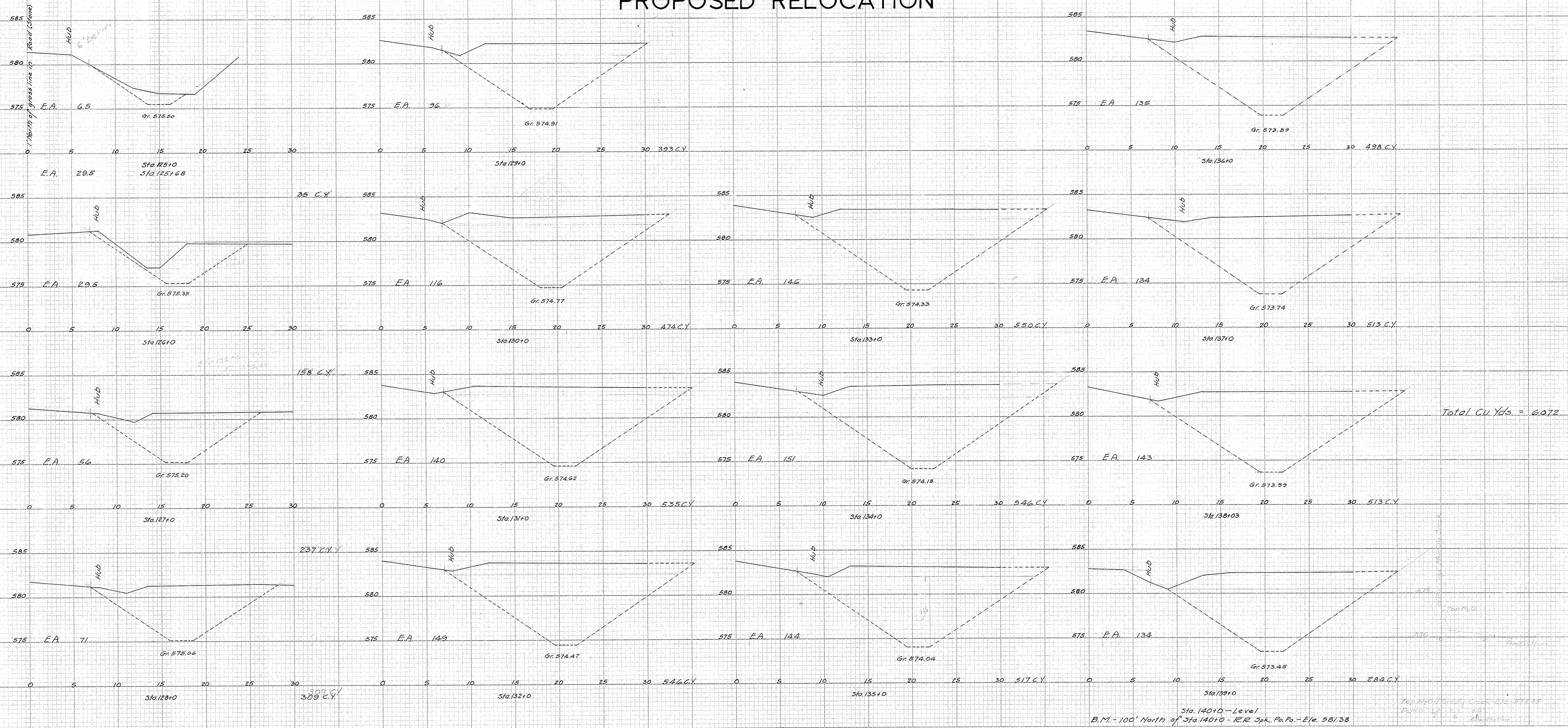


Note:
Limits of Item on bidding blank
shown as debris and dam removal
in Muddy Creek are shown on
Sheet 1 of these plans.
Brush to be burned or otherwise
disposed of.
Spoil bank to be leveled as directed
by the Engineer.

PROPOSED RELOCATION
Rejected at final hearing

LEISER DITCH SALEM TWP. SEC. 19-20-21-22 1960

PROPOSED RELOCATION



Sta. 140+0 - Level
B.M. - 100' North of Sta. 140+0 - R.R. Spk. Pa. Po. - Elev. 581.38
Top H.C. - 10' North of Sta. 140+0 - Elev. 577.83
Depth 1/2" = 50'