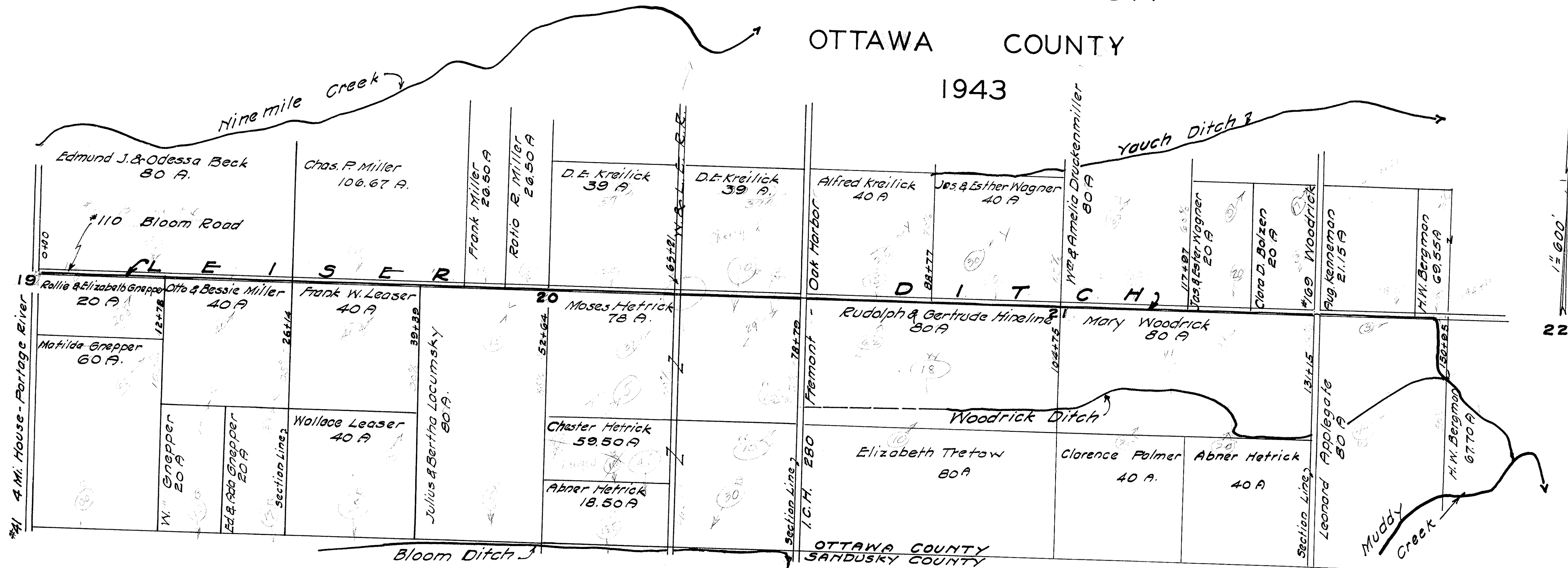


LEISER DITCH

OTTAWA COUNTY

1943



1" = 600'
22

LEISER DITCH

OTTAWA COUNTY

SALEM TOWNSHIP

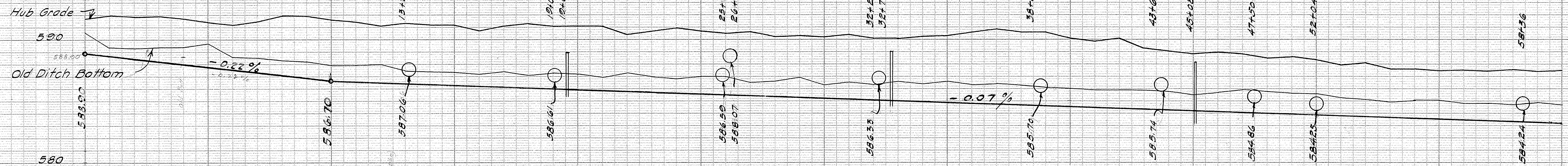
1943

B.M. sta. 3+33
Spike Maple L#
Elev. 592.55

B.M. sta. 19+50
Spike Maple R#
Elev. 590.88

B.M. sta. 32+80
High spot N.E. Cor. Con. Top R#
Elev. 589.83

B.M. sta. 57+50
Spike Hickory R#
Elev. 587.34



Station	No. of Cubic Yards	Width of Top	Width of Bottom	Depth from Hub	Bottom Elevation
0	28	8.3	2 1/2	2.19	583.00
1	24	9.3	3	3.27	583.50
2	28	10.6	3.33	3.33	583.50
3	35	10.2	3.62	3.62	583.50
4	46	10.2	3.69	3.69	583.50
5	44	10.2	3.38	3.38	583.50
6	44	11.3	3.63	3.63	583.50
7	61	12.0	4.13	4.13	583.50
8	72	14.0	4.84	4.84	583.50
9	65	15.0	4.06	4.06	583.50
10	56	15.0	4.01	4.01	583.50
11	54	15.0	4.80	4.80	583.50
12	52	14.5	4.53	4.53	583.50
13	46	15.0	4.88	4.88	583.50
14	35	13.8	4.80	4.80	583.50
15	28	12.8	4.84	4.84	583.50
16	31	11.7	4.46	4.46	583.50
17	54	13.8	4.95	4.95	583.50
18	65	14.8	5.16	5.16	583.50
19	54	14.0	5.07	5.07	583.50
20	44	12.8	5.08	5.08	583.50
21	43	13.0	5.14	5.14	583.50
22	43	12.4	4.57	4.57	583.50
23	37	13.0	4.95	4.95	583.50
24	37	12.7	5.26	5.26	583.50
25	33	12.0	5.01	5.01	583.50
26	37	12.3	4.95	4.95	583.50
27	50	17.7	5.10	5.10	583.50
28	52	13.8	4.76	4.76	583.50
29	57	13.5	5.01	5.01	583.50
30	50	13.8	4.90	4.90	583.50
31	43	11.8	5.20	5.20	583.50
32	56	12.7	5.00	5.00	583.50
33	56	13.4	5.09	5.09	583.50
34	50	13.6	5.24	5.24	583.50
35	52	14.5	5.36	5.36	583.50
36	54	14.0	5.72	5.72	583.50
37	61	14.7	6.07	6.07	583.50
38	68	15.2	5.92	5.92	583.50
39	65	15.8	5.94	5.94	583.50
40	52	13.8	5.55	5.55	583.50
41	50	12.7	5.38	5.38	583.50
42	57	13.2	5.60	5.60	583.50
43	56	12.8	4.92	4.92	583.50
44	48	13.7	4.74	4.74	583.50
45	56	11.7	4.54	4.54	583.50
46	68	13.8	4.80	4.80	583.50
47	65	13.1	4.69	4.69	583.50
48	57	12.0	4.41	4.41	583.50
49	50	13.5	4.63	4.63	583.50
50	46	11.4	4.47	4.47	583.50
51	56	10.6	4.09	4.09	583.50
52	56	12.0	4.34	4.34	583.50
53	59	11.3	3.99	3.99	583.50
54	67	13.4	4.05	4.05	583.50
55	52	13.2	3.99	3.99	583.50
56	43	12.0	4.06	4.06	583.50
57	44	12.0	4.04	4.04	583.50
58	50	12.3	4.25	4.25	583.50
59	50	12.5	4.14	4.14	583.50
60	50	12.8	4.38	4.38	583.50

LEISER DITCH

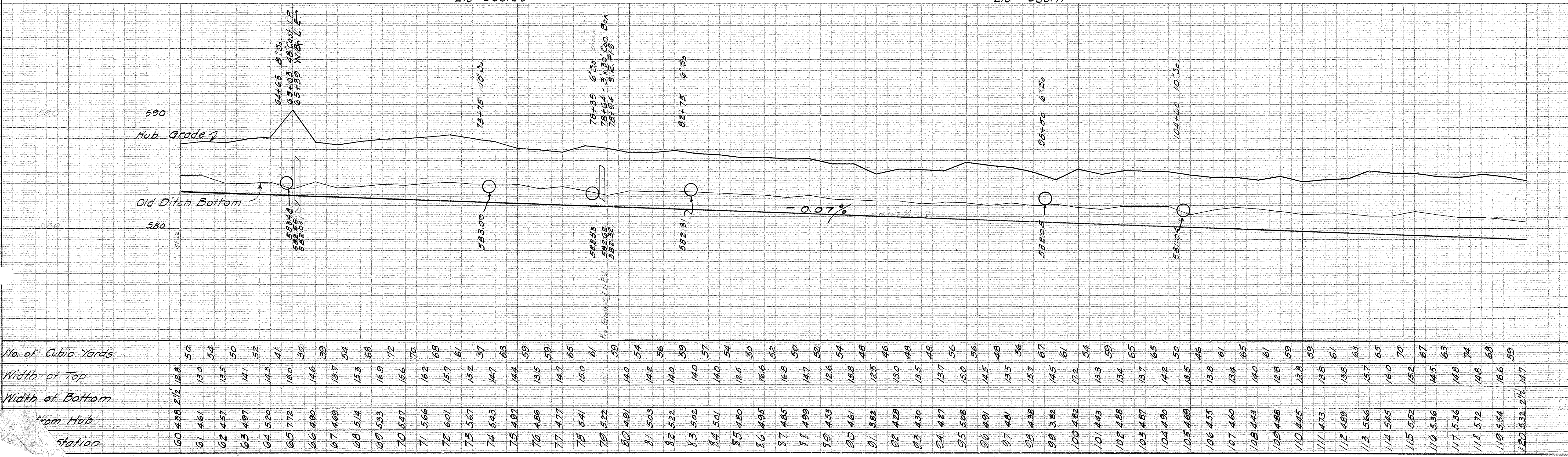
OTTAWA COUNTY

SALEM TOWNSHIP

1943

B.M. sta 78+03
 "X" No. End E.H.W.
 Ele 588.29

B.M. sta. 97+70
 Spike W. A. R.E.
 Ele 583.71



No. of Cubic Yards	50	54	50	52	41	30	39	54	68	72	70	68	61	57	63	59	61	59	54	48	46	48	48	56	56	48	56	67	61	54	59	65	65	50	46	61	65	61	59	59	61	63	74	68	59																			
Width of Top	12.8	13.0	13.5	14.1	14.3	18.0	14.6	13.7	15.3	16.9	15.6	16.2	15.7	15.2	14.7	14.4	13.5	14.7	12.5	16.6	16.8	14.7	12.6	15.8	12.5	13.0	13.5	13.7	15.0	14.5	13.5	14.5	17.2	13.3	13.4	13.7	14.2	13.5	13.8	13.4	14.0	12.8	13.8	13.8	14.5	14.5	14.8	14.8	16.6	14.7														
Width of Bottom	2 1/2	2 1/2	2 1/2	2 1/2	2 1/2	2 1/2	2 1/2	2 1/2	2 1/2	2 1/2	2 1/2	2 1/2	2 1/2	2 1/2	2 1/2	2 1/2	2 1/2	2 1/2	2 1/2	2 1/2	2 1/2	2 1/2	2 1/2	2 1/2	2 1/2	2 1/2	2 1/2	2 1/2	2 1/2	2 1/2	2 1/2	2 1/2	2 1/2	2 1/2	2 1/2	2 1/2	2 1/2	2 1/2	2 1/2	2 1/2	2 1/2	2 1/2	2 1/2	2 1/2	2 1/2	2 1/2	2 1/2																	
from Hub	4.38	4.61	4.57	4.97	5.20	7.72	4.00	4.69	5.14	5.33	5.47	5.66	6.01	5.67	5.43	4.97	4.86	4.77	5.41	5.22	4.91	5.03	5.22	5.02	5.01	4.80	4.95	4.85	4.99	4.53	4.61	3.82	4.20	4.30	4.27	3.28	4.91	4.81	4.38	3.82	4.20	4.43	4.88	4.97	4.20	4.20	4.69	4.55	4.60	4.43	4.88	4.45	4.73	4.89	5.66	5.45	5.22	5.36	5.36	5.72	5.54	5.32	2 1/2	14.7
station	60	61	62	63	64	65	66	67	68	69	70	71	72	73	74	75	76	77	78	79	80	81	82	83	84	85	86	87	88	89	90	91	92	93	94	95	96	97	98	99	100	101	102	103	104	105	106	107	108	109	110	111	112	113	114	115	116	117	118	119	120			

LEISER DITCH

OTTA WA COUNTY

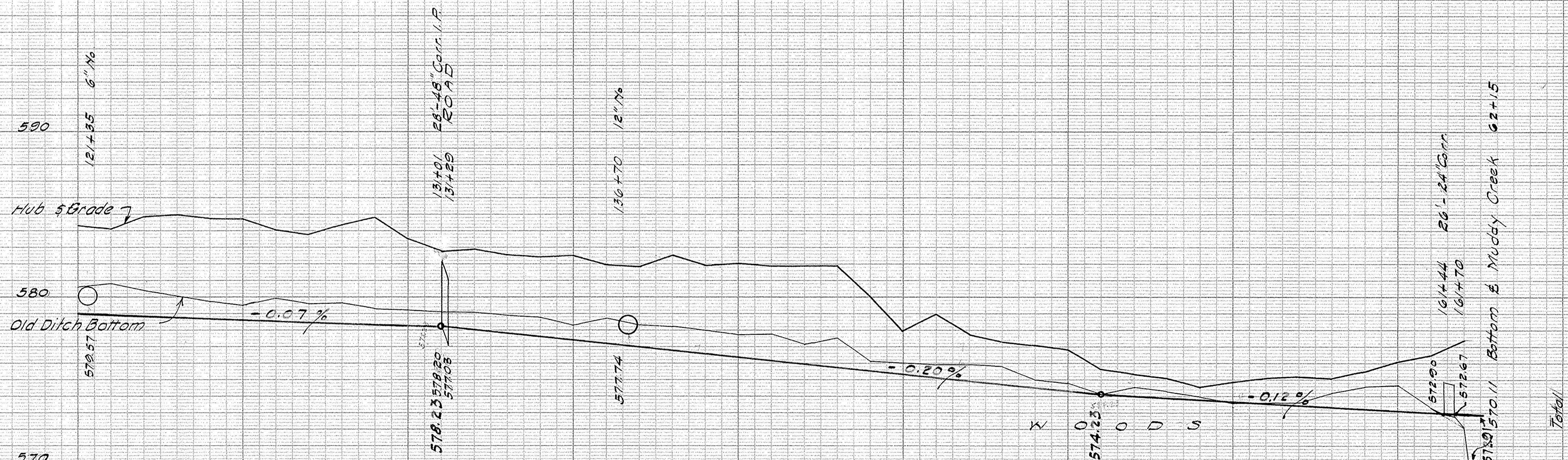
SALEM TOWNSHIP

1943

B.M. sta. 129+10
Spike Apple 70' L.E.
Elev 585.22

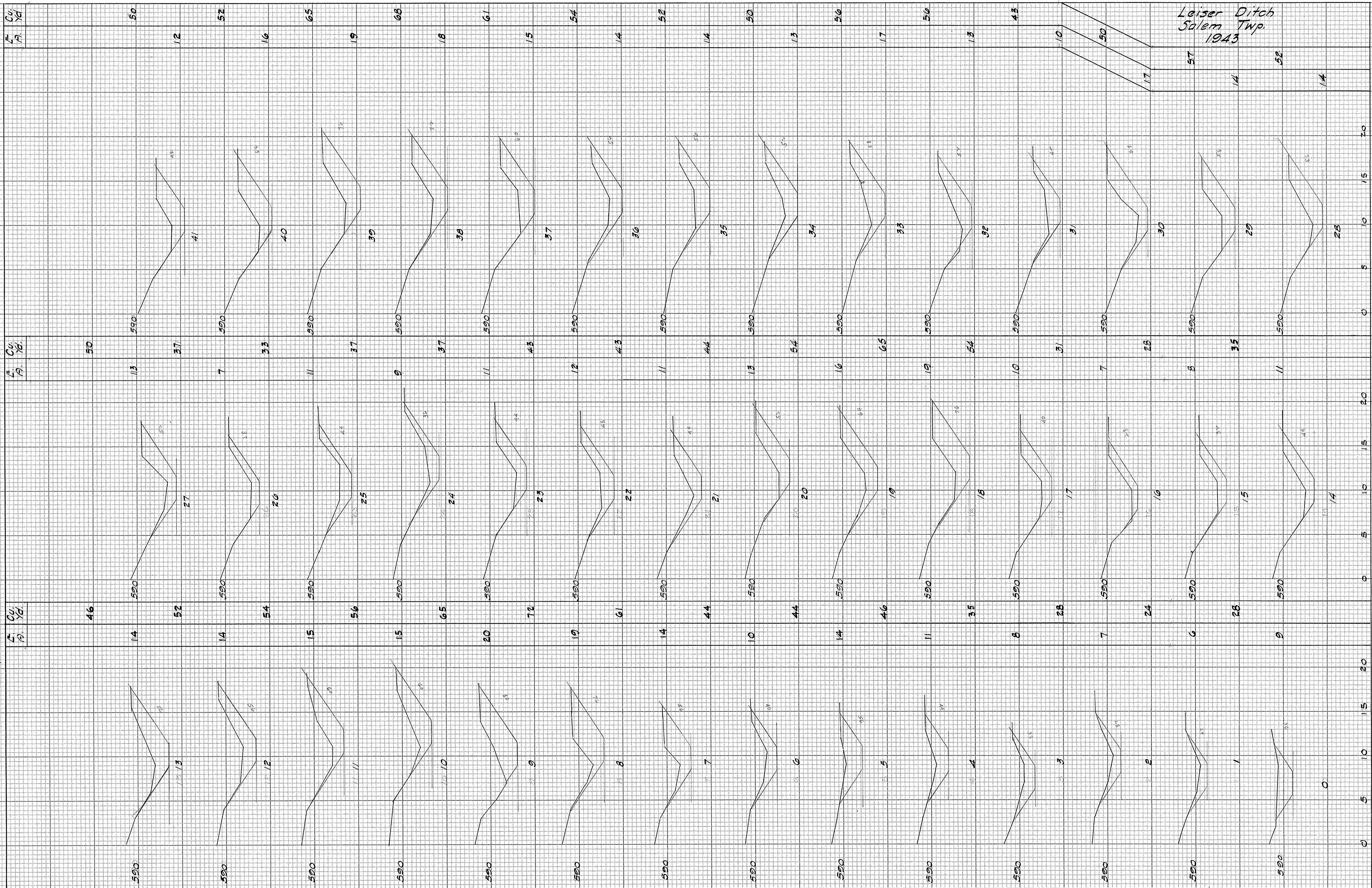
B.M. sta. 150+35
Spike W.A. 15' R.E.
Elev 577.19

Tree Row

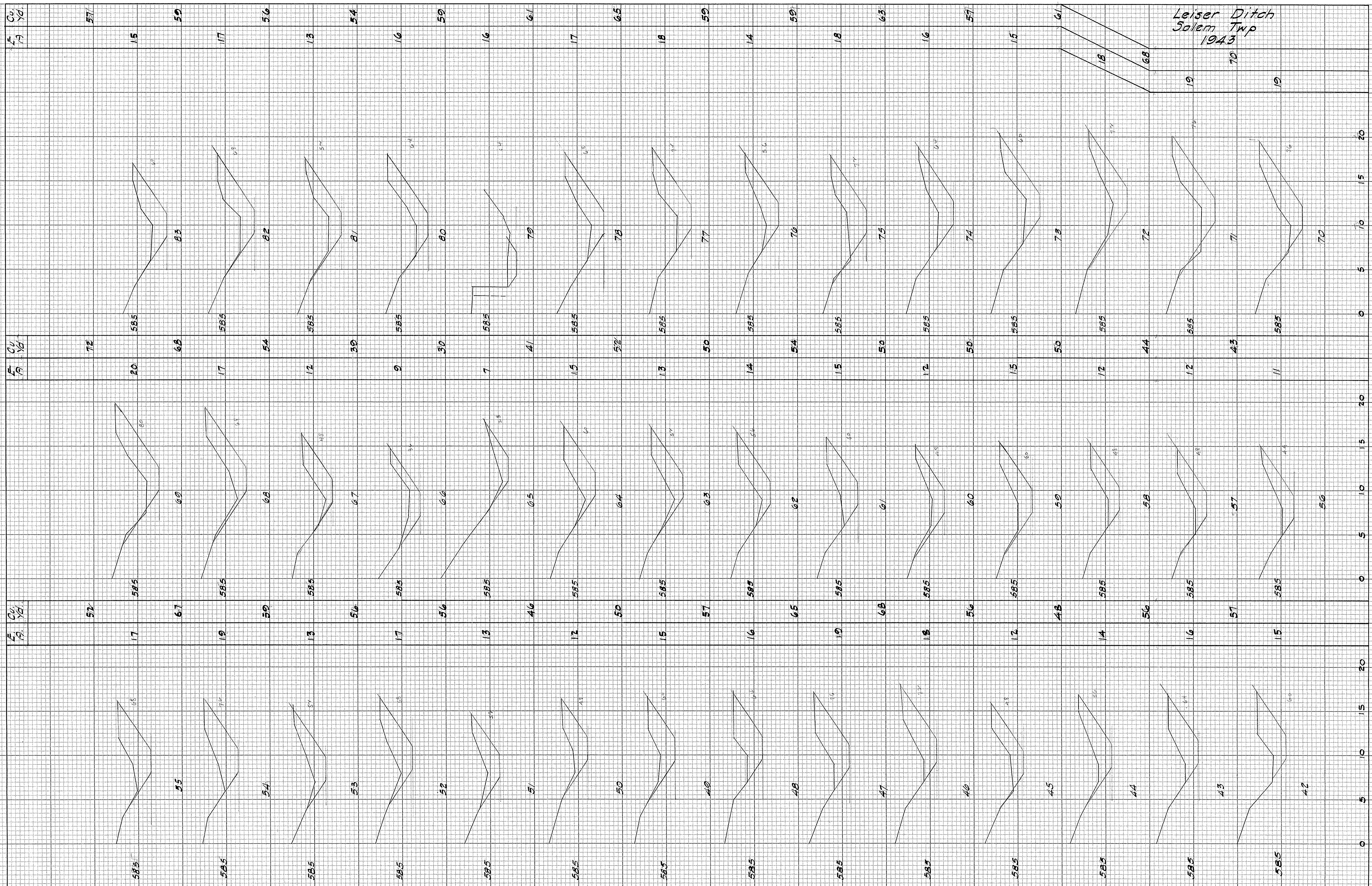


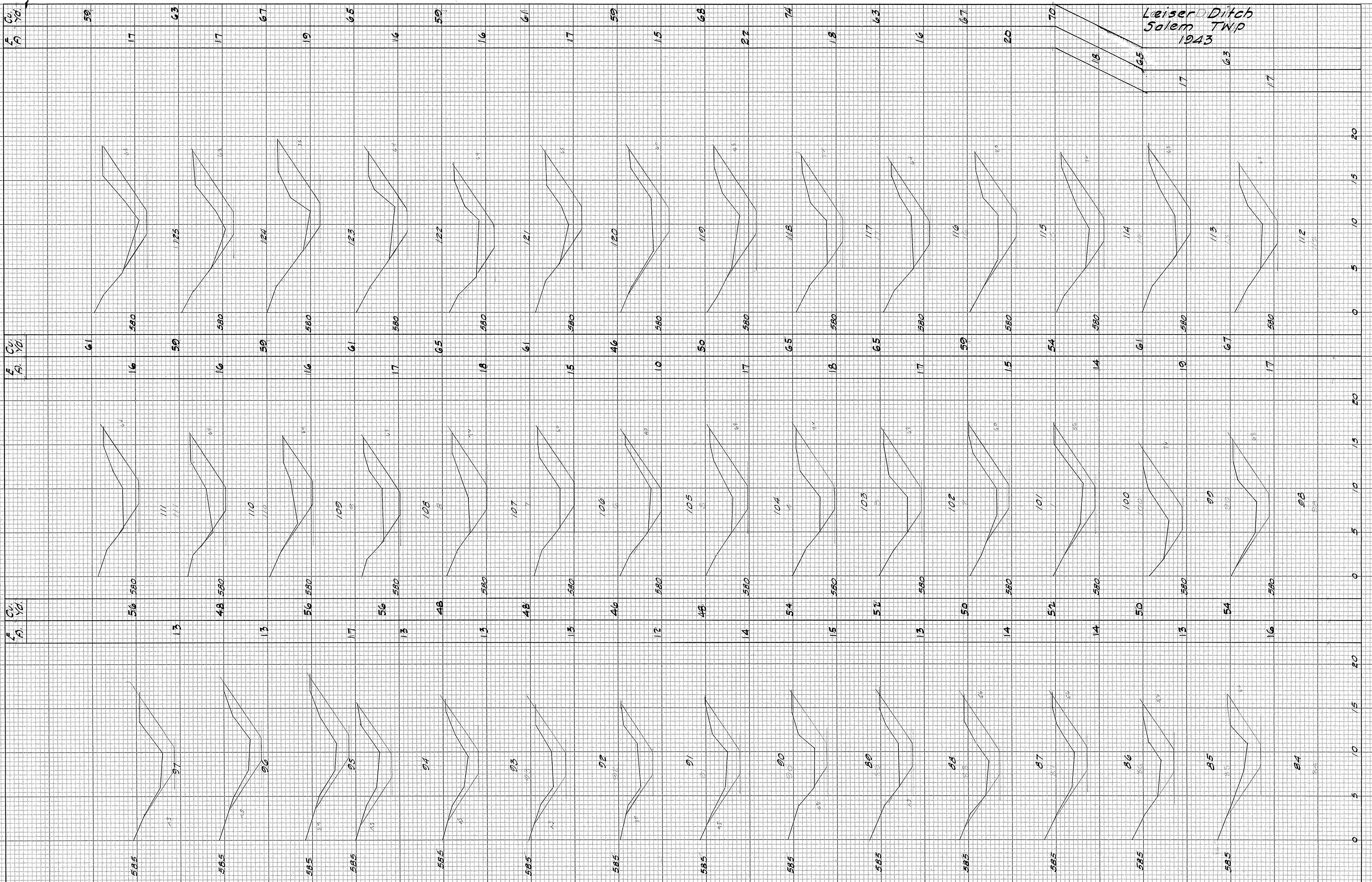
570	120	121	122	123	124	125	126	127	128	129	130	131	132	133	134	135	136	137	138	139	140	141	142	143	144	145	146	147	148	149	150	151	152	153	154	155	156	157	158	159	160	161	162	Total
No. of Cubic Yards	61	59	65	67	63	59	50	48	33	18	24	36	39	30	30	46	41	33	30	30	22	15	15	15	15	15	15	15	15	15	15	15	15	15	15	15	15	15	20	30	28	15	2	7862
Width of Top	14.7	14.7	15.2	16.7	16.0	17.0	14.8	14.5	15.0	18.7	13.3	13.6	13.0	16.2	12.8	18.2	15.0	16.8	16.4	18.6	17.3	14.4	10.2	11.7	10.4	15	15	15	15	15	15	15	15	15	15	15	15	20	30	28	15	2		
Width of Bottom	2 1/2	2 1/2	2 1/2	2 1/2	2 1/2	2 1/2	2 1/2	2 1/2	2 1/2	2 1/2	2 1/2	2 1/2	2 1/2	2 1/2	2 1/2	2 1/2	2 1/2	2 1/2	2 1/2	2 1/2	2 1/2	2 1/2	2 1/2	2 1/2	2 1/2	2 1/2	2 1/2	2 1/2	2 1/2	2 1/2	2 1/2	2 1/2	2 1/2	2 1/2	2 1/2	2 1/2	2 1/2	2 1/2	2 1/2	2 1/2	2 1/2	2 1/2	2 1/2	
Cut from Hub	5.32	5.23	5.95	6.16	6.04	6.04	5.47	5.28	5.94	6.44	5.18	4.59	4.88	4.75	4.79	5.04	4.71	4.83	5.71	5.29	5.60	5.63	5.79	6.08	4.36	2.51	3.75	2.74	2.46	2.50	2.39	1.38	1.26	1.07	0.68	1.09	1.44	1.67	1.70	2.19	2.90	3.51	4.55	
No. of Station	120	121	122	123	124	125	126	127	128	129	130	131	132	133	134	135	136	137	138	139	140	141	142	143	144	145	146	147	148	149	150	151	152	153	154	155	156	157	158	159	160	161	162	

Leiser Ditch
Salem Twp.
1943

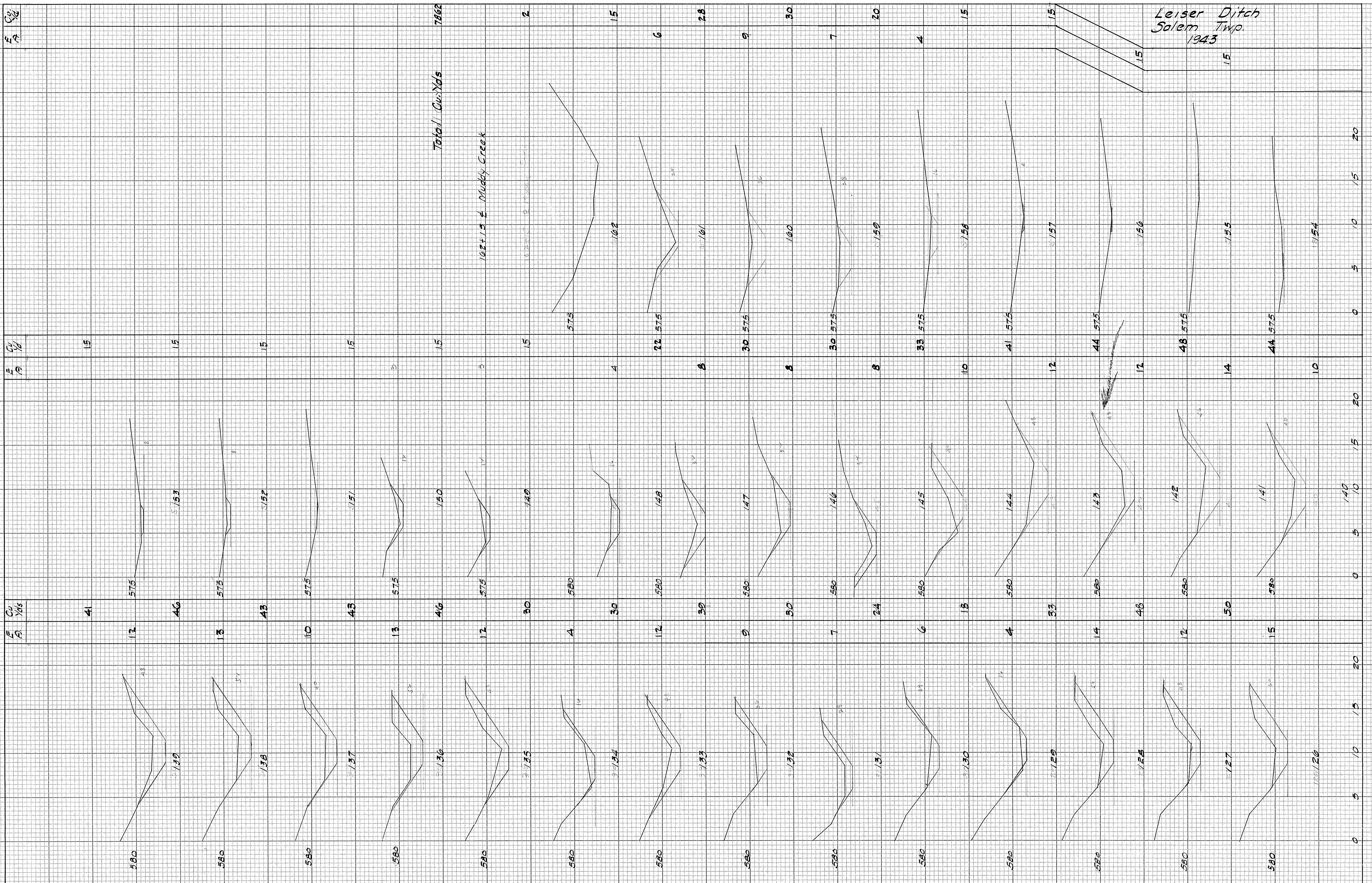


Leiser Ditch
Salem Twp
1943





Leiser Ditch
Salem TWP
1943



"Precise" CROSS SECTION 10 X 10 TO 1"
 B. & ELLIOTT CO.
 MADE IN U.S.A.

"Precise" CROSS SECTION 10 X 10 TO 1"