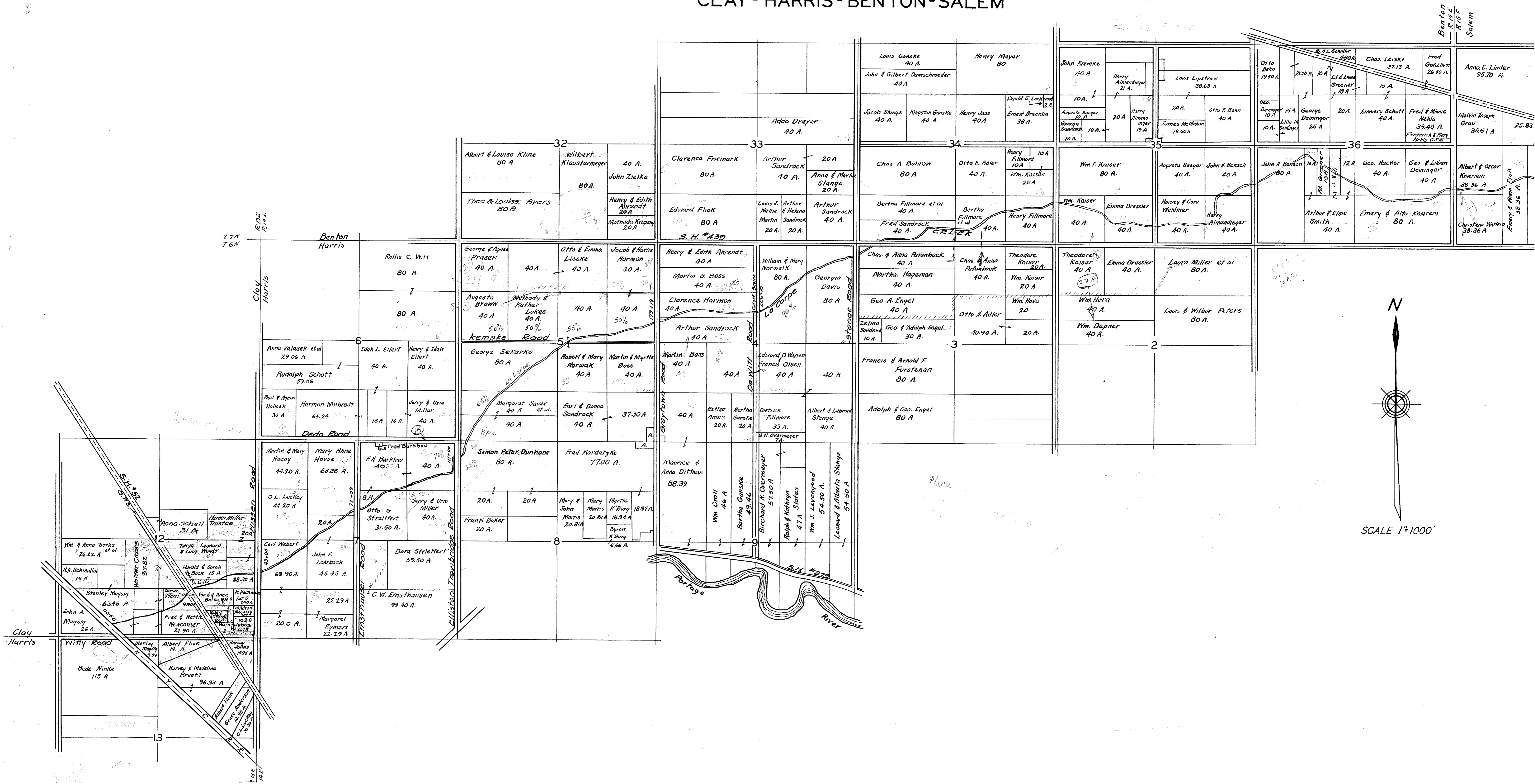


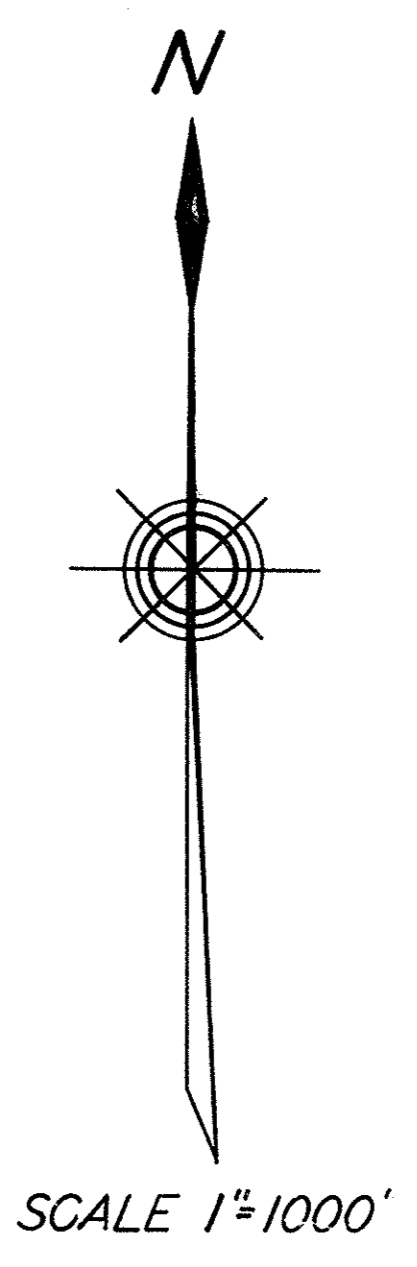
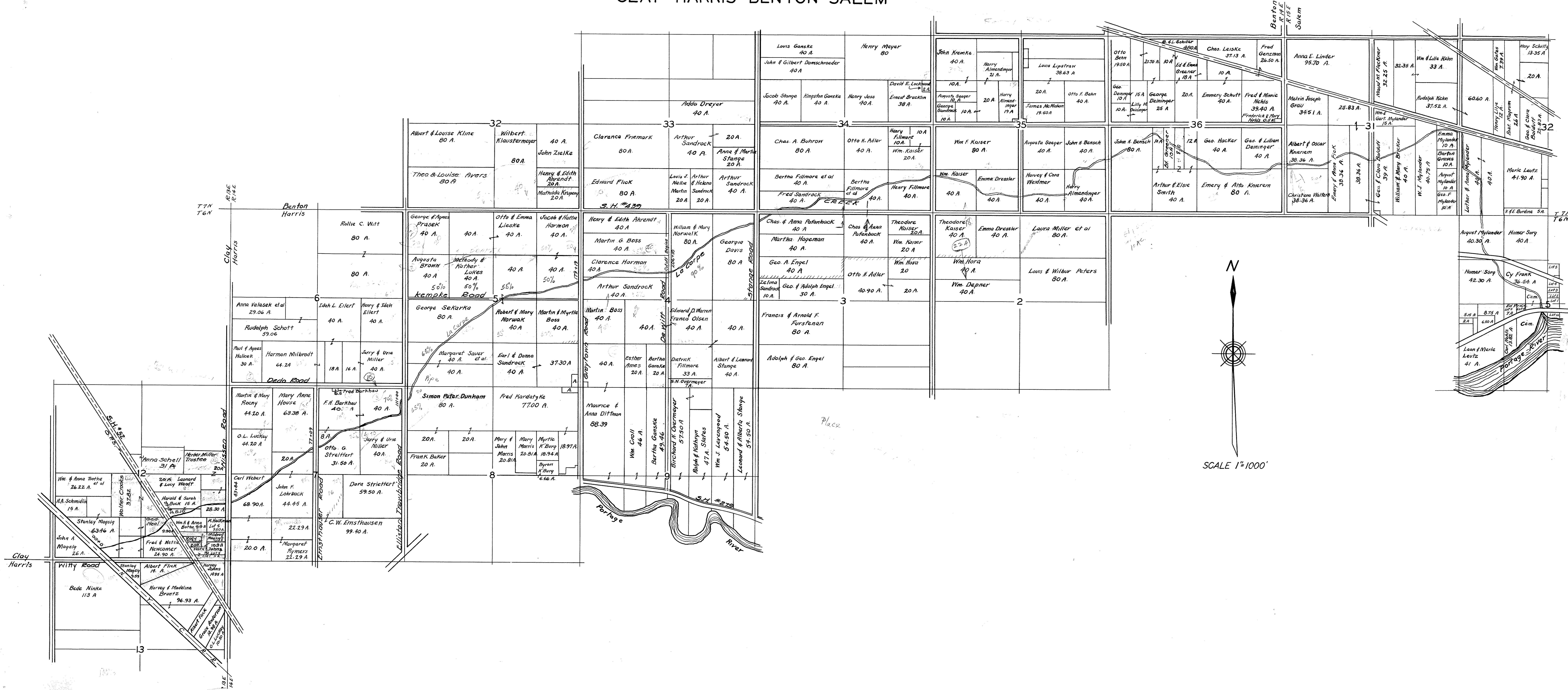
LACARPE CREEK AND PROPOSED CUTOFF CLAY - HARRIS - BENTON - SALEM



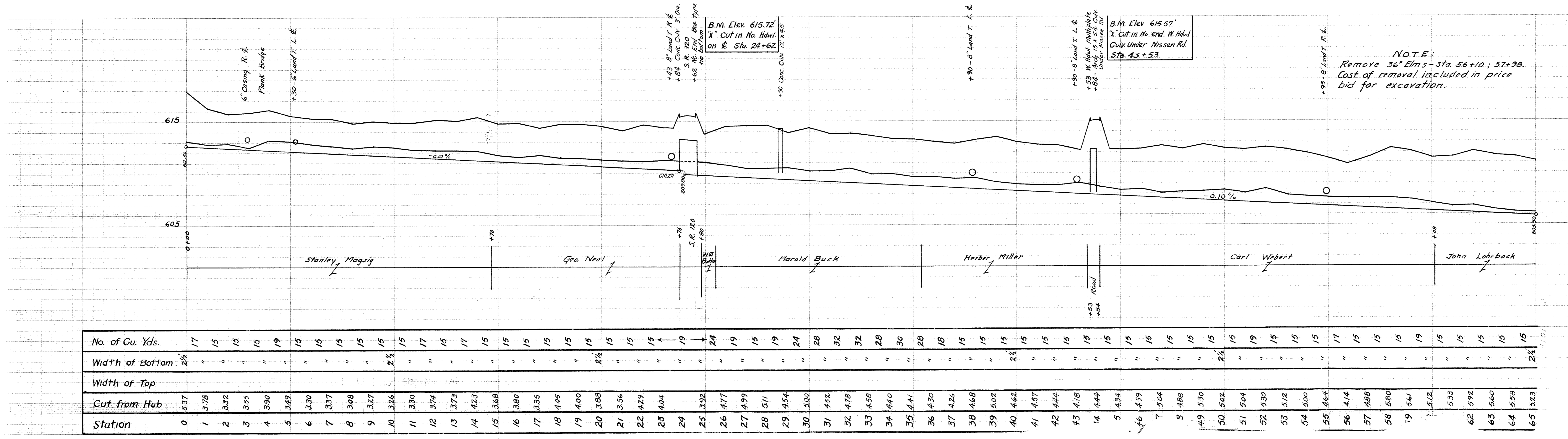
LACARPE CREEK AND PROPOSED CUTOFF

CLAY - HARRIS - BENTON - SALEM

11
7-1

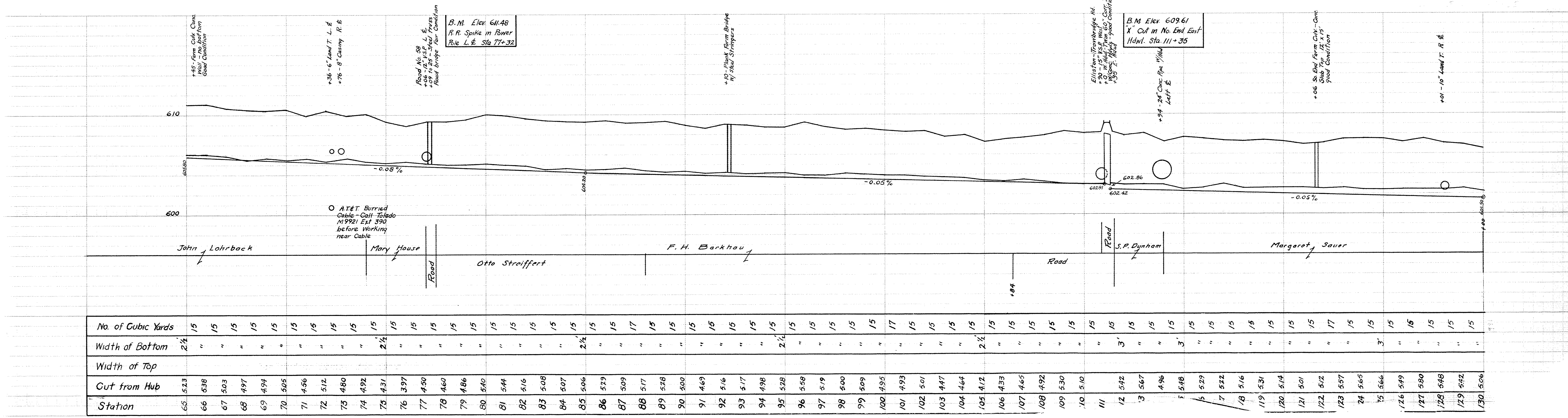


LACARPE CREEK



No. of Cu. Yds.	Width of Bottom	Width of Top	Cut from Hub	Station
17	2 1/2		6.37	0
15	"		3.78	1
15	"		3.32	2
15	"		3.55	3
19	"		3.90	4
15	"		3.49	5
15	"		3.30	6
15	"		3.37	7
15	"		3.08	8
15	"		3.27	9
15	2 1/2		3.26	10
15	"		3.30	11
17	"		3.74	12
15	"		3.73	13
17	"		4.23	14
15	"		3.68	15
15	"		3.80	16
15	"		3.35	17
15	"		4.05	18
15	"		4.00	19
15	2 1/2		3.88	20
15	"		3.56	21
15	"		4.29	22
15	"		4.04	23
19	"			24
24	"		3.92	25
19	"		4.17	26
15	"		4.99	27
15	"		5.11	28
19	"		4.54	29
24	"		5.00	30
28	"		4.52	31
32	"		4.78	32
32	"		4.58	33
28	"		4.40	34
30	"		4.41	35
28	"		4.30	36
18	"		4.24	37
15	"		4.68	38
15	"		5.02	39
15	2 1/2		4.62	40
15	"		4.57	41
15	"		4.44	42
15	"		4.18	43
15	"		4.44	44
15	"		4.34	45
15	"		4.59	46
15	"		5.04	47
15	"		4.88	48
15	"		5.30	49
15	2 1/2		5.02	50
15	"		5.04	51
15	"		5.30	52
15	"		5.12	53
15	"		5.00	54
15	"		4.64	55
17	"		4.14	56
15	"		4.88	57
15	"		5.80	58
15	"		5.61	59
19	"		5.12	60
15	"		5.33	61
15	"		5.92	62
15	"		5.60	63
15	"		5.58	64
15	2 1/2		5.23	65

LACARPE CREEK



+45 - Farm Culk Cons.
Wall - no bottom
Good Condition

+36 - 6" Land T. L. &
+76 - 8" Casing R. &

Road No. 89
+08 - 12' x 12' Spill Truss
Road bridge four condition

B.M. Elev. 611.48
R.R. Spike in Tower
Pole L. & Sta 77+32

+10 - Plank Farm Bridge
W/ steel Stringers

Elliston - Traverbridge Rd
+20 - 12' x 12' Wood Curb T.P.
+35 - 2' Road - good Condition

B.M. Elev. 609.61
X' Cut in No. End East
Hdwl. Sta. 111+35

+06 - 10" Land T. R. &
+06 - 10" Land T. R. &
Slab Top 12' x 15'
Good Condition

+01 - 10" Land T. R. &

John Lohrback

Mary House

Otto Straiffert

F. H. Barkhau

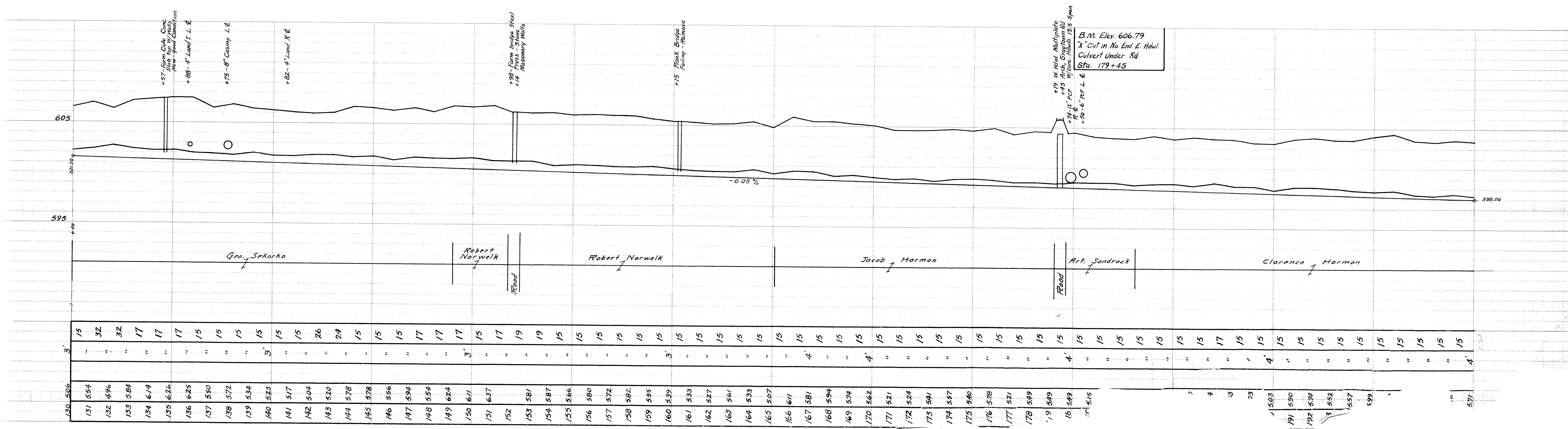
Road

S.P. Dynham

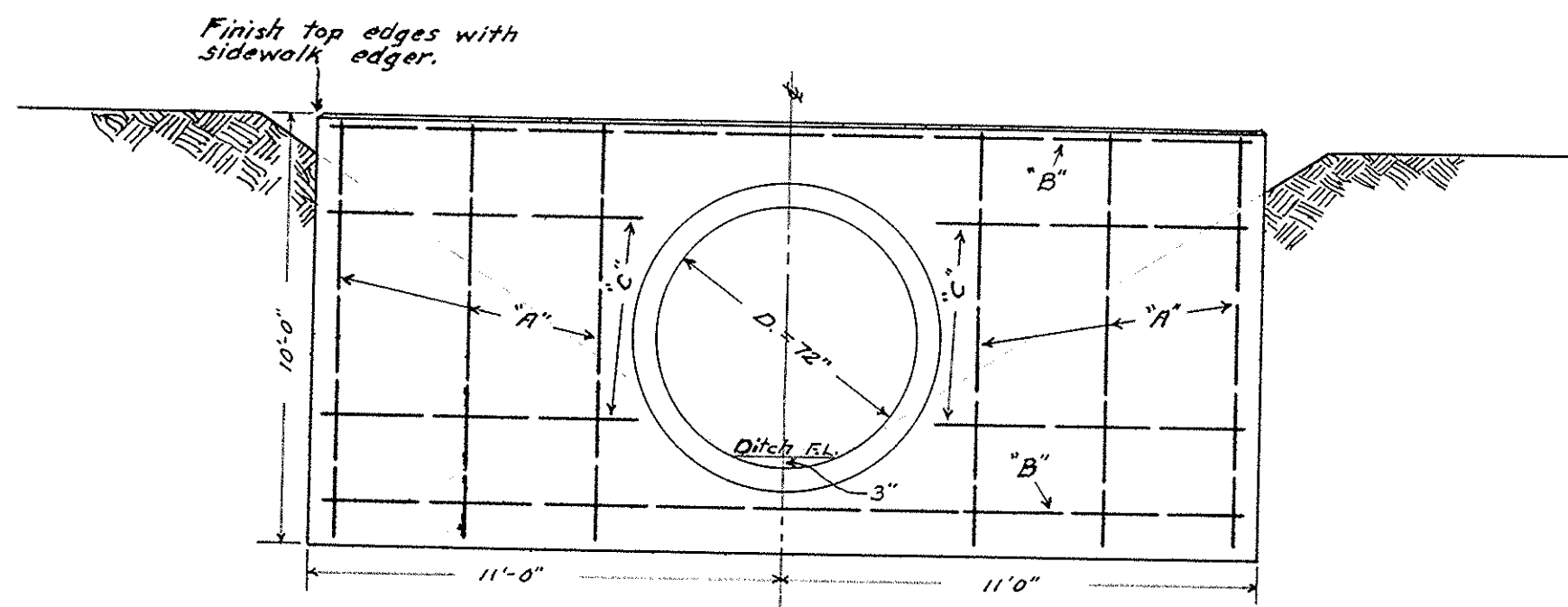
Margaret Sauer

Station	Out from Hub	Width of Top	Width of Bottom	No. of Cubic Yards
65	5.23	"	2 1/2	15
66	5.38	"	"	15
67	5.03	"	"	15
68	4.97	"	"	15
69	4.94	"	"	15
70	5.05	"	"	15
71	4.56	"	"	15
72	5.12	"	"	15
73	4.80	"	"	15
74	4.92	"	"	15
75	4.31	"	2 1/2	15
76	3.97	"	"	15
77	4.50	"	"	15
78	4.60	"	"	15
79	4.86	"	"	15
80	5.40	"	"	15
81	5.44	"	"	15
82	5.16	"	"	15
83	5.08	"	"	15
84	5.07	"	"	15
85	5.06	"	2 1/2	15
86	5.29	"	"	15
87	5.09	"	"	17
88	5.17	"	"	15
89	5.28	"	"	15
90	5.00	"	"	15
91	4.69	"	"	15
92	5.16	"	"	15
93	5.17	"	"	15
94	4.98	"	"	15
95	5.28	"	2 1/2	15
96	5.58	"	"	15
97	5.19	"	"	15
98	5.00	"	"	15
99	5.09	"	"	15
100	4.95	"	"	17
101	4.93	"	"	15
102	5.01	"	"	15
103	4.47	"	"	15
104	4.64	"	"	15
105	4.12	"	2 1/2	15
106	4.33	"	"	15
107	4.65	"	"	15
108	4.92	"	"	15
109	5.30	"	"	15
110	5.10	"	"	15
111	5.42	"	3'	15
112	5.67	"	"	15
113	5.16	"	"	15
114	5.31	"	"	15
115	5.14	"	"	15
116	5.01	"	"	15
117	5.12	"	"	17
118	5.57	"	"	15
119	5.65	"	"	15
120	5.66	"	3'	15
121	5.49	"	"	15
122	5.80	"	"	15
123	5.48	"	"	15
124	5.72	"	"	15
125	5.06	"	"	15

LACARPE CREEK



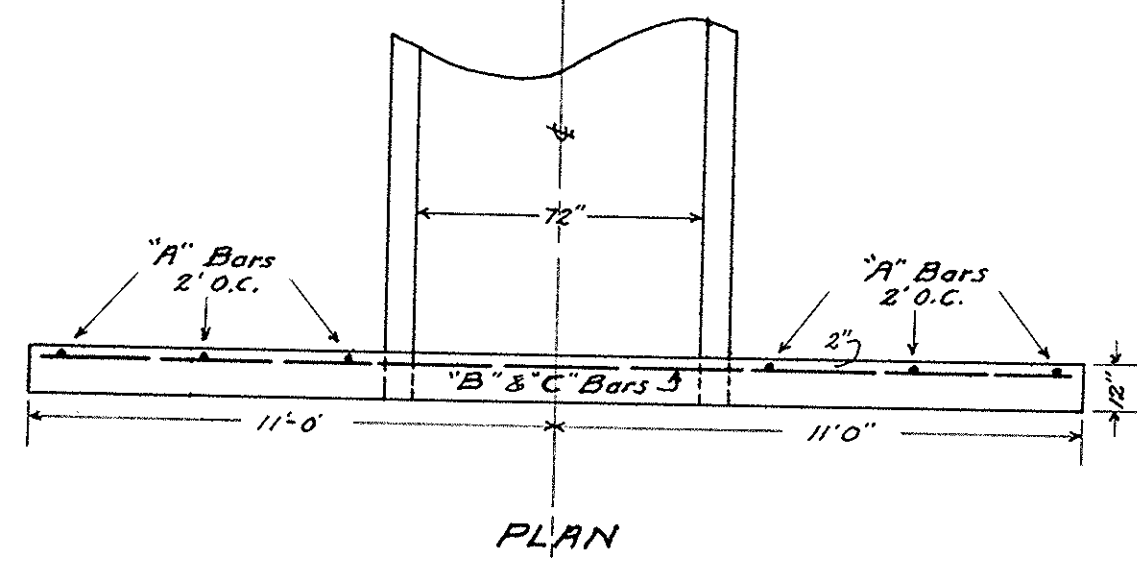
LA CARPE CREEK AND PROPOSED CUTOFF



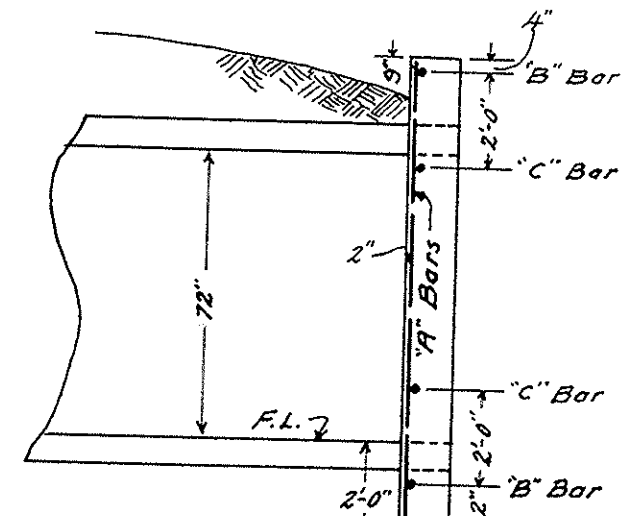
LIST OF STEEL

MARK	SIZE	NO.	LENGTH
A	1/2" φ	12	3'-8"
B	1/2" φ	4	21'-6"
C	1/2" φ	8	7'-0"

ELEVATION



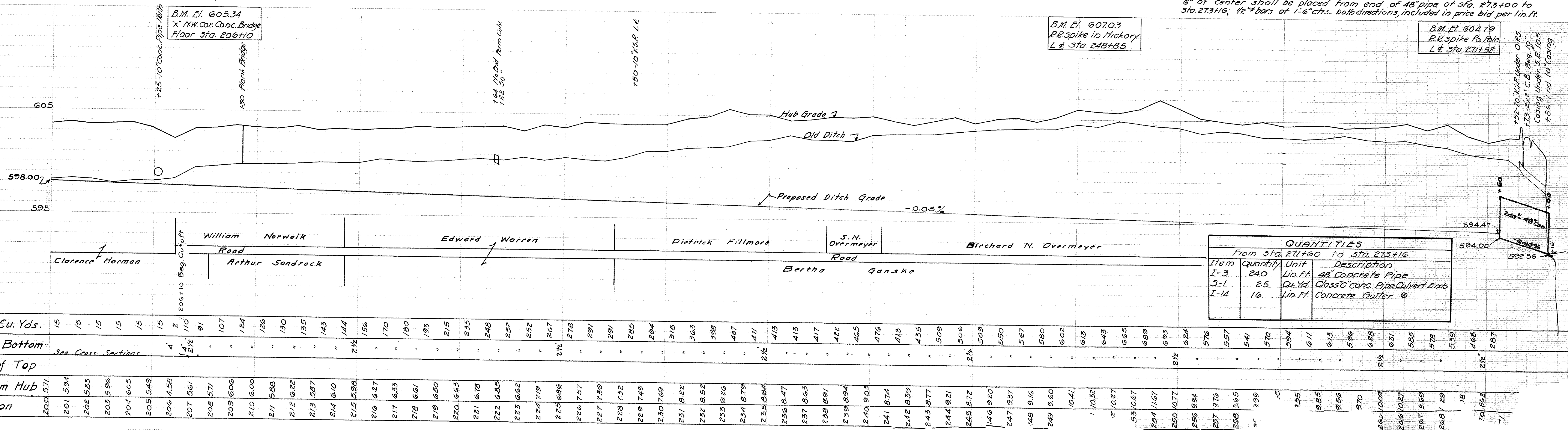
PLAN



SECTION

CULVERT: 72" Reinf. Concrete Pipe Culvert 24' long with reinf. concrete headwalls. To be located at Sta. 227. Flow Line to be 3" below grade of ditch. 13.31 cu. yds. Class "C" concrete required.

⊙ **PAVED GUTTER:** A Concrete Gutter 6'-0" wide, 6" thick, depressed 6" at center shall be placed from end of 48" pipe at Sta. 273+00 to Sta. 273+16; 1/2" bars at 1'-6" ctrs. both directions, included in price bid per lin. ft.



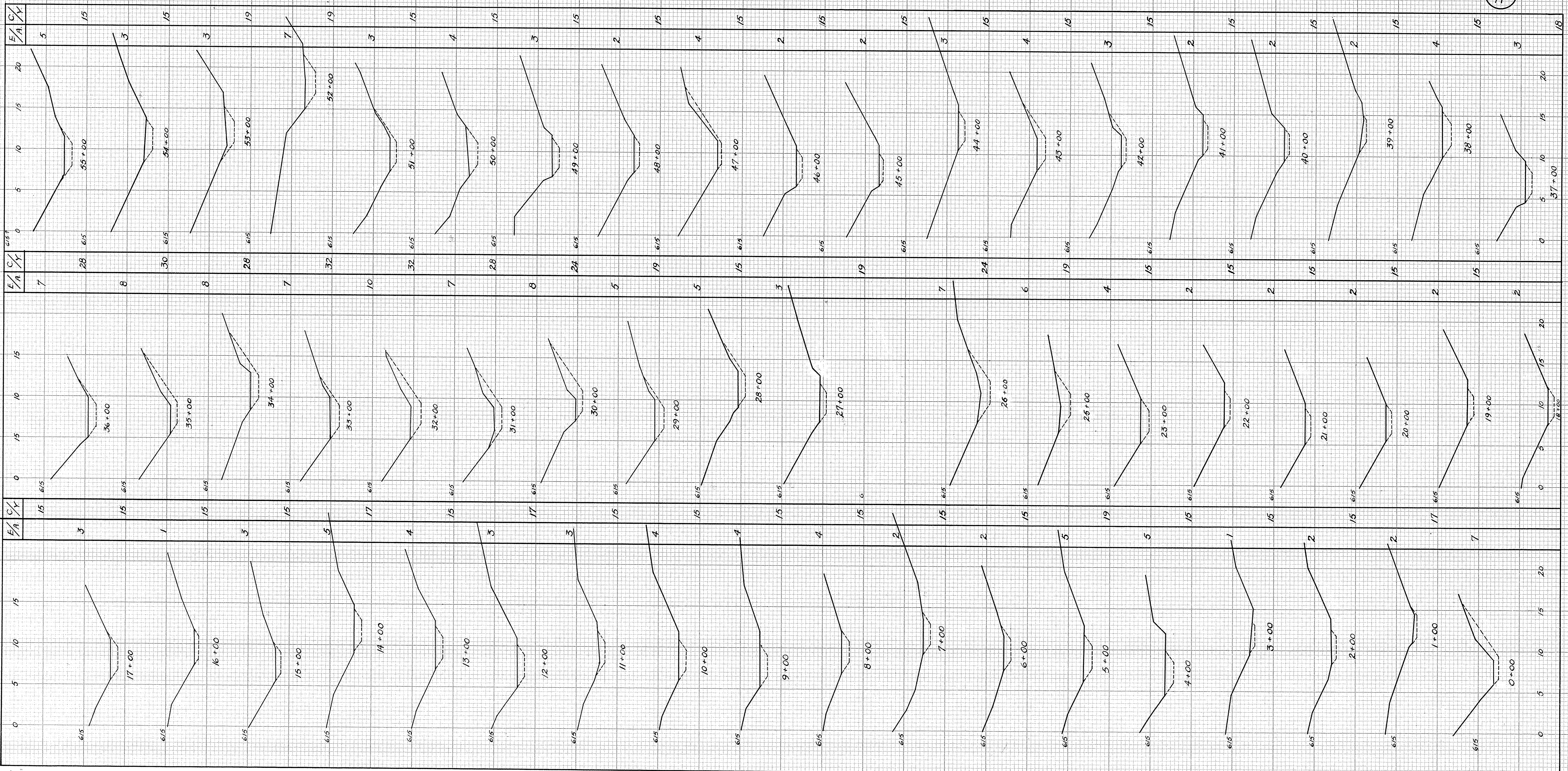
QUANTITIES
From Sta. 271+00 to Sta. 273+16

Item	Quantity	Unit	Description
I-3	240	Lin. Ft.	48" Concrete Pipe
I-1	25	Cu. Yd.	Class "C" Conc. Pipe Culvert Ends
I-14	16	Lin. Ft.	Concrete Gutter ⊙

No. of Cu. Yds.	Width of Bottom	Width of Top	Cut from Hub	Station
15	See Cross Sections		5.71	200
15			5.94	201
15			5.83	202
15			5.96	203
15			6.05	204
15			5.49	205
2	4'		4.58	206
91	2 1/2'		5.61	207
107	"		5.71	208
124	"		6.06	209
126	"		6.00	210
130	"		5.88	211
135	"		6.22	212
143	"		5.87	213
144	"		6.10	214
156	2 1/2'		5.98	215
170	"		6.27	216
190	"		6.33	217
193	"		6.61	218
215	"		6.50	219
235	"		6.63	220
248	"		6.78	221
252	"		6.85	222
252	"		6.62	223
267	"		7.19	224
278	2 1/2'		6.86	225
291	"		7.57	226
291	"		7.39	227
285	"		7.32	228
294	"		7.49	229
316	"		7.69	230
363	"		8.22	231
398	"		8.52	232
407	"		9.26	233
411	"		8.79	234
413	2 1/2'		8.84	235
413	"		8.47	236
417	"		8.65	237
422	"		8.91	238
465	"		8.94	239
476	"		9.03	240
413	"		8.74	241
435	"		8.39	242
509	"		8.77	243
506	"		9.21	244
509	2 1/2'		8.72	245
550	"		9.20	246
567	"		9.37	247
580	"		9.16	248
602	"		9.60	249
613	"		10.41	250
643	"		10.32	251
665	"		10.27	252
689	"		10.67	253
693	"		11.67	254
624	2 1/2'		10.77	255
576	"		9.94	256
557	"		9.76	257
541	"		8.65	258
570	"		8.99	259
594	6 11"		9.56	260
613	6 13"		9.70	261
596	5 9 1/2"		10.09	262
628	6 5 1/2"		10.27	263
631	6 31"		9.69	264
585	5 8 1/2"		9.29	265
578	5 7 1/2"		8.18	266
559	4 6 1/2"		8.62	267
468	2 1/2'		8.62	268
287	"		7.1	269

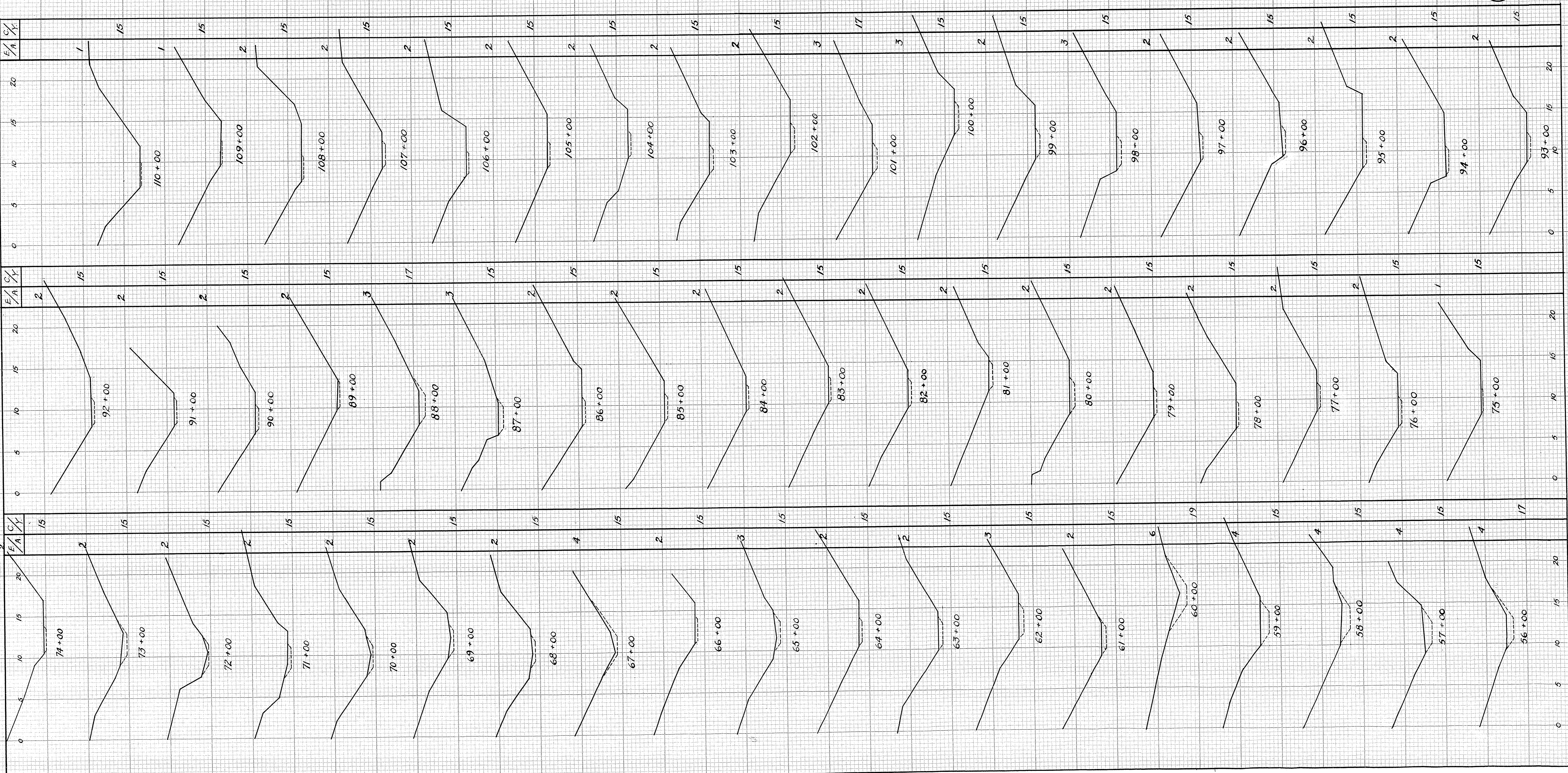
LACARPE CREEK

6
11



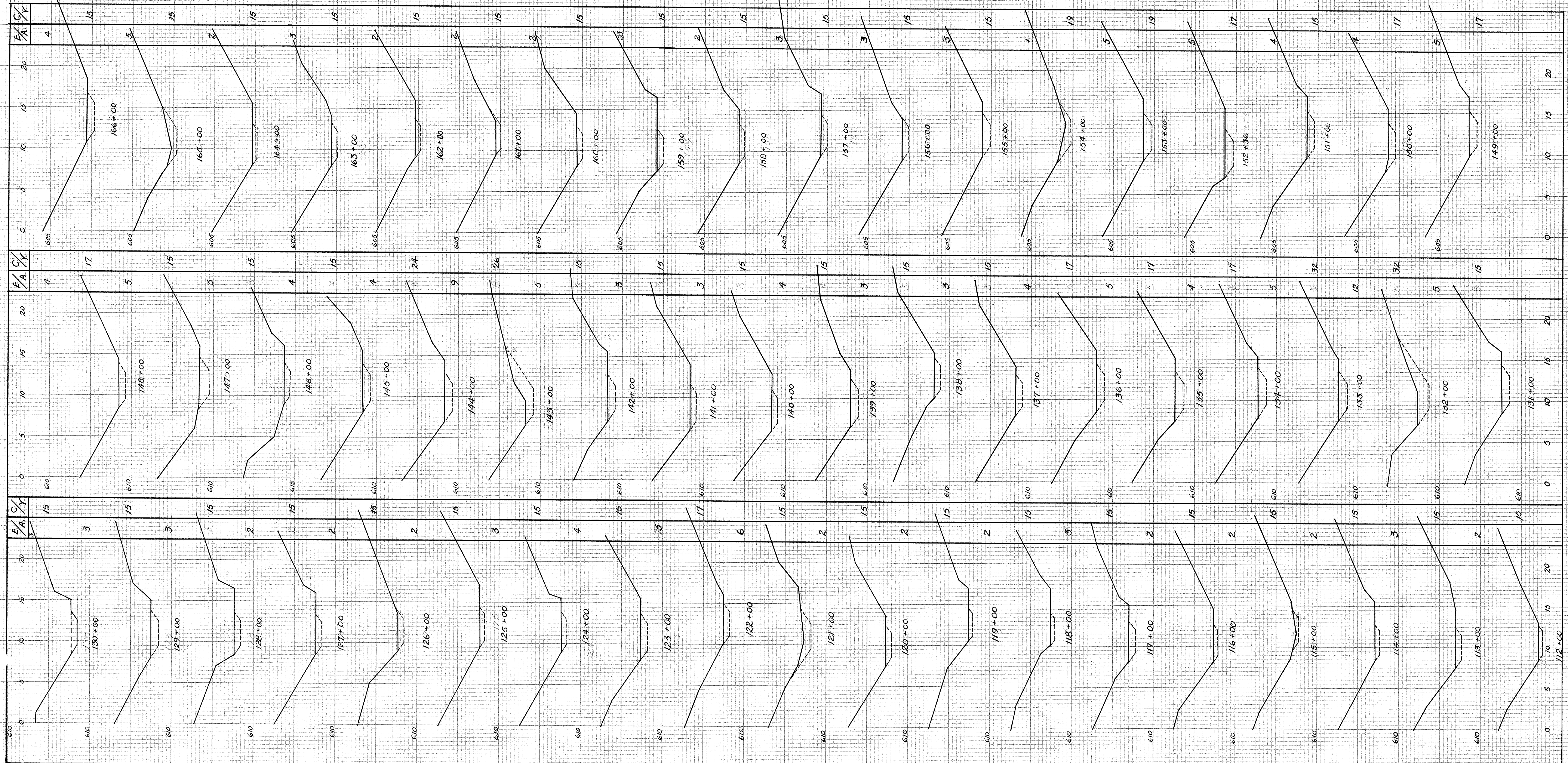
LACARPE CREEK

7
11

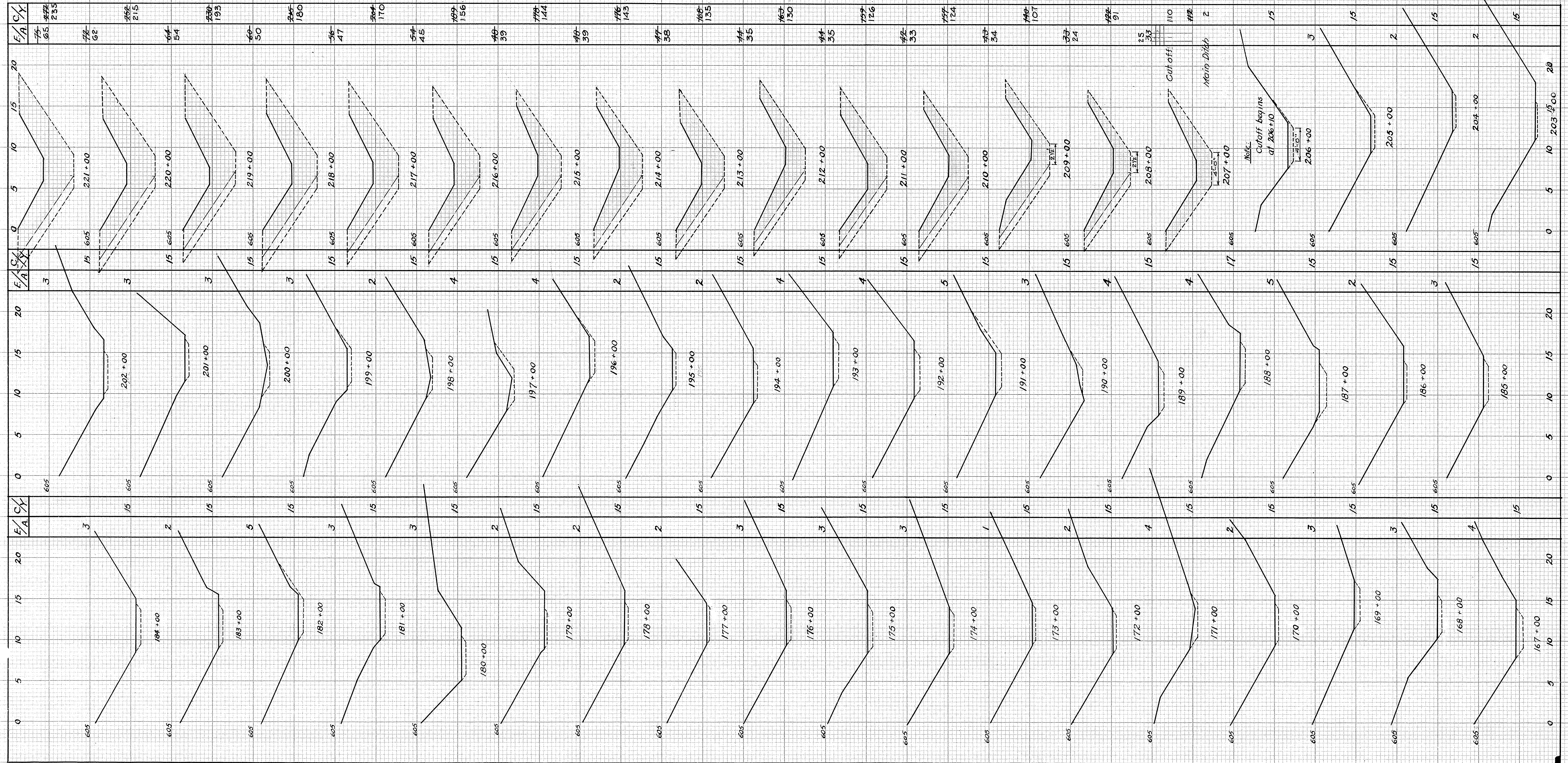


LACARPE CREEK

8
11



LACARPE CREEK, PROPOSED CUTOFF

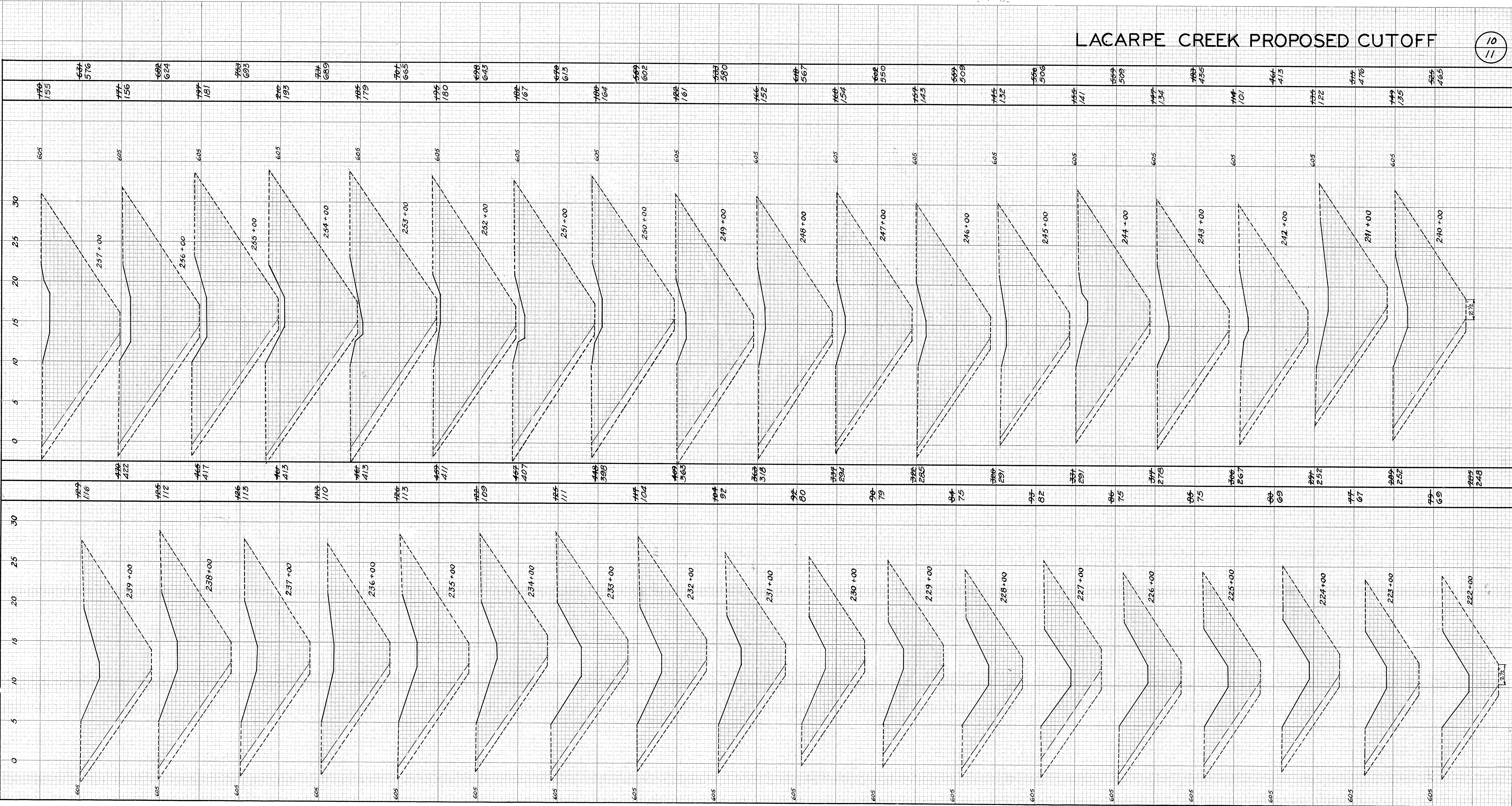


"Shedae" CROSS SECTION 10 X 10 TO 1"
 R. R. KELLY CO.
 MADE IN U.S.A.

"Shedae" CROSS SECTION 10 X 10 TO 1"
 R. R. KELLY CO.
 MADE IN U.S.A.

LACARPE CREEK PROPOSED CUTOFF

10
11



Vertical CROSS SECTION 10 X 10 TO 1"
B & SILLIOTT CO.
MADE IN U.S.A.

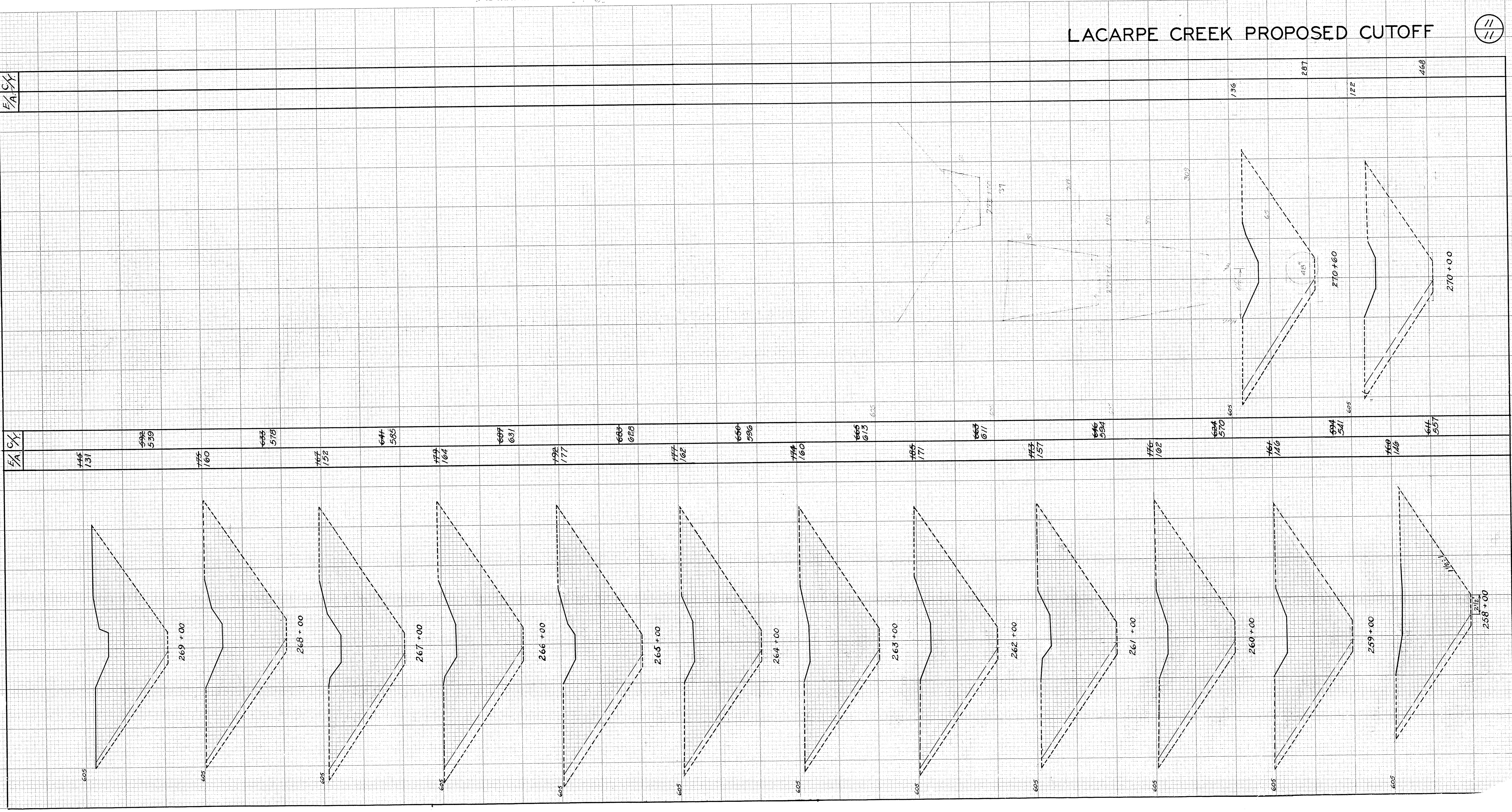
Vertical CROSS SECTION 10 X 10 TO 1"
B & SILLIOTT CO.
MADE IN U.S.A.

LACARPE CREEK PROPOSED CUTOFF

11
11

E/A
C/X

E/A
C/X



"Sheela" CROSS SECTION 10 X 10 TO 1"
S. K. HILBERT CO.
MADE IN U.S.A.

"Sheela" CROSS SECTION 10 X 10 TO 1"
S. K. HILBERT CO.
MADE IN U.S.A.