

JOHN BLAUSEY JOINT COUNTY DITCH

OTTAWA

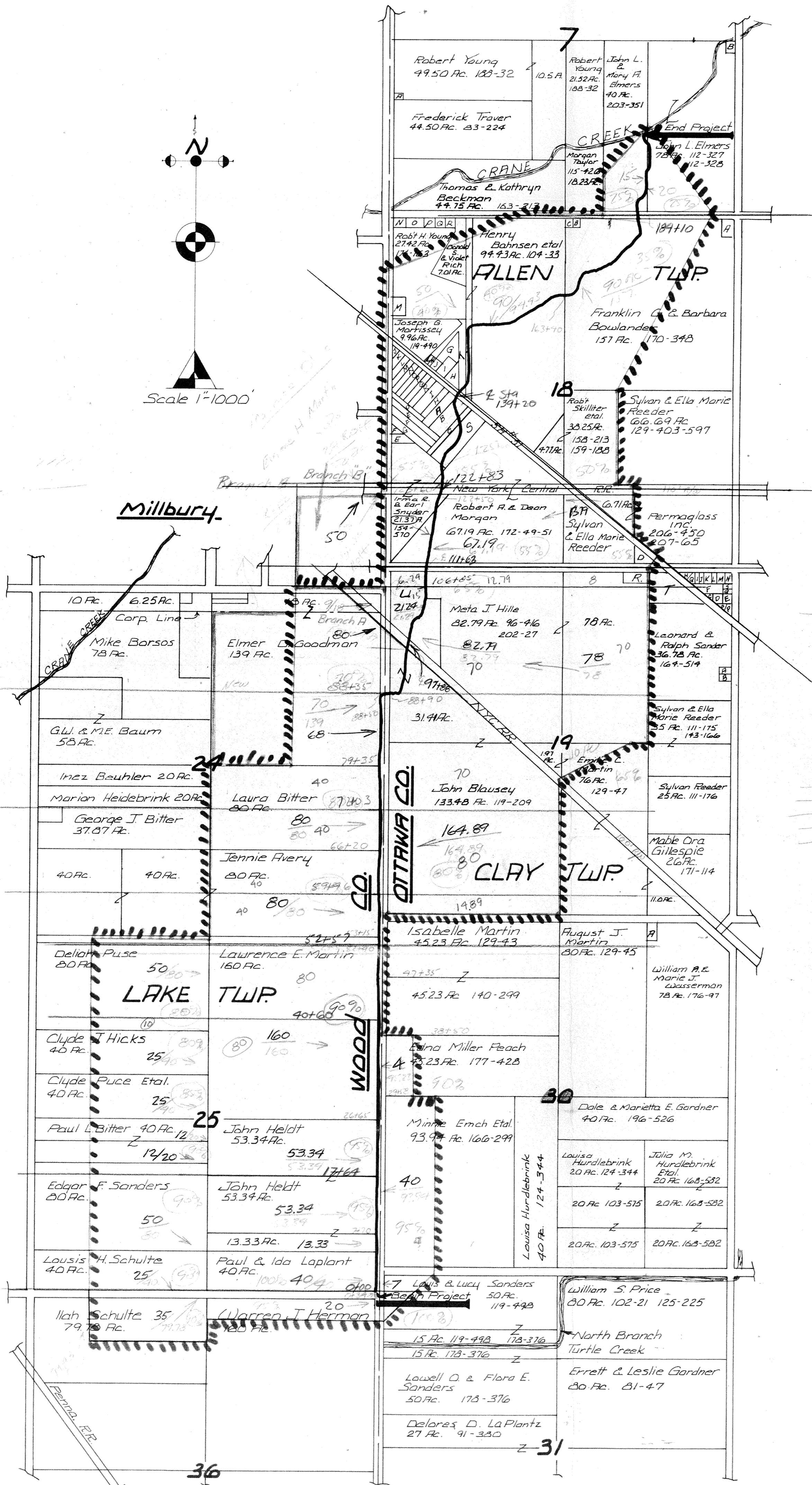
WOOD

CLAY TWP.
SEC. 19-30-31

ALLEN TWP.
SEC. 7-18

LAKE TOWNSHIP
SEC. 24-25-36

1960



Sec.	Parcel	Owner	Size
7	A	Ellsworth F. Blausey	175' x 20'
7	B	Orville Rudenkompe	7rd x 6rd.
30	A	Leo H. Wasserman	150' x 250'
19	A	Ralph J. Jander	.61 Ac.
"	B	Leonard H. & Lois H. Sander	.61 Ac.
"	C	Leo & Aicy L. Fenton	.34 Ac.
"	D	Joseph Mesko	.79 Ac.
"	E	"	.127 Ac.
"	F	Robert & Alfredo Roberts	.20 Ac.
"	G	Chester H. Norden	.32 Ac.
"	H	Clarence Leslie	.52 Ac.
"	I	Stanley J. & Mildred Hall	1.00 Ac.
"	J	Louis Dannally	.56 Ac.
"	K	Stanley J. & Mildred Hall	1.00 Ac.
"	L	Iva Mae Cooper	.42 Ac.
"	M	Stanley J. & Mildred Hall	1.00 Ac.
"	N	Harold & Pearl Engelman	1.00 Ac.
"	O	Walter E. & Violet M. Ryor	.60 Ac.
19	P	Kenneth & Florence Bloomfield	.60 Ac.
19	Q	Fred G. Widmer	1.38 Ac.
"	R	Herman & Margie Taylor	2.00 Ac.
"	S	Arthur Lee & Patsy P. Downey	.81 Ac.
"	T	James & Lillian Getzcl	8.00 Ac.
19	U	Lar & Erma Snyder	21.24 Ac.
19	A	George M. Glone	1 Ac.
"	B	Ralph A. & Jean Baker	1 Ac.
"	C	James E. & Carolyn R. Puehler	1 Ac.
"	D	Chas. O. & Violet Smith	1.66 Ac.
"	E	James A. Surprise	1.00 Ac.
"	F	Anna B. & Joseph Fuerst	.50 Ac.
"	G	Herman & Cornelia Young	2.04 Ac.
"	H	"	1.71 Ac.
"	I	Sharon Ann Hugh	1.61 Ac.
"	J	Richard A. & Anna W. Hugh	.62
"	K	Dewey M. Widmer Etol.	.22
"	L	"	.45
"	M	Joseph A. Nemeth	1.44
"	N	Robert Lee & Janice Ann Coupe	.80
"	O	Joseph & Mary Transzsi	1.60 Ac.
"	P	"	"
"	Q	John Griffin	.60 Ac.
"	R	"	.60 Ac.
"	S	Emer D. & Myrtle E. Welch	8.23 Ac.
"	T	Kate Young	8.87 Ac.
Sec.	Parcel	Hille Farms Sub.	Size
18	A	Milan B. & Elizabeth Spitzer	2.19 Ac.
"	B	Clarence E. & Bernice Mallett	1.94 Ac.
"	C	Carl G. & Erma Norden	1.47 Ac.
"	D	Harold E. & Sadie W. Hanthorn	.87 Ac.
"	E	Albert & Elsie S. Manzek	2.07 Ac.
"	F	"	1.87 Ac.
"	G	Richard S. & Virginia Thornton	1.63 Ac.
"	H	Harold E. & Sadie W. Hanthorn	1.25 Ac.
"	I	Albert C. & Elsie S. Manzek	8.94 Ac.
"	J	Michael G. Lillian Pasco	1.00 Ac.
"	K	"	1.00 Ac.
"	L Pt.	Richard H. & Pauline H. Spafford	1.75 Ac.
"	M. Pt.	"	"
"	N	Albert C. & Elsie S. Manzek	0.999 Ac.
"	P	"	1.004
"	Q	"	0.996
"	R	"	1.001
"	S	"	0.992
18	L & M Pt.	"	0.31 Ac.

Size Pipe @ Sta
135+82 to Replace
Plank top Bridge
1500 Acres
Req'd 72"

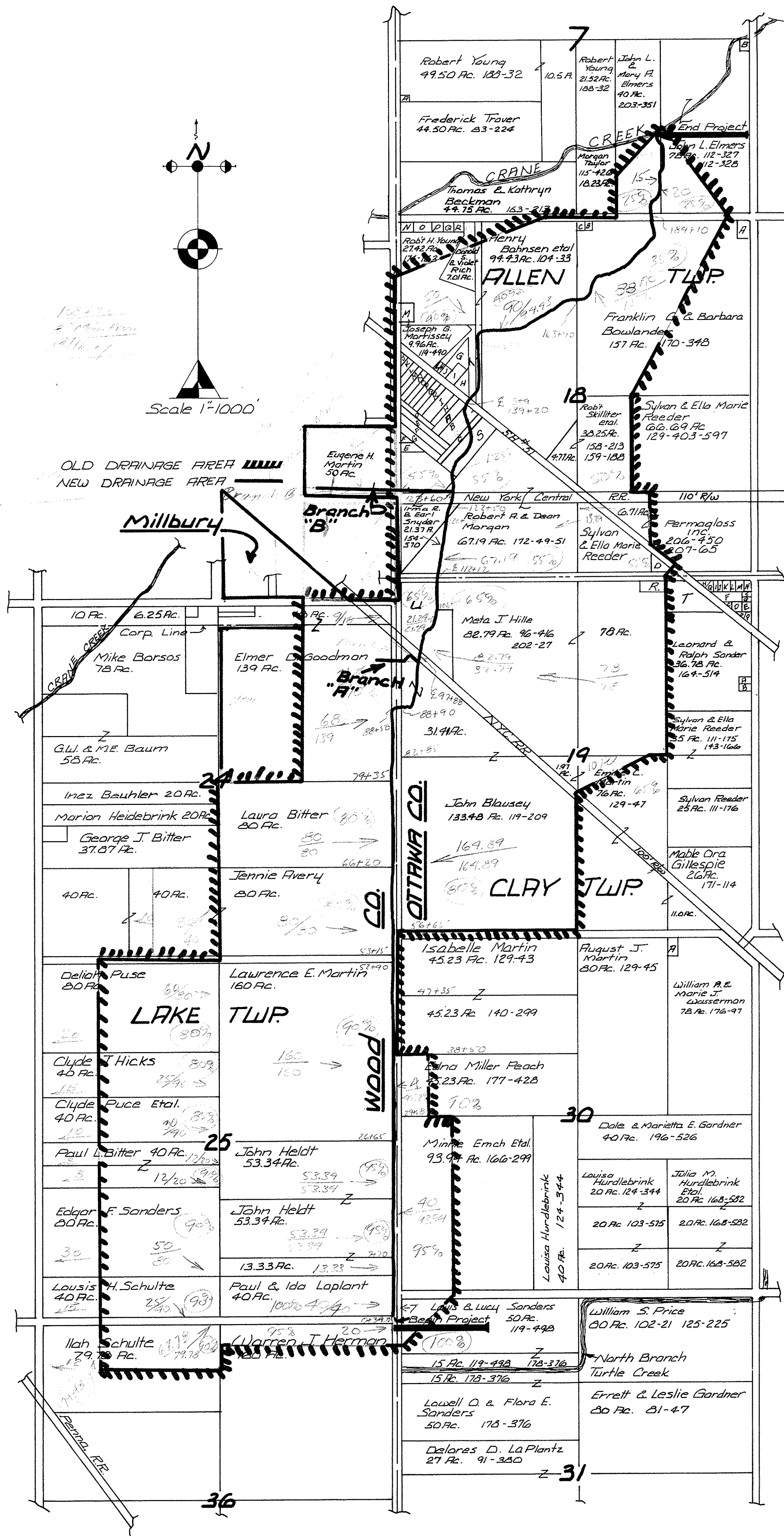
JOHN BLAUSEY JOINT COUNTY DITCH

OTTAWA
CLAY TWP.
SEC. 19-30-31

ALLEN TWP.
SEC. 7-18

WOOD
LAKE TOWNSHIP
SEC. 24-25-36

1960



INDEX TO SMALL PARCELS			
Sec.	Parcel	Owner	Size
7	A	Ellsworth F. Blausey	175' x 80'
7	B	Orville Futsenkamps	7rd x 6rd
30	A	Leo H. Wasserman	150' x 250'
19	A	Ralph J. Sander	.61 Ac.
"	B	Leonard H. & Lois A. Sander	.61 Ac.
"	C	Leo & Alky L. Fenton	.34 Ac.
"	D	Joseph Mesko	.79 Ac.
"	E	"	1.27 Ac.
"	F	Robert & Alfredo Roberts	2.0 Ac.
"	G	Chester H. Norden	.52 Ac.
"	H	Clarence Leslie	.52 Ac.
"	I	Stanley J. & Mildred Hall	1.00 Ac.
"	J	Louis Donnelly	.56 Ac.
"	K	Stanley J. & Mildred Hall	1.00 Ac.
"	L	Iva Mae Cooper	.42 Ac.
"	M	Stanley J. & Mildred Hall	1.00 Ac.
"	N	Harold & Pearl Engleman	1.00 Ac.
"	O	Walter E. & Violet M. Ryor	.60 Ac.
19	P	Kenneth & Florence Bloomfield	.60 Ac.
19	Q	Fred G. Widmer	1.38 Ac.
"	R	Herman & Margie Taylor	2.00 Ac.
"	S	Arthur Lee & Patsy R. Downey	.81 Ac.
"	T	James & Lillian Wetzcl	2.00 Ac.
19	U	Earl & Erma Snyder	212.4 Ac.
19	A	George M. Glone	1.1 Ac.
"	B	Ralph A. & Jean Baker	1.1 Ac.
"	C	James E. & Carolyn R. Puehler	1.1 Ac.
"	D	Chas. O. & Violet Smith	1.60 Ac.
"	E	James P. Suprise	1.0 Ac.
"	F	Finna B. & Joseph Fuerst	.50 Ac.
"	G	Herman & Cornelia Young	2.09 Ac.
"	H	"	1.71 Ac.
"	I	Sharon Ann Hugh	1.61 Ac.
"	J	Richard A. & Lillian W. Hugh	.60
"	K	Dewey M. Widmer Etal.	.22
"	L	"	.45
"	M	Joseph A. Nemeth	1.44
"	N	Robert Lee & Janice Ann Coude	.30
"	O	Joseph & Mary Tranaszi	1.60 Ac.
"	P	"	"
"	Q	John Griffin	.60 Ac.
"	R	"	.60 Ac.
"	S	Emer D. & Myrtle E. Welch	2.23 Ac.
"	T	Kate Young	3.87 Ac.
Sec.	Parcel	Hille Farms Sub.	Size
18	A	Milton B. & Elizabeth Spittler	2.19 Ac.
"	B	Clarence E. & Bernice Mallett	1.94 Ac.
"	C	Carl J. & Elma Norden	1.47 Ac.
"	D	Harold E. & Sadie W. Hankara	.87 Ac.
"	E	Albert & Elsie S. Manzek	2.097 Ac.
"	F	Mary & John W. Meyer	1.879 Ac.
"	G	Richard S. & Virginia Thornton	1.63 Ac.
"	H	Harold E. & Sadie W. Hankara	1.252 Ac.
"	I	Albert & Elsie S. Manzek	2.993 Ac.
"	J	Michael & Lillian Pasco	1.00 Ac.
"	K	"	1.00 Ac.
"	L Pt.	Richard H. & Pauline H. Spafford	1.75 Ac.
"	M Pt.	"	"
"	N	Albert C. & Elsie S. Manzek	0.999 Ac.
"	O	"	1.004
"	P	"	0.996
"	Q	"	1.001
"	R	"	0.992
18	L & M Pt.	"	0.31 Ac.

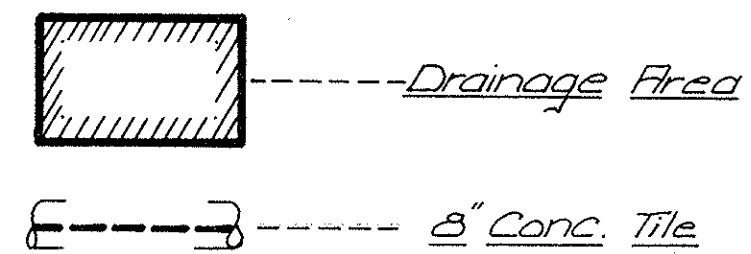
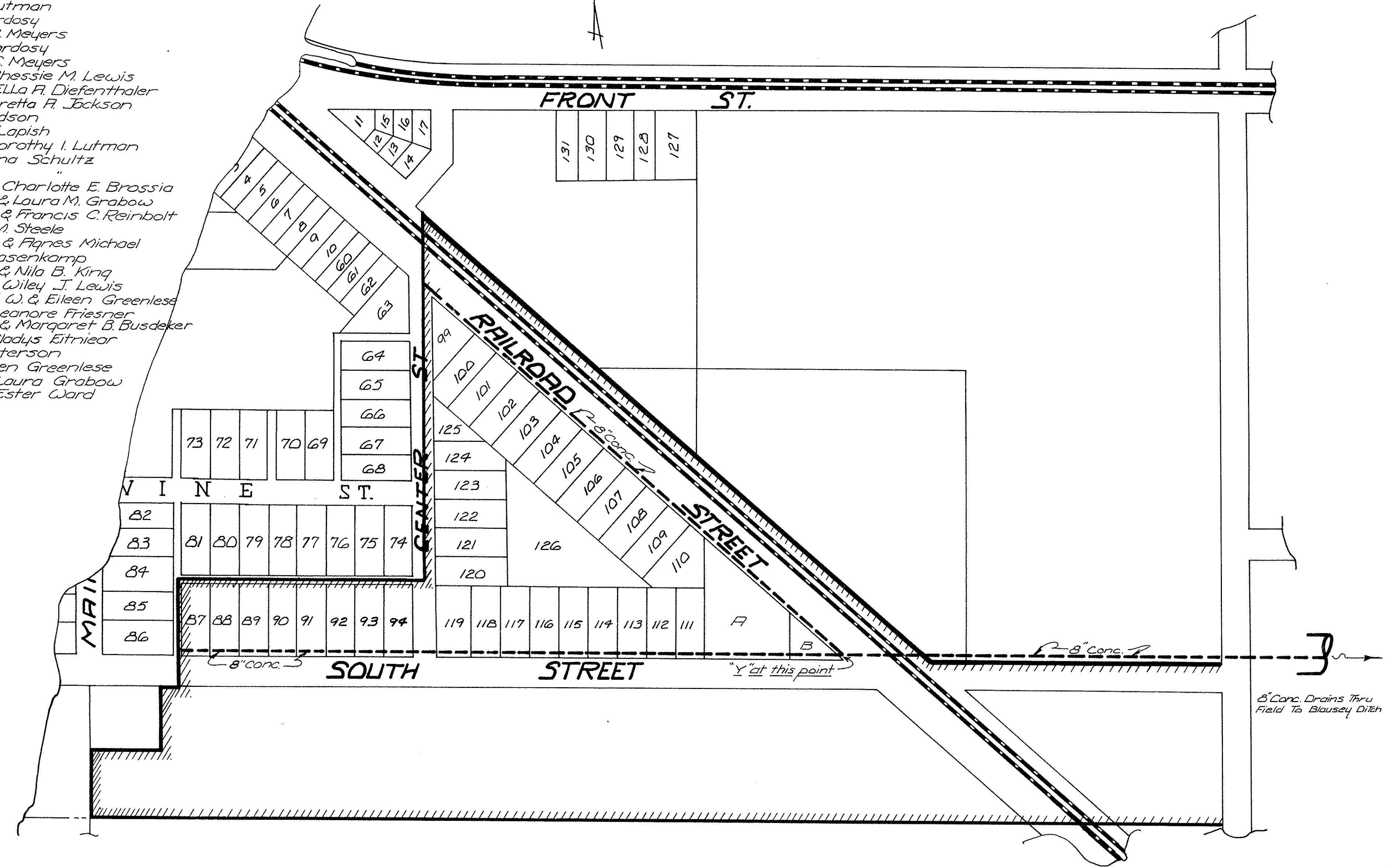
MILLBURY, OHIO PLAT SHOWS AREA DRAINING TO JOHN BLAUSEY DITCH 1961



Scale - 1" = 300'

LOT N^o ----- OWNER

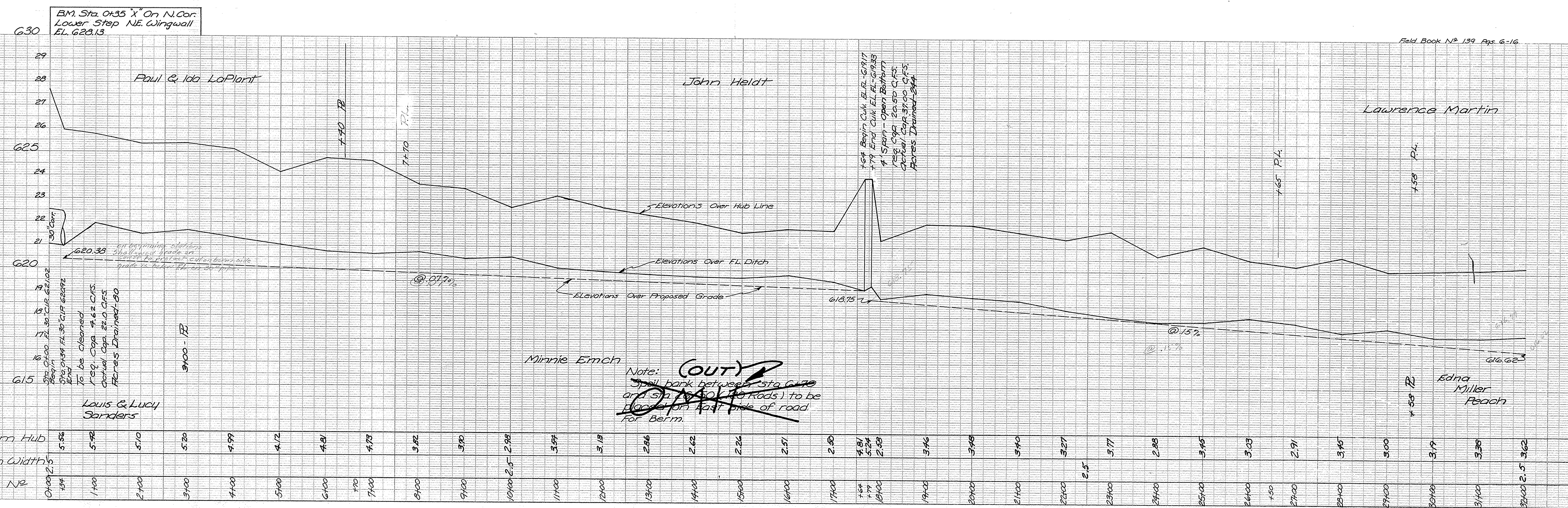
- 87 ----- James E. & Freda P. Baum
- 88-89 ----- Alma F. Buck
- 90 ----- Mrs. Lowie Lutman & Helen Ruth Konoff
- 91 ----- Ernest Lutman
- 92 ----- Estella Cardoso
- 93-N. 50' ----- Norman C. Meyers
- 93-S. 115' ----- Estella Cardoso
- 94-N. 50' ----- Norman C. Meyers
- 94-S. 115' ----- Jacob & Chessie M. Lewis
- 99-100-101 ----- Ralph F. & Ella F. Diefenthaler
- 102 ----- Carl F. & Loretta F. Jackson
- 103 ----- Ann Davidson
- 104-105 ----- Howard Lapish
- 106 ----- Earl C. & Dorothy I. Lutman
- 107 ----- W^o & Leona Schultz
- 108 ----- "
- 109-110 ----- Frank H. & Charlotte E. Brassia
- 111 ----- Howard R. & Laura M. Grabow
- 112 ----- Raymond & Francis C. Reinbolt
- 113-114 ----- Dorothy M. Steele
- 115 ----- Edward S. & Frances Michael
- 116 ----- Bertha Hasenkamp
- 117 ----- C. Edward & Nilo B. King
- 118-119 ----- Jacob H. & Wiley J. Lewis
- 120 ----- Raymond W. & Eileen Greenlese
- 121 ----- Arthur & Leonore Friesner
- 122 ----- Donald E. & Margaret B. Busdeker
- 123 ----- Lester & Gladys Eitriear
- 124-125 ----- Carl G. Peterson
- 126 ----- Ray & Helen Greenlese
- F ----- Howard & Laura Grabow
- B ----- Arthur & Ester Ward



Note:
 8" Conc. Pipe along South St. installed approx. 1953 to replace 8" Red Clay Tile.
 8" Conc. Pipe along Railroad St. & East to Ditch installed approx. 1926.

8" Conc. Drains Thru Field To Blausey Ditch

JOHN BLAISELY JOINT COUNTY DITCH



Field Book No. 139 Pgs. 6-16

BM. Sta. 0+35 X On N. Cor.
Lower Step NE. Wingwall
EL. 623.13

19
18
17
16
15
14
13
12
11
10
9
8
7
6
5
4
3
2
1
0
Begin
End
Sta. 0+00
Sta. 0+35
Sta. 0+70
Sta. 1+00
Sta. 1+35
Sta. 1+70
Sta. 2+00
Sta. 2+35
Sta. 2+70
Sta. 3+00
Sta. 3+35
Sta. 3+70
Sta. 4+00
Sta. 4+35
Sta. 4+70
Sta. 5+00
Sta. 5+35
Sta. 5+70
Sta. 6+00
Sta. 6+35
Sta. 6+70
Sta. 7+00
Sta. 7+35
Sta. 7+70
Sta. 8+00
Sta. 8+35
Sta. 8+70
Sta. 9+00
Sta. 9+35
Sta. 9+70
Sta. 10+00
Sta. 10+35
Sta. 10+70
Sta. 11+00
Sta. 11+35
Sta. 11+70
Sta. 12+00
Sta. 12+35
Sta. 12+70
Sta. 13+00
Sta. 13+35
Sta. 13+70
Sta. 14+00
Sta. 14+35
Sta. 14+70
Sta. 15+00
Sta. 15+35
Sta. 15+70
Sta. 16+00
Sta. 16+35
Sta. 16+70
Sta. 17+00
Sta. 17+35
Sta. 17+70
Sta. 18+00
Sta. 18+35
Sta. 18+70
Sta. 19+00
Sta. 19+35
Sta. 19+70
Sta. 20+00
Sta. 20+35
Sta. 20+70
Sta. 21+00
Sta. 21+35
Sta. 21+70
Sta. 22+00
Sta. 22+35
Sta. 22+70
Sta. 23+00
Sta. 23+35
Sta. 23+70
Sta. 24+00
Sta. 24+35
Sta. 24+70
Sta. 25+00
Sta. 25+35
Sta. 25+70
Sta. 26+00
Sta. 26+35
Sta. 26+70
Sta. 27+00
Sta. 27+35
Sta. 27+70
Sta. 28+00
Sta. 28+35
Sta. 28+70
Sta. 29+00
Sta. 29+35
Sta. 29+70
Sta. 30+00
Sta. 30+35
Sta. 30+70
Sta. 31+00
Sta. 31+35
Sta. 31+70
Sta. 32+00

JOHN BLAUSELY JOINT COUNTY DITCH

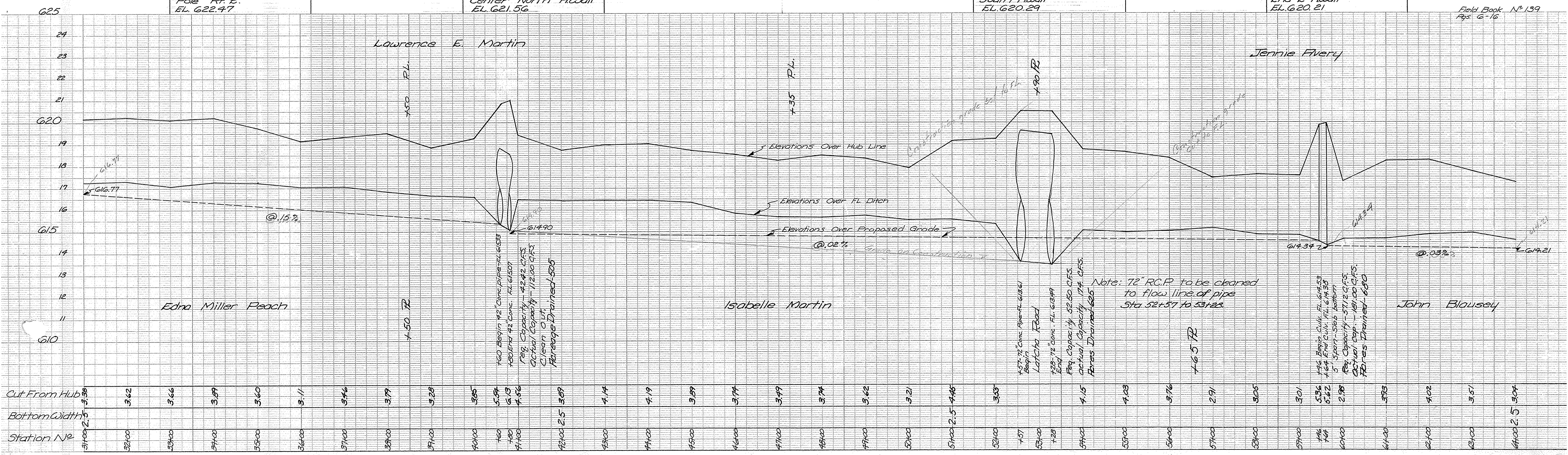
Sta. 34+80 B.M. SPK TEL. Pole Rt. 2. EL. 622.47

Sta. 40+80 B.M. "X" Top Center North Hwall. EL. 621.56

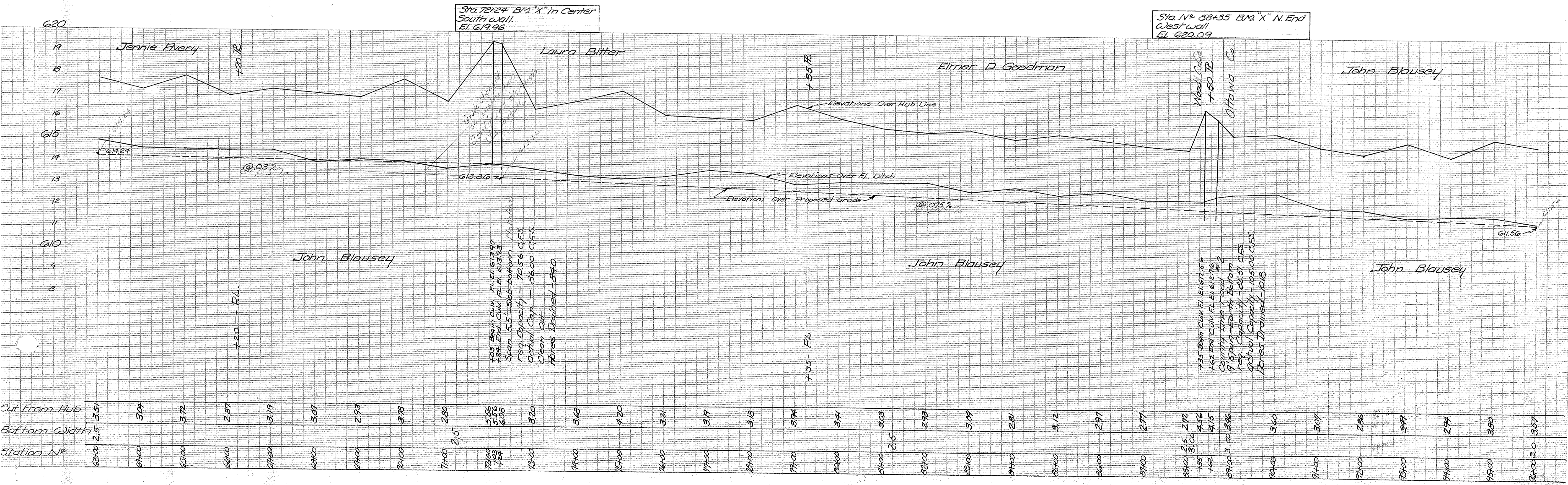
Sta. 52+57 B.M. "X" Center South Hwall. EL. 620.29

Sta. 59+69 B.M. "X" North End E Hwall. EL. 620.21

Field Book No. 139
Pgs. 6-16



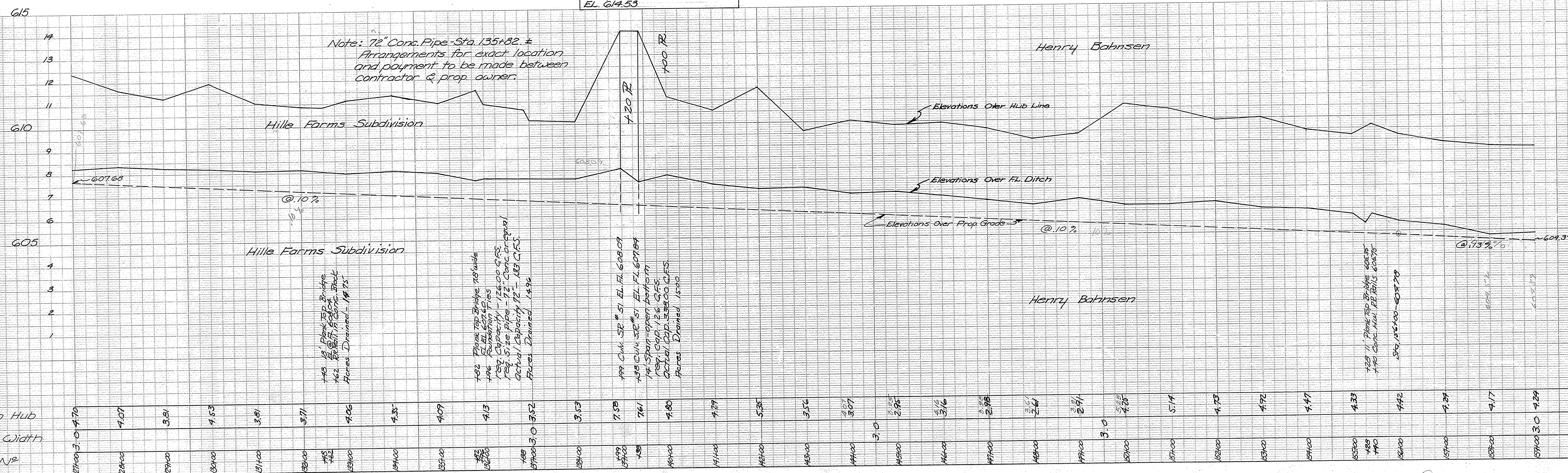
JOHN BLAUSEY JOINT COUNTY DITCH



JOHN BLAUSEY JOINT COUNTY DITCH

BM. Sta. 138+99-X on N.W.
Wing Culv. SR #51
EL. 614.53

Note: 72" Conc. Pipe - Sta. 135+82. ±
Arrangements for exact location
and payment to be made between
contractor & prop. owner.



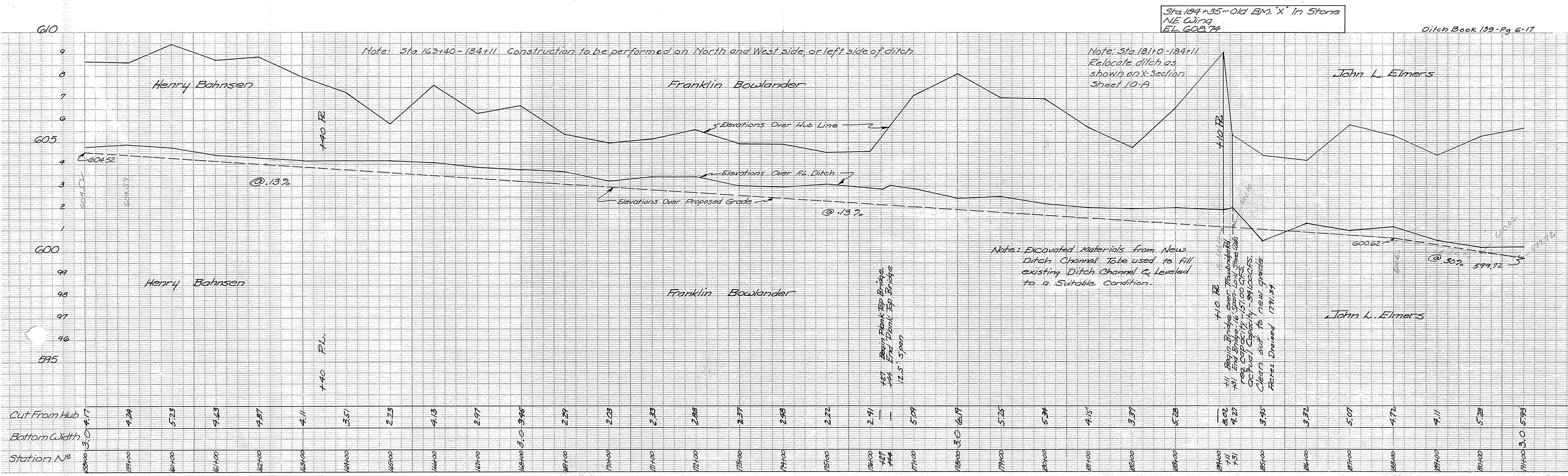
143 1/2" Plank Top Bridge
144 1/2" Plank Top Bridge
145 1/2" Plank Top Bridge
146 1/2" Plank Top Bridge
147 1/2" Plank Top Bridge
148 1/2" Plank Top Bridge
149 1/2" Plank Top Bridge
150 1/2" Plank Top Bridge
151 1/2" Plank Top Bridge
152 1/2" Plank Top Bridge
153 1/2" Plank Top Bridge
154 1/2" Plank Top Bridge
155 1/2" Plank Top Bridge
156 1/2" Plank Top Bridge
157 1/2" Plank Top Bridge
158 1/2" Plank Top Bridge
159 1/2" Plank Top Bridge

702 24" x 24" Bridge 78" wide
703 24" x 24" Bridge 78" wide
704 24" x 24" Bridge 78" wide
705 24" x 24" Bridge 78" wide
706 24" x 24" Bridge 78" wide
707 24" x 24" Bridge 78" wide
708 24" x 24" Bridge 78" wide
709 24" x 24" Bridge 78" wide
710 24" x 24" Bridge 78" wide
711 24" x 24" Bridge 78" wide
712 24" x 24" Bridge 78" wide
713 24" x 24" Bridge 78" wide
714 24" x 24" Bridge 78" wide
715 24" x 24" Bridge 78" wide
716 24" x 24" Bridge 78" wide
717 24" x 24" Bridge 78" wide
718 24" x 24" Bridge 78" wide
719 24" x 24" Bridge 78" wide
720 24" x 24" Bridge 78" wide

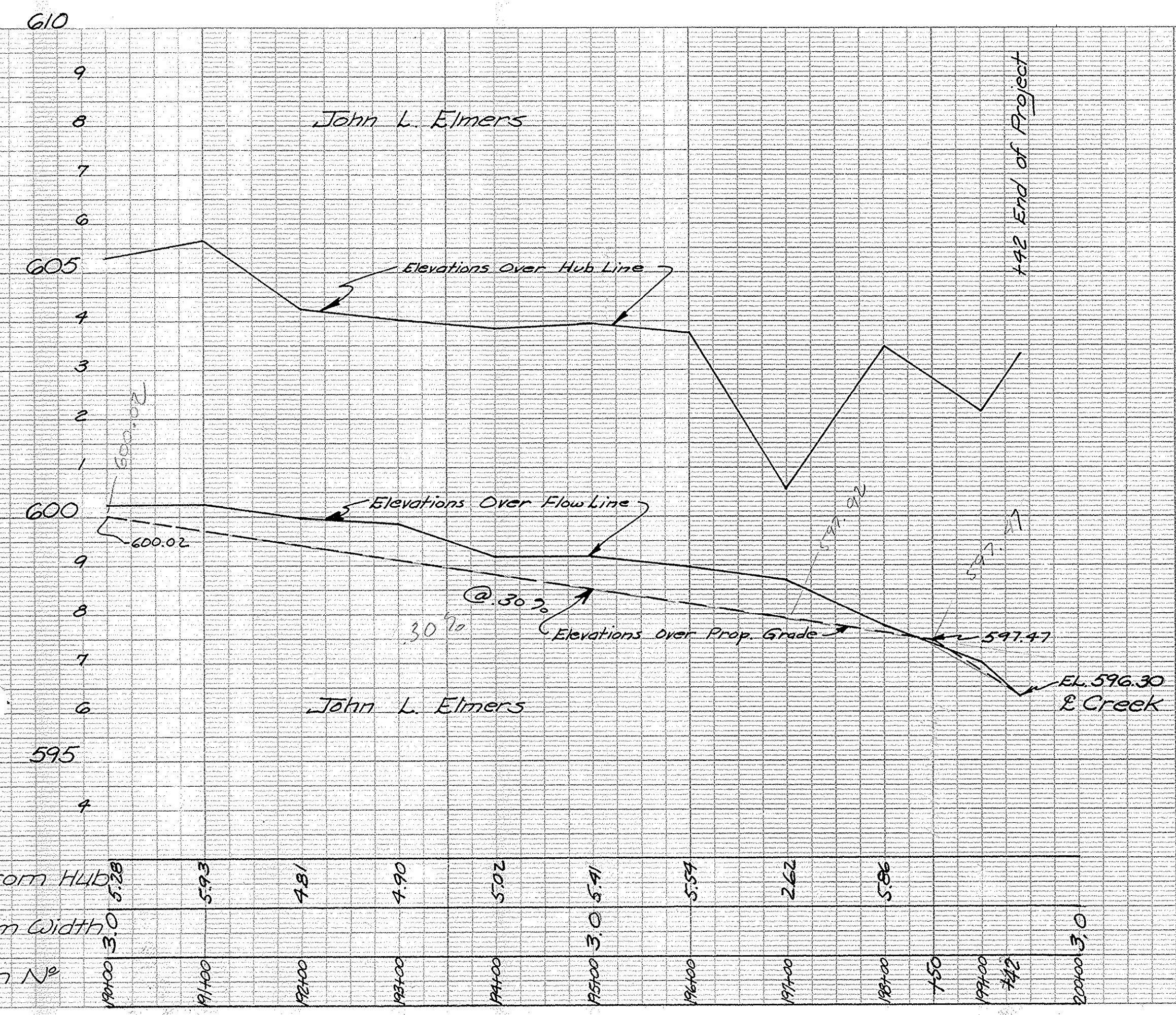
199 Culv. SR # 51 EL. FL 608.07
138 Culv. SR # 51 EL. FL 607.84
14 Start - open bottom
159 1500' 12" G.F.S.
Actual Cap. 33500 G.F.S.
Faces Drained 1500

128 11" Plank Top Bridge 60x30
129 11" Plank Top Bridge 60x30
130 11" Plank Top Bridge 60x30
131 11" Plank Top Bridge 60x30
132 11" Plank Top Bridge 60x30
133 11" Plank Top Bridge 60x30
134 11" Plank Top Bridge 60x30
135 11" Plank Top Bridge 60x30
136 11" Plank Top Bridge 60x30
137 11" Plank Top Bridge 60x30
138 11" Plank Top Bridge 60x30
139 11" Plank Top Bridge 60x30
140 11" Plank Top Bridge 60x30
141 11" Plank Top Bridge 60x30
142 11" Plank Top Bridge 60x30
143 11" Plank Top Bridge 60x30
144 11" Plank Top Bridge 60x30
145 11" Plank Top Bridge 60x30
146 11" Plank Top Bridge 60x30
147 11" Plank Top Bridge 60x30
148 11" Plank Top Bridge 60x30
149 11" Plank Top Bridge 60x30
150 11" Plank Top Bridge 60x30
151 11" Plank Top Bridge 60x30
152 11" Plank Top Bridge 60x30
153 11" Plank Top Bridge 60x30
154 11" Plank Top Bridge 60x30
155 11" Plank Top Bridge 60x30
156 11" Plank Top Bridge 60x30
157 11" Plank Top Bridge 60x30
158 11" Plank Top Bridge 60x30
159 11" Plank Top Bridge 60x30

JOHN BLAISEY JOINT COUNTY DITCH



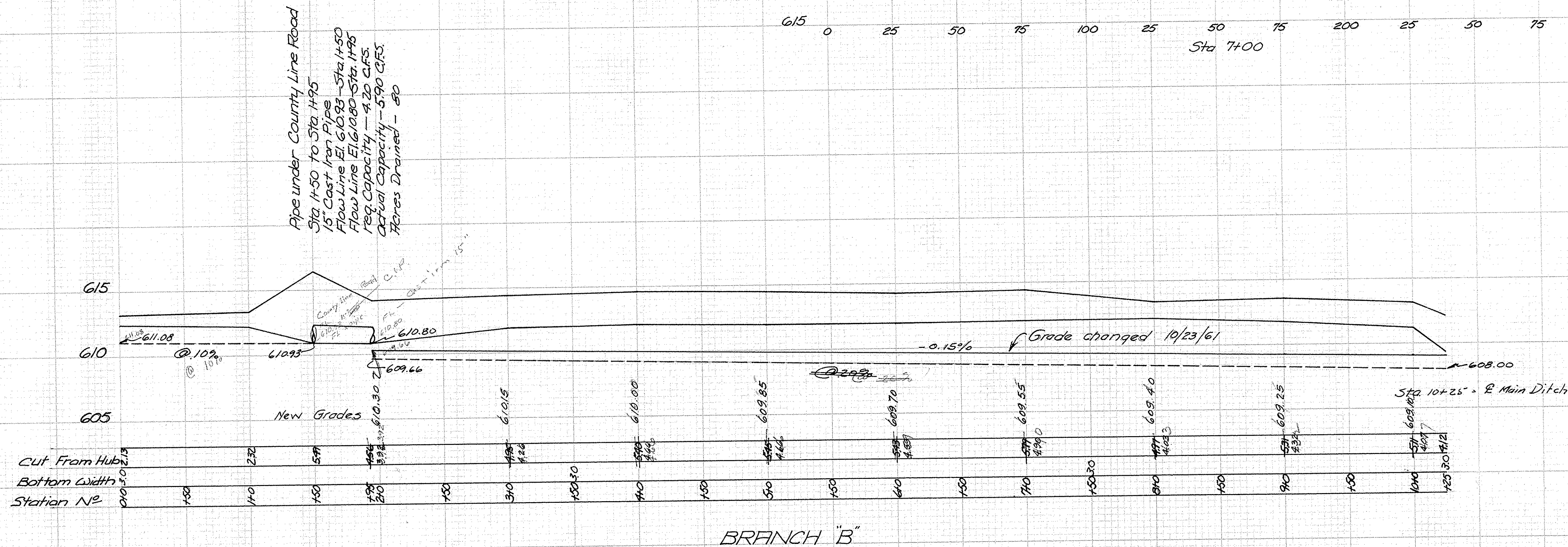
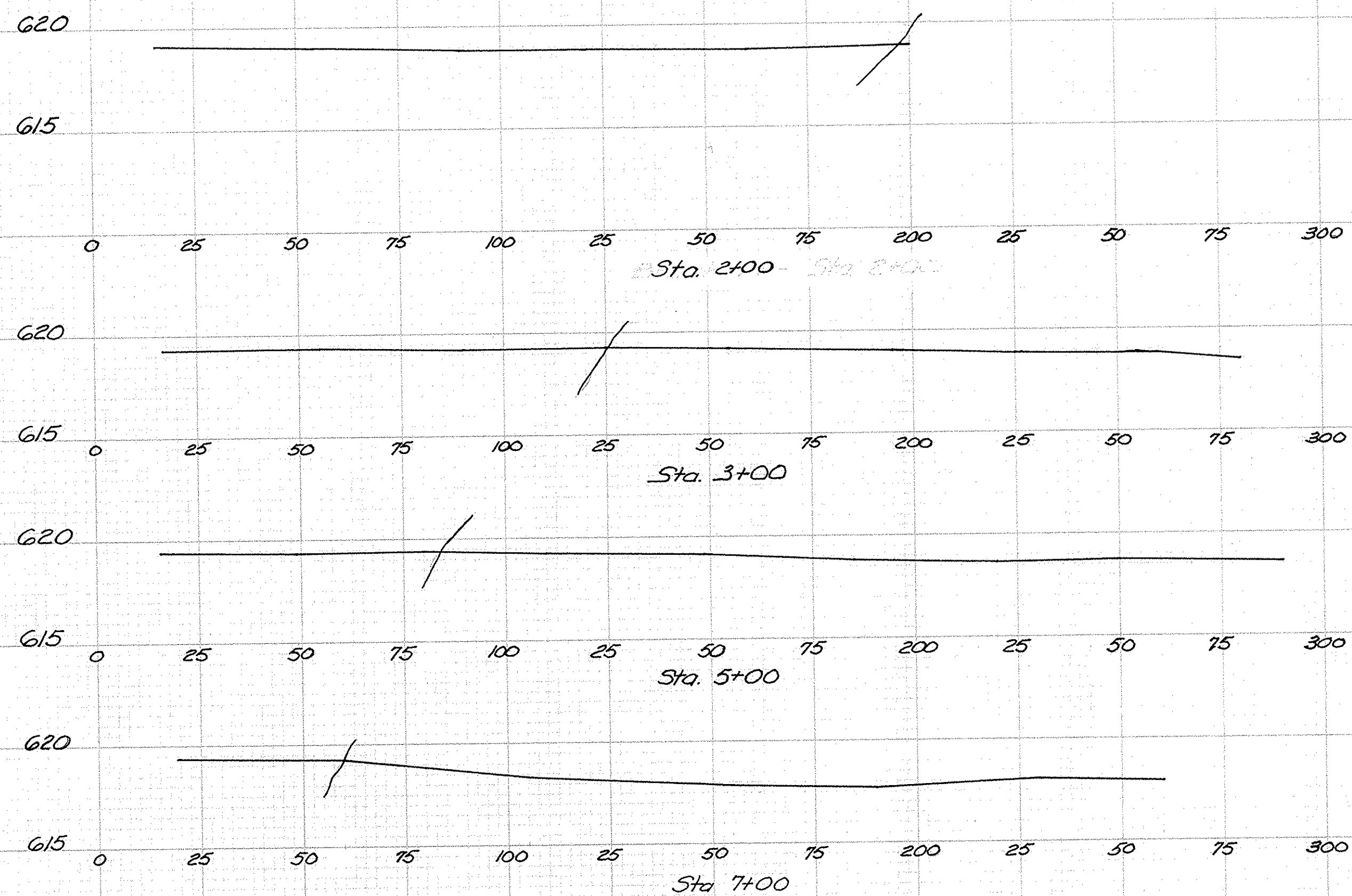
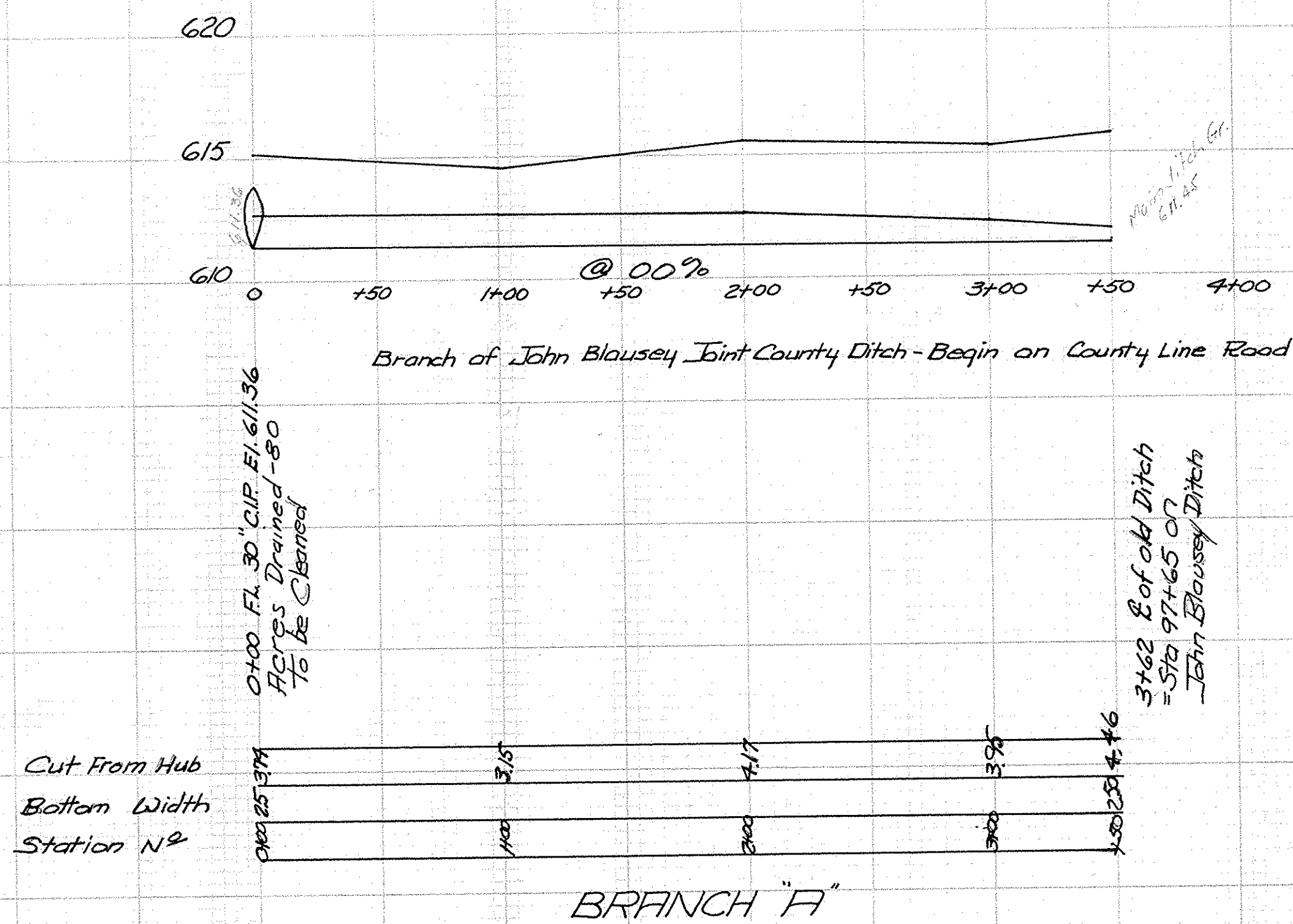
JOHN BLAUSEY JOINT COUNTY DITCH



John Blausey Joint County Ditch - 1960

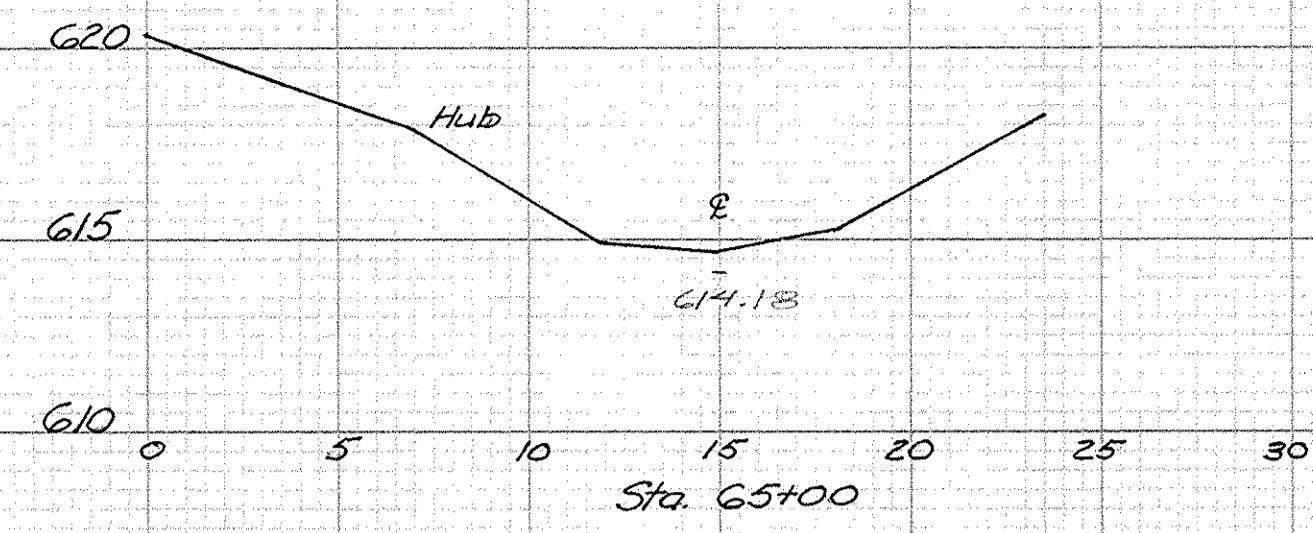
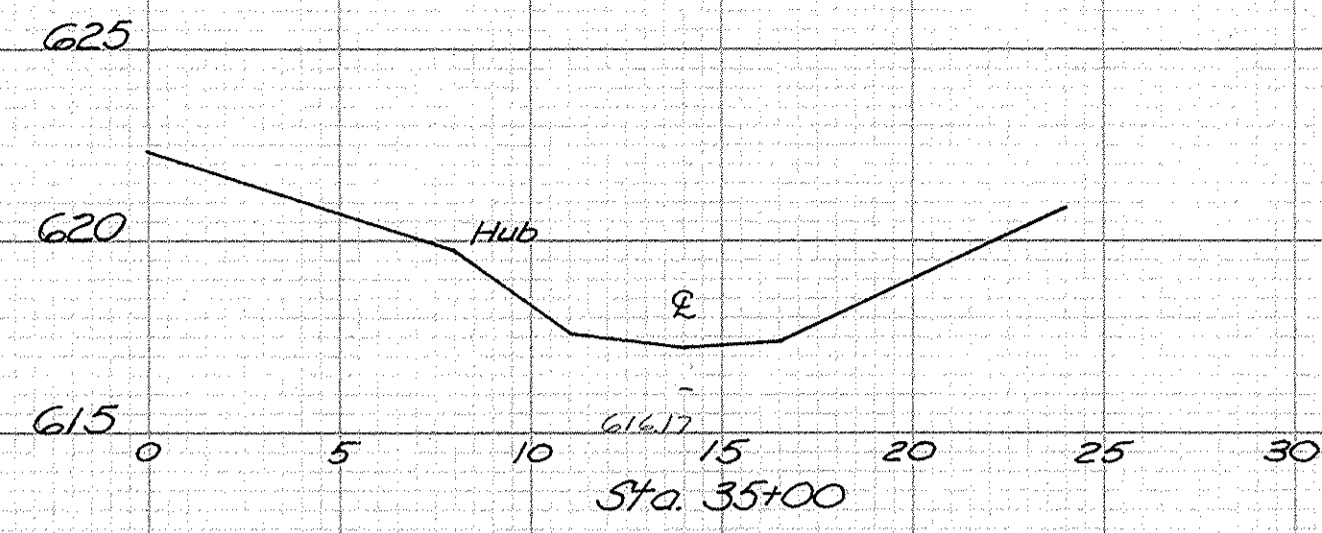
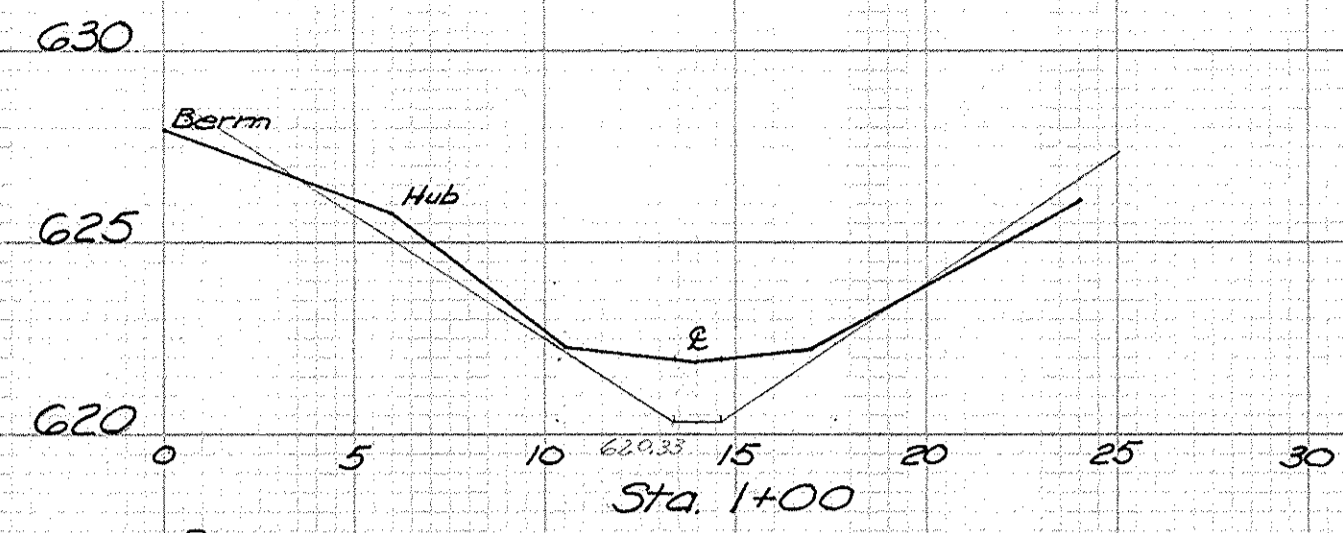
9/10

9/10



X-sections Along John Blousey Joint County Ditch 1960-1960

8
12
10



10
10

