

JACOB YOUNKER DITCH ALLEN TWP.

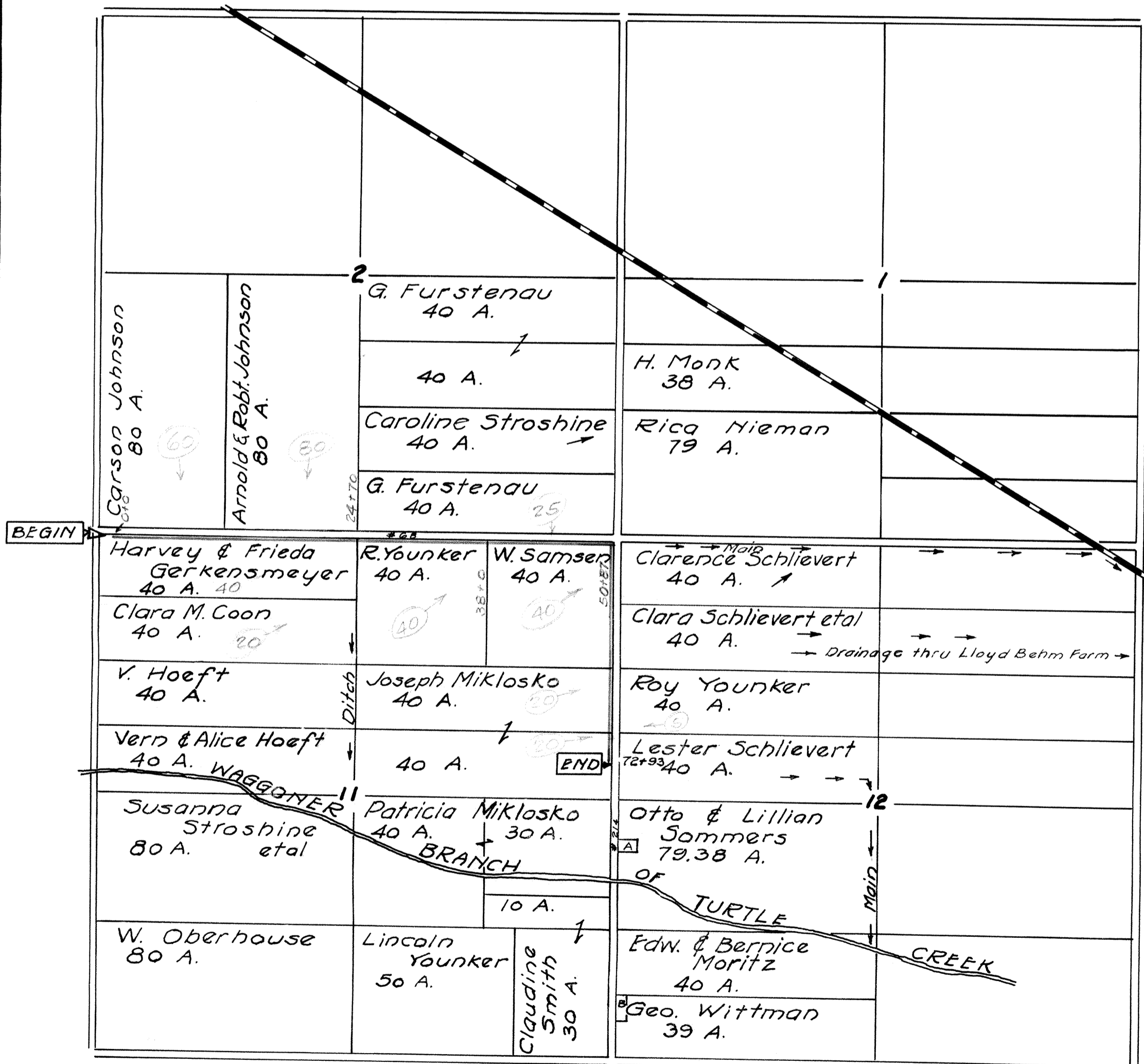
Scale: 1" = 1000'

1960

Ditch Recordings:

5/9/2013 SF-13-007 DITCH FROM G3+36E TO 36" CORNER E 72+93

12/12/2014 SF-14-011 DITCH FROM 38+00E TO G3+36E



Small Parcel - Sec. 12
 A - Doyle F. & Marilyn Sommer 0.618 A.
 B - Lewis H. & Ruth Elwing 1 A.

JACOB YOUNKER DITCH

ALLEN TWP.

SEC. 2-11-12

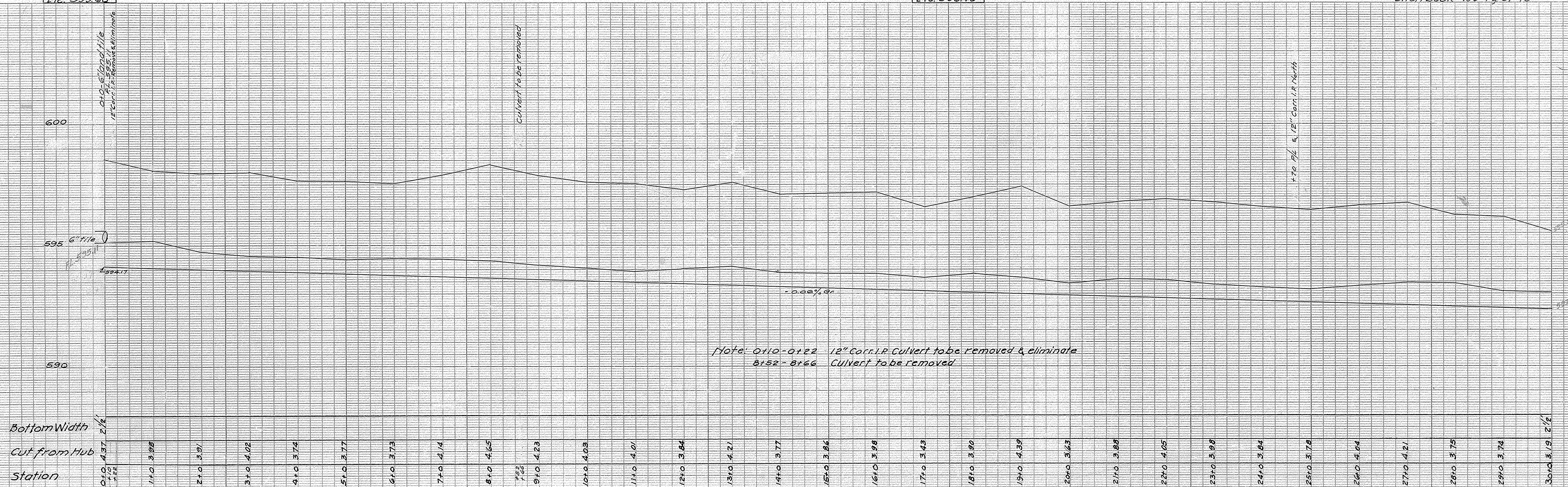
1960

Scale: Vertical 1"=2'
Horizontal 1"=100'

B.M. - 0+40
Spk. BP in Yard
Elev. 599.68

B.M. - 17+60
R.R. Spk. BP L &
Elev. 598.40

Ditch Book 138 - Pg. 67-70



Note: 0+10-0+22 12" Cor. I.P. Culvert to be removed & eliminate
8+52-8+66 Culvert to be removed

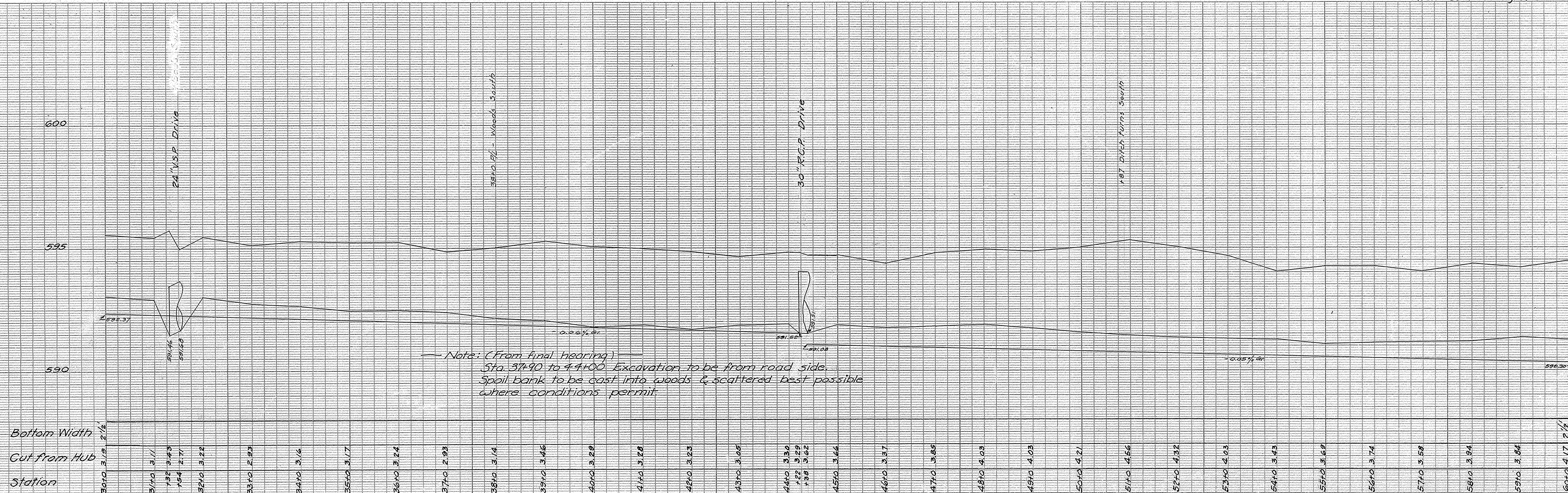
JACOB YOUNKER DITCH

ALLEN TWP.

SEC. 2-11-12

1960

Ditch Book 138 - Pg. 67-70



Note: (From final hearing)
 Sta. 37+90 to 44+00 Excavation to be from road side.
 Spoil bank to be cast into woods & scattered best possible
 where conditions permit.

JACOB YOUNKER DITCH

ALLEN TWP.

SEC. 2-11-12

1960

B.M. Sta. 70+0
R.R. Spk. Tol. Po.
Elev. 596.27

Ditch Book 138-Pg. 67-70

