

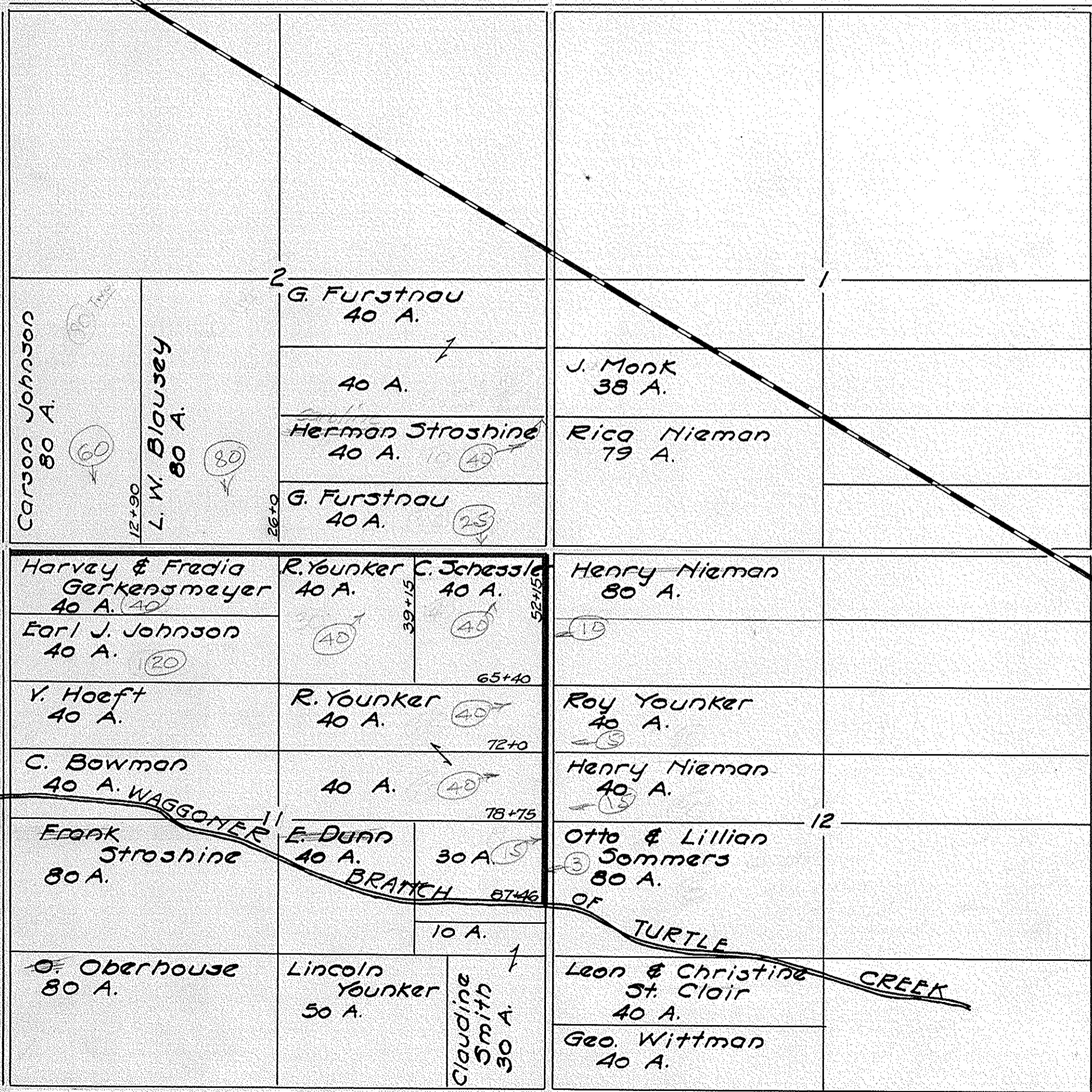
# JACOB YOUNKER DITCH

ALLEN

TWP.

Scale: 1" = 1000'

August, 1942

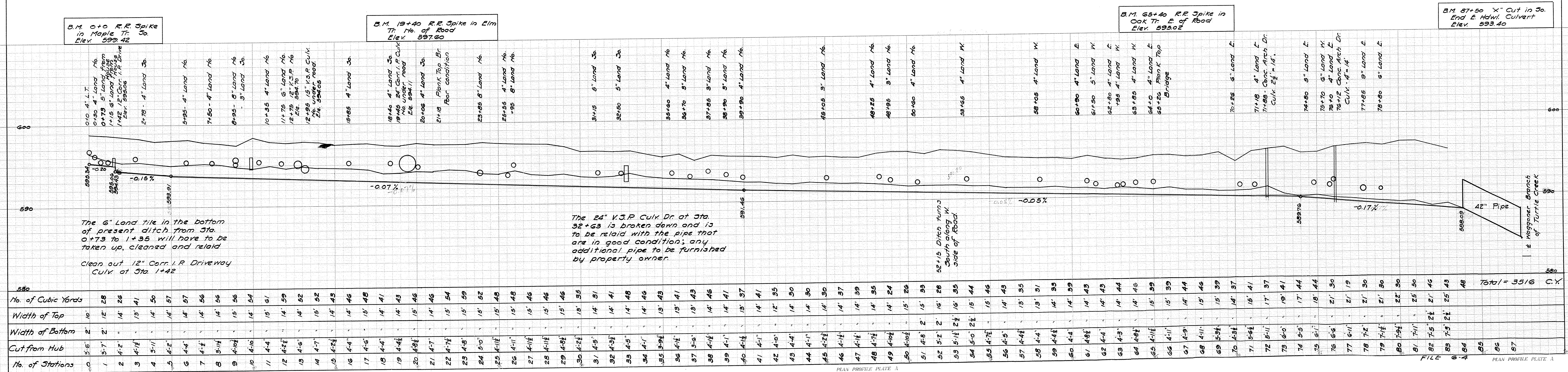


95.30  
90.80  
4.50

# THE JACOB YOUNKER DITCH

## OTTAWA COUNTY ALLEN TOWNSHIP

Scale: Vertical 1"=4'  
Horizontal 1"=200' August 1942



B.M. 0+0 R.R. Spike in Maple Tr. 50. Elev. 593.42

B.M. 19+40 R.R. Spike in Elm Tr. No. of Road Elev. 597.00

B.M. 65+40 R.R. Spike in Oak Tr. E. of Road Elev. 593.02

B.M. 87+50 "X" Cut in So. End E. Hdwl. Culvert Elev. 593.40

0+10 4" L.T.  
0+30 4" Land No.  
0+73 5" Land from  
1+15 6" Land 1925  
1+42 12" Corr. I.P. Drive  
Elev. 595.06

2+78 4" Land 3a.  
5+95 4" Land No.  
7+50 4" Land No.  
9+95 6" Land No.  
10+35 4" Land No.  
11+75 6" Land No.  
12+75 12" V.I.P. No.  
Elev. 584.70  
12+95 12" V.I.P. Culv.  
No. under road.  
Elev. 584.06

15+85 4" Land 3a.  
18+40 4" Land 3a.  
19+45 24" Corr. I.P. Culv.  
No. under road  
Elev. 584.11  
20+06 4" Land 3a.  
21+18 Plank Top Br.  
Poor condition

23+05 8" Land No.  
25+56 4" Land No.  
26+95 8" Land No.  
31+15 6" Land 3a.  
32+50 5" Land 3a.  
34+00 4" Land No.  
36+70 5" Land No.  
37+05 3" Land No.  
38+90 5" Land No.  
39+90 4" Land No.

45+05 3" Land No.  
48+25 4" Land No.  
48+95 3" Land No.  
50+60 4" Land No.  
53+65 4" Land No.  
58+05 4" Land No.  
60+80 4" Land E.  
61+90 5" Land No.  
62+80 4" Land E.  
63+80 4" Land No.  
65+85 4" Land No.  
66+40 4" Land E.  
68+26 Plank Top  
Bridge

70+26 6" Land E.  
71+18 4" Land E.  
71+80 Conc. Arch Dr.  
Culv. 24" x 14".  
74+80 5" Land E.  
75+70 3" Land No.  
76+10 4" Land E.  
76+12 Conc. Arch Dr.  
Culv. 4" x 14".  
77+85 9" Land E.  
78+80 6" Land E.

The 6" Land tile in the bottom of present ditch from 31a. 0+73 to 1+35 will have to be taken up, cleaned and relaid.  
Clean out 12" Corr. I.P. Driveway Culv. at 31a. 1+42

The 24" V.I.P. Culv. Dr. at 31a. 32+63 is broken down and is to be relaid with the pipe that are in good condition; any additional pipe to be furnished by property owner.

52+15 Ditch Turns South along W. side of Road.

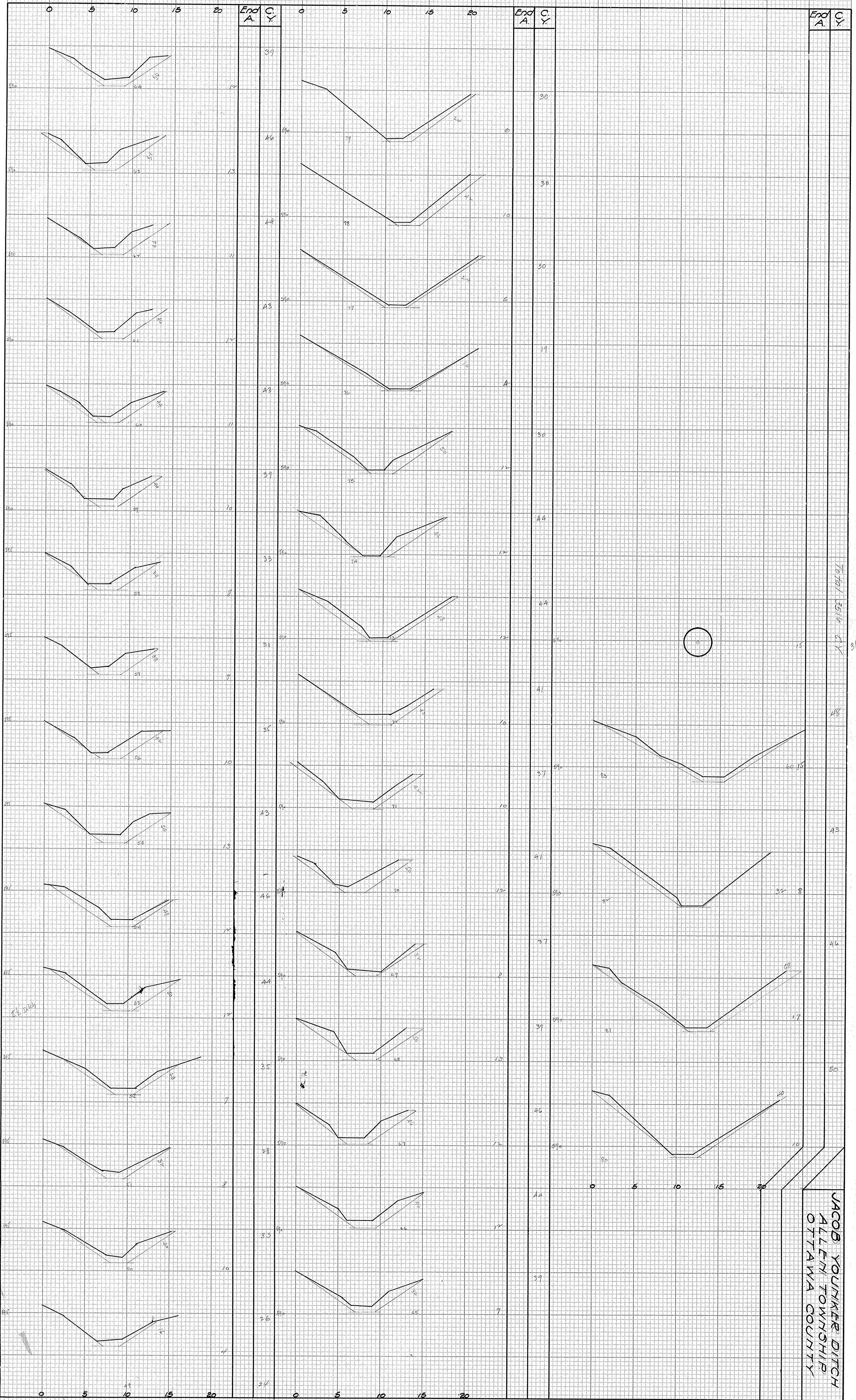
42" Pipe  
Meggoner Branch of Turtle Creek

No. of Stations	Cut from Hub	Width of Bottom	Width of Top	No. of Cubic Yards
0	3'-6"	2'	16'	0
1	3'-7"	2'	12'	28
2	4'-2"	2'	14'	26
3	4'-1 1/2"	2'	13'	41
4	5'-11"	2'	14'	50
5	4'-2"	2'	14'	57
6	4'-4"	2'	14'	57
7	4'-1 1/2"	2'	14'	56
8	3'-11 1/2"	2'	14'	56
9	4'-10 1/2"	2'	15'	56
10	4'-10"	2'	14'	54
11	4'-4"	2'	15'	61
12	4'-2 1/2"	2'	14'	59
13	4'-6"	2'	14'	52
14	4'-7"	2'	15'	52
15	4'-2 1/2"	2'	14'	43
16	4'-4"	2'	14'	46
17	4'-6"	2'	15'	48
18	4'-4"	2'	14'	41
19	4'-4 1/2"	2'	14'	43
20	4'-8 1/2"	2'	15'	46
21	4'-7"	2'	14'	46
22	4'-7 1/2"	2'	15'	54
23	4'-8"	2'	15'	59
24	5'-0"	2'	15'	52
25	4'-1 1/2"	2'	15'	48
26	4'-1"	2'	15'	48
27	4'-1 1/2"	2'	15'	46
28	4'-1 1/2"	2'	15'	46
29	4'-8 1/2"	2'	15'	46
30	4'-2 1/2"	2'	18'	35
31	4'-5"	2'	14'	31
32	4'-3 1/2"	2'	14'	41
33	4'-5"	2'	14'	48
34	4'-1"	2'	14'	46
35	3'-9 1/2"	2'	13'	43
36	4'-1 1/2"	2'	13'	41
37	3'-6"	2'	13'	43
38	4'-1 1/2"	2'	14'	46
39	4'-1"	2'	14'	41
40	4'-1 1/2"	2'	13'	37
41	4'-1"	2'	14'	41
42	4'-0"	2'	12'	35
43	4'-4"	2'	14'	30
44	4'-1"	2'	14'	30
45	4'-2 1/2"	2'	14'	30
46	4'-1 1/2"	2'	14'	37
47	4'-1 1/2"	2'	14'	39
48	4'-7 1/2"	2'	14'	35
49	4'-10 1/2"	2'	14'	24
50	4'-10 1/2"	2'	15'	26
51	4'-8"	2'	15'	33
52	5'-2"	2'	16'	28
53	5'-1 1/2"	2 1/2"	16'	35
54	5'-0"	2 1/2"	15'	44
55	4'-7 1/2"	2'	15'	46
56	4'-5"	2'	14'	43
57	4'-4 1/2"	2'	13'	35
58	4'-4"	2'	13'	31
59	4'-4 1/2"	2'	14'	33
60	4'-4"	2'	14'	39
61	4'-8 1/2"	2'	14'	43
62	4'-4"	2'	14'	43
63	4'-3"	2'	14'	44
64	4'-4 1/2"	2'	14'	46
65	4'-1 1/2"	2'	15'	39
66	4'-11"	2'	15'	39
67	4'-9"	2'	14'	44
68	4'-11"	2'	15'	46
69	5'-3 1/2"	2'	15'	39
70	4'-8 1/2"	2'	14'	37
71	5'-6 1/2"	2'	15'	41
72	5'-11"	2'	17'	37
73	6'-0"	2'	19'	41
74	5'-5"	2'	17'	44
75	6'-1"	2'	18'	44
76	6'-6"	2'	21'	30
77	6'-11"	2'	21'	19
78	7'-2"	2'	21'	30
79	7'-4 1/2"	2'	21'	30
80	7'-9 1/2"	2'	22'	30
81	7'-11"	2'	25'	30
82	7'-5"	2 1/2"	21'	46
83	7'-9"	2 1/2"	25'	43
84				48
85				
86				
87				
				Total = 3516

Elev.	0 5 10 15				End A.	C. Y.	0 5 10 15				End A.	C. Y.	0 5 10 15				End A.	C. Y.
	Profile 1						Profile 2						Profile 3					
600					40	10					41	10					9	35
595					43	13					45	7					10	39
590					52	15					48	12					11	37
585					52	13					46	15					9	30
580					59	17					46	12					7	30
575					61	14					46	13					9	30
570					54	15					48	15					7	35
565					56	15					48	13					12	41
560					56	15					52	15					10	37
555					56	15					57	17					10	41
550					57	16					57	17					12	46
545					57	15					46	13					10	43
540					50	12					46	12					12	41
535					41	10					43	11					11	43
530					40	10					43	11					14	46
525					48	12					48	15					12	48

JACOB YOUNKER DITCH  
ALLEY TOWNSHIP  
OTTAWA COUNTY

2/14/6



JACOB YOUNKER DITCH  
 ALLEN TOWNSHIP  
 OTTAWA COUNTY

70/101/35116 C.Y.

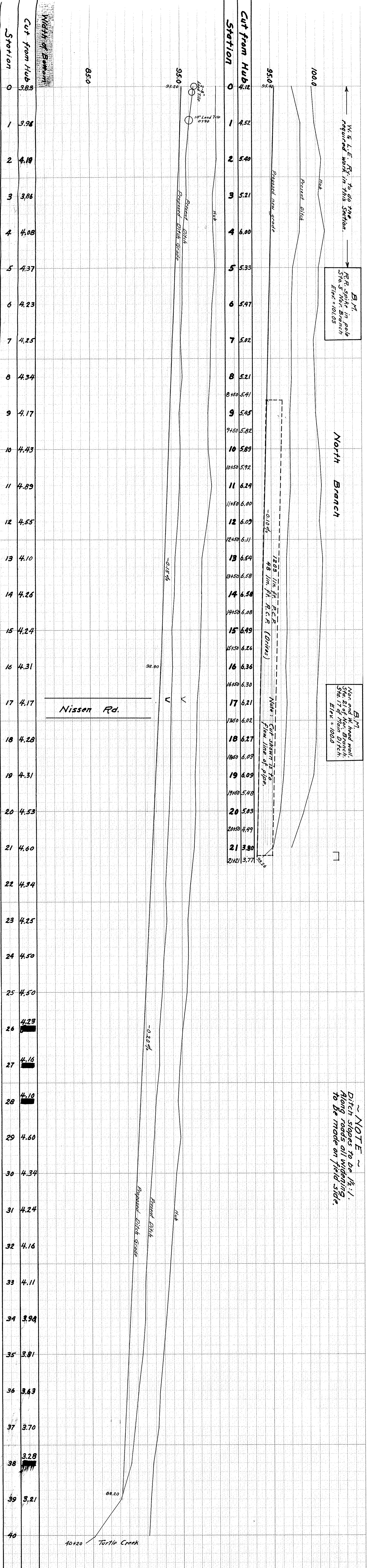
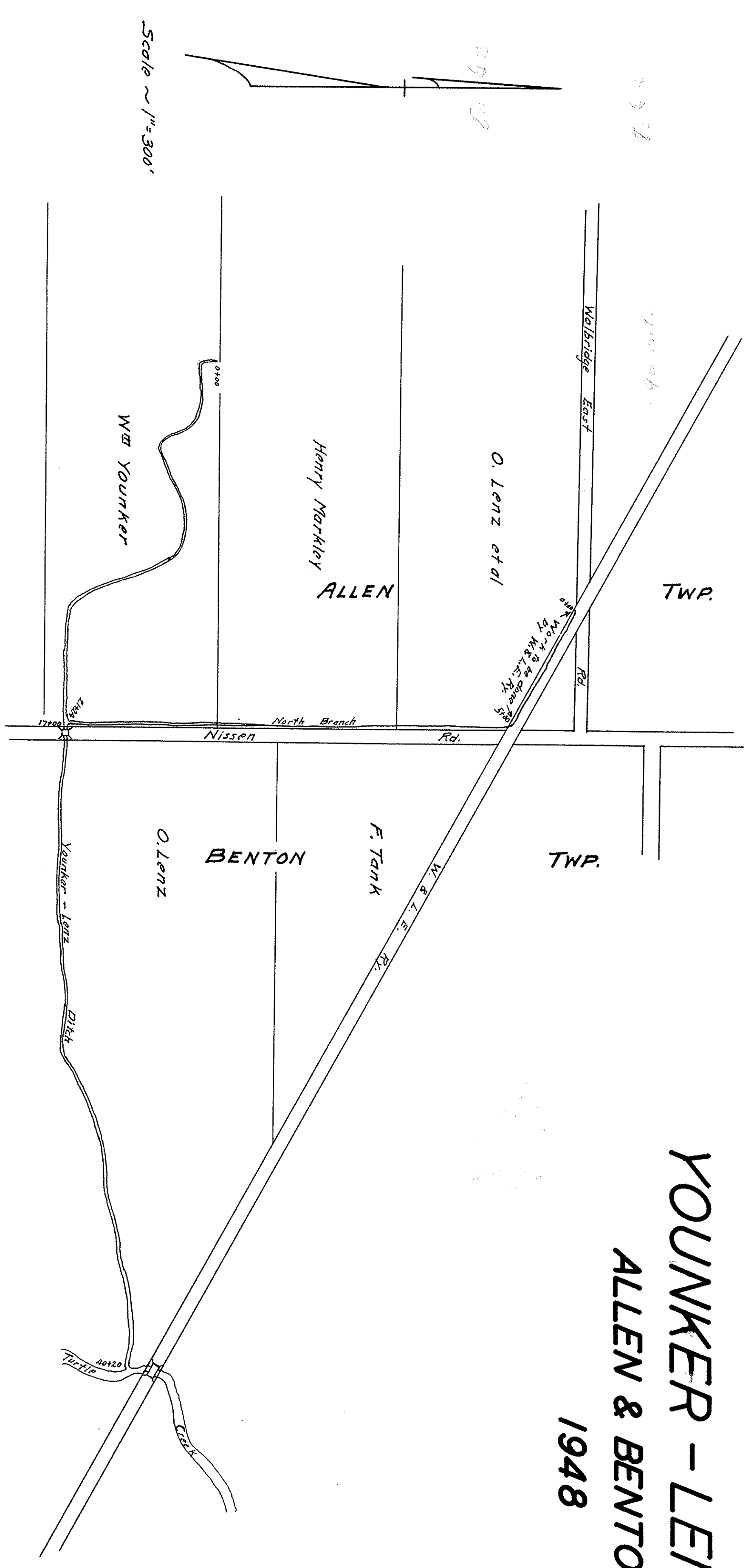
3551

1870  
 1.81  
 25.77

# YOUNKER - LENZ DITCH

## ALLEN & BENTON TWP.

### 1948



W. S. L. E. Ry. to do the required work in this station.

BM spike in pole Sta. 5167-101.00 Elev. 101.00

BM Non and H. head wall, Sta. 21 of Main Ditch. Elev. = 100.00

NOTE ~ Ditch slopes to be 1/2:1. Along roads all widening to be made on field side.

12.00 1 1/2 in. dia. P.C.P. 48 in. H. R.C.P. (Ditches) Note: Cut shown is to flow line of pipe.

KEUPPEL & ESSER CO. NEW YORK  
 ENGINEERS AND ARCHITECTS  
 250 WEST 42ND STREET, NEW YORK 36, N.Y.  
 DRAWING NO. 100-101-00

File 5-3